



Nikon D90 Replacing the SB / IF card

Replacing the board holding the GPS, DC in and AV out connectors. Replacement of the electronic card including the GPS connector, DC IN, and AV out.

Written By: JOLY



INTRODUCTION

Replacing the board holding the GPS, DC in and AV out connectors.

Replacement of the electronic card including the GPS connector, DC IN, and AV out.

TOOLS:

- [Phillips #000 Screwdriver](#) (1)
-

Step 1 — Remove the bottom cover



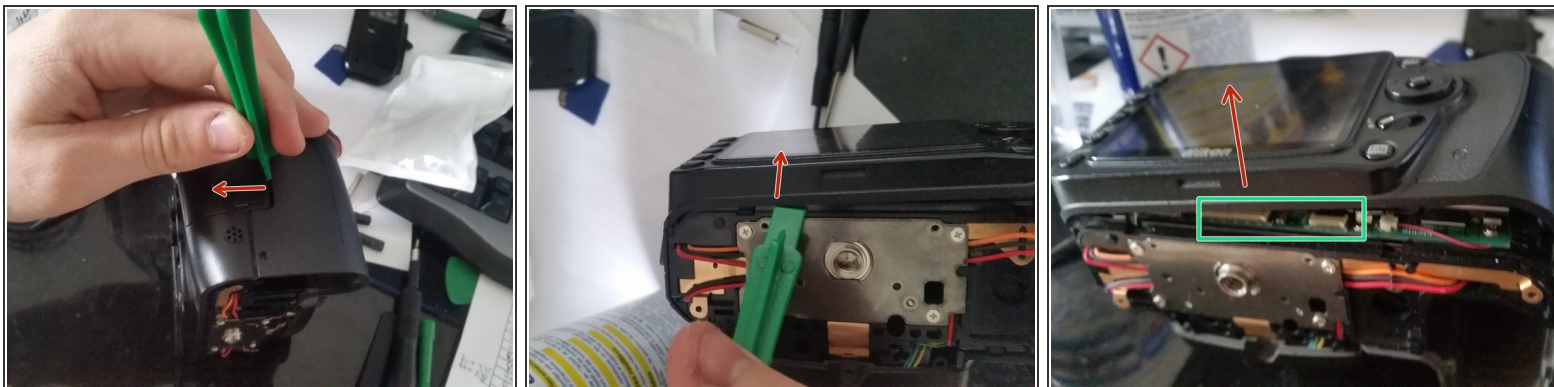
- Remove the three screw in red
- Remove the three long screw in orange
- Remove the screw in yellow
- ⓘ Use a little of WD40 if the screw is blocked

Step 2 — Remove the back cover



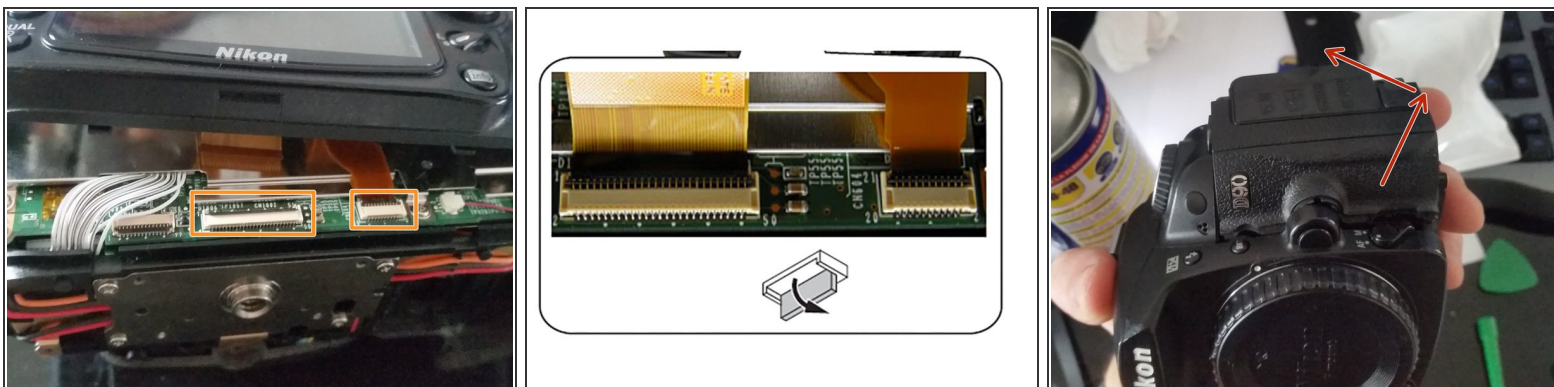
- Remove the 4 screw in green
- Remove the 2 screw in yellow

Step 3



- Slacken the grip side of the cover first
- Remove the cover wholly.
- ⚠ Be carefull with the two flex cables

Step 4



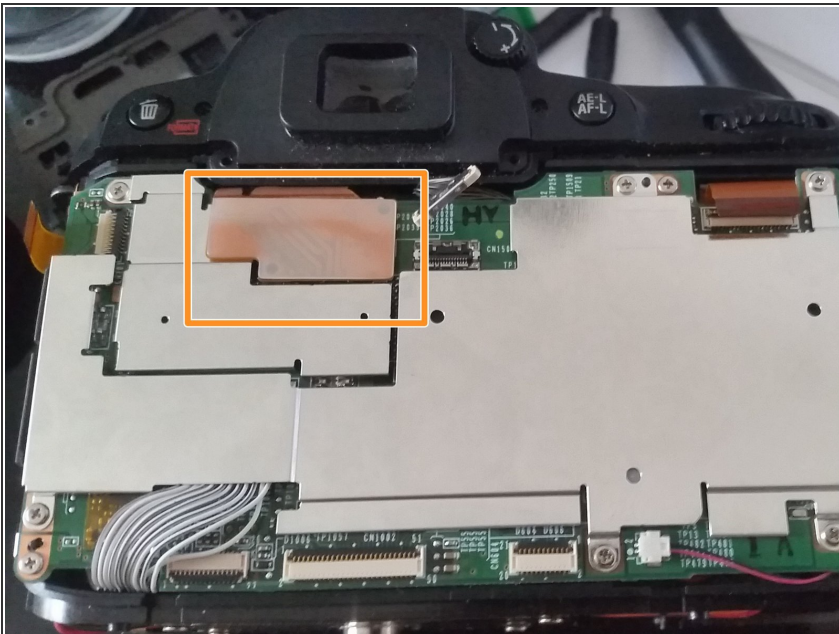
- Disconnect the FPC of the back cover
- ⓘ Toggle up the black plate to free the flex cable
- Remove the grip cover by rotating

Step 5 — Disconnect all the cables - part 1/3



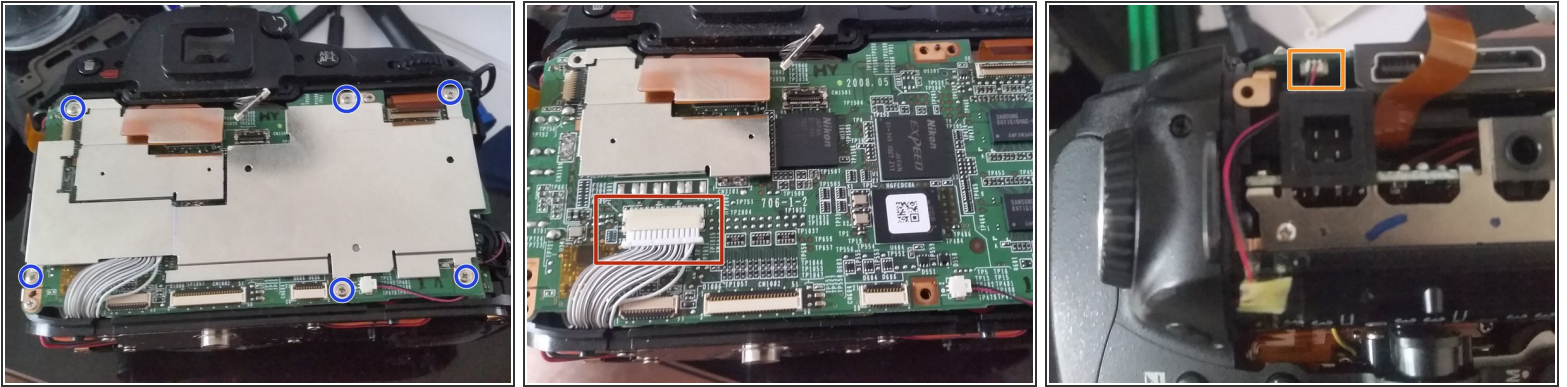
- Toggle up the black plate and disconnect the flex cable
- Toggle up the white plate and disconnect the flex cable
- Push up the right side of the connector to free it

Step 6 — Disconnect all the cables - part 2/3



- Push up the bottom of the connector to free it

Step 7 — Detach the protection plate



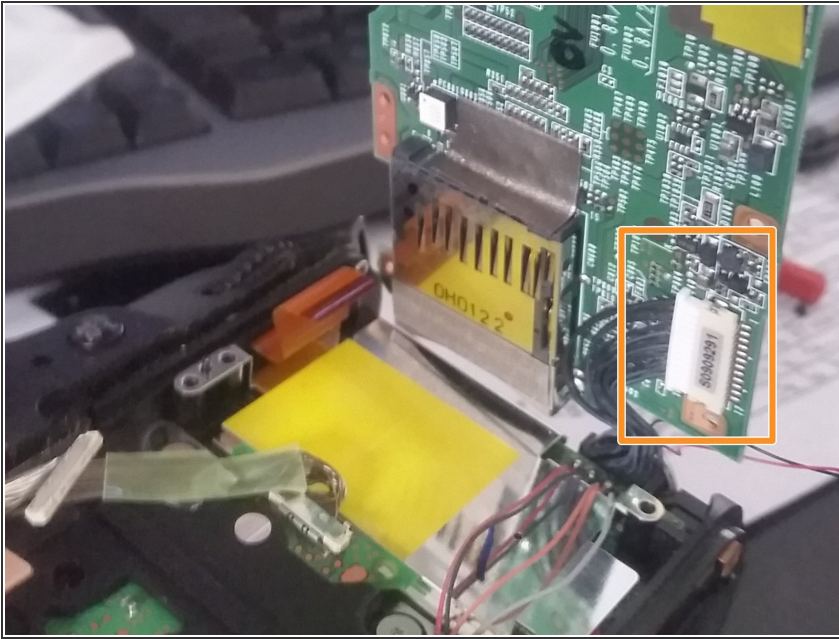
- Remove the six screws to free the protection plate
- Disconnect the white cables
- Disconnect the microphone Cable

Step 8 — Disconnect all cables - Part 3/3



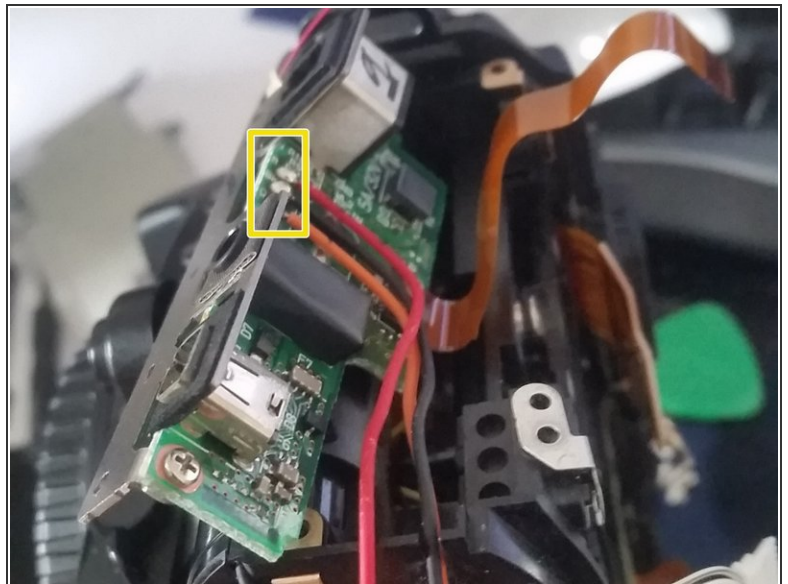
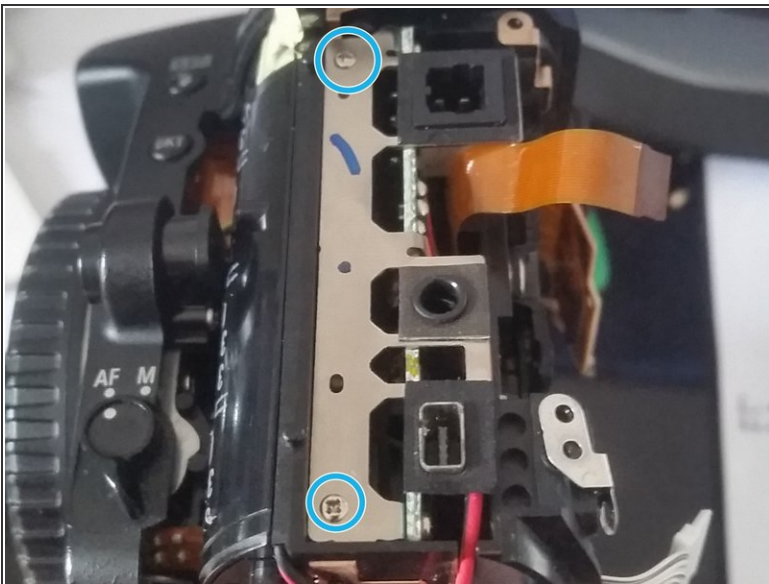
- Disconnect the speaker cable
- Remove the two screws to free the PCB
- Toggle th PCB from Left to Right

Step 9 — Disconnect the cable on the bottom of the PCB



- Disconnect the black cables

Step 10 — Free the IF/SB PCB



- Remove the two screws
- ⓘ Push the IF/SB PCB
- Unsolder the 3 Wires (Red, Black, Orange)

To reassemble your device, follow the instructions in reverse order.