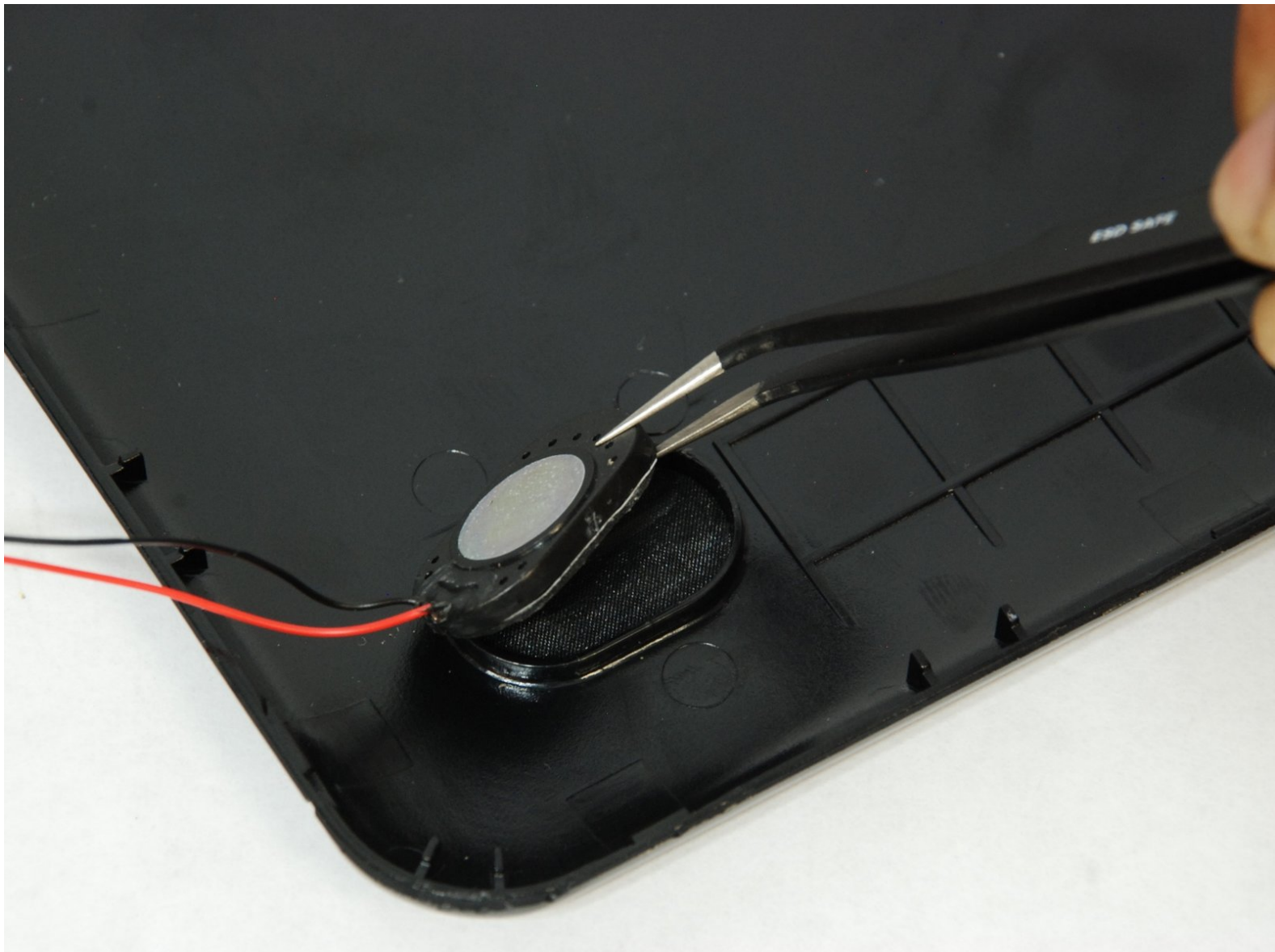




Visual Land Prestige Elite 9Q Speaker Replacement

This guide will aid you in replacing your the speaker in the Visual Land Prestige Elite 9Q.

Written By: Joseph Justice



INTRODUCTION

Before starting this guide its important to note that the speaker replacement requires soldering. Don't know how to solder? Don't worry! You can learn how right [here](#).

TOOLS:

- [iFixit Opening Tools](#) (1)
 - [Tweezers](#) (1)
 - [Soldering Iron](#) (1)
 - [Spudger](#) (1)
-

Step 1 — Speaker



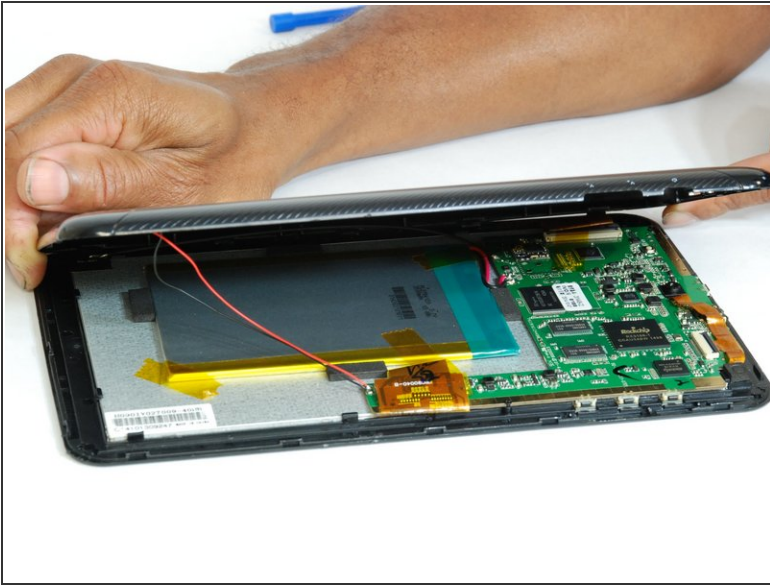
- Using the large plastic opening tool, start along a side of the device and apply light pressure in the seam between the top and bottom outer covers.
 - Maneuver the smaller plastic opening tool at the spot of the large opening tool and slowly slide along the edge.
- i** You should feel each plastic connections begin to loosen.*

Step 2



- Move tool around each connection, and continue around the device until all connections have been loosened.
- ⚠ The user risks damaging the connections if tool is slid too fast.**

Step 3



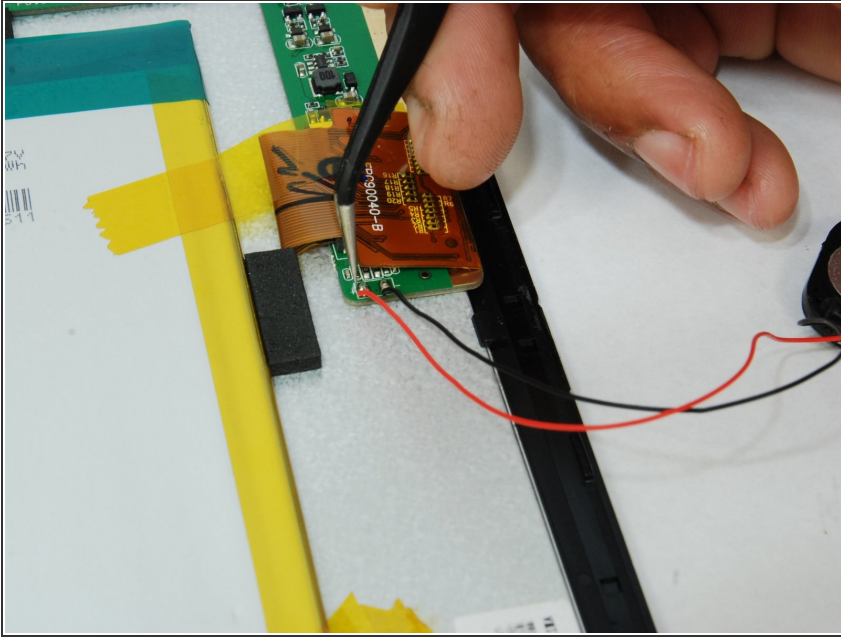
- Once all connections have been loosened and using a soft surface, place the device onto its screen.
- ⓘ *Open the casing and lay as shown in the picture keeping the speaker wires loose.*

Step 4



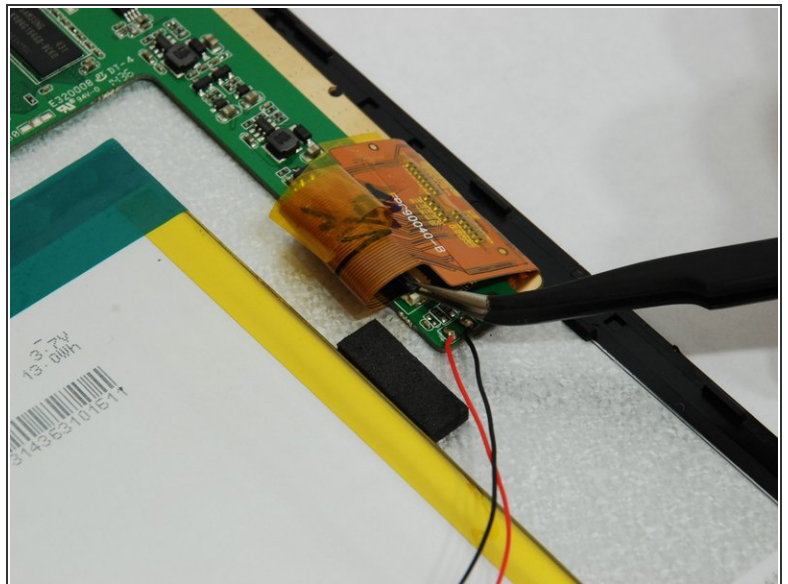
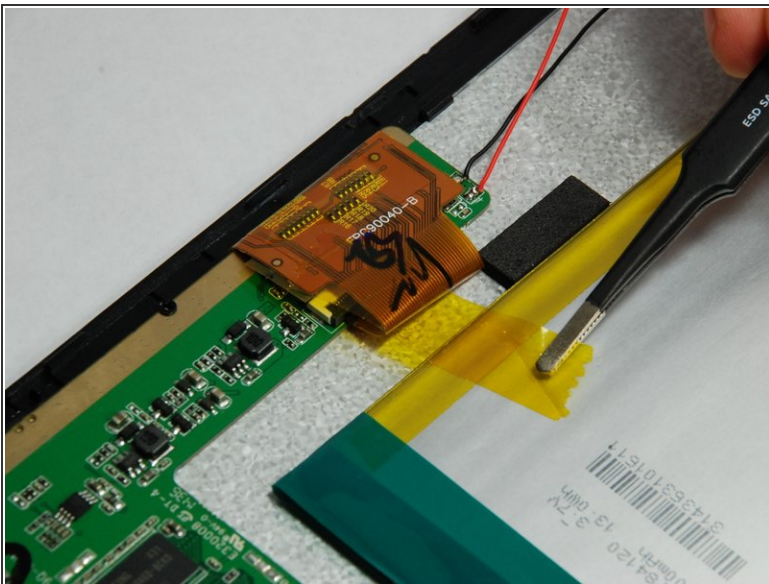
- Using ESD safe tweezers and a spudger, gently remove the glued speaker away from the casing.
- ⓘ **The speaker is still connected to the motherboard with wire.**

Step 5



- Next locate where the speaker's wires attach to the motherboard.
- ⓘ *Make note of the red and black wires positions, for mixing them can cause permanent damage to your device.*

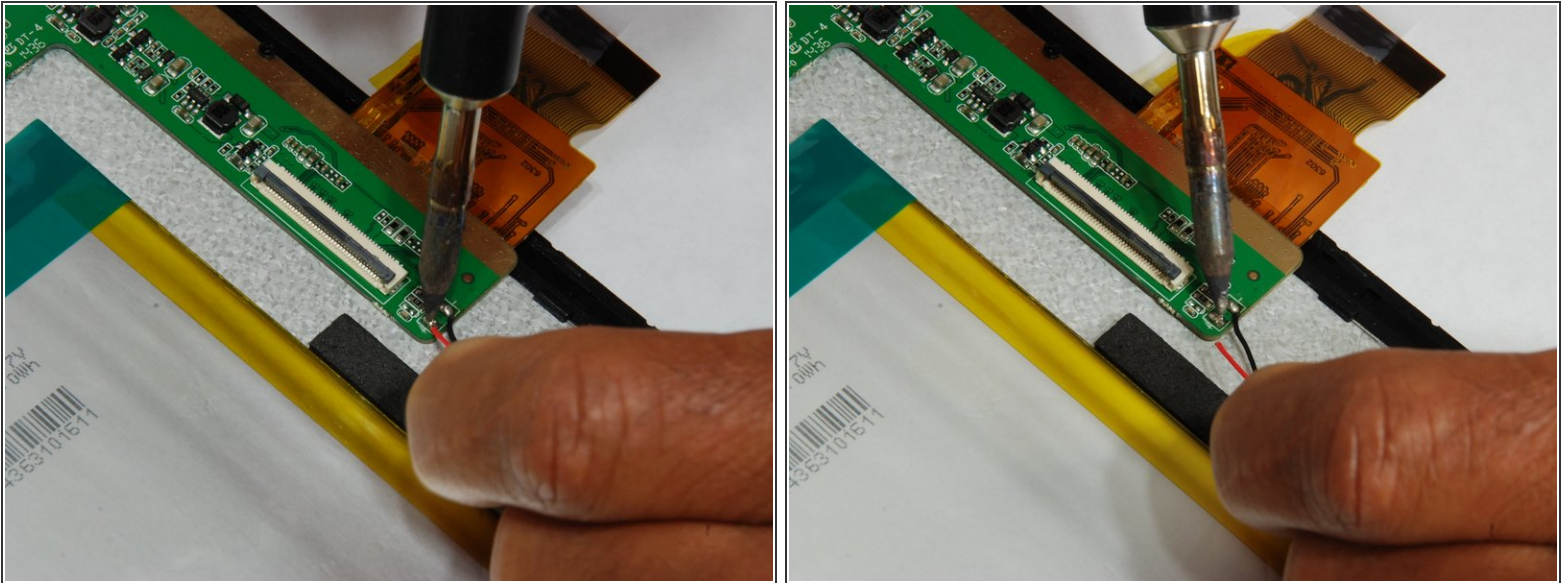
Step 6



- ⓘ *Before replacing the speaker, it's helpful to disconnect the LCD ribbon allowing sufficient space.*
- Remove the tape, and using hook tweezers, disconnect the LCD ZIF (zero insertion force) connection.
- The ZIF connection takes maneuvering, but the ribbon should be free and pushed out of the way.

This document was generated on 2020-11-21 05:00:02 PM (MST).

Step 7



- Before disconnecting the speaker, refer to [Soldering Tips](#) for proper soldering instructions.
 - ⓘ *Check the connection between the speaker and the motherboard. If it isn't connected well, re-soldering the joint may fix the speaker.*
- Use a soldering iron to remove the speaker wires.
 - ⚠ **Ensure that each wire and solder connection do not touch. This will damage the device.**
 - 📌 Note which nodes the wires are connected to, for replacement will occur in this order.

To reassemble your device, follow these instructions in reverse order.