



Razer Ouroboros Scroll Wheel Replacement

This guide will cover how to open the Razer...

Written By: Preston Darling



INTRODUCTION

This guide will cover how to open the Razer Ouroboros mouse, remove the existing scroll wheel, and replace it with a new one.

Note: Make sure the device is unplugged and powered off before continuing with this guide.

TOOLS:

Phillips #00 Screwdriver (1)
Phillips #0 Screwdriver (1)
T6 Torx Screwdriver (1)
Metal Spudger (1)
Tweezers (1)

PARTS:

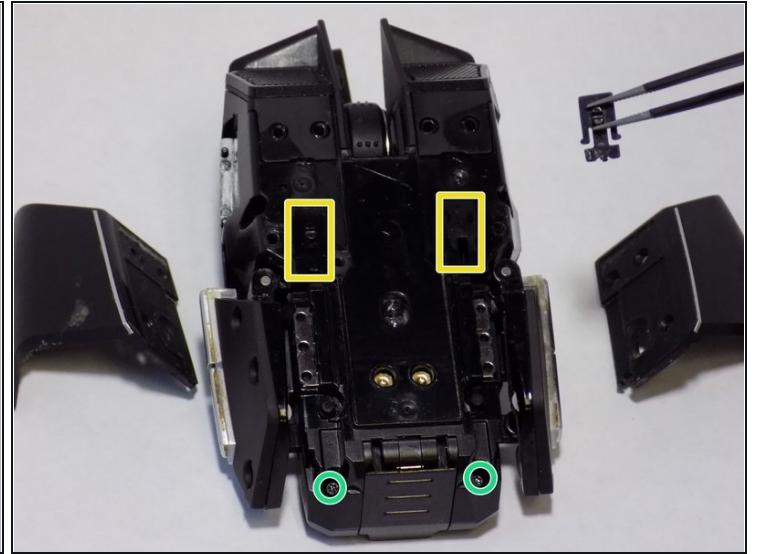
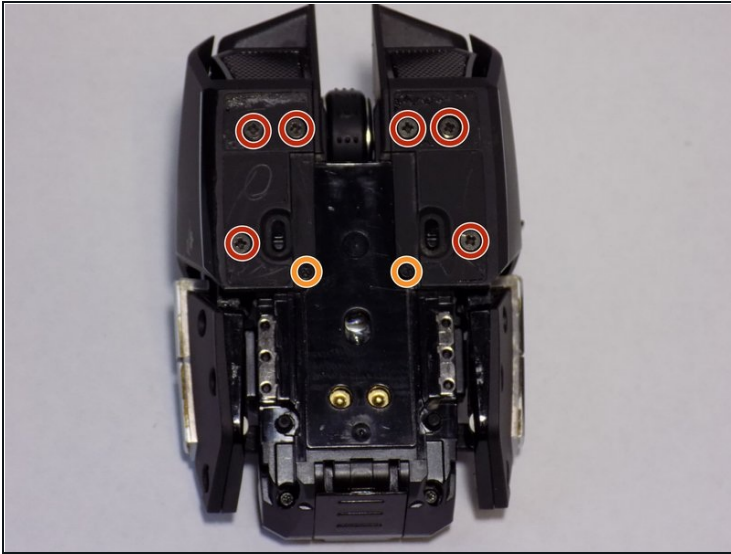
Razer Scroll Wheel or Appropriate
Sized Scroll Wheel (1)

Step 1 — Scroll Wheel



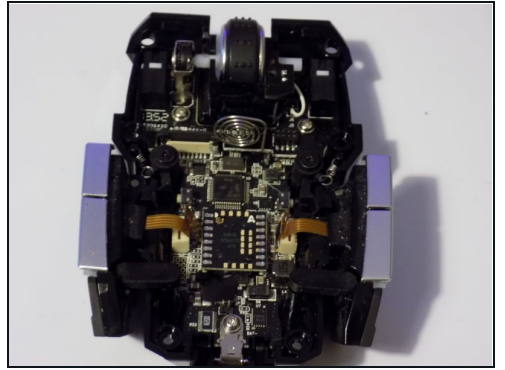
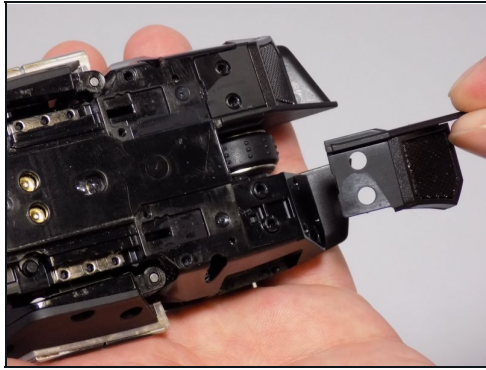
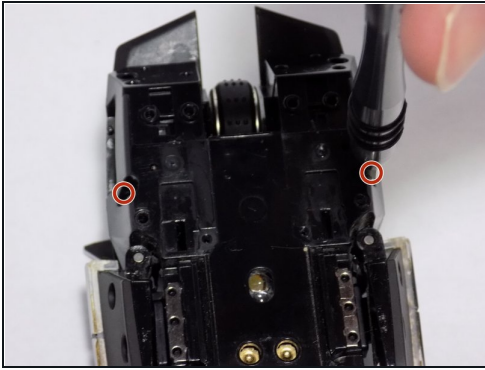
- Use a Phillips #00 screwdriver to loosen the two captive screws from the bottom of the mouse.
- Slide the palm rest out of place.

Step 2



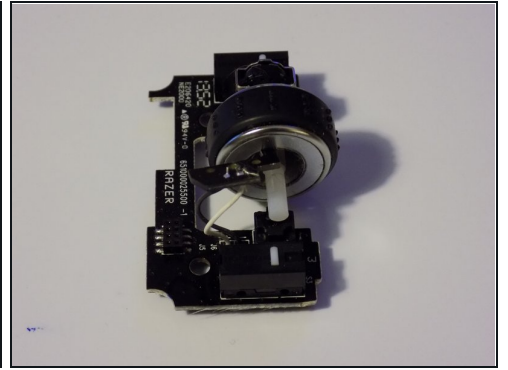
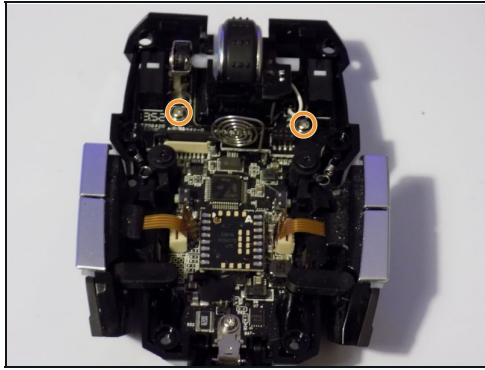
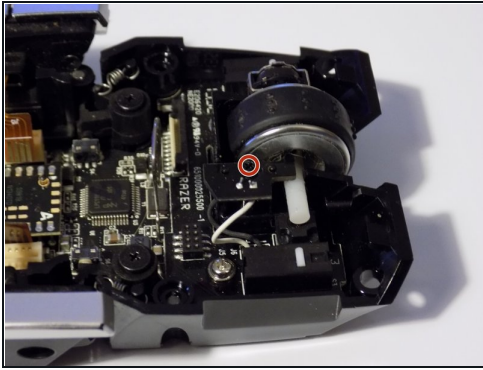
- Remove all of the stickers on the back of the mouse. After doing so, you should see six screws on the back of the mouse.
- Use the Phillips #0 Screwdriver to remove all six of these 4mm screws.
- Use the Phillips #00 Screwdriver to remove these two, 3mm screws.
- Slide the side panels off of the mouse.
- Use your [tweezers](#) to take the lock switches off of the mouse.
- Using the T6 Torx screwdriver, remove the two bottom 4mm screws as indicated in the second picture.

Step 3



- Using the T6 Torx screwdriver, remove the two 4mm screws hidden in the deep holes indicated in the first picture.
 - Slide the top panels off of the mouse.
 - Flip the mouse over, and the mouse casing should come off.
- ⚠ There are some connectors connecting the casing to the motherboard. They should slide off. Just be careful not to break them.

Step 4



- Locate the 4mm screw indicated in the first picture, use a Phillips #00 Screwdriver to remove it.
- Locate the two 4mm screws in the second picture, and remove those two with a Phillips #0 Screwdriver.
- Now, you may remove the board that holds the scroll wheel and its components. Simply slide the wheel out and replace it.
- ☑ Take note of the orientation in the final picture so that you can place the wheel back correctly into its mechanism.

To reassemble your device, follow these instructions in reverse order.