



Dashcam DOD LS300W Battery Replacement

How to change the internal battery of a Dashcam DOD LS300W.

Written By: Pierre



INTRODUCTION

This guide will show you how to replace the battery in a DOD LS300W Dash cam. For this guide, you will need a tool to open up the dash cam, a soldering iron, and the a little [soldering](#) skills. This is a relatively easy repair, but be careful with the soldering iron to not burn yourself.



TOOLS:

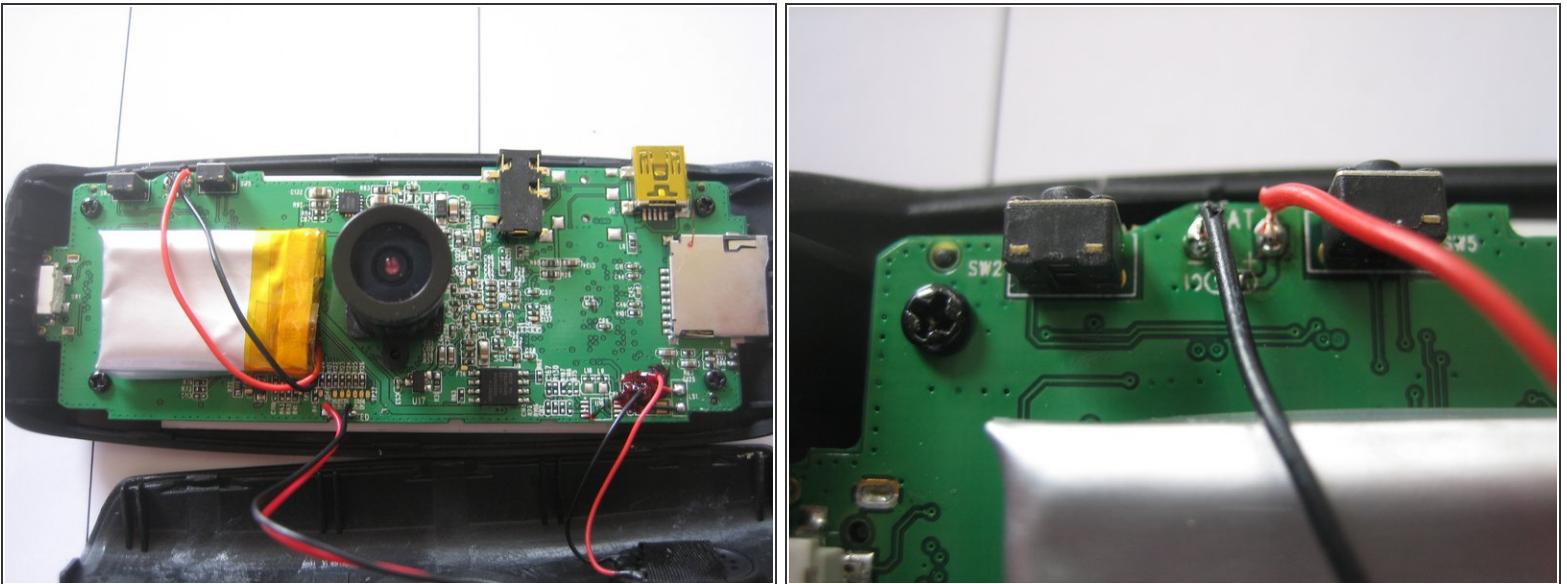
- [Soldering Iron](#) (1)
 - [iFixit Opening Tools](#) (1)
-

Step 1 — This is the dashcam DOD LS300W



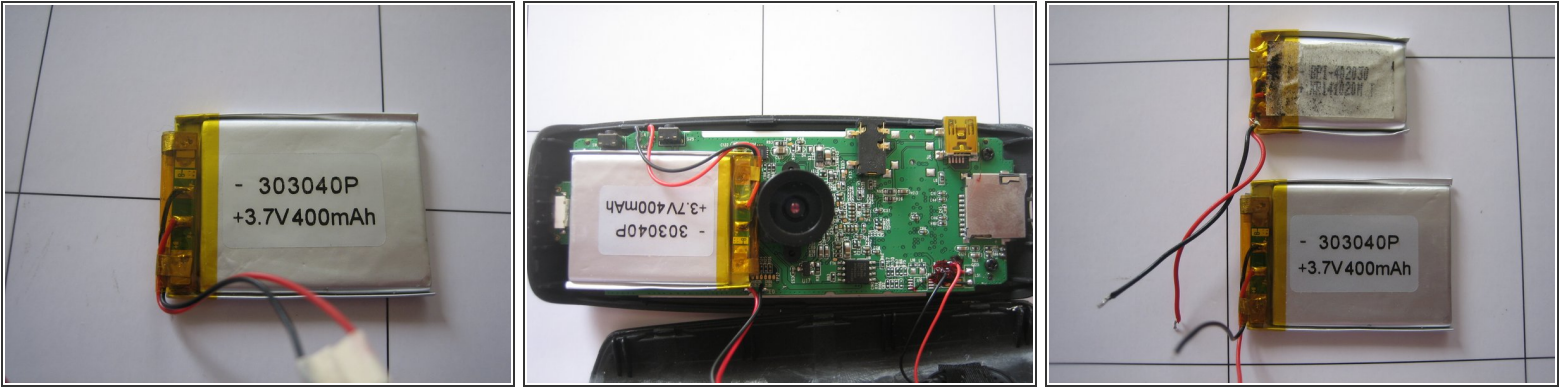
- Using an opening tool, pry open the seam on the bottom of the dash cam to separate the two parts of the device.

Step 2



- ⓘ Notice the connection of + and - on the top left side of the inside of the dash cam. Make note of this as it will be important to remember when you solder on the new battery.
- Desolder the old battery. This is a 250mAh.

Step 3



- The new battery is 400mAh. and fits just in the battery location.
 - Solder in the new battery.
 - Then place the new battery into the space previously occupied by the old battery.
 - See the difference between old and new battery.
- i** Be careful to solder the positive side of the new battery into the same spot that the old battery was soldered into.

Step 4



- Put the dashcam back together.
- Charge the battery to the full level, and you are ready to go.

To reassemble your device, follow these instructions in reverse order.

Once again, thank you for checking out this guide and I hope it helped!