



# wireless charger circuit board Replacement

How to on how to replace the circuit board on a wireless charger.

Written By: Bill



---

## INTRODUCTION

How to on how to replace the circuit board on a wireless charger.



### TOOLS:

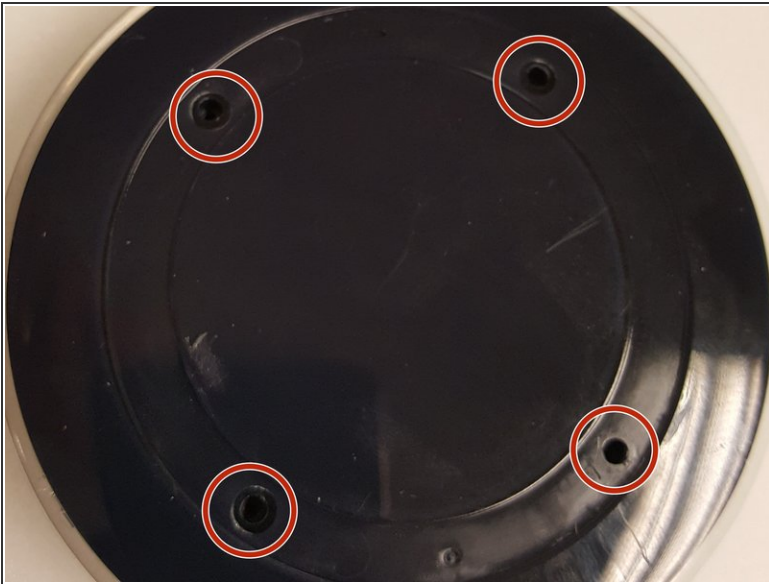
- [Spudger](#) (1)
  - [Phillips #1 Screwdriver](#) (1)
-

## Step 1 — Remove padding



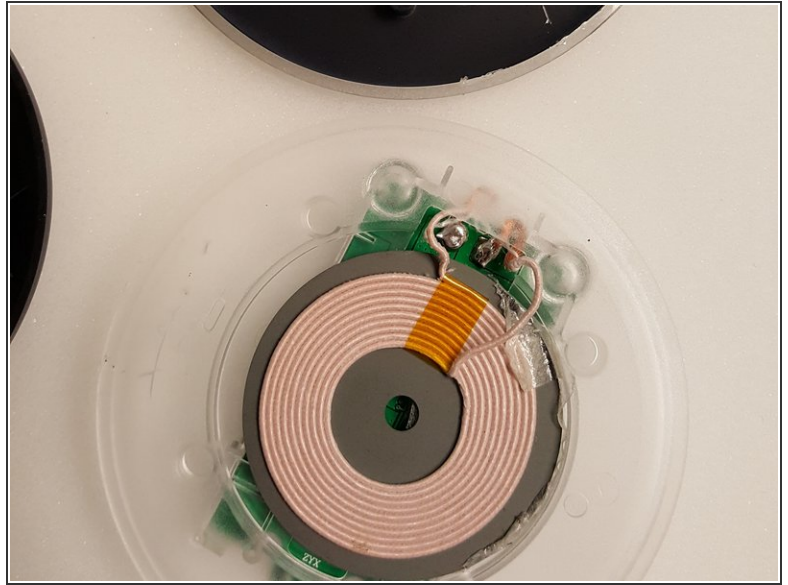
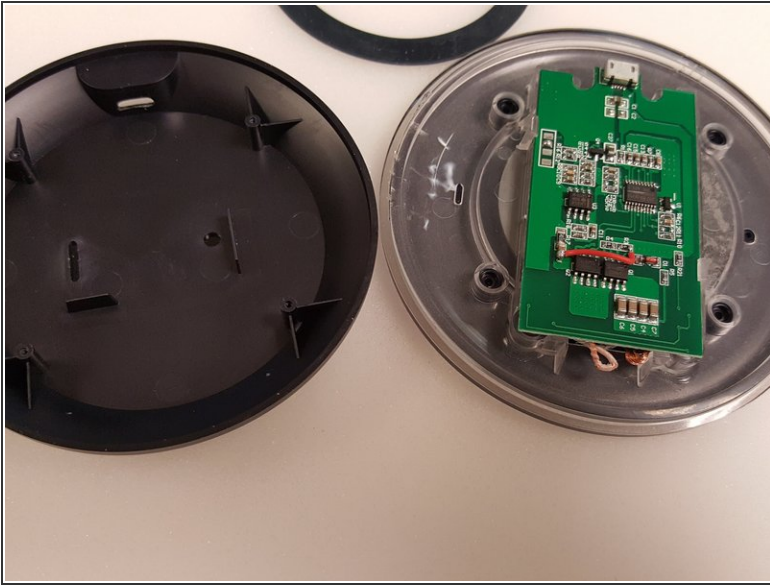
- Remove the padding by using a flat tool to remove adhesive and pry padding off of device. Be careful not to rip or tear.

## Step 2 — Remove Screws



- Remove (4) phillips head screws holding device together. I used a #1.2mm phillips head screwdriver.

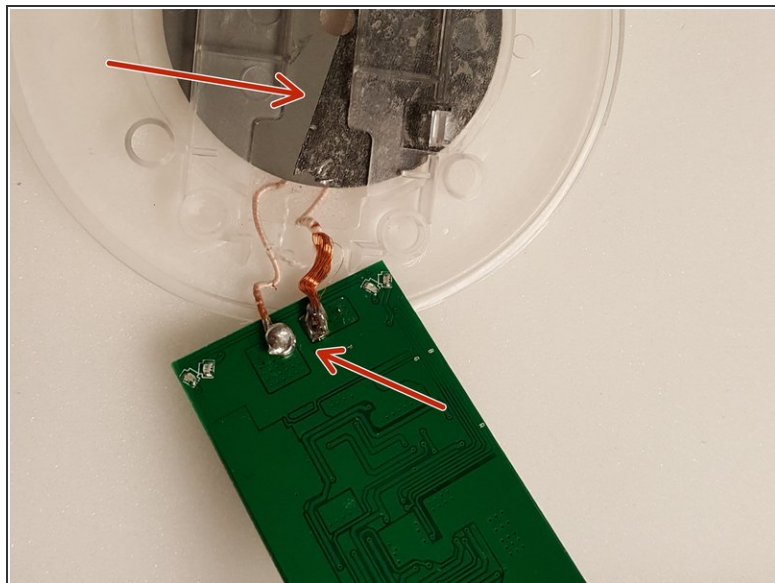
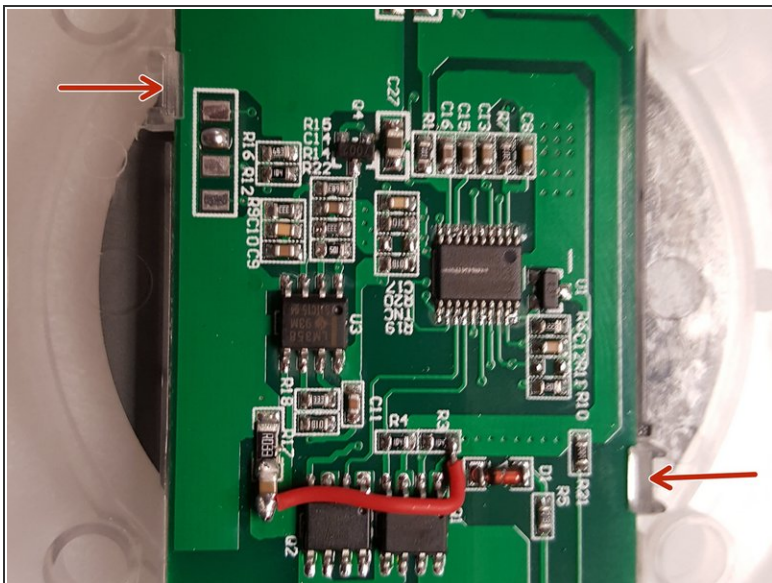
### Step 3 — Pry away bottom and top covers



- Gently pry bottom cover off of device. This will expose the circuit board.
- Gently pry top cover off device. This will expose the charging unit of the device.

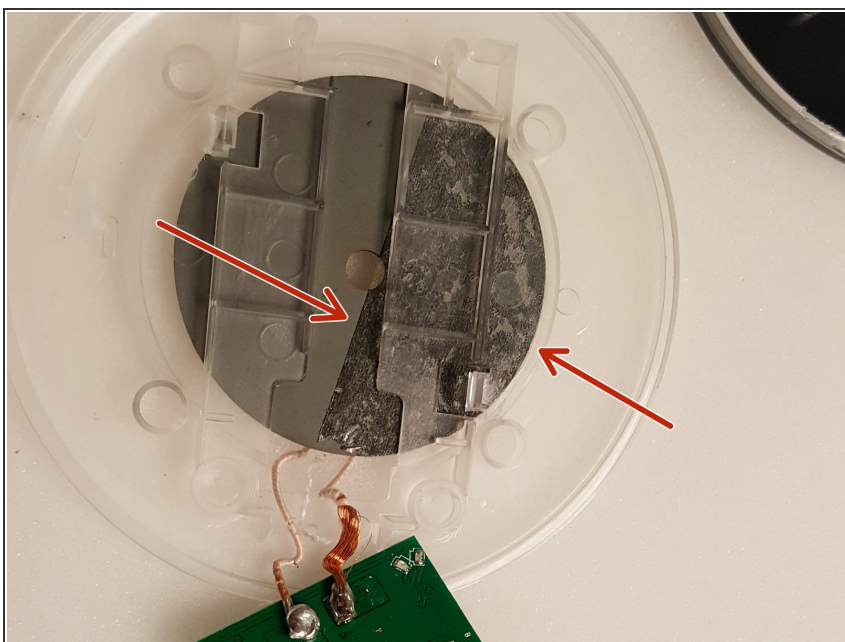


## Step 4 — Removing Circuit Board



- There are two clips holding the circuit board in. Using a flat surfaced tool pry on one clip until the circuit board pops up and then you can pull board out.
- The charging device is soldered to the board so be aware and careful not to break the solder or wire to device.

## Step 5 — Remove Charging Unit



- The charging unit is held on to the top of the device by adhesive. Simply use a prying tool with a flat surface to gently pry away from adhesive.

## Step 6



- Once circuit board and charging unit have been removed you can replace with a new one. Don't forget the adhesive tape. Use reverse order!
- Note: There may be soldering involved if you only want to replace board and not charging unit.

To reassemble your device, follow these instructions in reverse order.