



# bObi Pet Speaker Replacement

bObi Pet's speaker lets you know whenever she powers up and starts or stops working. If it is no longer working as such, follow these steps for a very easy repair.

Written By: Chelsea



## INTRODUCTION

Using a Phillips head screwdriver and these instructions, you can easily open bObi Pet and replace the speaker yourself. Just remember to hold on to parts removed from bObi and keep them organized as they may be needed for reassembly.



### TOOLS:

- [Phillips #2 Screwdriver](#) (1)



### PARTS:

- [bObi Pet Speaker](#) (1)

## Step 1 — Turn bObi Pet Off



- Before we get started, turn bObi Pet OFF and flip her over onto a flat surface.
- Next, remove bObi Pet's dustbin. Grip the small tab on the back of the bin, and pull to remove.

## Step 2 — Remove the Front Wheel



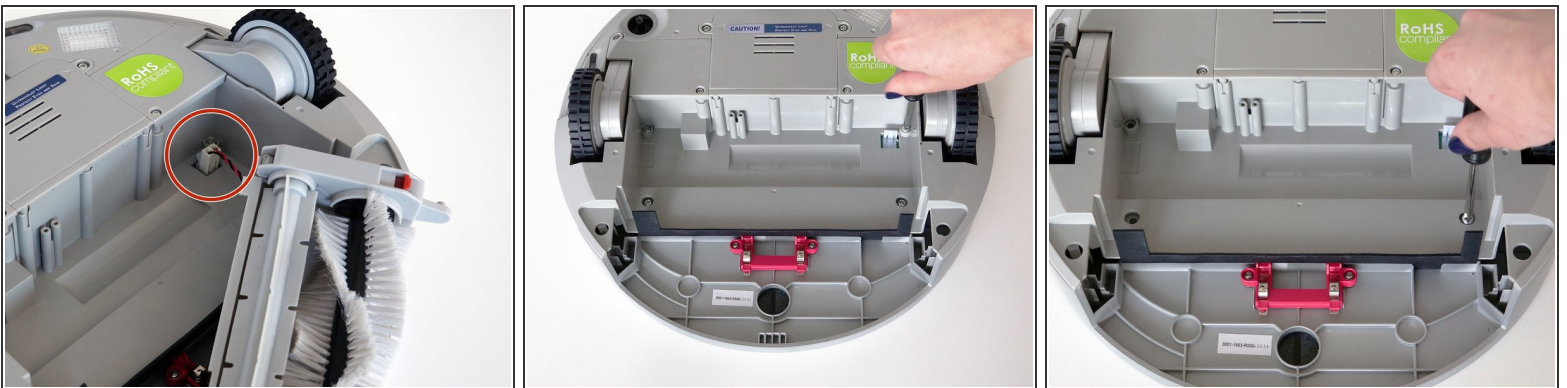
- Grip the front wheel and pull straight up, using the screwdriver for leverage.
  - The wheel will pop out and you will see two screws beneath it.
  - There is a larger screw set deeper in the wheel compartment. Use the screwdriver to remove it.
- ☑ Remember to keep all screws and parts removed from bObi Pet safely aside during the repair. They may be needed for re-assembly.

### Step 3 — Remove the Dustbin's Holders



- Remove the screws on both sides of bObi Pet's dustbin. Then, remove the corner pieces that were held down by the screws.
- Grip the brush compartment and pull down to reveal two screws on a red fastener.
- Remove them with the screwdriver.

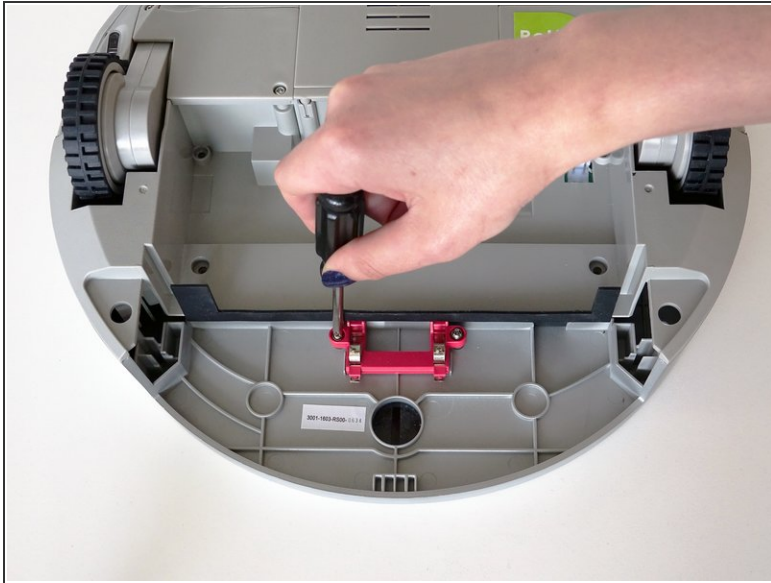
### Step 4 — Remove the Main Brush Attachment



- Pull the brush compartment up until the fastener is freed from bObi Pet. Then, detach the brush compartment's circuit plug and set it aside.
- Remove the 4 screws located beneath the brush compartment.

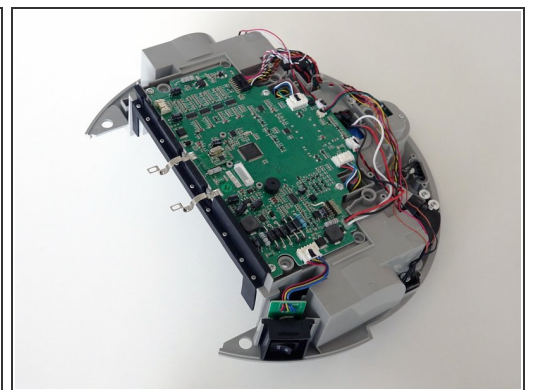
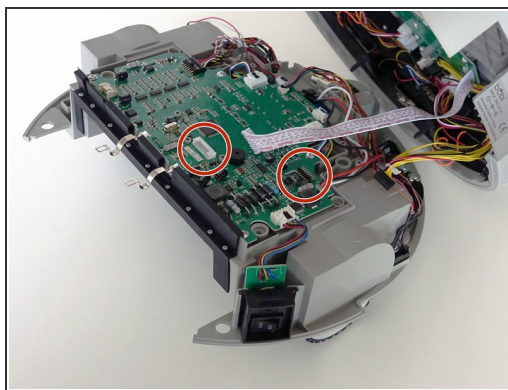
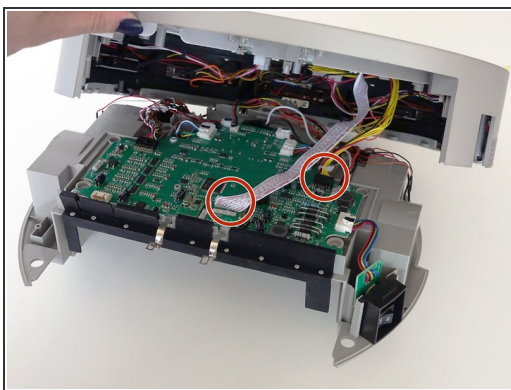


## Step 5 — Remove the Cover Screws



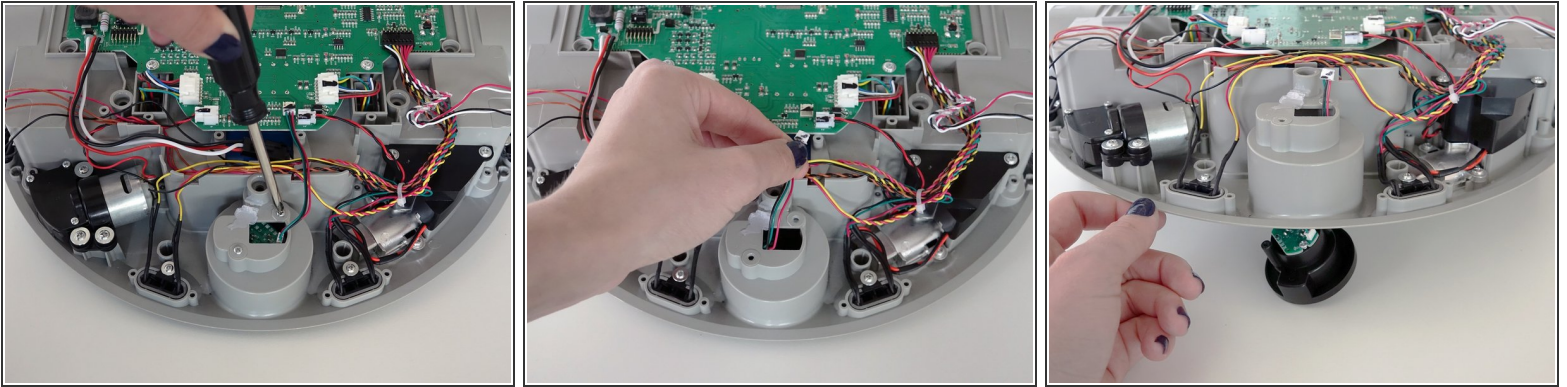
- Remove the 2 screws on the dustbin's red fastener.
- Remove the fastener and set it aside for reassembly.
- The cover is no longer secured, so carefully flip bObi Pet onto her wheels.

## Step 6 — Detach the Cover



- Lift the cover to reveal the main board underneath.
- Remove the two circuit plugs connecting the lid to the mainboard.
- bObi Pet's cover is entirely separated, and you may now access any of her internal parts for replacement.

## Step 7 — Remove the Speaker



- bObi Pet's speaker is located on top of her front wheel. Remove the two screws securing the speaker onto bObi. Keep these screws close by for later reassembly.
- Then, disconnect the small circuit plug on the top of the mainboard, near the front wheel.
- The speaker will fall out of place underneath bObi Pet.

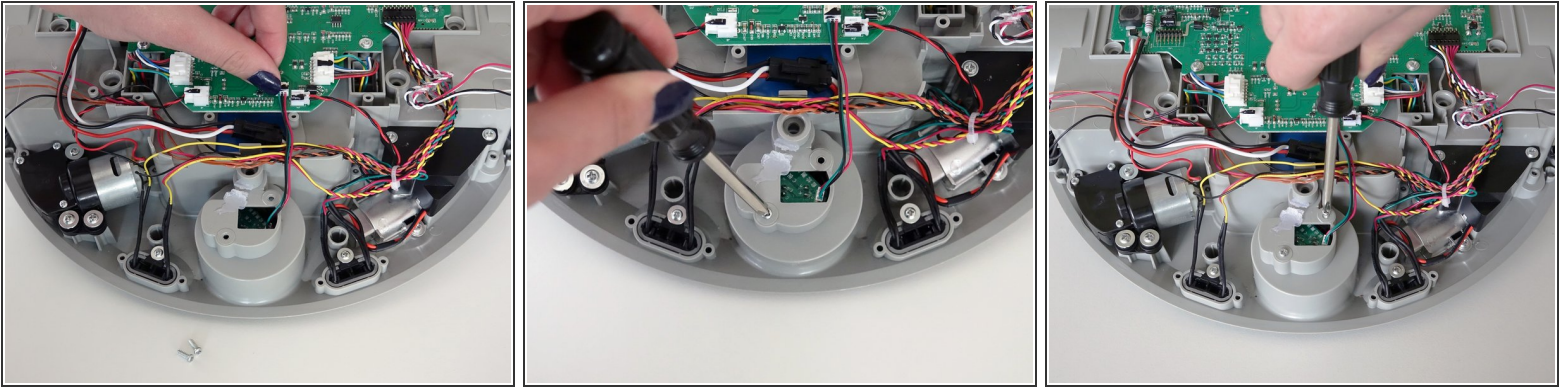
## Step 8 — Place a New Speaker



- Remove bObi Pet's speaker from underneath her.
- Place the new speaker in the empty space with the wires poking through the opening in bObi Pet.



## Step 9 — Secure the Speaker



- Then, reattach the circuit plug to the main board. Re-install the two screws and you're ready to close the cover.
- ☑ You will have to hold the speaker from underneath to align the screws with the screw posts on the speaker.
- Continue to the guide for closing bObi Pet: [Assemble bObi Pet Post-Repair](#)

For assistance re-assembling bObi Pet, see the guide on closing the cover: [Assemble bObi Pet Post-Repair](#)