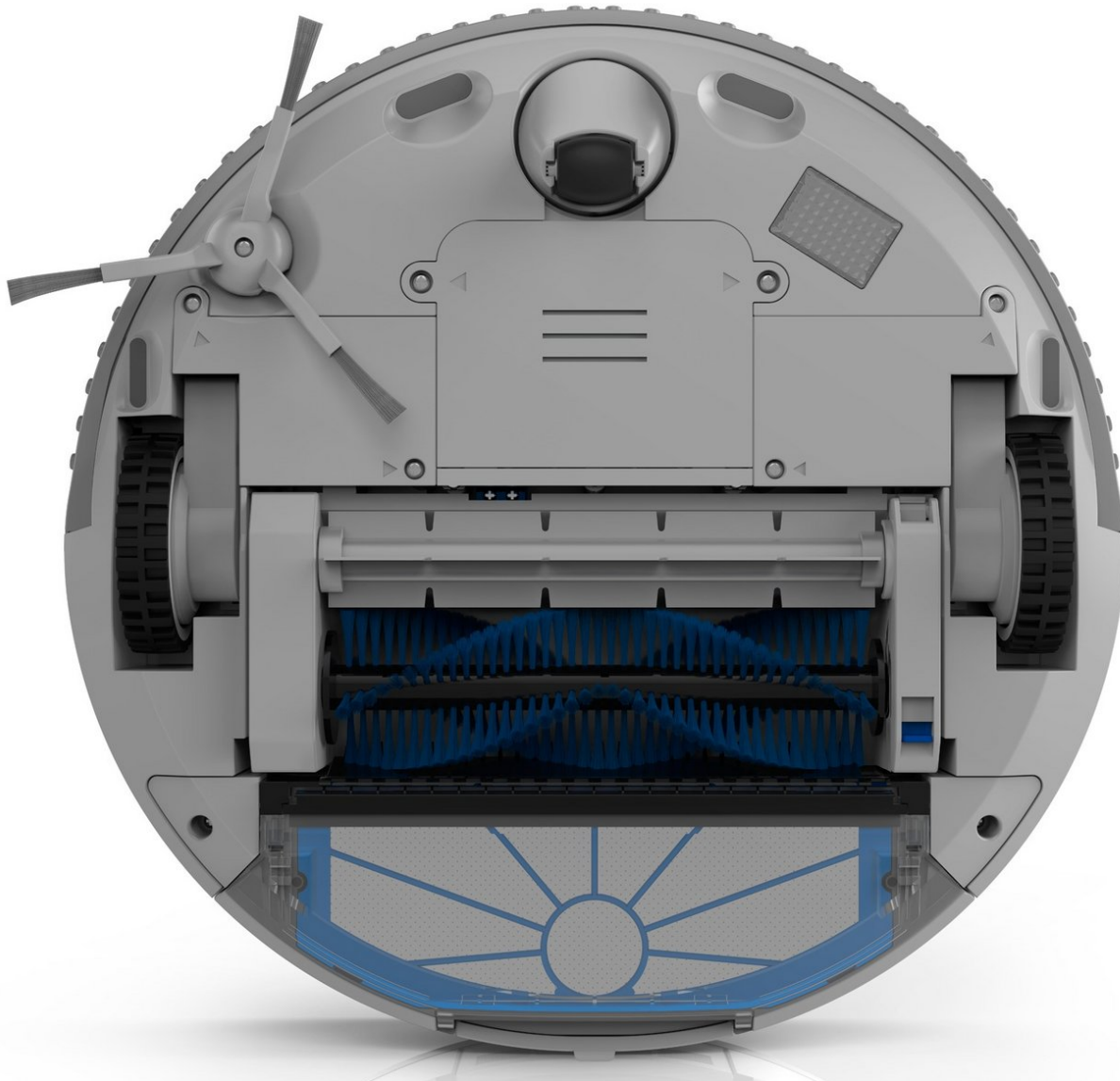




# bObi Pet Edge Sensors Replacement

bObi Pet uses four edge sensors on her underbelly to avoid going over stairs or any other ledges that could cause her to fall in your home. If bObi Pet's remote shows error 1, even after cleaning the sensors, a replacement may be necessary.

Written By: Chelsea



## INTRODUCTION

This guide will help you open up bObi and replace the edge sensors. Before opening bObi for this repair, try cleaning the floor sensors with a dry cloth.

If you'd like a video tutorial on this replacement, see: <https://www.youtube.com/watch?v=7eh3TSj4...>



### TOOLS:

- [Phillips #2 Screwdriver](#) (1)



### PARTS:

- [bObi Pet Floor Sensors](#) (1)

## Step 1 — Turn bObi Pet Off



- Before we get started, turn bObi Pet OFF and flip her over onto a flat surface.
- Next, remove bObi Pet's dustbin. Grip the small tab on the back of the bin, and pull to remove.

## Step 2 — Remove the Front Wheel



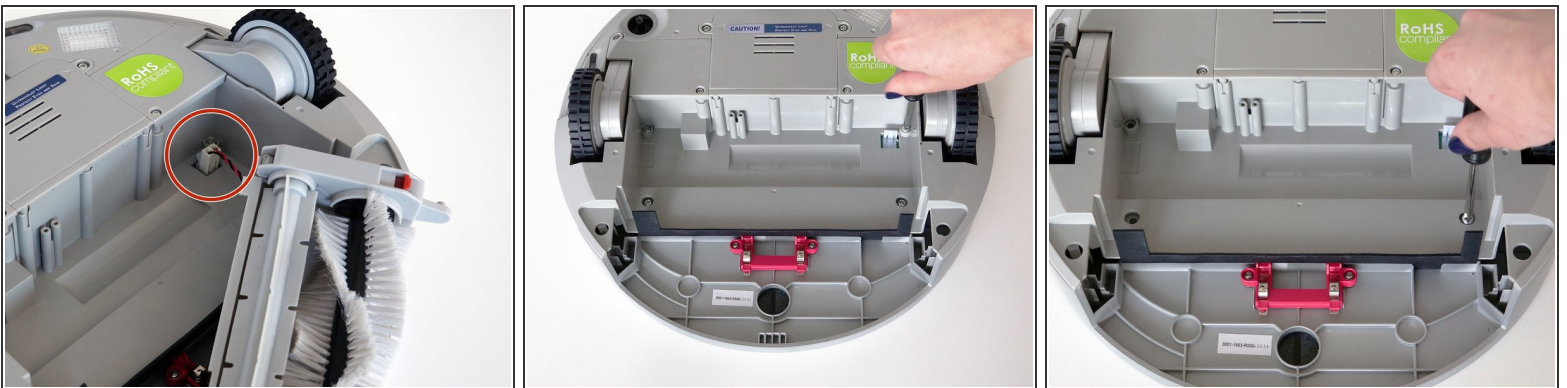
- Grip the front wheel and pull straight up, using the screwdriver for leverage.
  - The wheel will pop out and you will see two screws beneath it.
  - There is a larger screw set deeper in the wheel compartment. Use the screwdriver to remove it.
- ☑ Remember to keep all screws and parts removed from bObi Pet safely aside during the repair. They may be needed for re-assembly.

### Step 3 — Remove the Dustbin's Holders



- Remove the screws on both sides of bObi Pet's dustbin. Then, remove the corner pieces that were held down by the screws.
- Grip the brush compartment and pull down to reveal two screws on a red fastener.
- Remove them with the screwdriver.

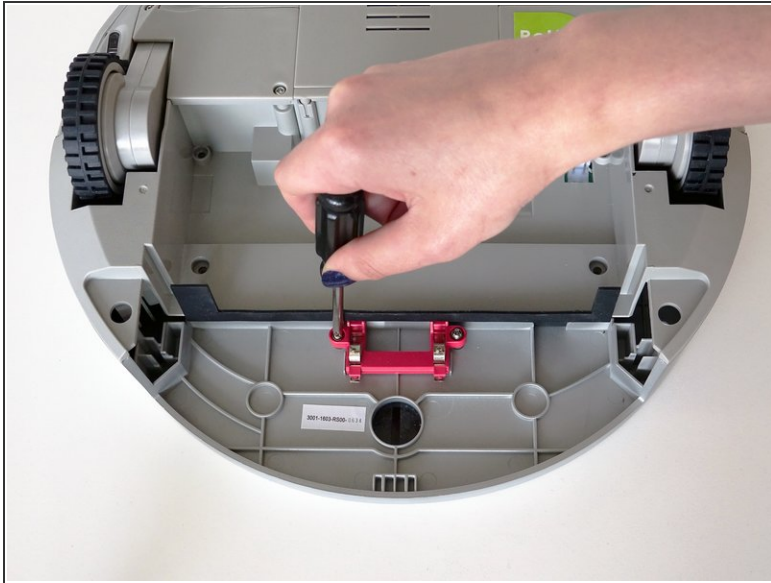
### Step 4 — Remove the Main Brush Attachment



- Pull the brush compartment up until the fastener is freed from bObi Pet. Then, detach the brush compartment's circuit plug and set it aside.
- Remove the 4 screws located beneath the brush compartment.

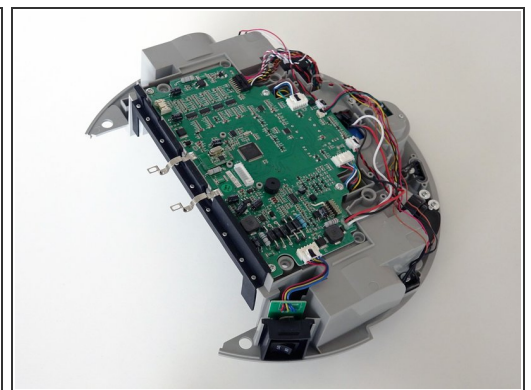
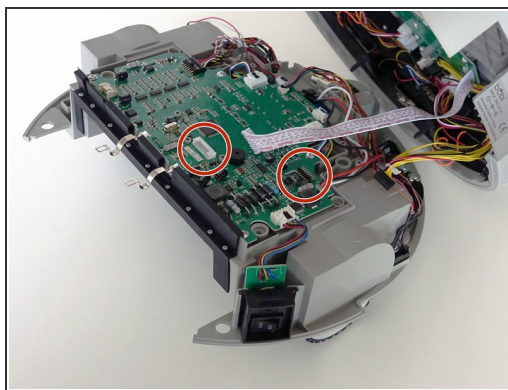
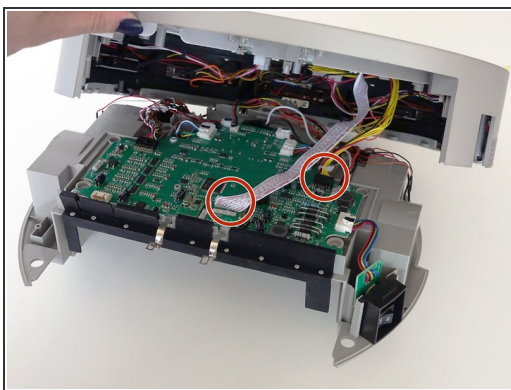


## Step 5 — Remove the Cover Screws



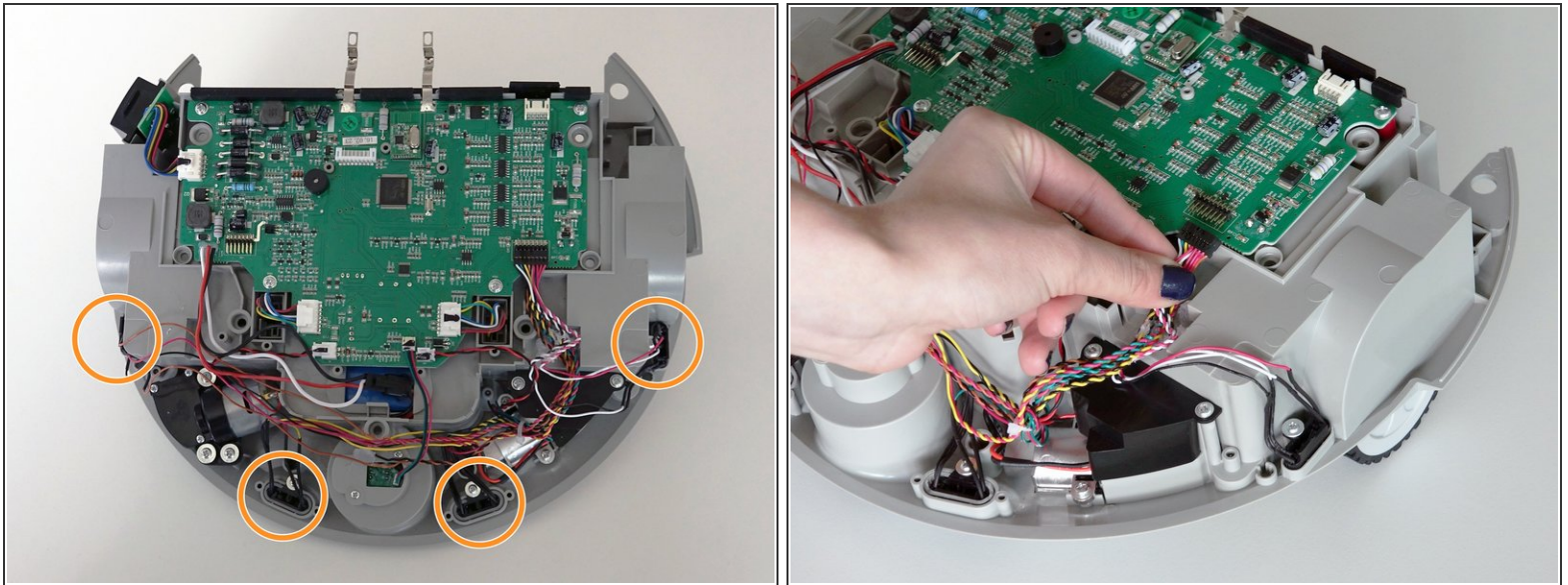
- Remove the 2 screws on the dustbin's red fastener.
- Remove the fastener and set it aside for reassembly.
- The cover is no longer secured, so carefully flip bObi Pet onto her wheels.

## Step 6 — Detach the Cover



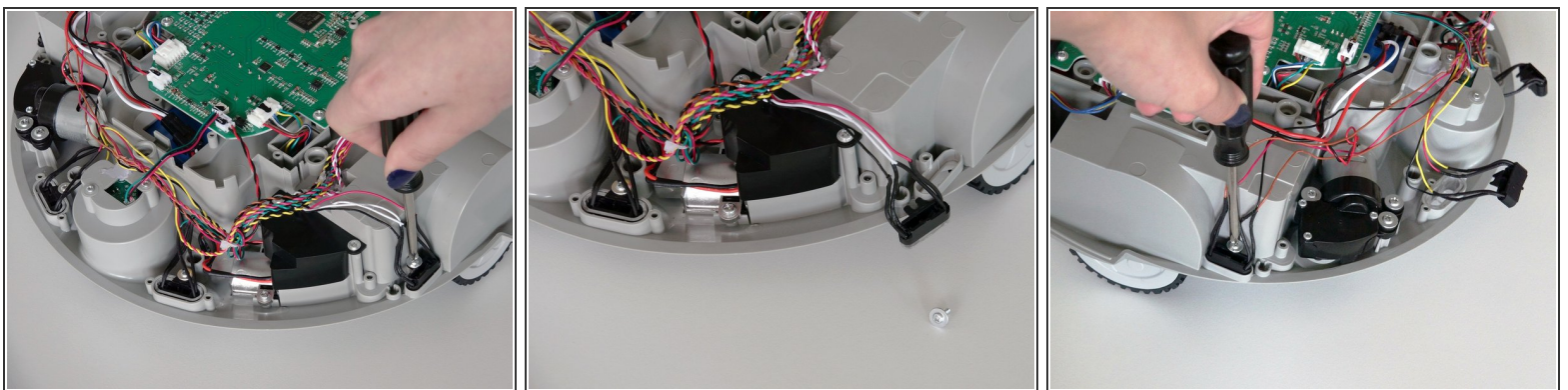
- Lift the cover to reveal the main board underneath.
- Remove the two circuit plugs connecting the lid to the mainboard.
- bObi Pet's cover is entirely separated, and you may now access any of her internal parts for replacement.

## Step 7 — Unplug the Edge Sensors



- bObi Pet has 4 edge sensors along her front edge.
  - They attach to the left side of her mainboard. Pull to remove the circuit plug.
- ☑ If there is glue holding down the wires, you may scrape it off using your screwdriver.

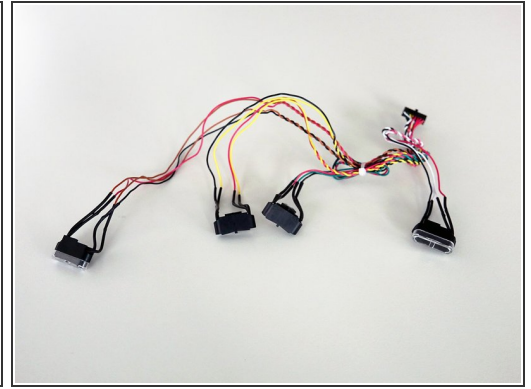
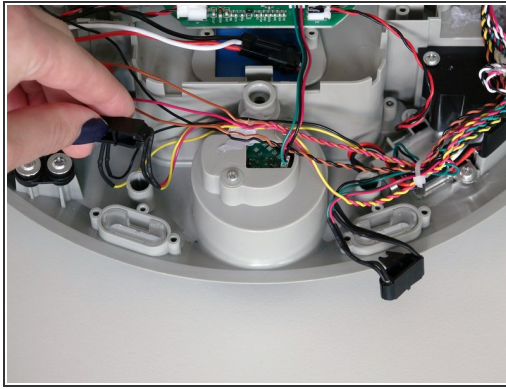
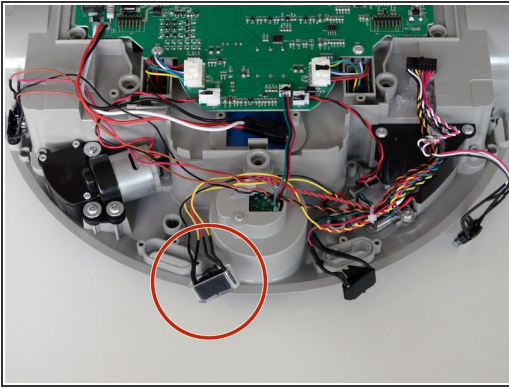
## Step 8 — Remove the Sensor Screws



- There is one screw holding each edge sensor in place. Remove all four screws and keep them aside for reassembly.

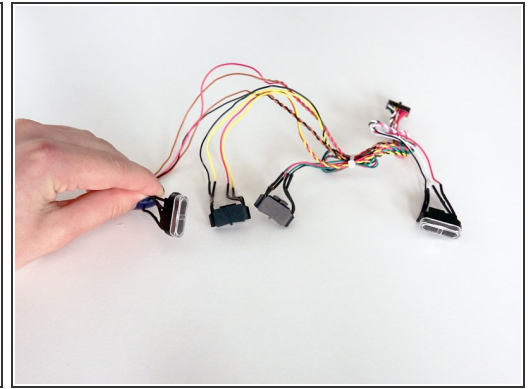
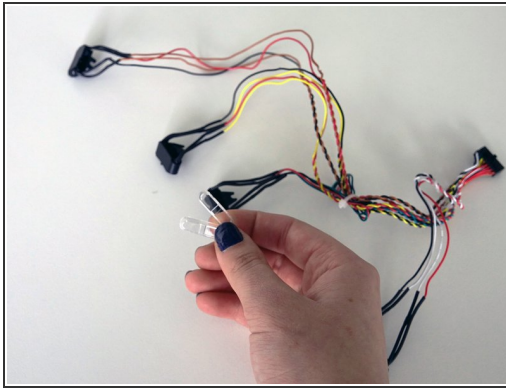
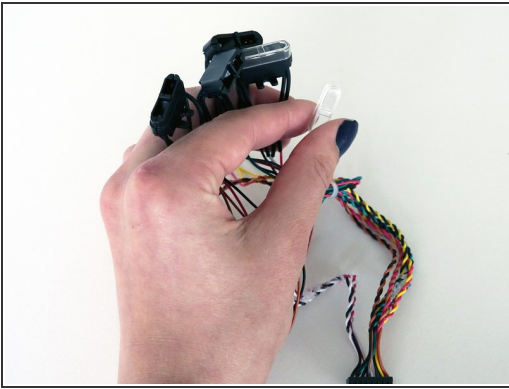


## Step 9 — Remove the Sensors



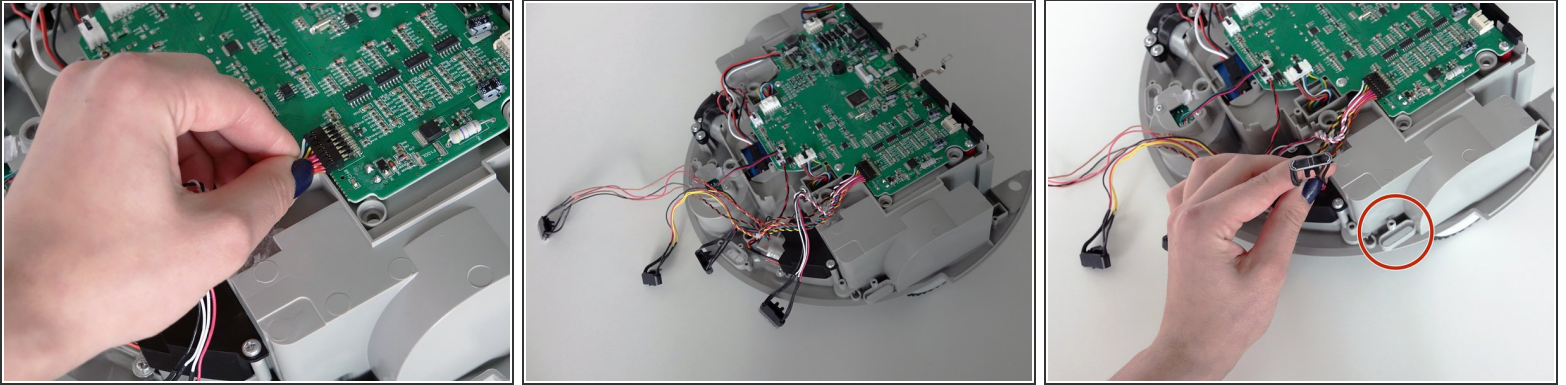
- Do not remove the clear covers from the two sensors closest to bObi Pet's front wheel. If they get stuck to the sensors, simply replace them on bObi Pet.
- Lift each of the sensor pieces out, and you'll be ready to install your new ones.

## Step 10 — Attach the Covers



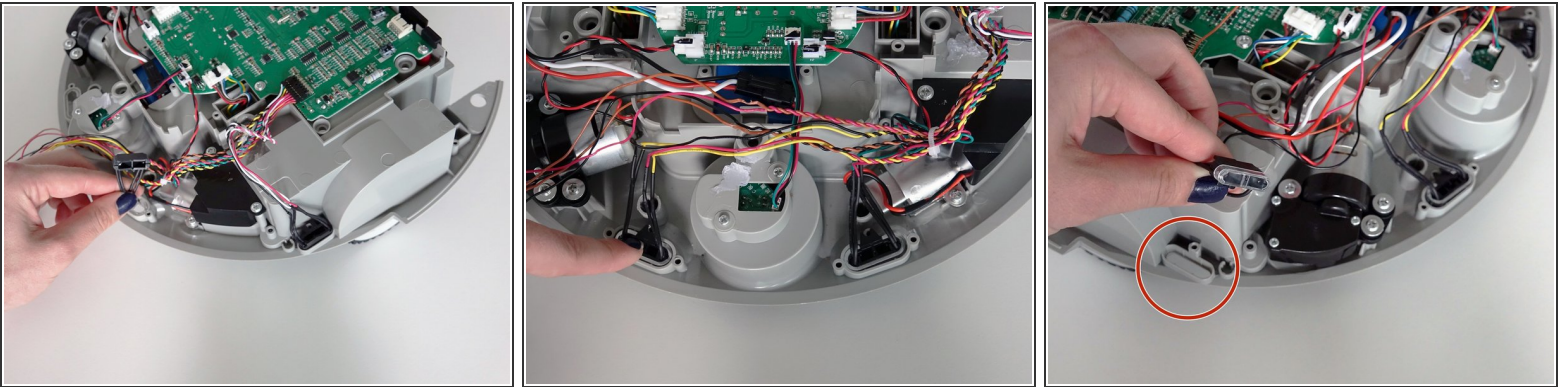
- The outer two sensors will have smaller clear covers attached. Make sure to remove these two covers and attach them to the outer sensors on your replacement part.
- One cover will fit on the sensor with red and white wires.
- The other should be placed on the sensor with red and brown wires.

## Step 11 — Connect the New Sensors



- Attach the sensors' circuit plug to the mainboard. You should be able to tell where each sensor sits on bObi Pet by the length of its wires.
- The sensor with the shortest wire goes in front of bObi Pet's left wheel.

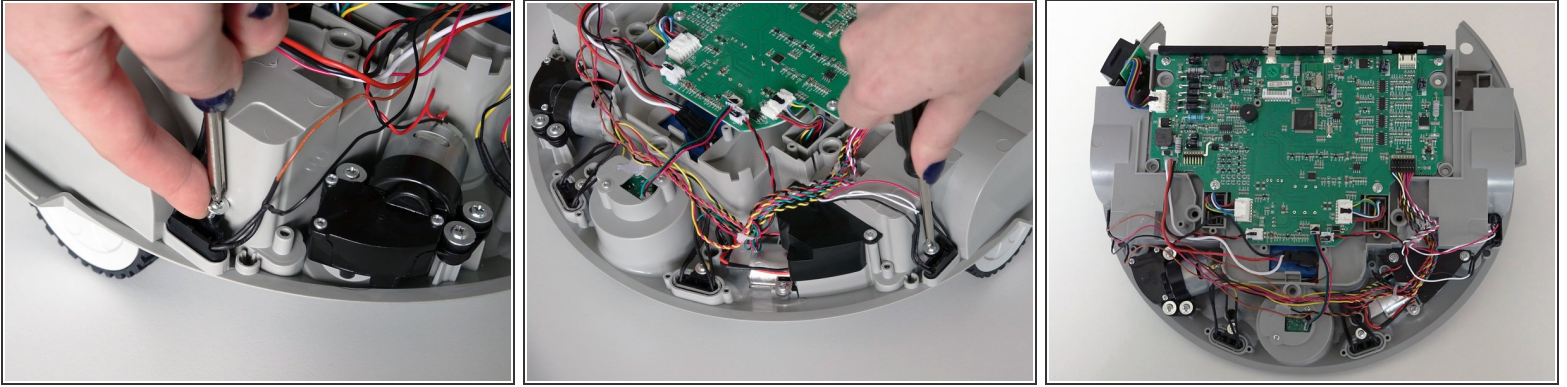
## Step 12 — Place the New Sensors



- The sensor with a green wire goes beside it. Then the yellow-wired sensor is next.
- Then the final sensor and its cover will fit in front of bObi Pet's right wheel.



## Step 13 — Secure the Sensors



- Re-install one screw onto each sensor.
- You may add glue or electrical tape to the new circuit plug for a more secure hold.
- Be sure to tuck any protruding wires into the crevices around the mainboard and you're ready to close the cover.
- For help closing the cover, refer to the re-assembly guide: [Assemble bObi Pet Post-Repair](#)

Congratulations on replacing bObi Pet's edge sensors! To finish off this repair, you'll want to close bObi Pet's cover. Find the guide here: [Assemble bObi Pet Post-Repair](#)