



# Assemble bObi Pet Post-Repair

This guide will help you close bObi Pet after opening and replacing any of her internal parts.

Written By: Chelsea



---

## INTRODUCTION

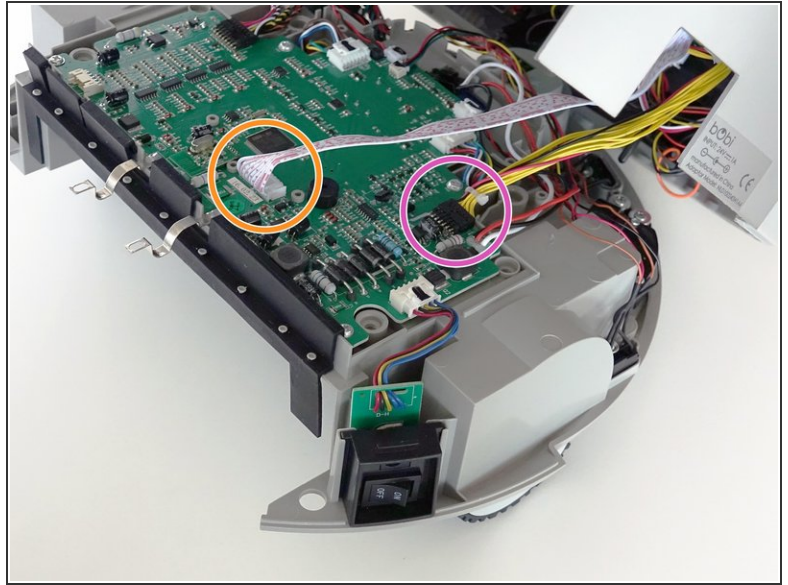
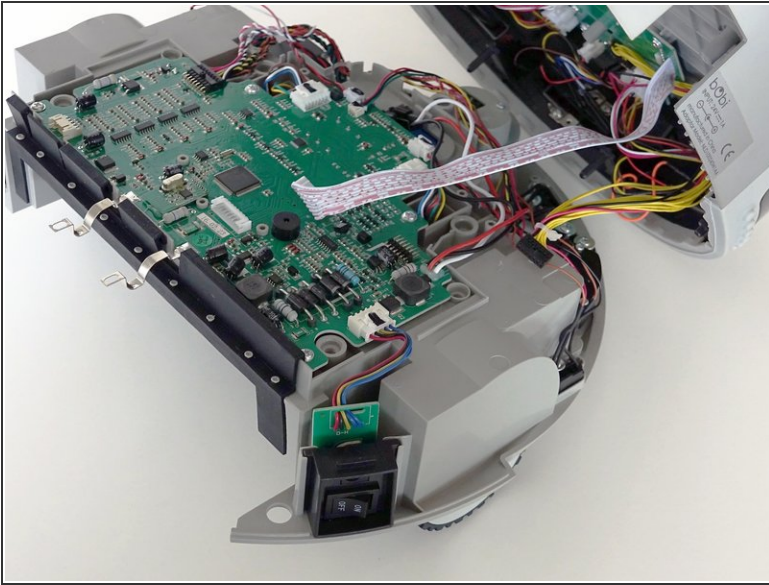
Follow these steps to finish off a home repair and bObi Pet will be ready to return to cleaning. Remember you'll need a Phillips head screwdriver and all the screws removed during disassembly.

---

### **TOOLS:**

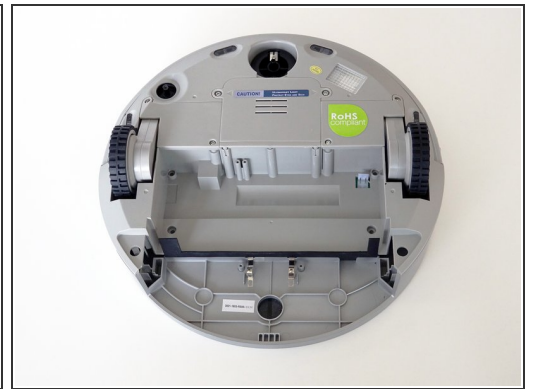
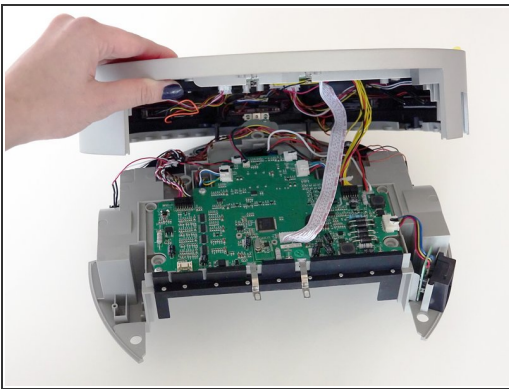
- [Phillips #2 Screwdriver](#) (1)
-

## Step 1 — Connect the Cover



- Attach the 2 circuit plugs from bObi Pet's cover back onto her main board.
- The yellow-wired plug connects to the right side of the mainboard.
- The white-wired plug on bObi Pet's lid connects to the middle of the mainboard.

## Step 2 — Align bObi Pet's Cover



- Lay down bObi Pet's cover and line up the edges precisely.
- While holding bObi Pet's top and bottom together, carefully flip her over onto a flat surface.

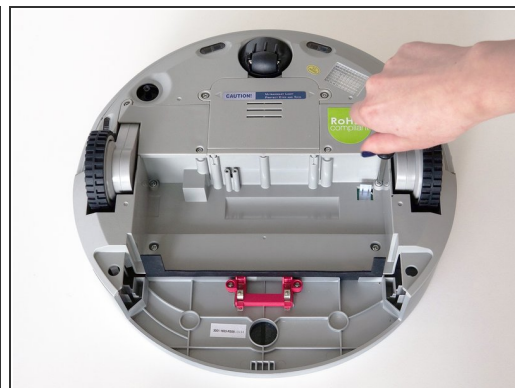
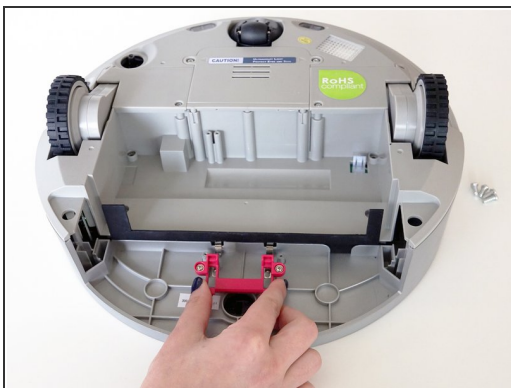


### Step 3 — Replace the Front Wheel



- Reinstall the front wheel's screw.
- Then, place the front wheel on top and firmly push down to secure it.

### Step 4 — Secure the Cover



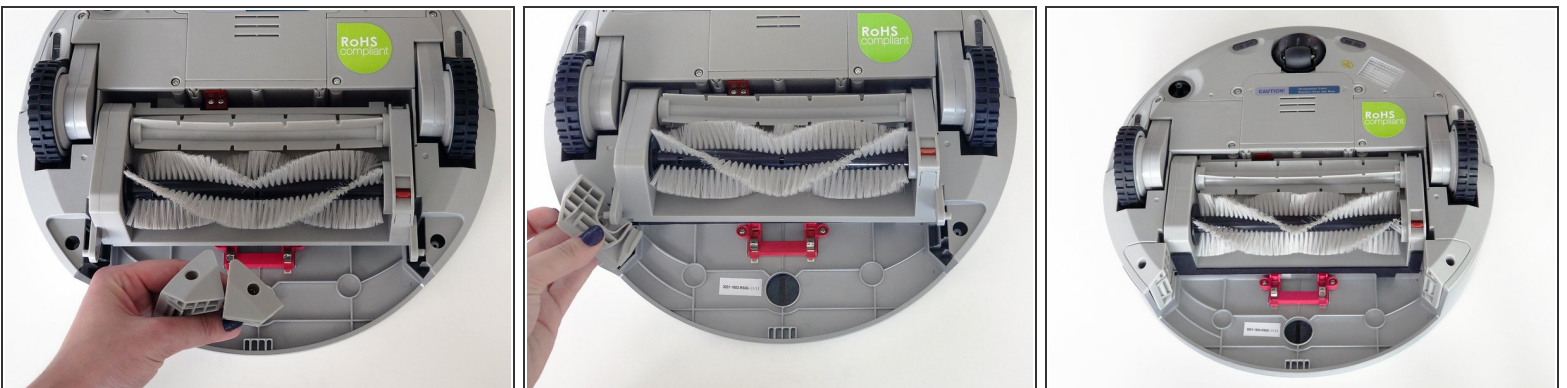
- Replace the dustbin's red fastener and install its 2 screws.
- Install the 4 screws in the space beneath the brush compartment.

## Step 5 — Secure the Brushes on bObi Pet



- Plug in the brush compartment.
- Then, replace its red brush fastener and install the 2 screws.

## Step 6 — Replace the Bin Holders



- Position the brush compartment back in its original place on bObi Pet.
- Now reinsert the corner pieces on both sides of the dustbin, with the arms of the brush attachment linked.

## Step 7 — Replace the Dustbin



- Ensure the rubber strip near bObi Pet's dustbin is not stuck underneath the brush compartment. Then, reinstall the 2 screws in each of the corner pieces.
- Make sure the bin can slide in easily before using bObi Pet again and your repair is complete.

After completing these steps, your bObi Pet should be back together in working order. Just replace any brushes and filters that may have been removed during disassembly.

Congratulations on completing your repair and happy cleaning!