



Open bObi Pet Robotic Vacuum for Repair

An important guide for any internal repair you wish to do on bObi Pet. Follow this in reverse order to close bObi Pet after replacing any parts, or see the Closing bObi Pet guide.

Written By: Chelsea



INTRODUCTION

Using just a Phillips head screwdriver, you can open a bObi Pet yourself and access any internal parts for replacement.

TOOLS:

- [Phillips #2 Screwdriver](#) (1)
-

Step 1 — Turn bObi Pet Off



- Before we get started, turn bObi Pet OFF and flip her over onto a flat surface.
- Next, remove bObi Pet's dustbin. Grip the small tab on the back of the bin, and pull to remove.

Step 2 — Remove the Front Wheel



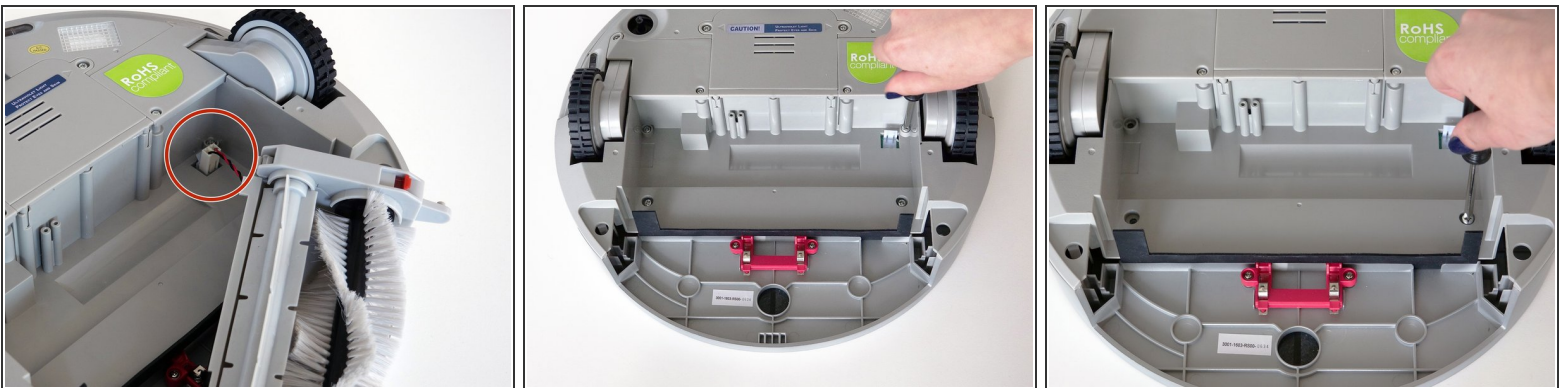
- Grip the front wheel and pull straight up, using the screwdriver for leverage.
 - The wheel will pop out and you will see two screws beneath it.
 - There is a larger screw set deeper in the wheel compartment. Use the screwdriver to remove it.
- ☑ Remember to keep all screws and parts removed from bObi Pet safely aside during the repair. They may be needed for re-assembly.

Step 3 — Remove the Dustbin's Holders



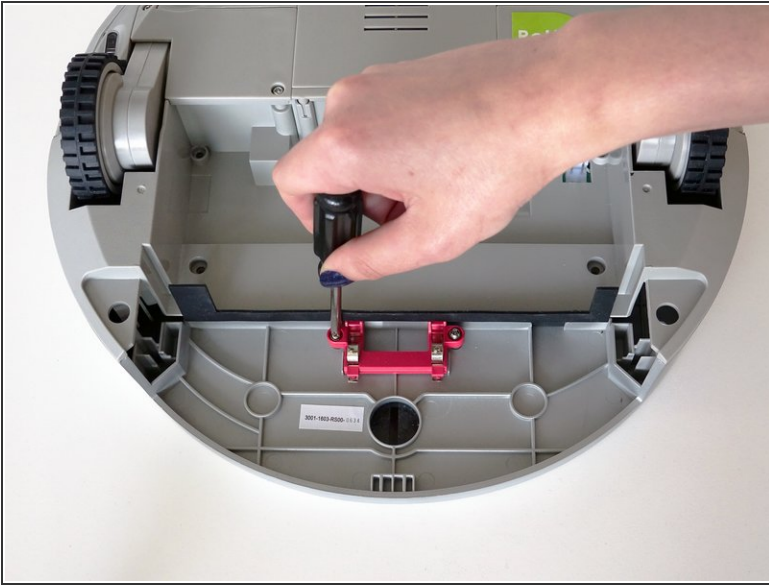
- Remove the screws on both sides of bObi Pet's dustbin. Then, remove the corner pieces that were held down by the screws.
- Grip the brush compartment and pull down to reveal two screws on a red fastener.
- Remove them with the screwdriver.

Step 4 — Remove the Main Brush Attachment



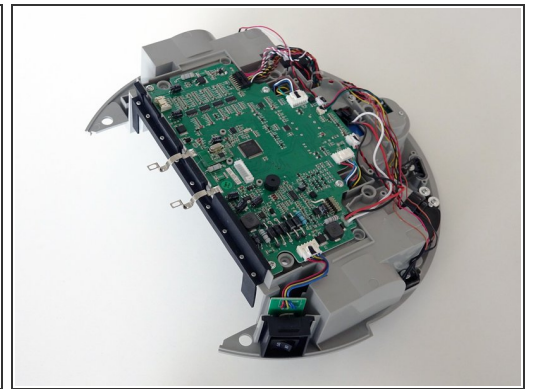
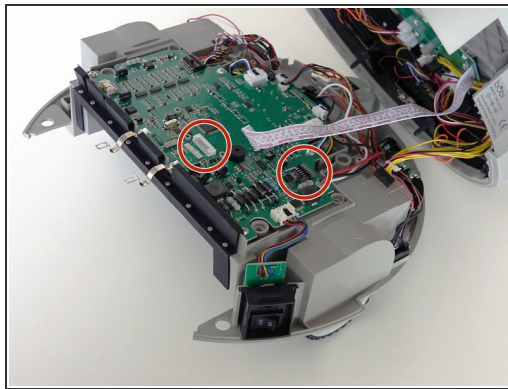
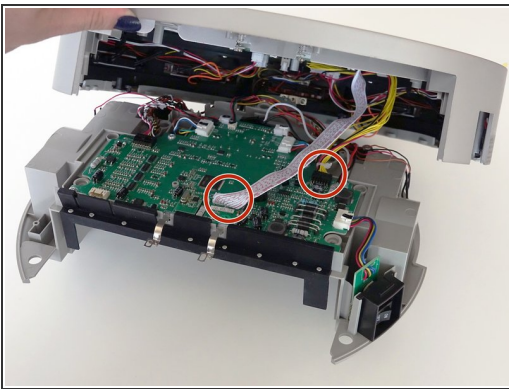
- Pull the brush compartment up until the fastener is freed from bObi Pet. Then, detach the brush compartment's circuit plug and set it aside.
- Remove the 4 screws located beneath the brush compartment.

Step 5 — Remove the Cover Screws



- Remove the 2 screws on the dustbin's red fastener.
- Remove the fastener and set it aside for reassembly.
- The cover is no longer secured, so carefully flip bObi Pet onto her wheels.

Step 6 — Detach the Cover



- Lift the cover to reveal the main board underneath.
- Remove the two circuit plugs connecting the lid to the mainboard.
- bObi Pet's cover is entirely separated, and you may now access any of her internal parts for replacement.

To reassemble bObi Pet, follow these instructions in reverse order after completing an internal repair.