



# Panasonic Lumix DMC-ZS1 Door Replacement

Step by step guide to replacing your digital camera door.

Written By: Sales Cameraparts4you



# INTRODUCTION

Step by step guide to replacing your digital camera door.



## TOOLS:

- [Essential Electronics Toolkit](#) (1)



## PARTS:

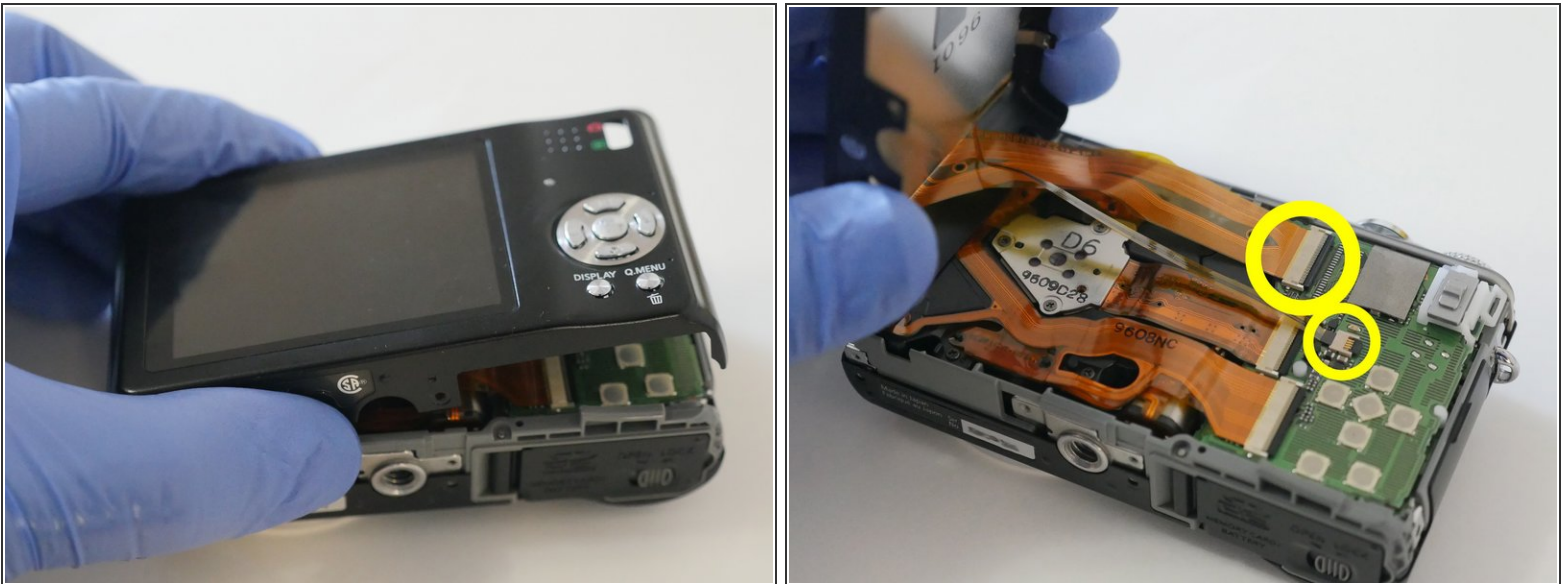
- [DMC-ZS1 LCD Display Part VYK3D81](#)  
(1)

## Step 1 — Exterior Screw removal



- Remove the battery and memory card from the unit
- Remove 6 (0.3mm) screws from the sides of the unit
- Remove 5 (0.3mm) screws from the bottom of the unit

## Step 2



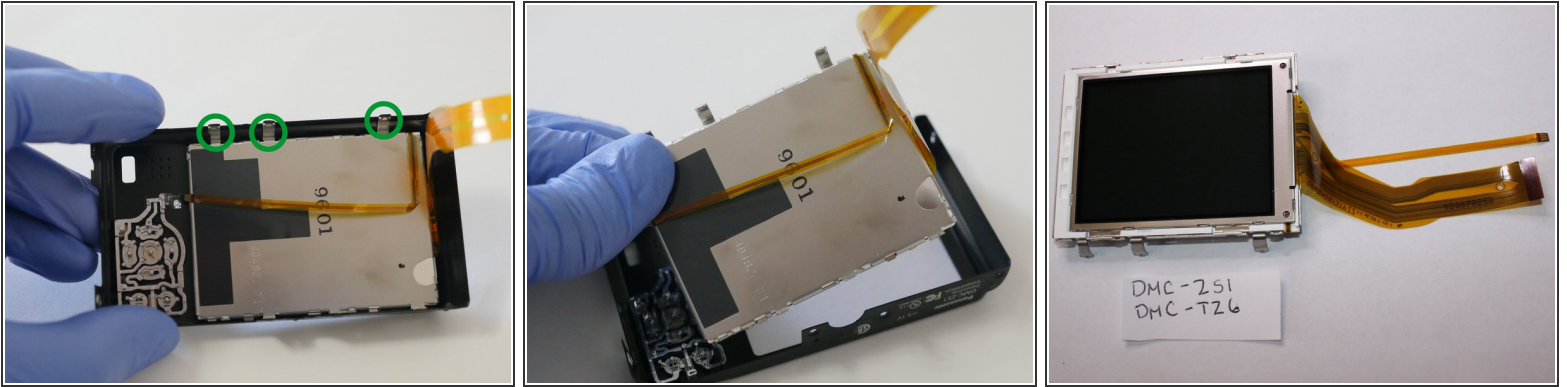
- Lift up slightly the rear cover.

⚠ Do not remove rear cover yet. It is still attached to the Main PCB.

- Flip up the cable clamps using a spudger or other device. Careful not to break the clamps. Release flex cables and remove back cover.

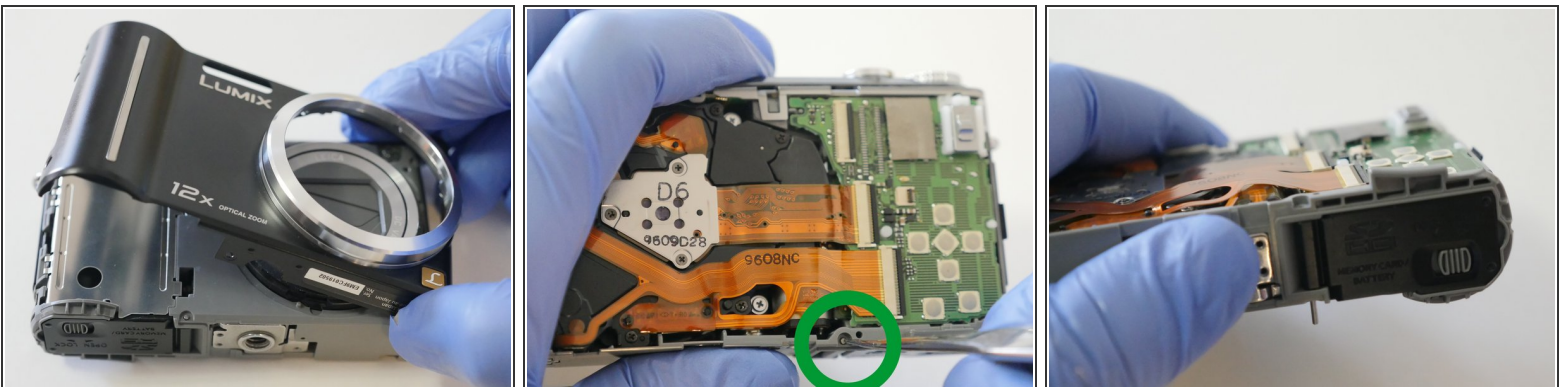


### Step 3



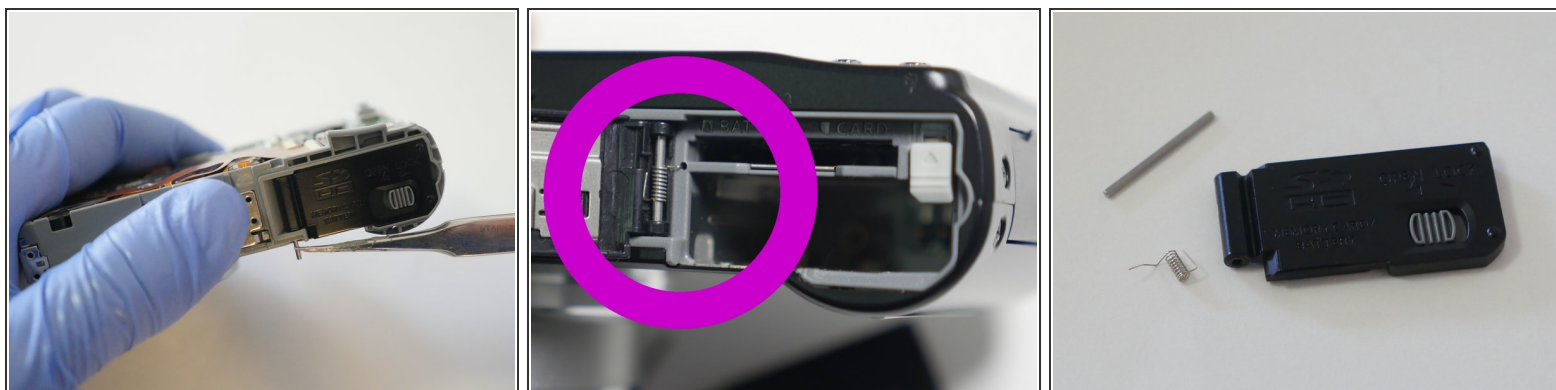
- Release the 3 metal clips from the rear cover and remove the LCD

### Step 4 — Door



- Complete the following review guide: LCD removal
- Remove the front cover
- Use tweezers or a thin object to push door pin thru enough to grab from the other side.
- ⓘ Keep door closed during this procedure so you will not loose the spring.

## Step 5



- ❗ Try to keep the door closed during this procedure.
  - Pull out door pin using needle nose pliers or other tool.
  - Notice spring positioning. This will help you re-install your replacement door
- ❗ If you are having trouble installing, try to keep the spring in place by using a small piece of tape.
  - [Replacement Door](#)

To reassemble your device, follow these instructions in reverse order.