



# bObi Pet Side Brush Motor Replacement

This tutorial will take you through the steps of opening bObi Pet and replacing the side brush motor. Make sure to remove the side brush before starting the repair.

Written By: Chelsea



## INTRODUCTION

The side brush must be removed before you begin opening bObi Pet. Use a Phillips head screwdriver to uninstall, and keep the brush and screw for future use.

Video tutorial also available: <https://www.youtube.com/watch?v=ZNBX-FvP...>



### TOOLS:

- [Phillips #2 Screwdriver](#) (1)



### PARTS:

- [bObi Pet Side Brush Motor](#) (1)

## Step 1 — Turn bObi Pet Off



- Before we get started, turn bObi Pet OFF and flip her over onto a flat surface.
- Next, remove bObi Pet's dustbin. Grip the small tab on the back of the bin, and pull to remove.

## Step 2 — Remove the Front Wheel



- Grip the front wheel and pull straight up, using the screwdriver for leverage.
  - The wheel will pop out and you will see two screws beneath it.
  - There is a larger screw set deeper in the wheel compartment. Use the screwdriver to remove it.
- ☑ Remember to keep all screws and parts removed from bObi Pet safely aside during the repair. They may be needed for re-assembly.

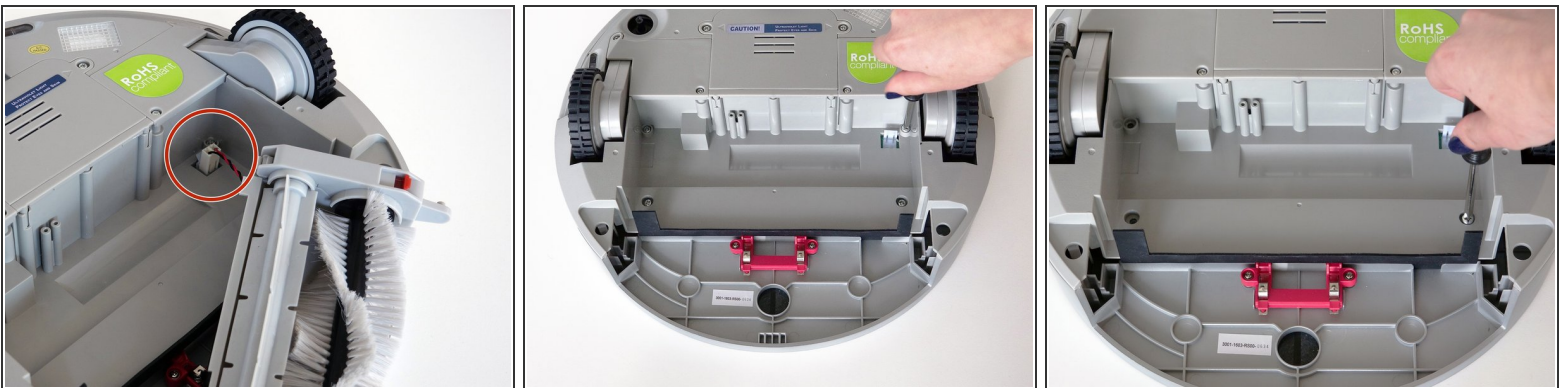


### Step 3 — Remove the Dustbin's Holders



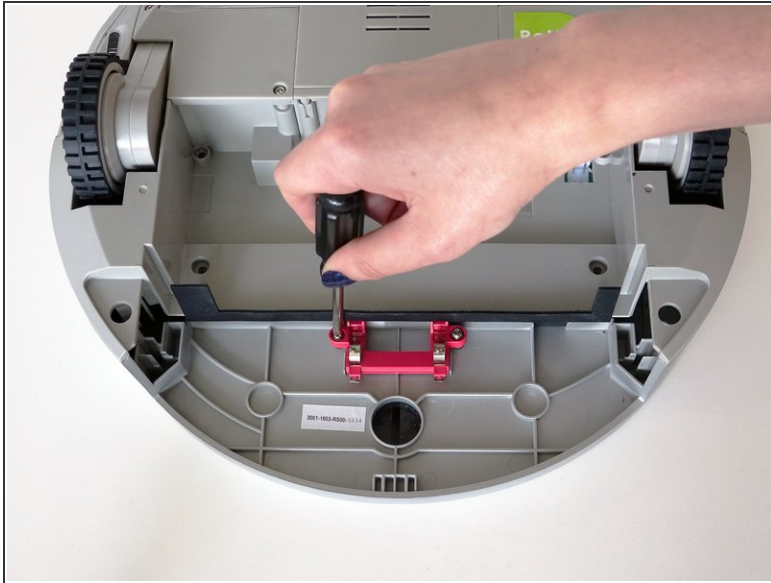
- Remove the screws on both sides of bObi Pet's dustbin. Then, remove the corner pieces that were held down by the screws.
- Grip the brush compartment and pull down to reveal two screws on a red fastener.
- Remove them with the screwdriver.

### Step 4 — Remove the Main Brush Attachment



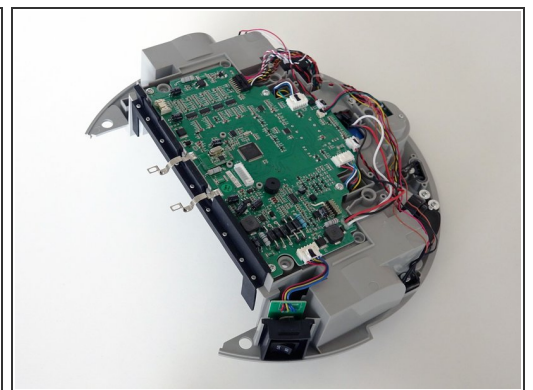
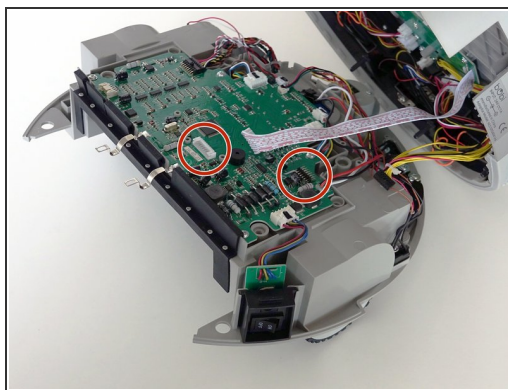
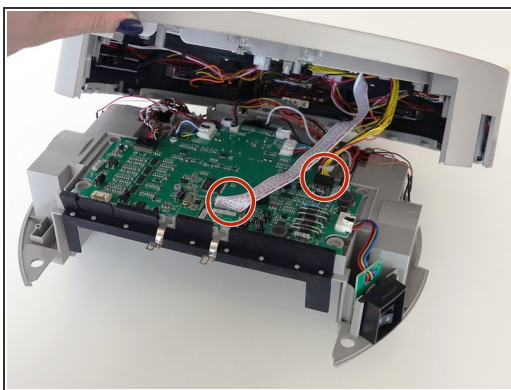
- Pull the brush compartment up until the fastener is freed from bObi Pet. Then, detach the brush compartment's circuit plug and set it aside.
- Remove the 4 screws located beneath the brush compartment.

## Step 5 — Remove the Cover Screws



- Remove the 2 screws on the dustbin's red fastener.
- Remove the fastener and set it aside for reassembly.
- The cover is no longer secured, so carefully flip bObi Pet onto her wheels.

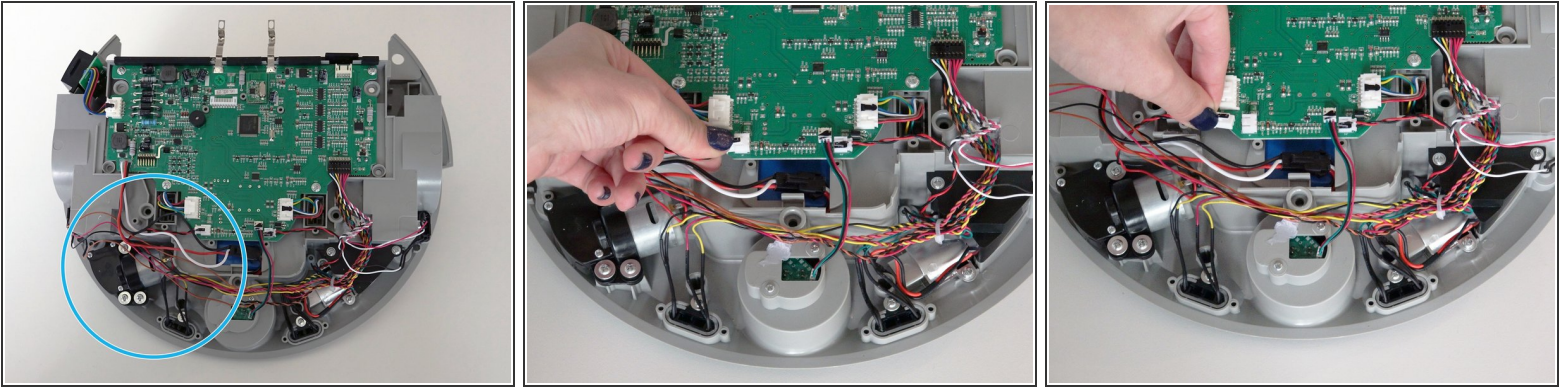
## Step 6 — Detach the Cover



- Lift the cover to reveal the main board underneath.
- Remove the two circuit plugs connecting the lid to the mainboard.
- bObi Pet's cover is entirely separated, and you may now access any of her internal parts for replacement.

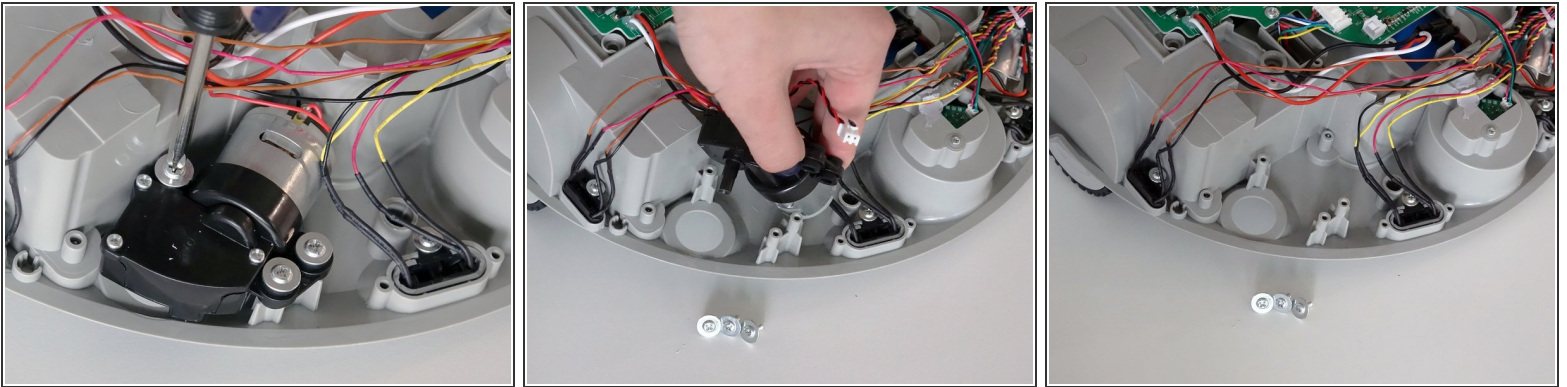


## Step 7 — Unplug the Side Brush Motor



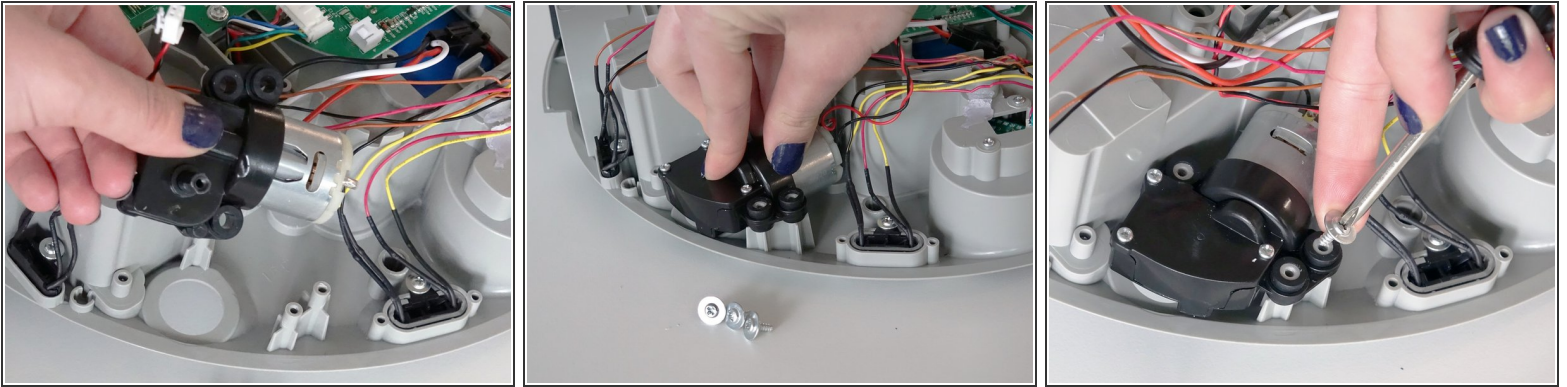
- The side brush motor is attached to the right side of the mainboard by one red and black twisted wire.
  - Press the small white tab and pull to unplug it from the mainboard.
- ☒ If there is glue holding the wire onto bObi Pet, you may scrape it off using your screwdriver.

## Step 8 — Remove bObi Pet's Side Brush Motor



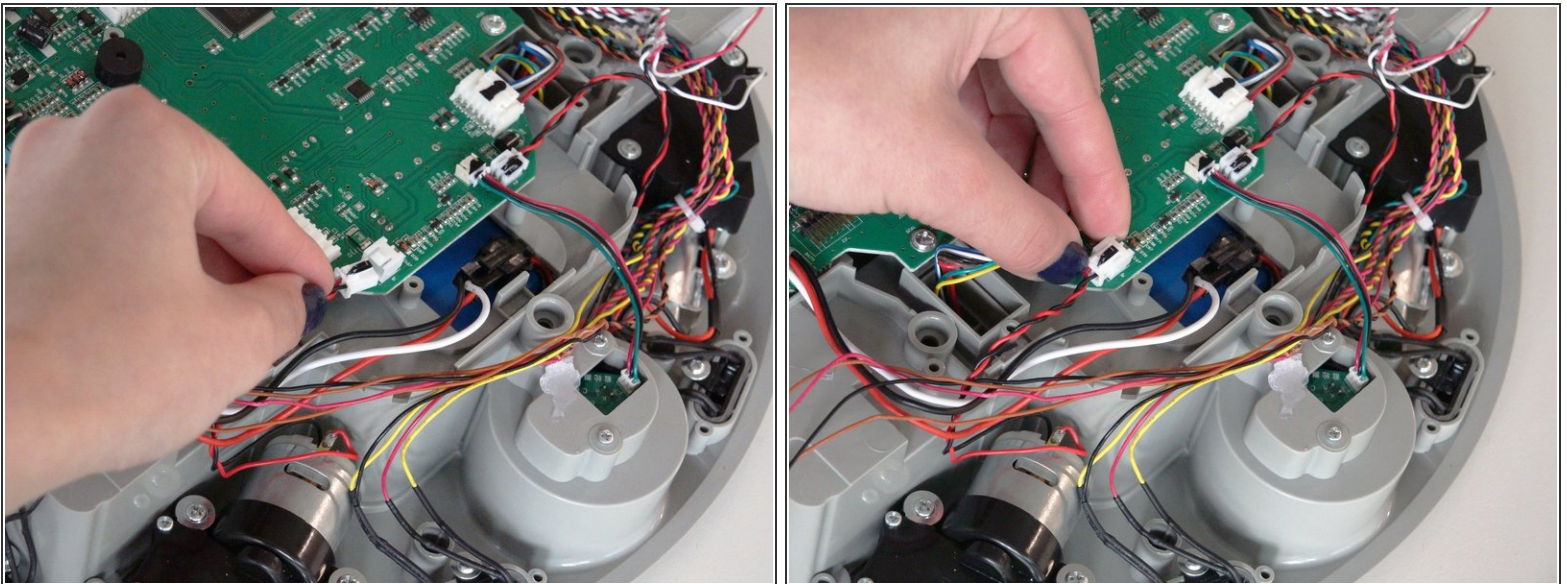
- Next remove the 3 screws holding the side brush motor onto bObi Pet.
- Then lift the motor straight up to remove.

## Step 9



- Line up the replacement motor with the screw posts and push it down so it lies flat.
- Next, reinstall the 3 screws.

## Step 10 — Plug in the New Motor



- Lastly, attach the circuit plug to the mainboard and you'll be ready to close the cover.
  - See bObi Pet's re-assembly guide to complete this repair: [Assemble bObi Pet Post-Repair](#)
- ☒ After re-assembling bObi Pet, remember to re-attach the side brush on the newly installed motor.

To reassemble bObi Pet, follow this guide:

[Assemble bObi Pet Post-Repair](#)