



bObi Pet Screen Replacement

A screen replacement on bObi Pet is one of the easiest repairs to do yourself. You just need a Phillips head screwdriver to open bObi Pet and complete this replacement.

Written By: Chelsea



INTRODUCTION

Follow these steps for a quick screen replacement on bObi Pet, or see this video guide:

<https://www.youtube.com/watch?v=EY-MMWtO...>



TOOLS:

- [Phillips #2 Screwdriver](#) (1)



PARTS:

- [bObi Pet Screen](#) (1)

Step 1 — Turn bObi Pet Off



- Before we get started, turn bObi Pet OFF and flip her over onto a flat surface.
- Next, remove bObi Pet's dustbin. Grip the small tab on the back of the bin, and pull to remove.

Step 2 — Remove the Front Wheel



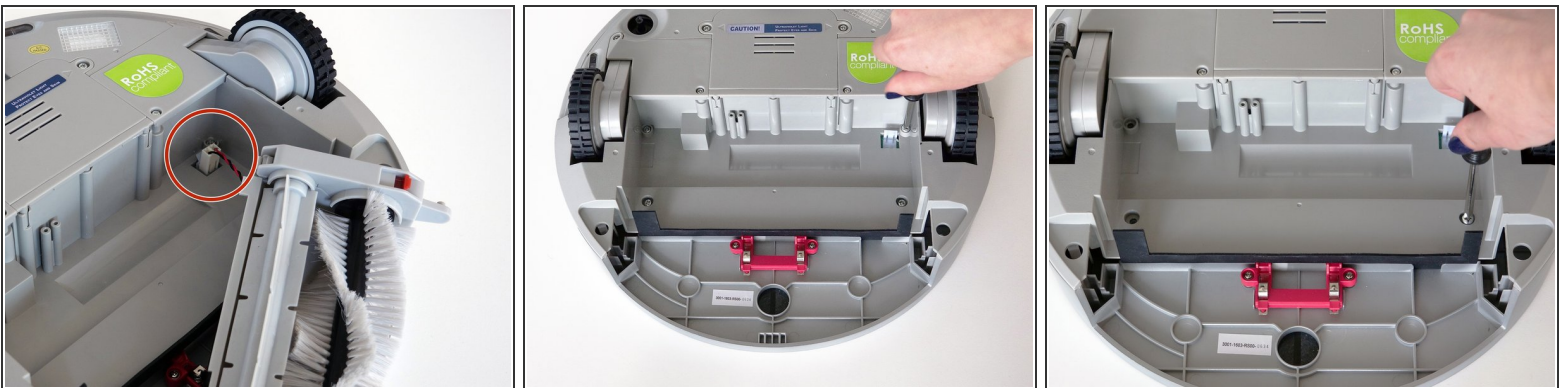
- Grip the front wheel and pull straight up, using the screwdriver for leverage.
 - The wheel will pop out and you will see two screws beneath it.
 - There is a larger screw set deeper in the wheel compartment. Use the screwdriver to remove it.
- ☒ Remember to keep all screws and parts removed from bObi Pet safely aside during the repair. They may be needed for re-assembly.

Step 3 — Remove the Dustbin's Holders



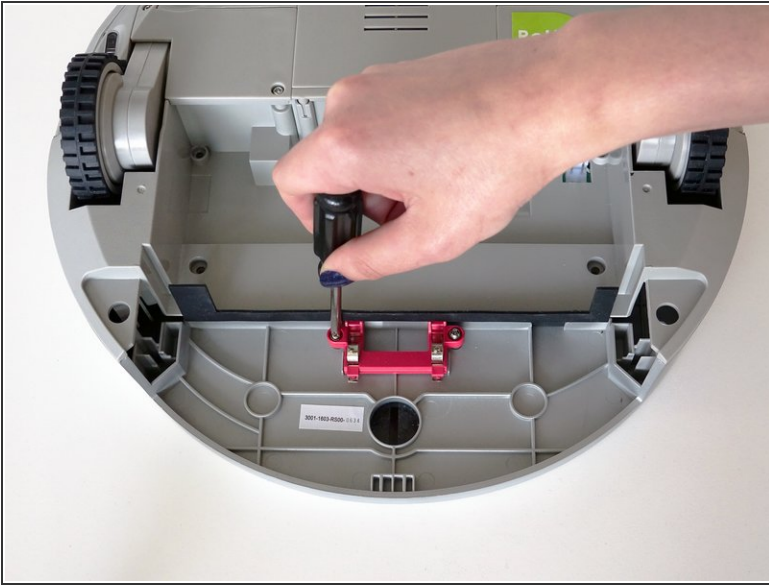
- Remove the screws on both sides of bObi Pet's dustbin. Then, remove the corner pieces that were held down by the screws.
- Grip the brush compartment and pull down to reveal two screws on a red fastener.
- Remove them with the screwdriver.

Step 4 — Remove the Main Brush Attachment



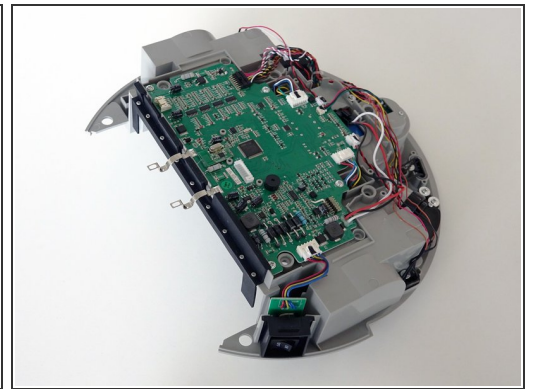
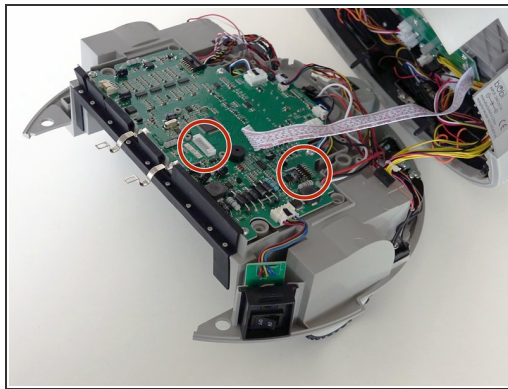
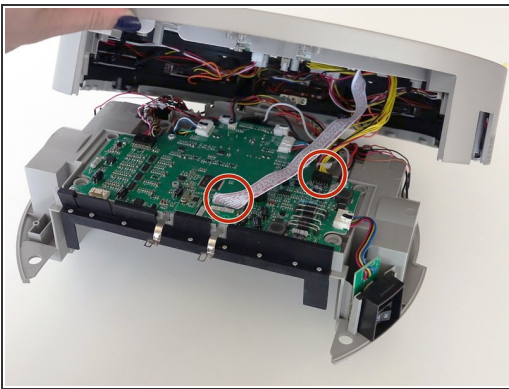
- Pull the brush compartment up until the fastener is freed from bObi Pet. Then, detach the brush compartment's circuit plug and set it aside.
- Remove the 4 screws located beneath the brush compartment.

Step 5 — Remove the Cover Screws



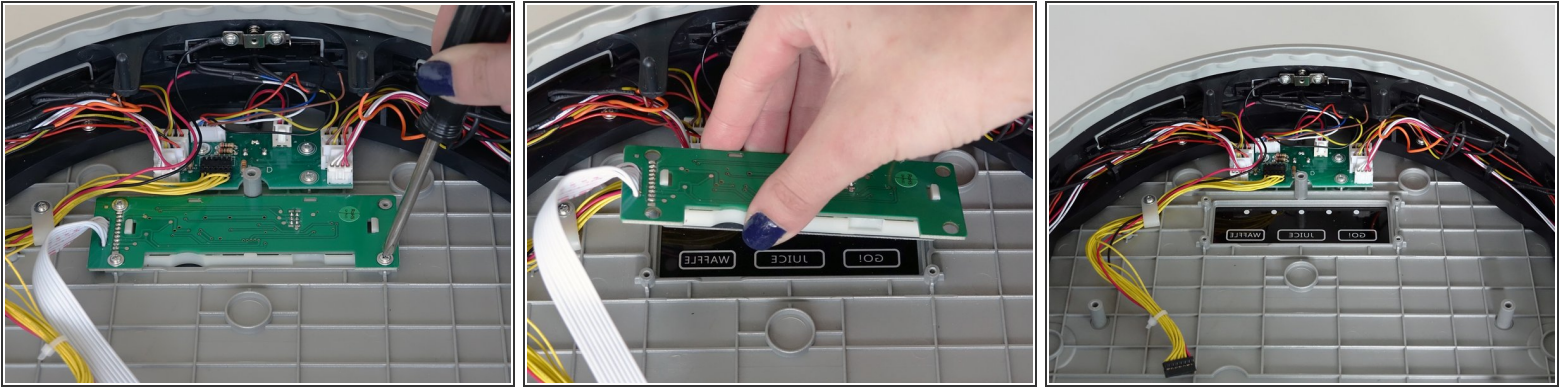
- Remove the 2 screws on the dustbin's red fastener.
- Remove the fastener and set it aside for reassembly.
- The cover is no longer secured, so carefully flip bObi Pet onto her wheels.

Step 6 — Detach the Cover



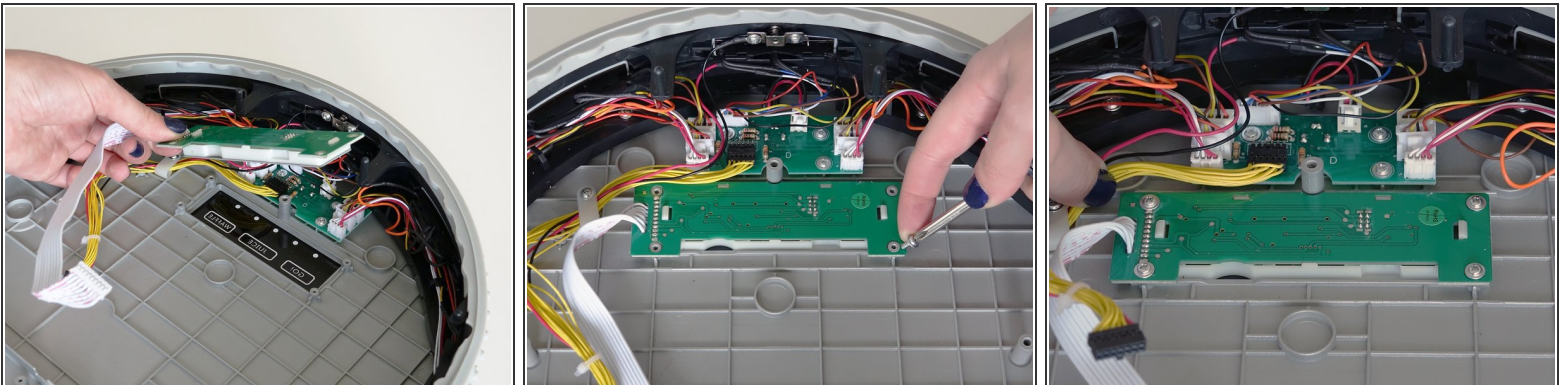
- Lift the cover to reveal the main board underneath.
- Remove the two circuit plugs connecting the lid to the mainboard.
- bObi Pet's cover is entirely separated, and you may now access any of her internal parts for replacement.

Step 7 — Remove the Screen



- Remove the four screws holding bObi Pet's screen.
- Then, lift it straight up and out to make space for the replacement.

Step 8 — Place the New Screen



- Lay the new screen in the open space on bObi Pet's lid.
- Align the screw holes on the screen with the screw posts in bObi Pet and push down until it lies flat.
- Install all four screws, and you'll be ready to close bObi Pet. See the following instructions: [Assemble bObi Pet Post-Repair](#)

To reassemble bObi Pet, see this tutorial: [Assemble bObi Pet Post-Repair](#)