



Install the Battery on bObi Pet

Before bObi Pet can power up, you will need to install her battery. To do this, you will need a Phillips head screwdriver and a new battery, both of which are included inside bObi Pet's box.

Written By: Chelsea



INTRODUCTION

Follow these few steps to easily set up your new bObi Pet's battery or install a new one.

For a video tutorial, go to: <https://www.youtube.com/watch?v=qpfeK7GP...>



TOOLS:

- [Phillips #2 Screwdriver](#) (1)



PARTS:

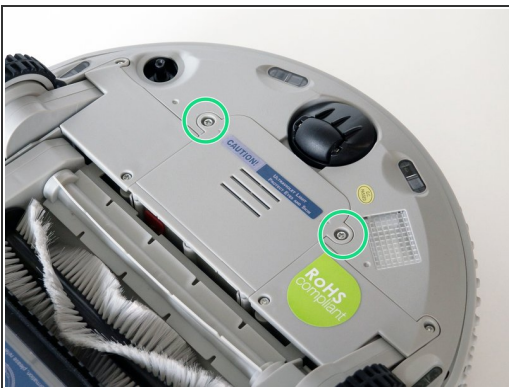
- [1 bObi Pet battery](#) (1)

Step 1 — Turn bObi Pet Off



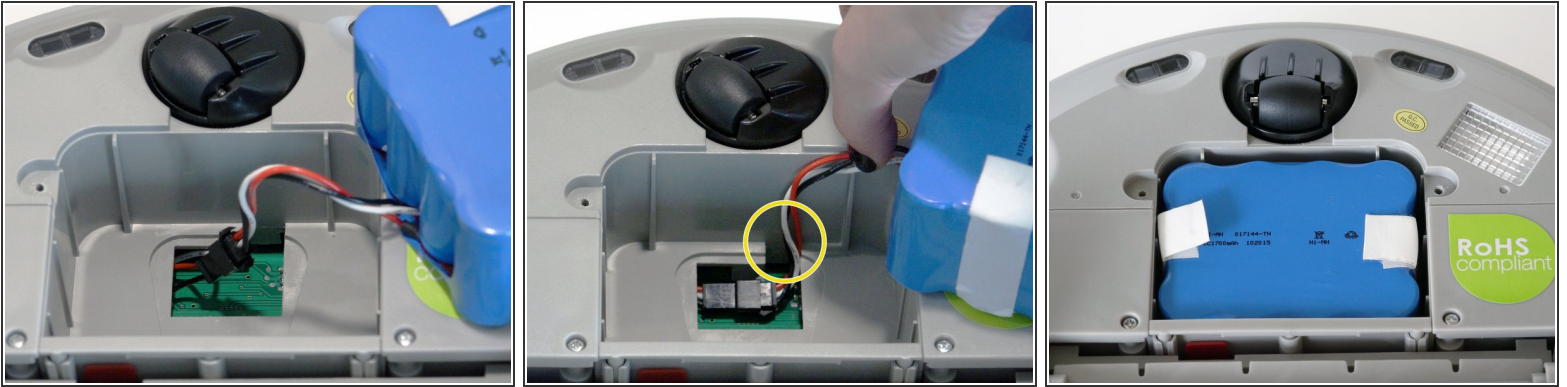
- Make sure bObi Pet's power switch is turned OFF.
- Then, flip bObi Pet over onto a flat surface, so the wheels point up.

Step 2 — Open the Battery Compartment



- Remove the two screws holding her battery cover in place.
- Remove the battery cover. Keep the cover and screws close by for the next step.

Step 3 — Plug in the New Battery



- Plug the new battery in at the circuit junction.
- Tuck the wire into the side of the compartment.
- Ensure the wires are not in the way, then, slide the battery straight down.

Step 4 — Replace the Battery Cover



- Replace the battery cover so that it lies flat.
- Reinstall the 2 screws to finish the installation process.

After finishing the battery installation correctly, turn bObi Pet's side power switch to ON and your robotic vacuum should be ready to work.