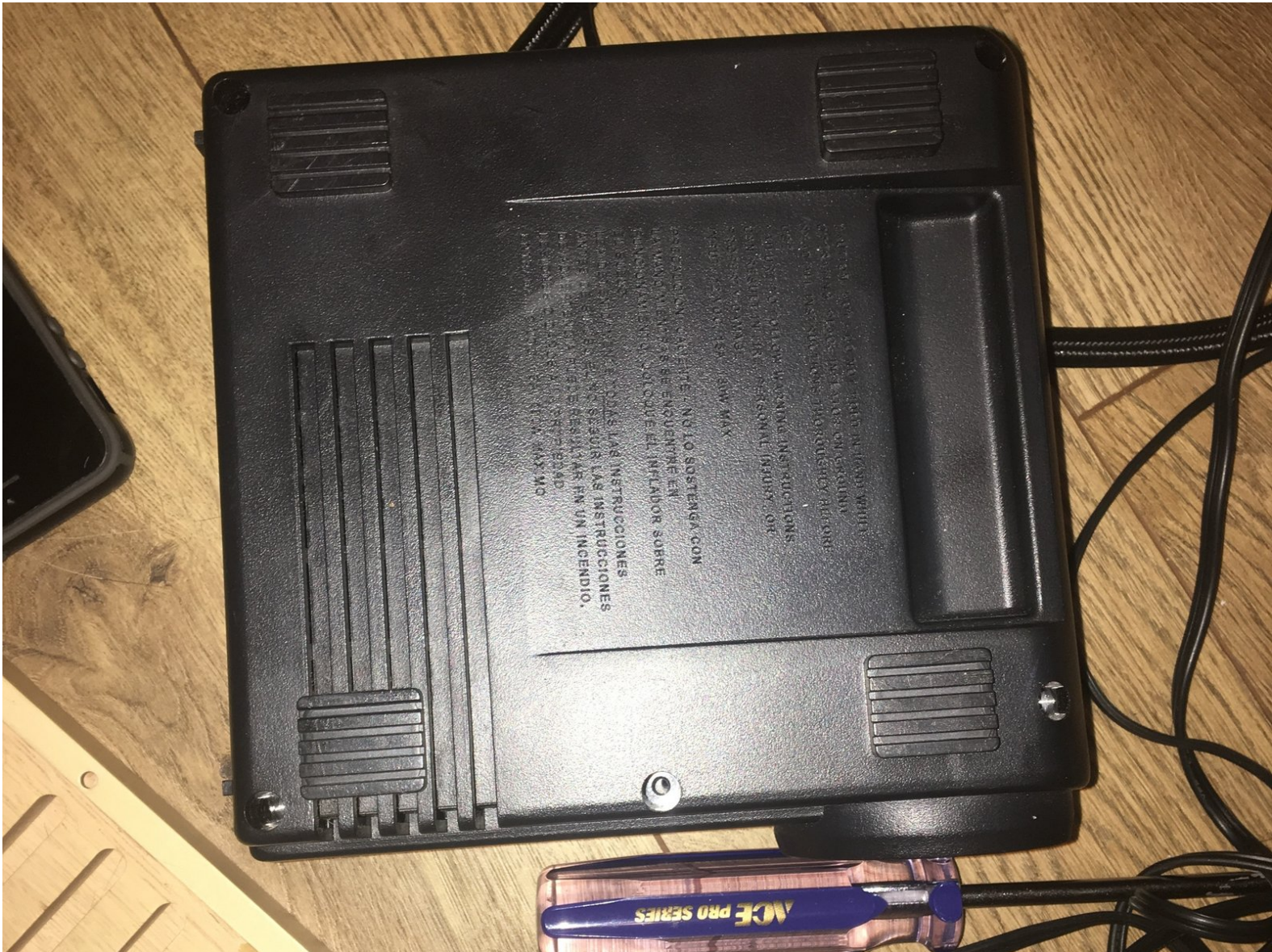




Slime Portable Air Compressor Motor Replacement

This guide will teach you how to replace in your Slime Portable Air Compressor.

Written By: Taylor Bratsch



INTRODUCTION

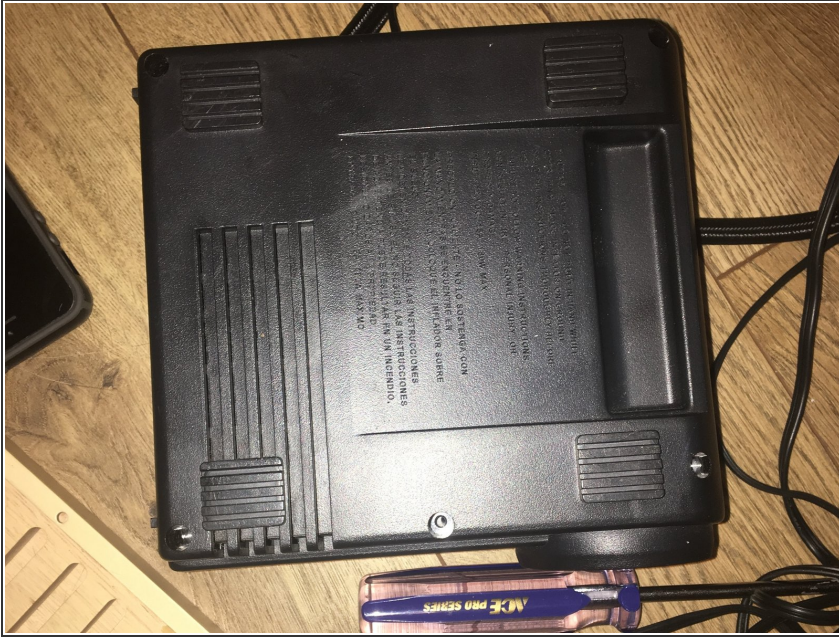
This guide will teach you how to replace in your Slime Portable Air Compressor.



TOOLS:

- [Phillips #2 Screwdriver](#) (1)
-

Step 1 — Getting Started



- Unscrew the back cover.

Step 2 — Remove the Cover



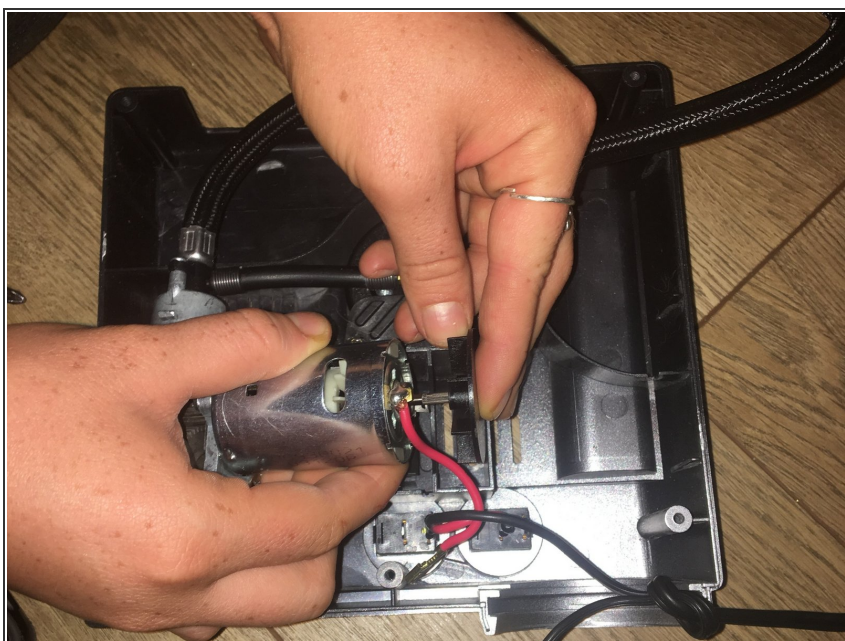
- Remove the back cover.

Step 3 — Remove the Light



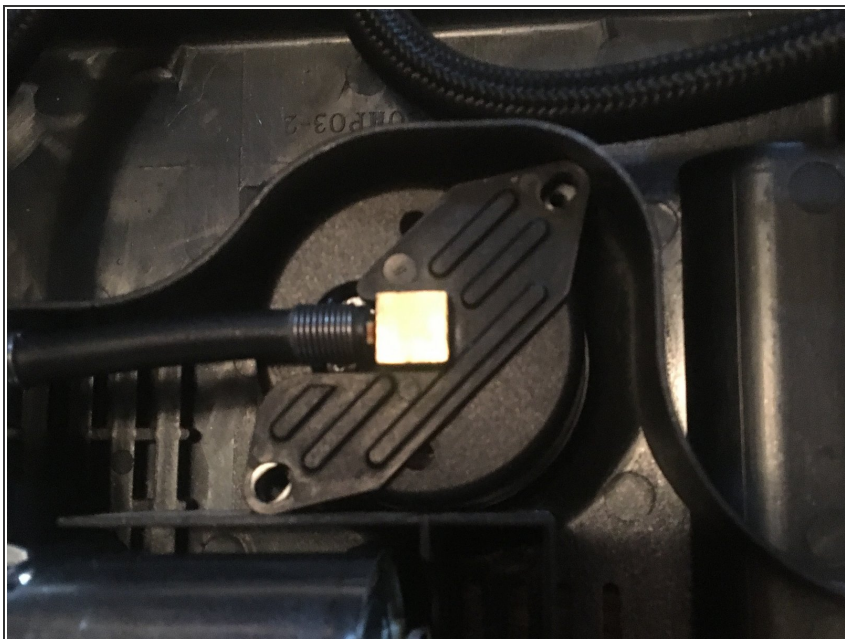
- Remove the **light fixture** from the slot in the front.
- ⚠ Be careful when removing the circuit board from the base so the wires don't break.

Step 4 — Remove the Motor Cover



- Pull the black end cover on the motor off and set aside.

Step 5 — Remove the Gauge Cover



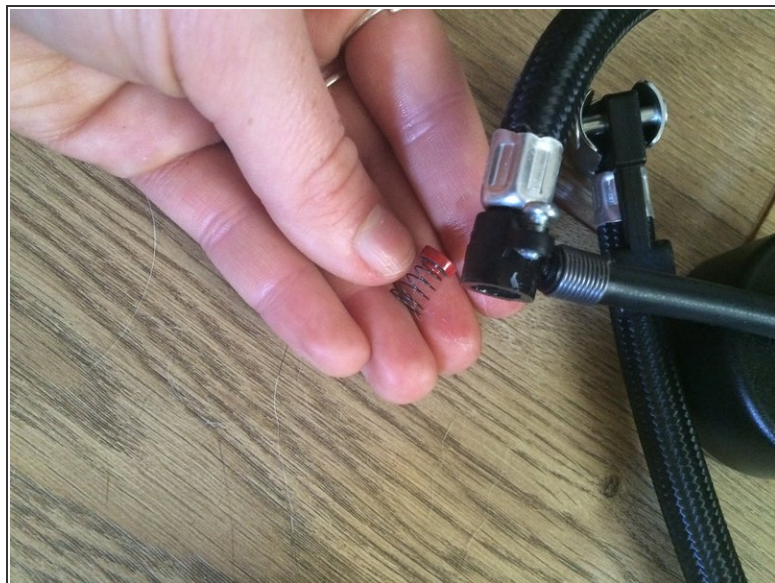
- Unscrew the gauge back cover and remove.
- ⓘ Set the screws and the cover aside.

Step 6 — Remove Gauge



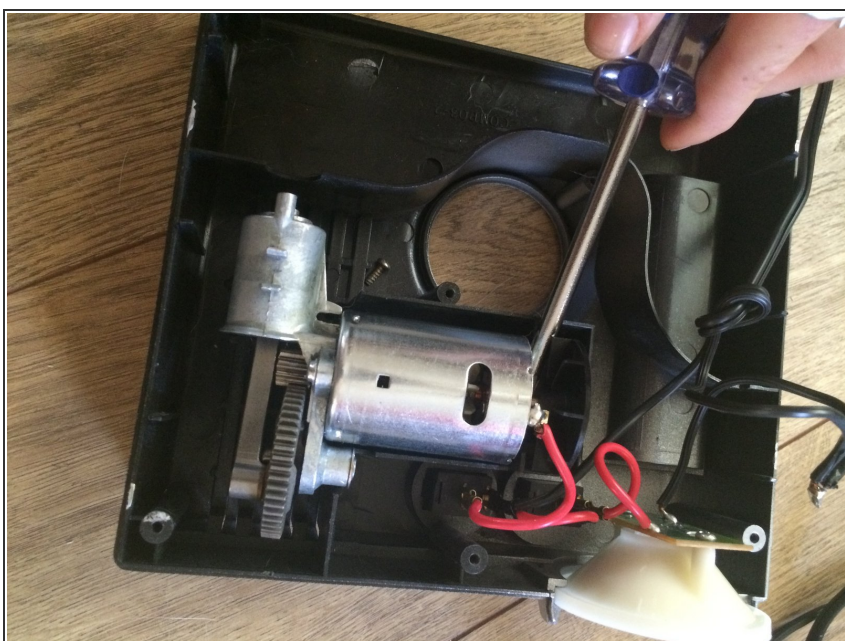
- Remove the pressure gauge.

Step 7 — Remove the Hose



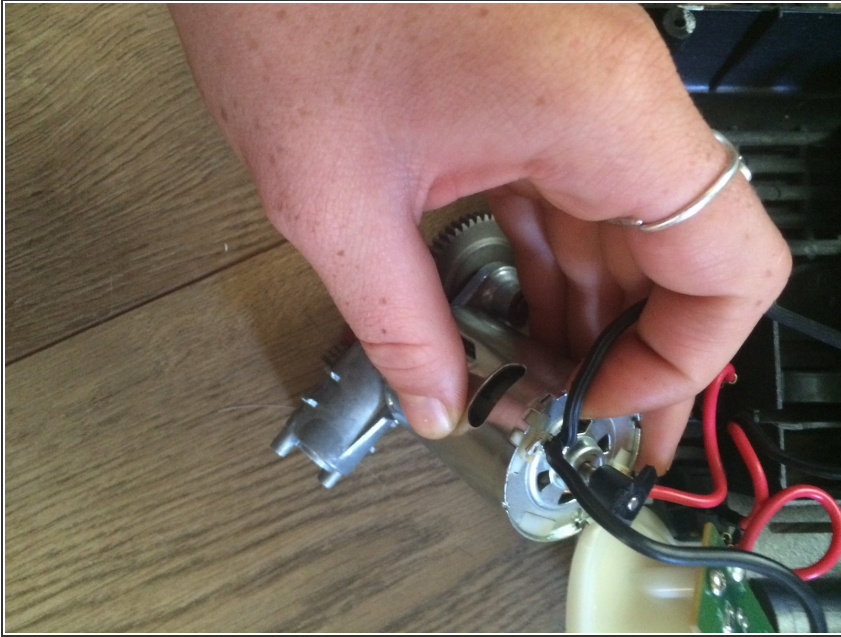
- Remove the hose by unscrewing it from the motor.
 - Set the pressure gauge and hose aside,
- ⚠ Take care when removing the hose to hold on to the spring inside.

Step 8 — Remove the Motor



- Pry the motor up from the base.

Step 9 — Unplug the Motor



- Unplug the black cord connected to the top of the motor.
- Remove the motor.

Step 10 — Replace



- Replace the motor.

Step 11 — Reassemble



- Reassemble the air compressor and continue use.

To reassemble your device, follow these instructions in reverse order.