



# BLU Studio 7.0 II SIM Card Replacement

Replace the SIM card of your BLU Studio 7.0 II.

Written By: Julie Jaskowiak



---

# INTRODUCTION

This guide will show you how to replace a SIM Card in the BLU Studio 7.0 II.



## TOOLS:

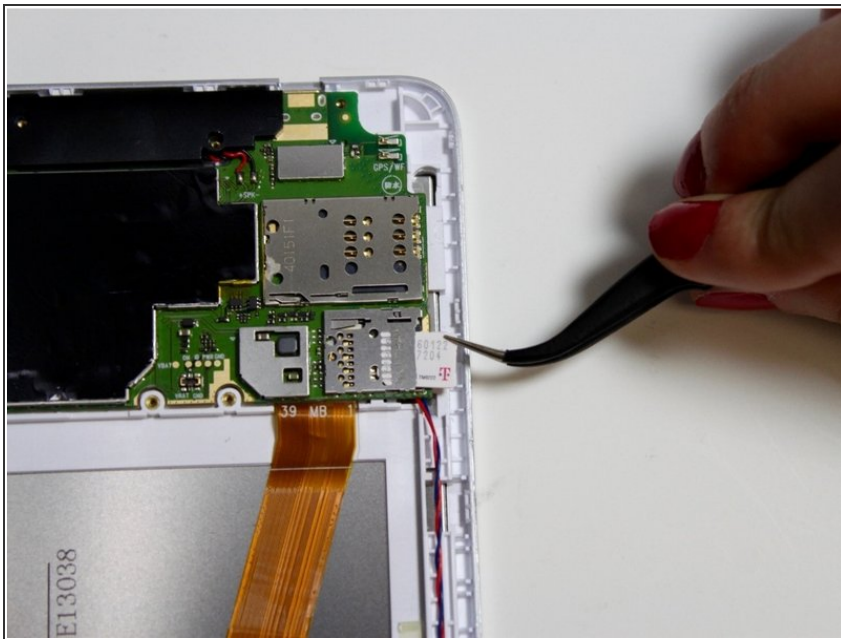
- [Precision Tweezers Set](#) (1)
  - [Phillips #0 Screwdriver](#) (1)
-

## Step 1 — SIM Card



- Remove the screw from the small panel on the back of the phone.
- Remove the panel by sliding it straight out from the side of the phone.

## Step 2



- ⓘ You should be able to remove the SIM card without removing the back cover. The cover has been removed to more clearly show the SIM card.
- To remove a stuck SIM card, use the precision tweezers to firmly grasp the card and slowly pull it from the slot.

To reassemble your device, follow these instructions in reverse order.