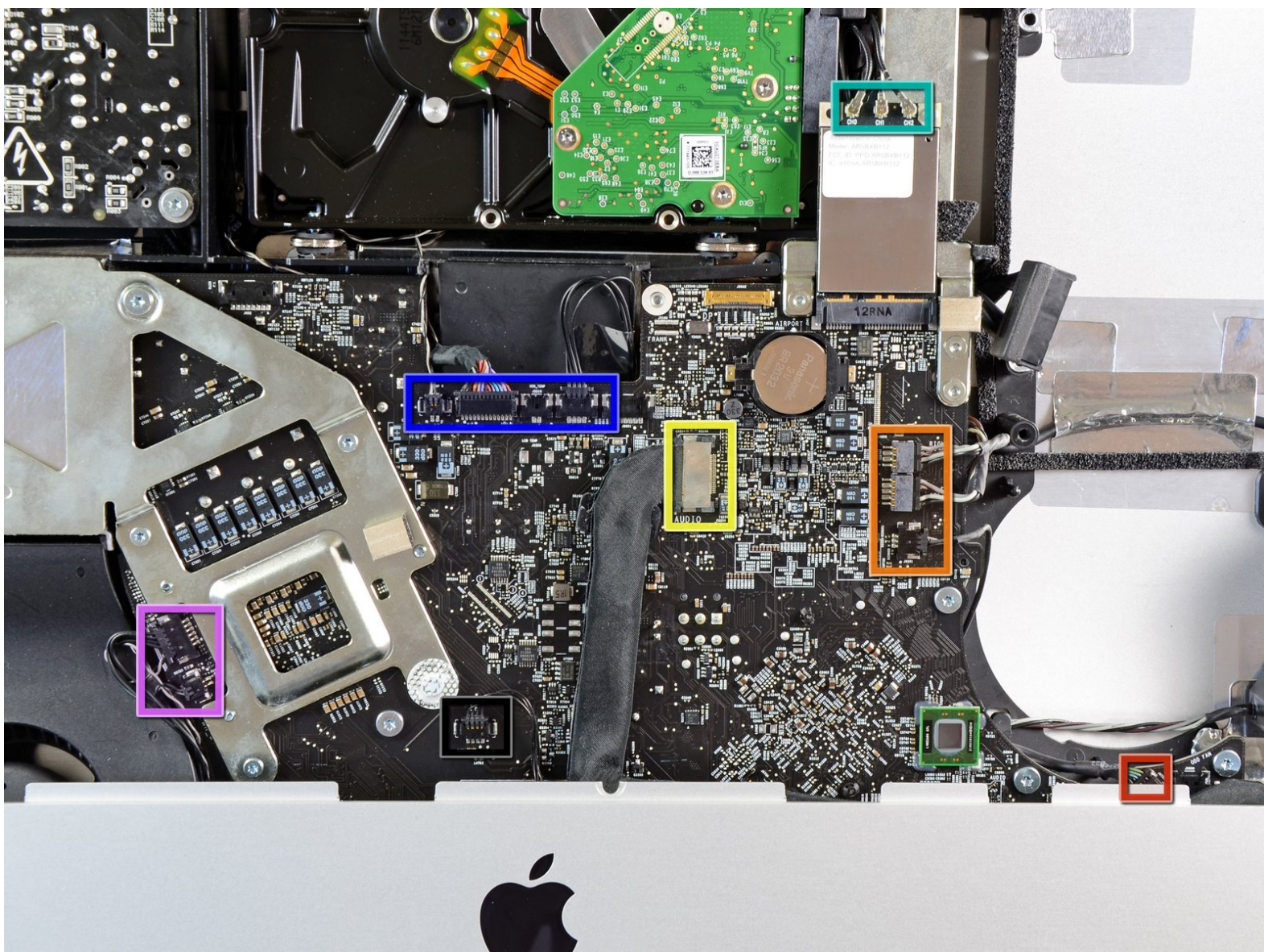




iMac Intel 21.5" EMC 2428 Logic Board Replacement

Internal Prerequisite. Pulling out logic board to access SSD power and data connectors.

Written By: Andrew Bookholt



INTRODUCTION

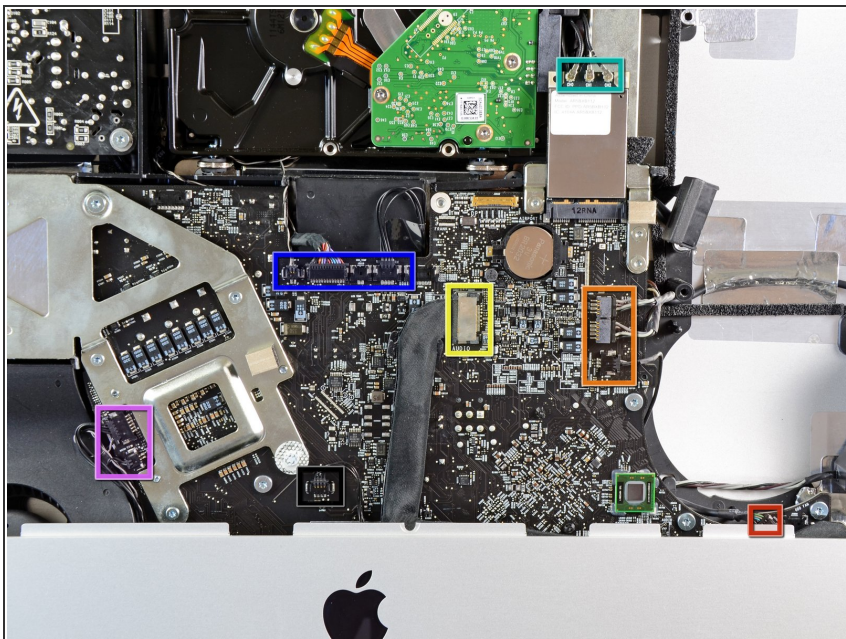
Internal Prerequisite. Pulling out logic board to access SSD power and data connectors.



TOOLS:

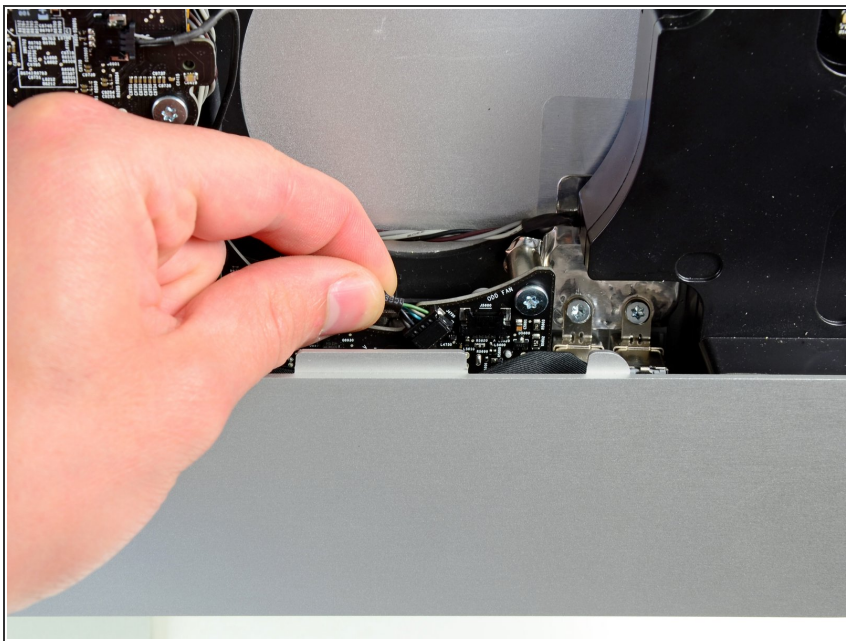
- [T10 Torx Screwdriver](#) (1)
 - [Spudger](#) (1)
-

Step 1 — Logic Board



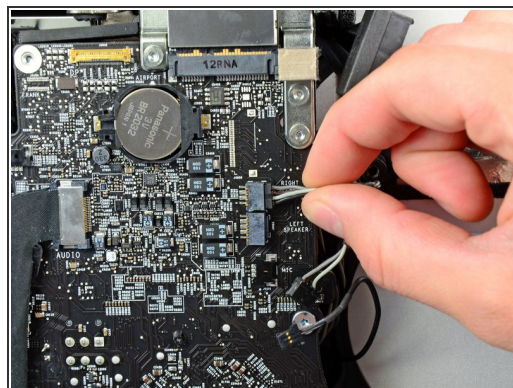
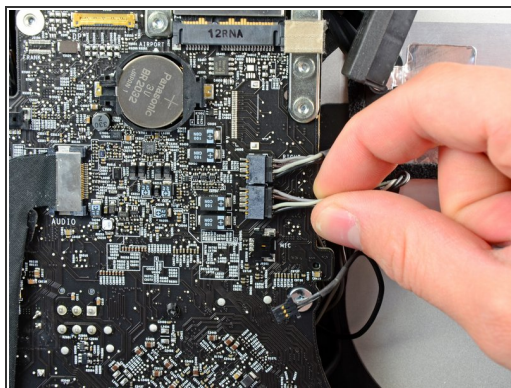
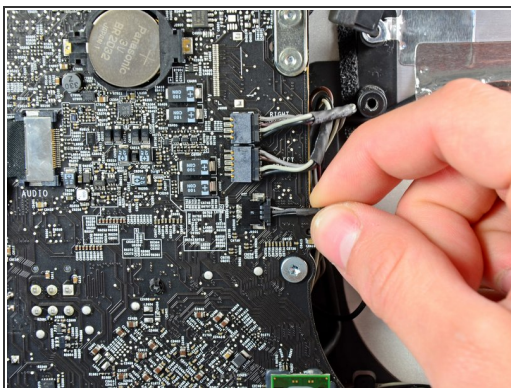
- In the proceeding steps, you will disconnect the following cables:
 - SD Board
 - Left/Right Speaker and Microphone
 - Audio Port
 - Wi-Fi Antenna
 - Right Temperature Sensor, Bluetooth/Ambient Light Sensor/Camera/Left Temperature, and Hard Drive Fan
 - CPU Fan/Ambient Temperature and Power Button
- IR Sensor

Step 2



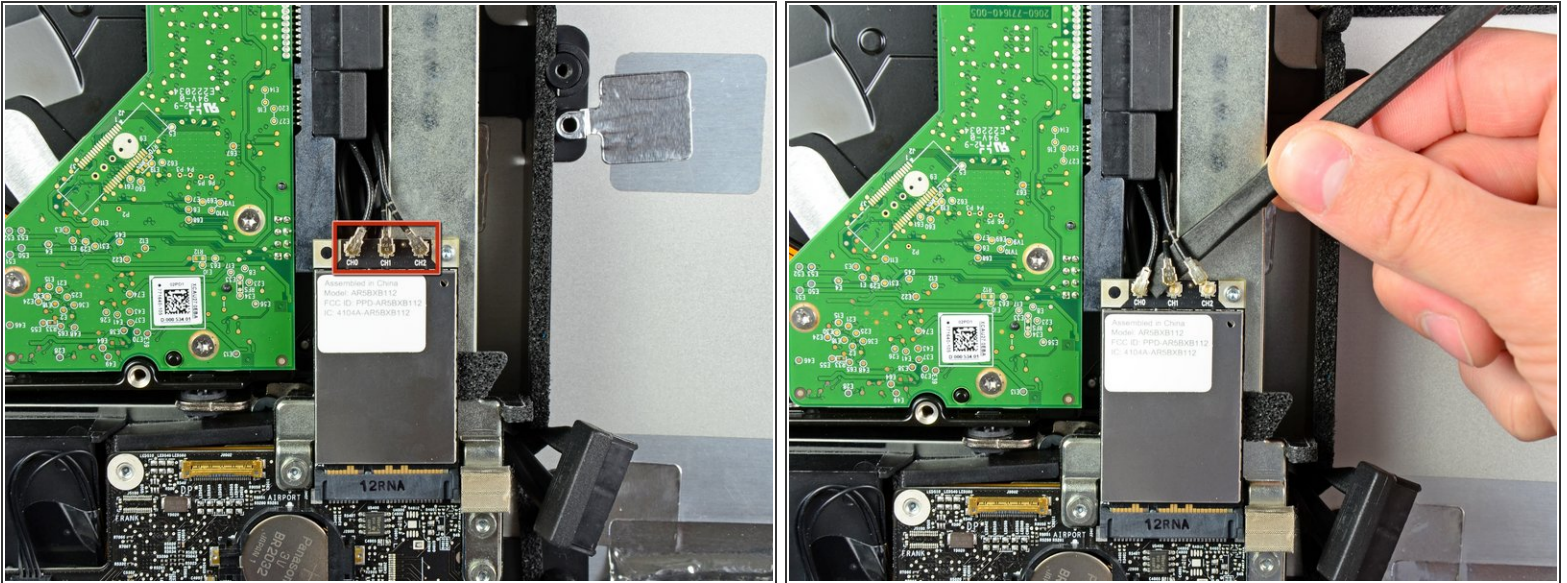
- Pull the SD board cable out of its socket on the logic board.

Step 3



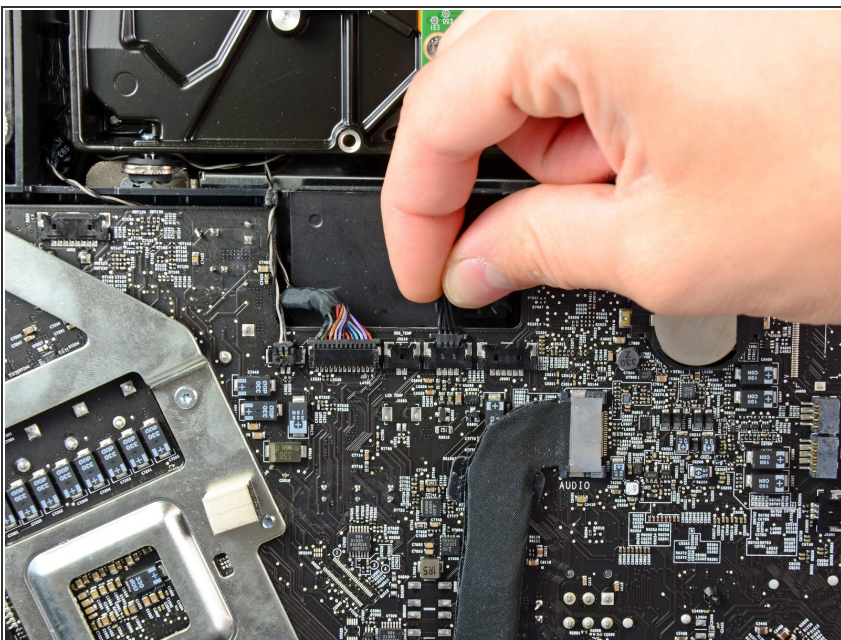
- Disconnect the microphone, left speaker, and right speaker cables by pulling their connectors toward the right side of the iMac.

Step 4



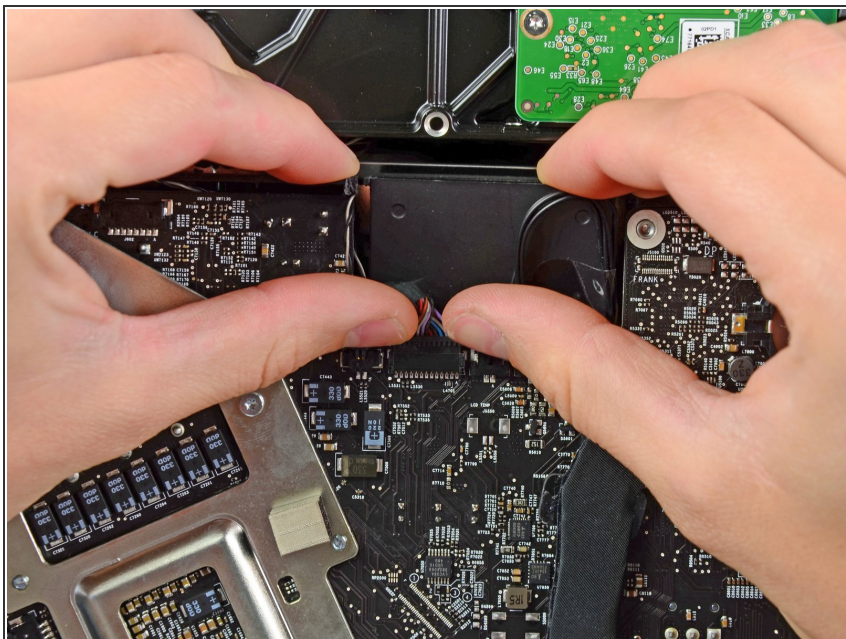
- Use the flat end of a spudger to pry all three AirPort antenna connectors up from their sockets on the AirPort board.
- ☑ During reinstallation, connect the cable with no stripes to the socket marked CH0, the cable with one stripe to CH1, and the cable with two stripes to CH2.

Step 5



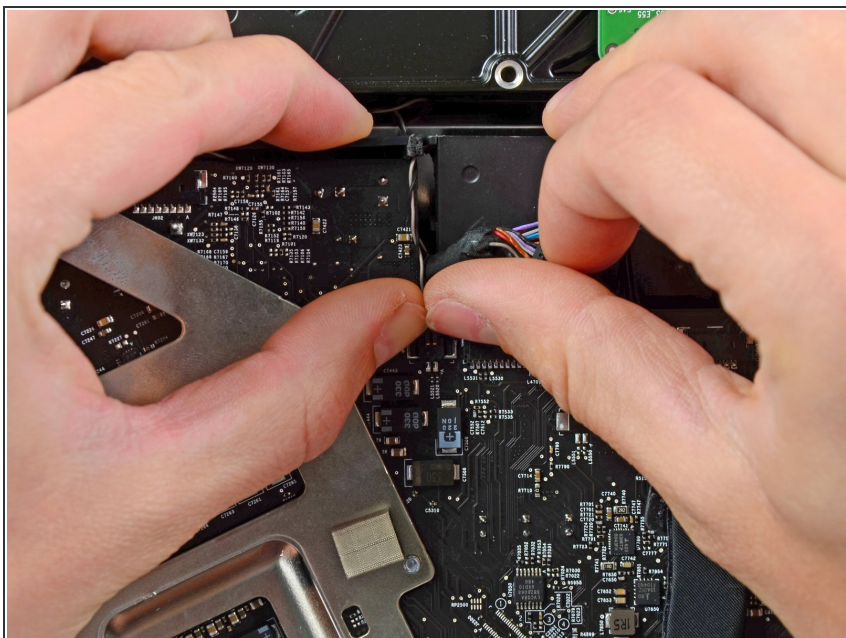
- Pull the hard drive fan connector toward the top edge of the iMac to disconnect it from its socket on the logic board.

Step 6



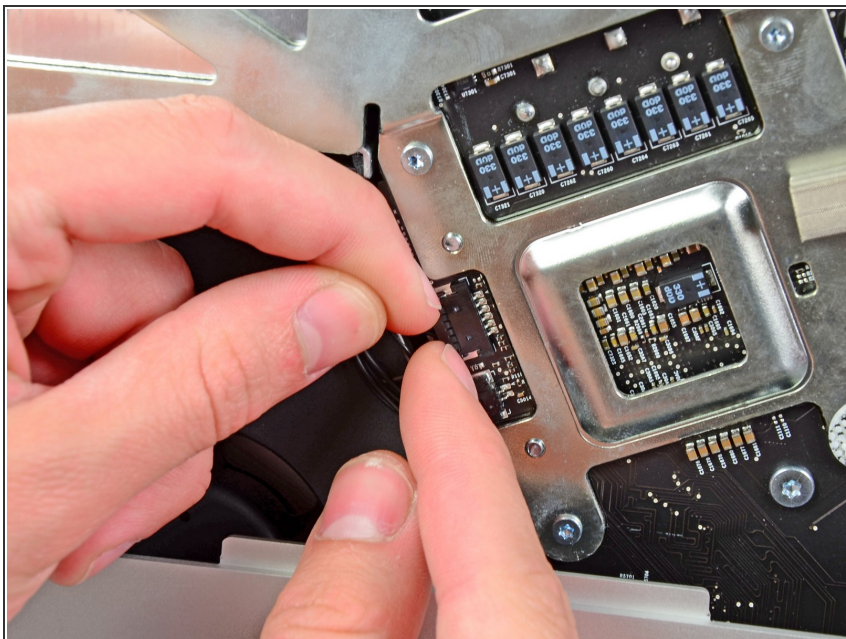
- Use your thumbnails on both sides of the Bluetooth/ambient light sensor/camera/left temperature connector to push it toward the top edge of the iMac and out of its socket on the logic board.

Step 7



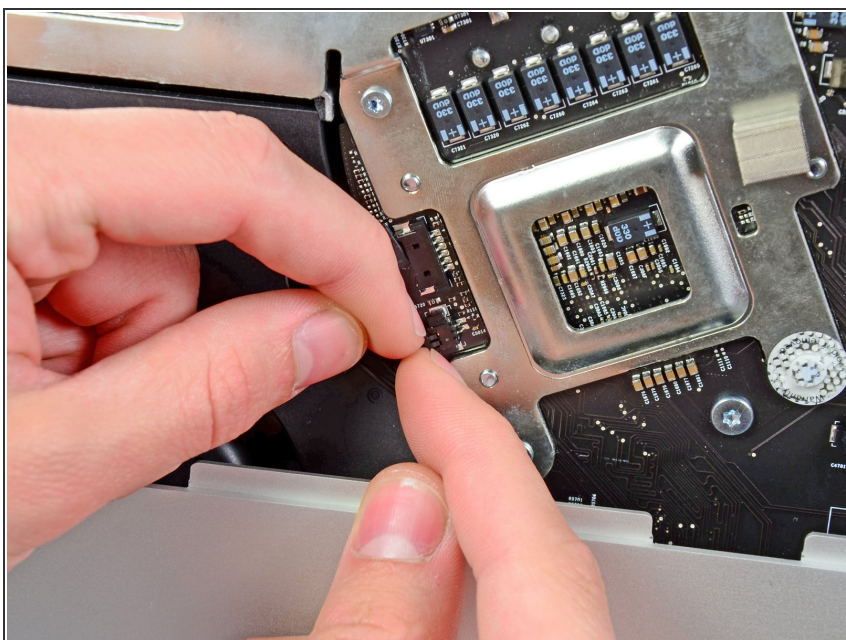
- Use your thumbnails to push the right temperature sensor connector toward the top edge of the iMac and out of its socket.

Step 8



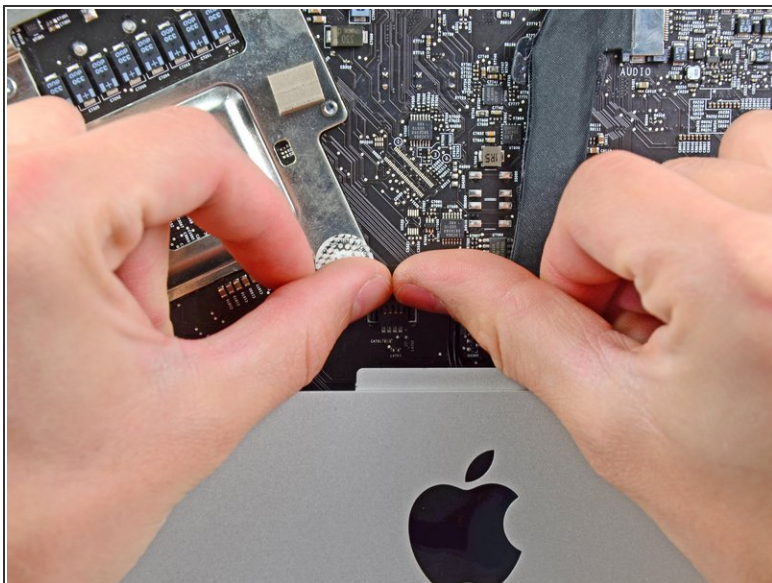
- Pull the CPU fan/ambient temperature sensor connector toward the bottom left edge of the iMac and out of its socket on the logic board.

Step 9



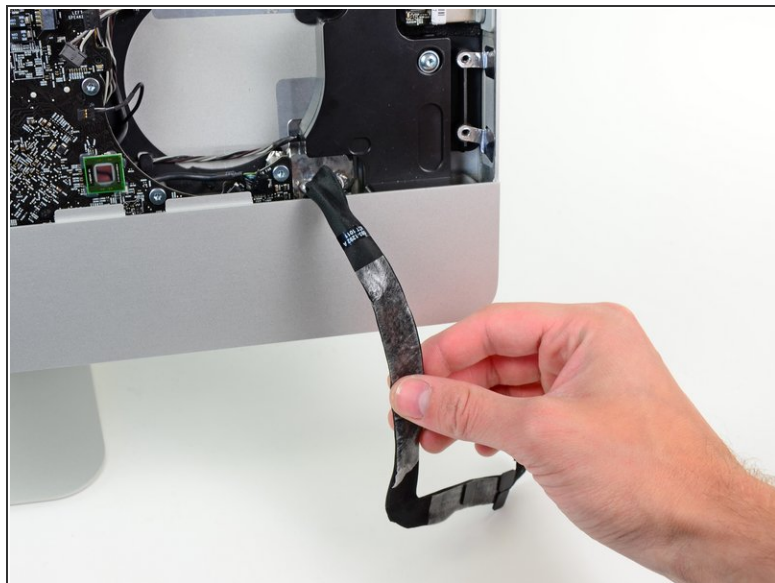
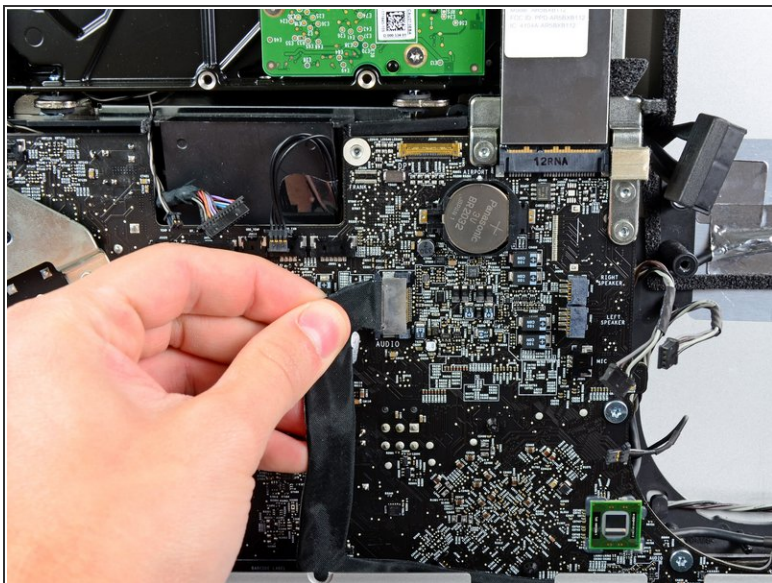
- Pull the power button connector toward the bottom left corner of the iMac to disconnect it from its socket on the logic board.

Step 10



- Use your thumbs to push the IR sensor connector toward the top edge of the iMac and out of its socket on the logic board.
- Pull the IR sensor board up from behind the front face of the outer case.
- Remove the IR sensor and set it aside.

Step 11



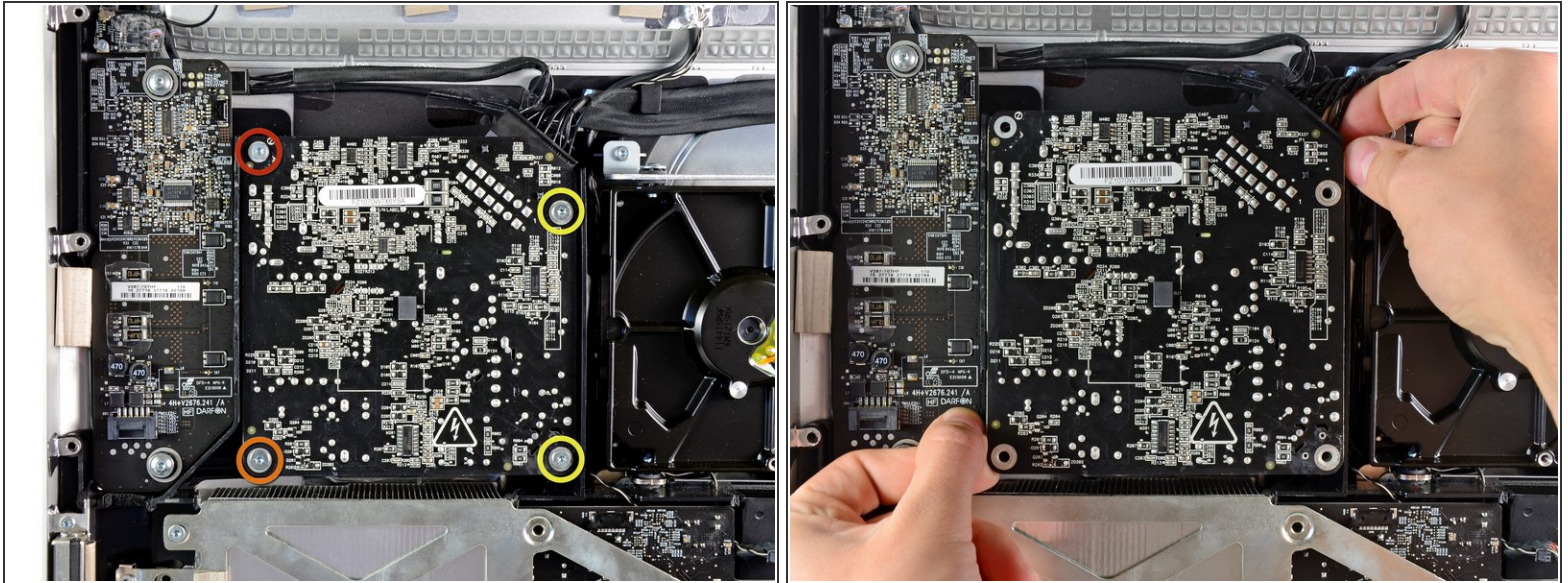
- Pull the audio port cable connector toward the left side of the iMac to disconnect it from the logic board.
- ⚠ Do not pull the cable toward yourself (away from the front face of the logic board) as you disconnect it.
- Peel the audio port cable off the front face of the logic board and let it hang down as shown in the second picture.

Step 12



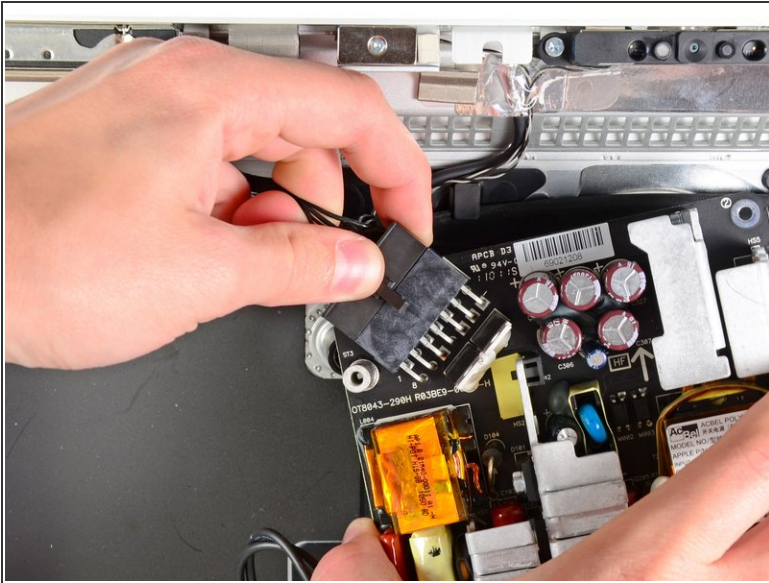
- Remove the following seven screws:
 - Two 7 mm T10 torx screws
 - One 30 mm T10 Torx screw
 - Two 25 mm T10 Torx screws
 - Two 21 mm T10 Torx screws

Step 13



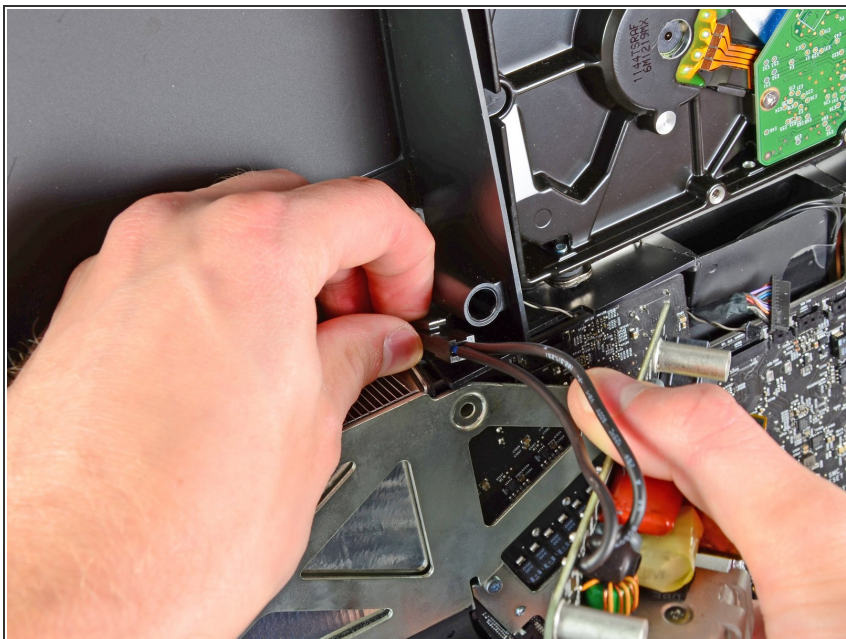
- Remove the following four screws from the power supply:
 - One 9.3 mm T10 coarse-threaded screw
 - One 25 mm T10 coarse-threaded screw
 - Two 22 mm fine-threaded screws
- Pull the upper right and lower left corners of the power supply away from the rear case to dislodge the mounting posts attached to the power supply's corners.

Step 14



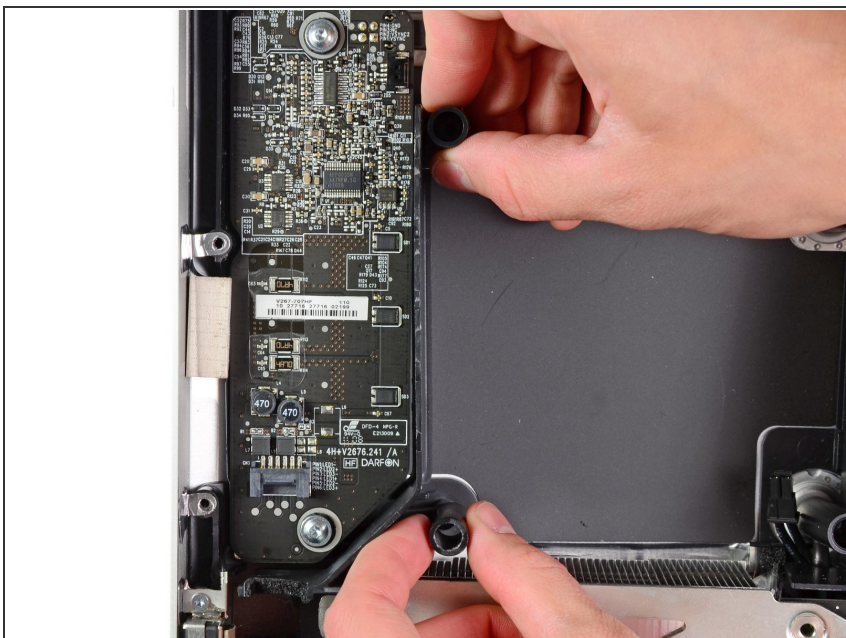
- Carefully lift the power supply out of the outer case and rotate it to expose the cable lock as shown, minding the DC-out and AC-in cables still attaching it to the iMac.
- Disconnect the DC-out cable by depressing the locking mechanism on the connector while you pull the connector away from its socket on the power supply.
- Once the locking mechanism has cleared the socket, pull the DC-in connector away from the power supply.

Step 15



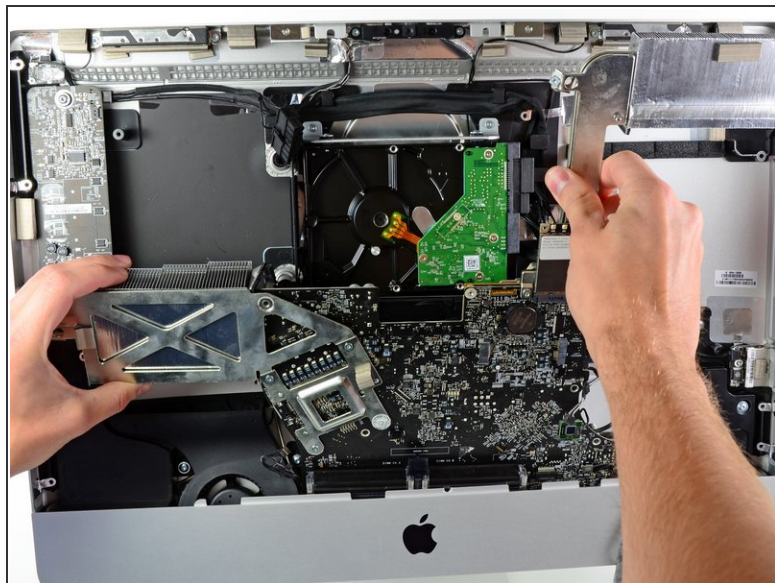
- Disconnect the AC-In cable by depressing the locking mechanism while pulling the connector away from its socket.
- Remove the power supply from the outer case.

Step 16



- Remove the plastic wall that is installed directly to the right of the LED driver board.

Step 17



- Slightly pull the logic board away from the back of the outer case, then lift it upward to clear the lower front face of the outer case.

To reassemble your device, follow these instructions in reverse order.