



JVC XL-333 Power Button Replacement

Replace the power button of your JVC XL-333 CD player.

Written By: Romenick Casabar



INTRODUCTION

This guide explains how to replace the power button for a JVC XL-333 compact disc player. The steps are fairly simple, and you only need a few basic tools. Most of the steps only require either removing screws or using a spudger (or similar tool) to remove wires that are in the way.



TOOLS:

- [Heavy-Duty Spudger](#) (1)
 - [Tweezers](#) (1)
 - [64 Bit Driver Kit](#) (1)
-

Step 1 — The Power Button



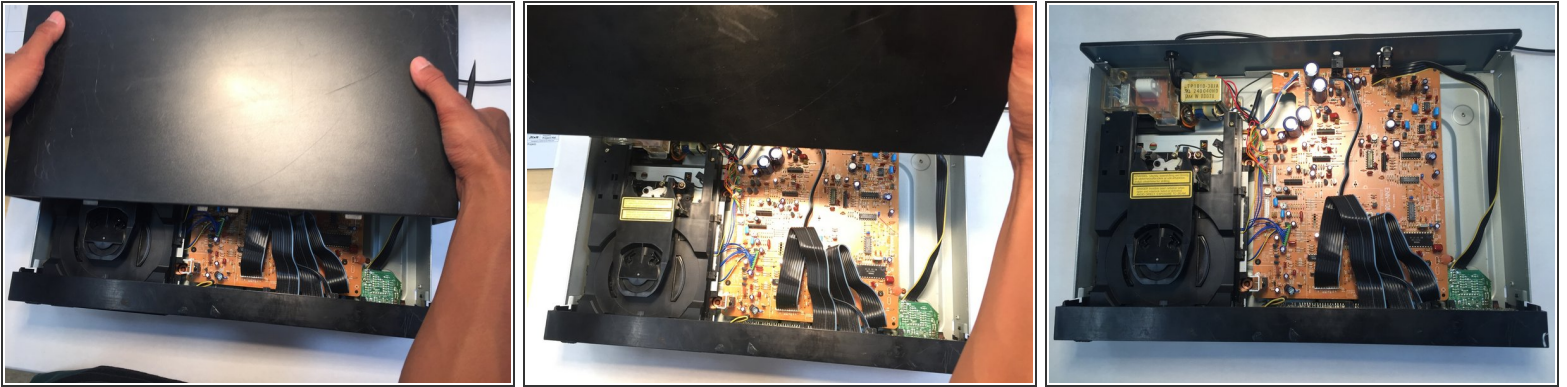
- Using your Phillips Head Screwdriver, remove the four screws with the red markup.
- Then, remove the three orange screws using your screwdriver.

Step 2



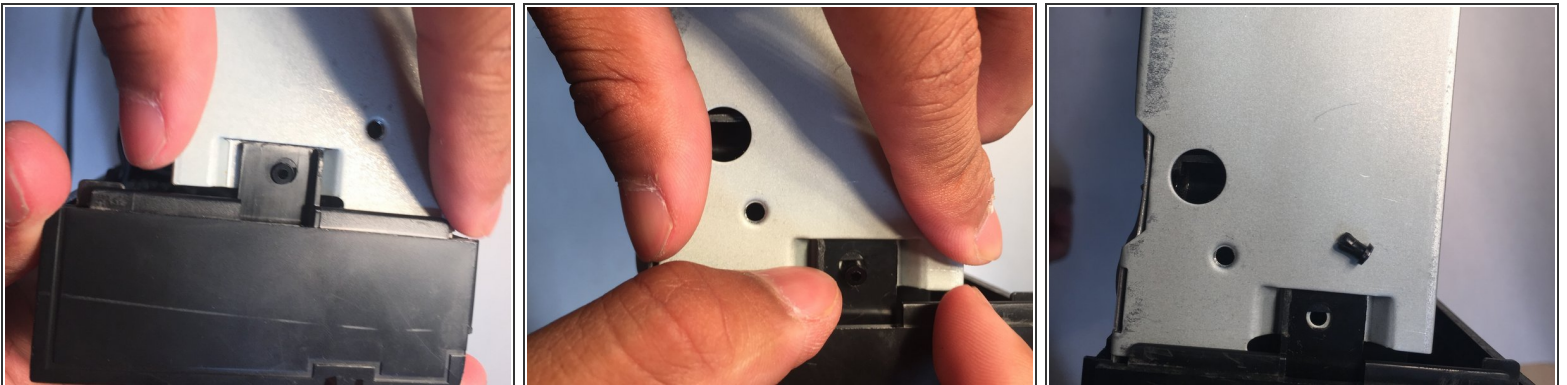
- Remove the two Phillips screws on both sides of the CD Player.

Step 3



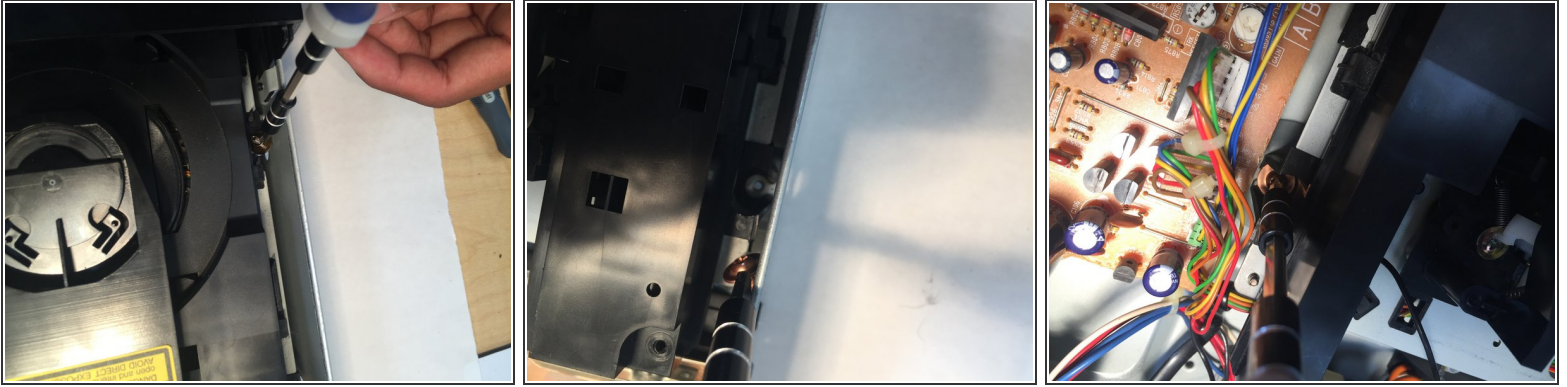
- Remove the top of the CD Player by holding each side of the roof then sliding it away from the front of the CD player.

Step 4



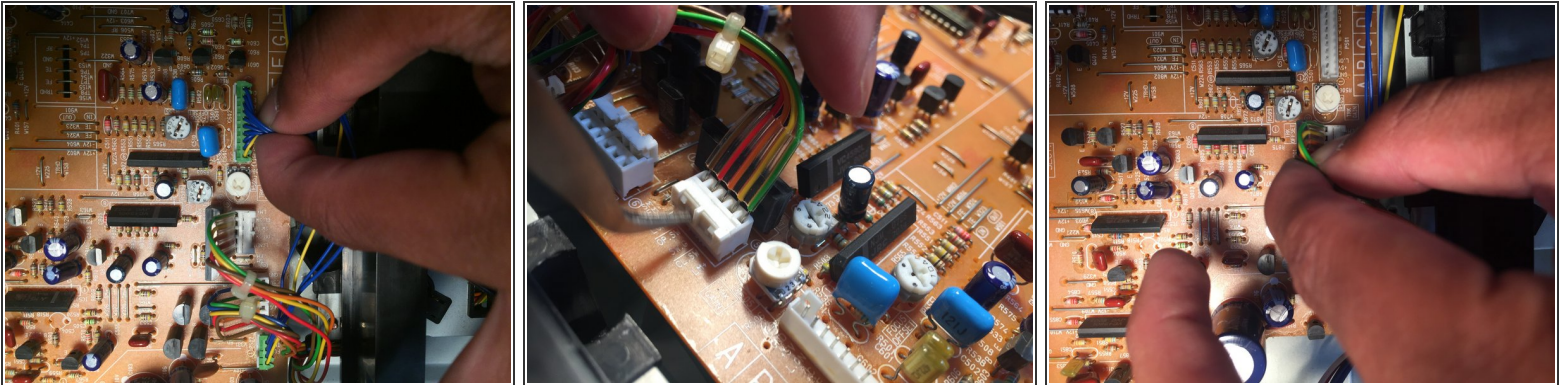
- The disk reader is located above the power button.
- Push out these tabs on both sides of the disk reader.

Step 5



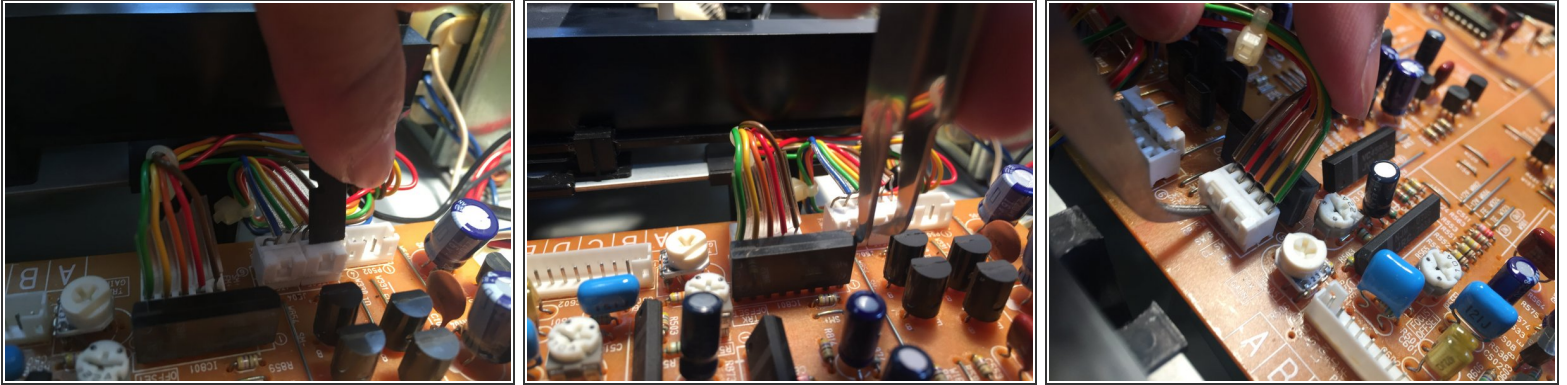
- Unscrew the four Phillips copper screws located at the four corners of the disc reader.
- After the screws are removed, gently pull the disc reader up and out of the CD player.

Step 6



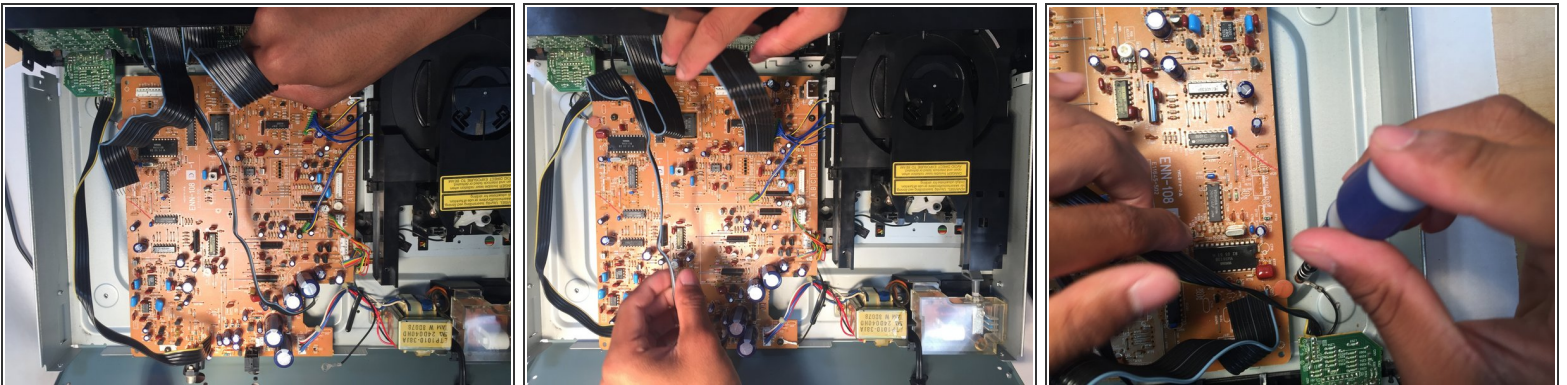
- Gently pull up to remove the two bunches of wires with a green connector from the motherboard.
- Remove the two groups of wires with a white connector by using your spudger or tweezers to pull up on the side of the connector, opposite of the wires. It may require some force

Step 7



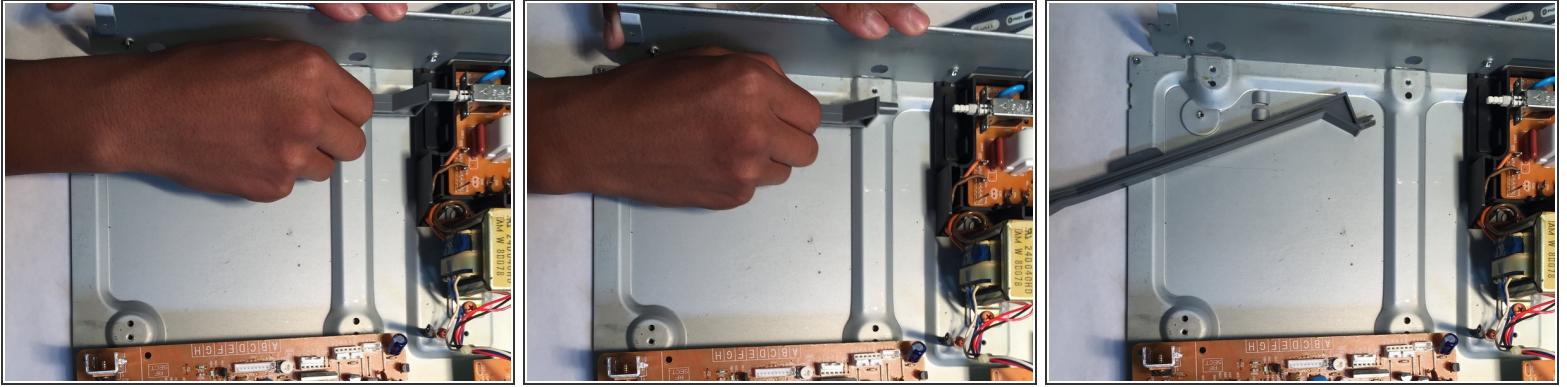
- These pictures offer other tricks and guidance on how to remove the wire connectors.
- move your spudger or tweezers in an upward motion to release the wires.

Step 8



- Remove the rest of the wires connecting the motherboard to the CD player with your spudger or tweezers.
- Remove the screw that connects the wire to the motherboard.

Step 9



- Find the power button trigger on the left side of the CD Player. It should be gray.
- Push it a couple times to make sure it works. If not hold it 3/4 of the way and pull with some force.
- Replace with a new one.
- Replace the motherboard, reattach the cables and repeat the rest of the previous tasks in reverse.

To reassemble your device, follow these instructions in reverse order.