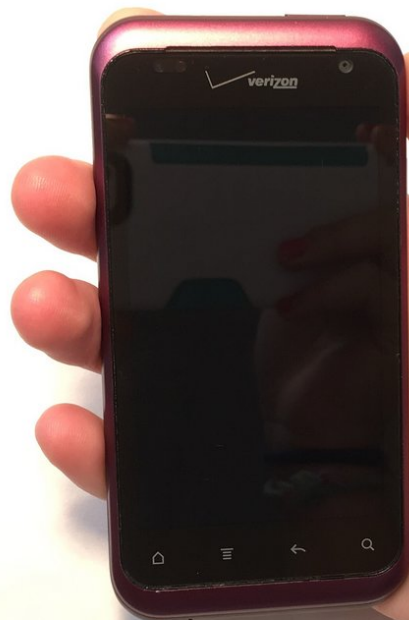




# HTC Rhyme charging port Replacement

This guide will show you how to replace the...

Written By: Rebecca Chapman



# INTRODUCTION

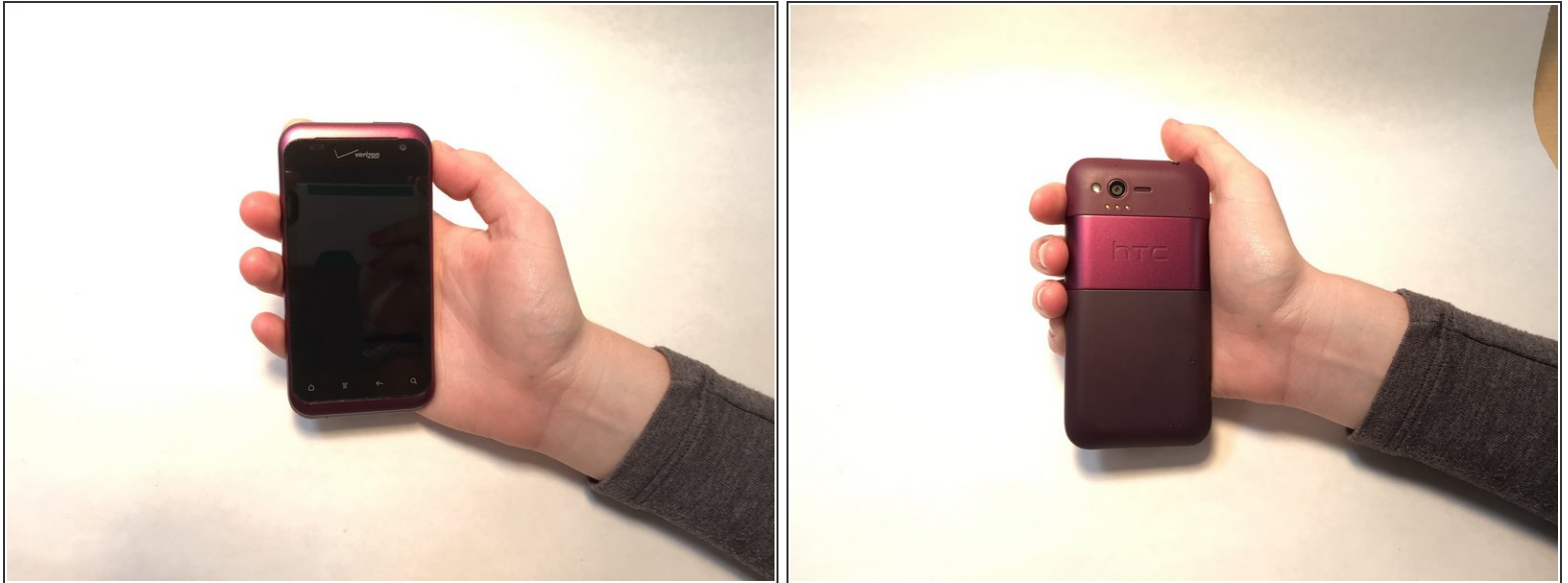
This guide will show you how to replace the charging port of the HTC Rhyme.



## TOOLS:

- [Tweezers](#) (1)
  - [iFixit Opening Tool](#) (1)
  - [Spudger](#) (1)
  - [64 Bit Driver Kit](#) (1)
  - [Soldering Workstation](#) (1)
-

## Step 1 — Charging Port



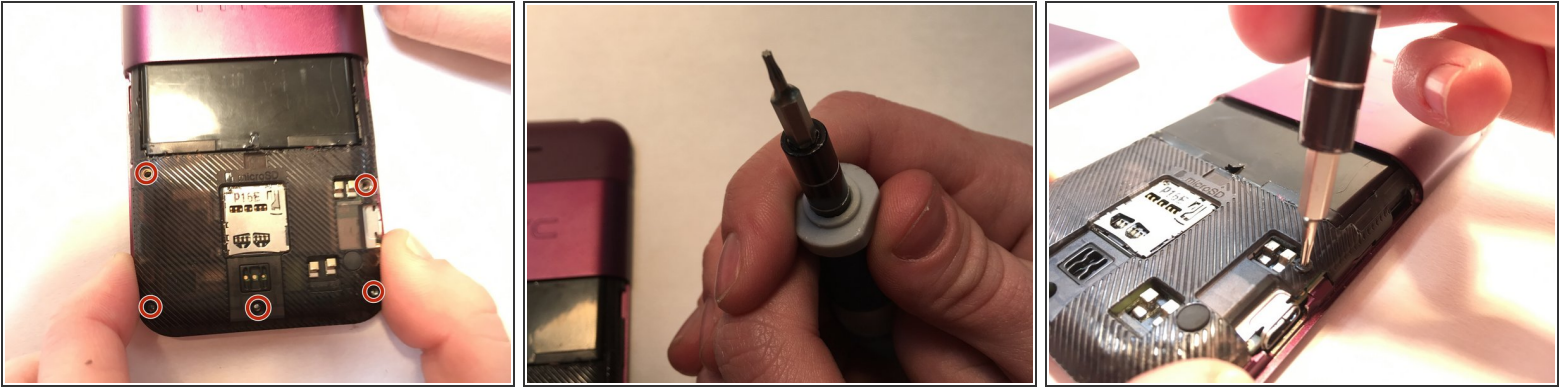
- Image of the front and back of the HTC Rhyme.

## Step 2



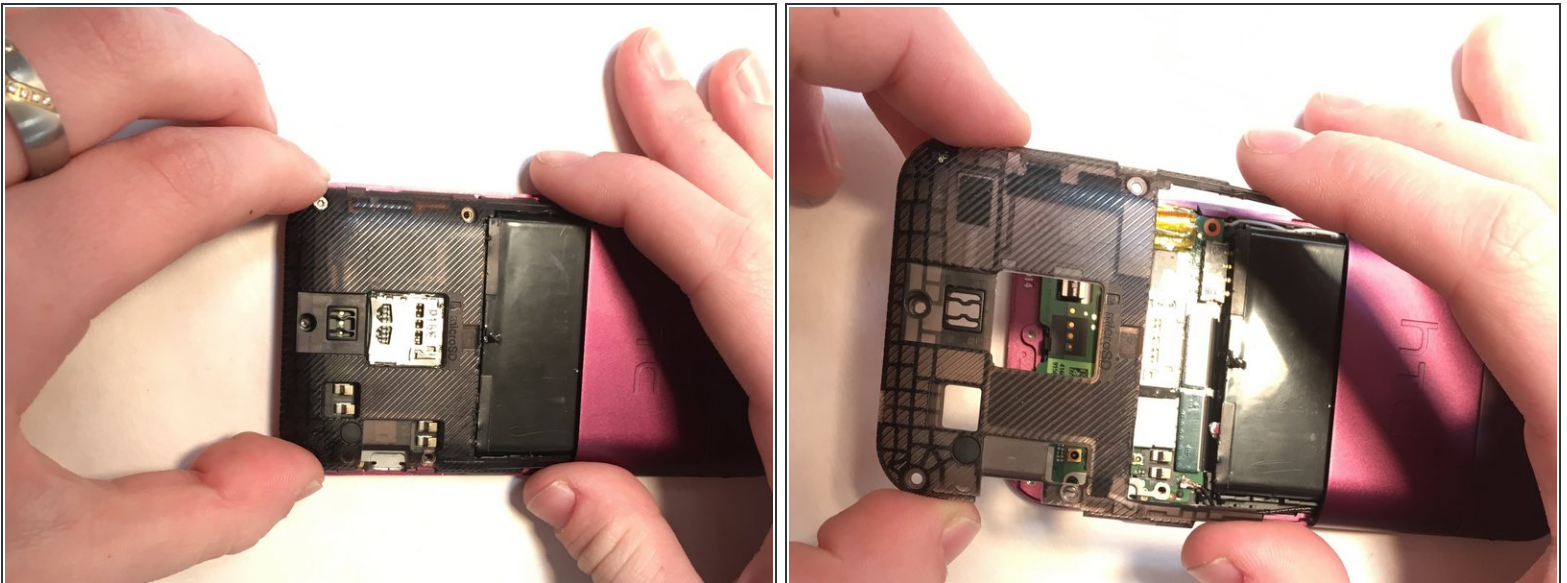
- Remove the back cover by pulling down on the lower half.

### Step 3



- Use a T5 to remove the five highlighted screws in the image.

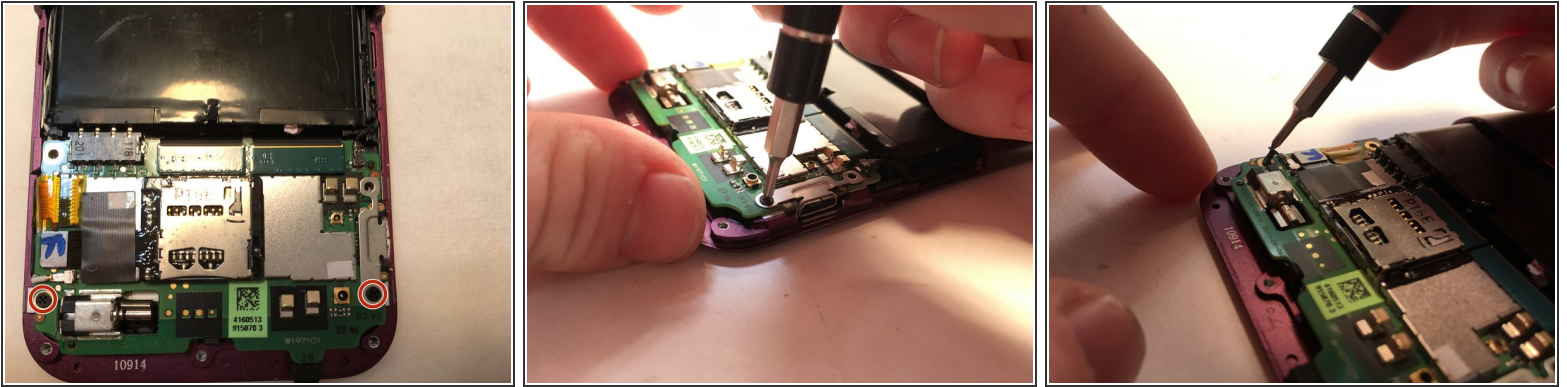
### Step 4



- Once the screws are removed, slide the back cover off of the phone.

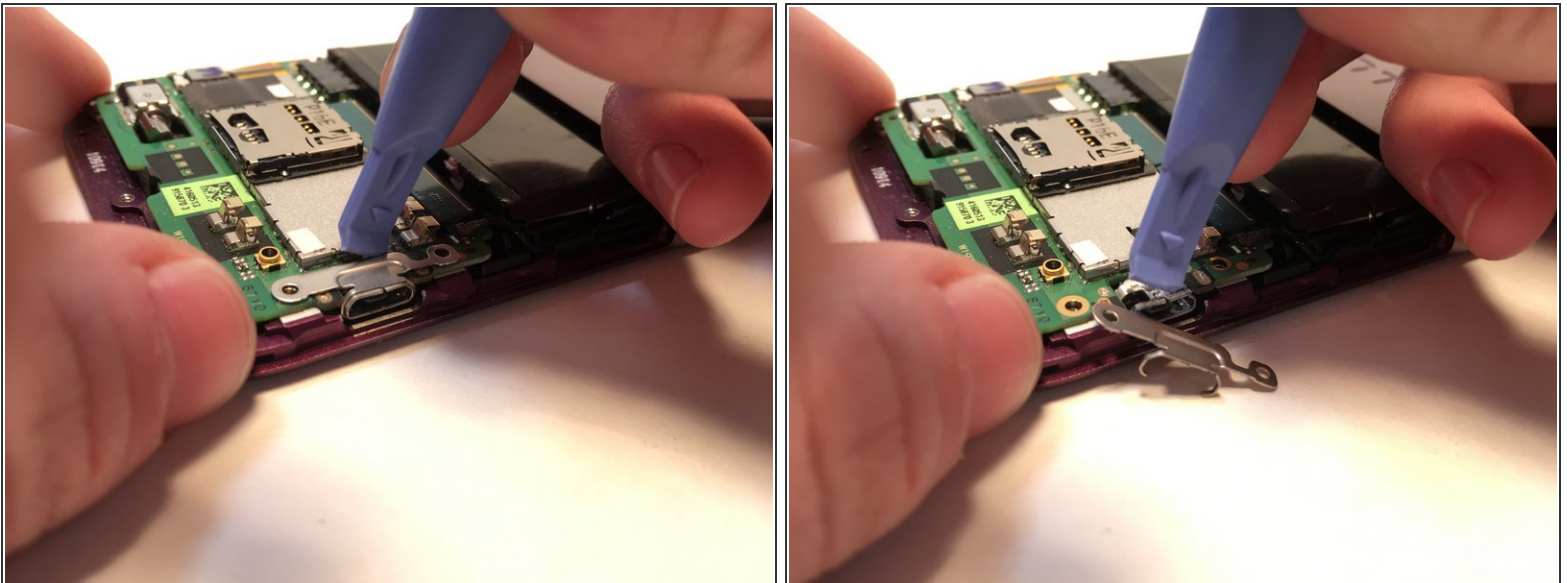


## Step 5



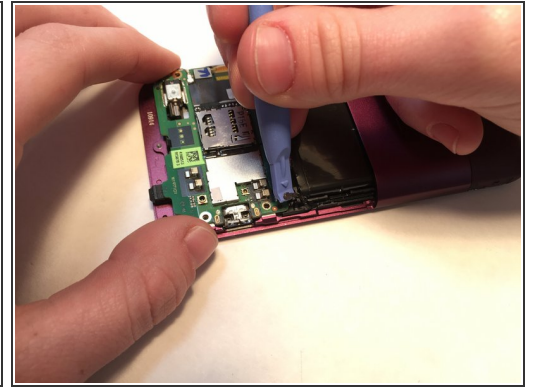
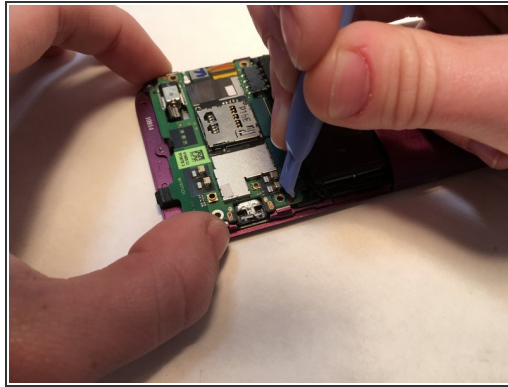
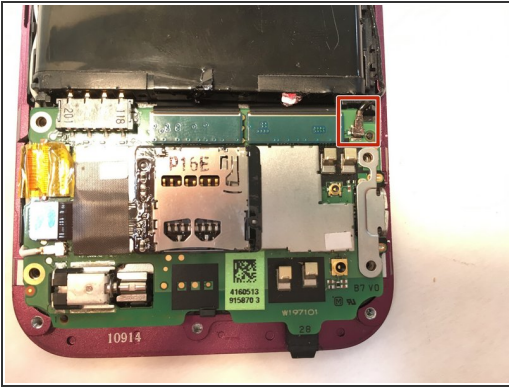
- Remove the two screws highlighted in the image with a Phillips screwdriver.

## Step 6



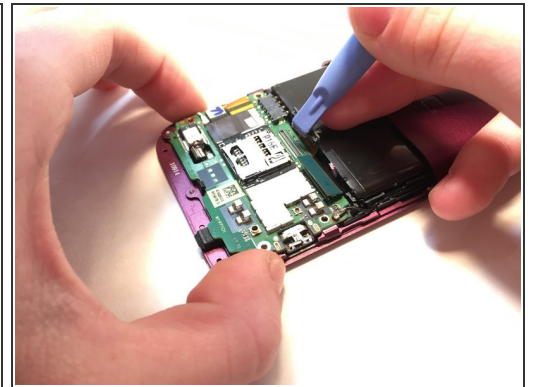
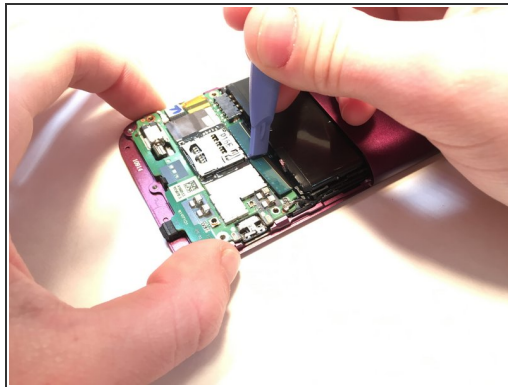
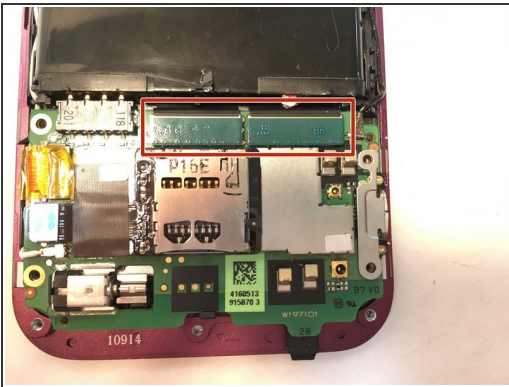
- Push off the small silver piece resting above the charging port.

## Step 7



- Disconnect the black cable on the upper right side of the motherboard.

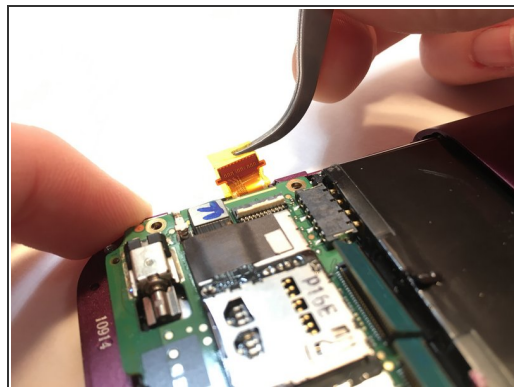
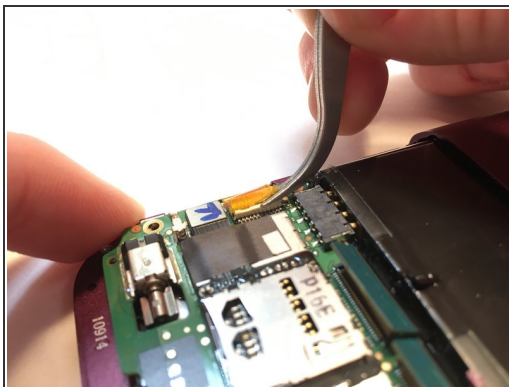
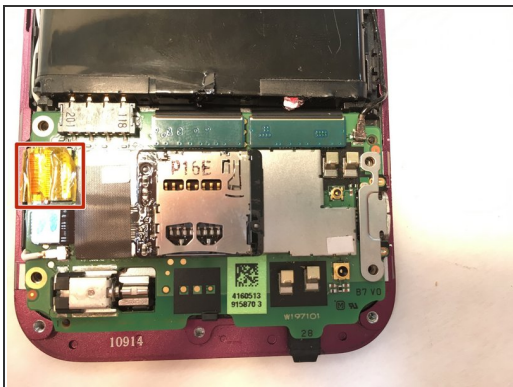
## Step 8



- Disconnect the green cables in the upper center section of the motherboard.



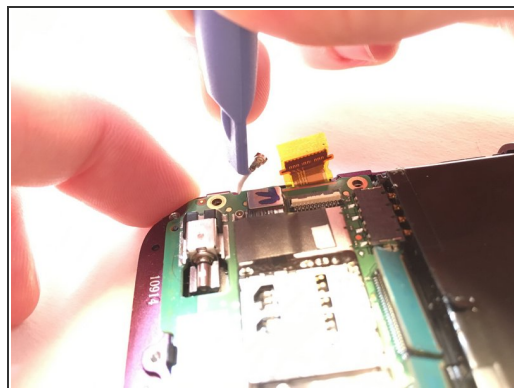
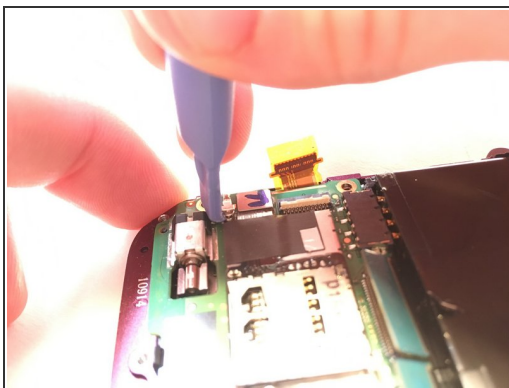
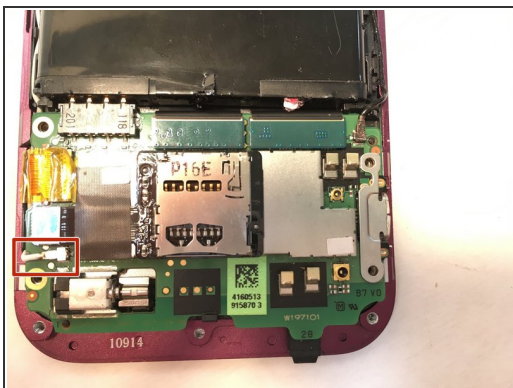
## Step 9



- Disconnect the yellow cable by gently pulling on it with tweezers.

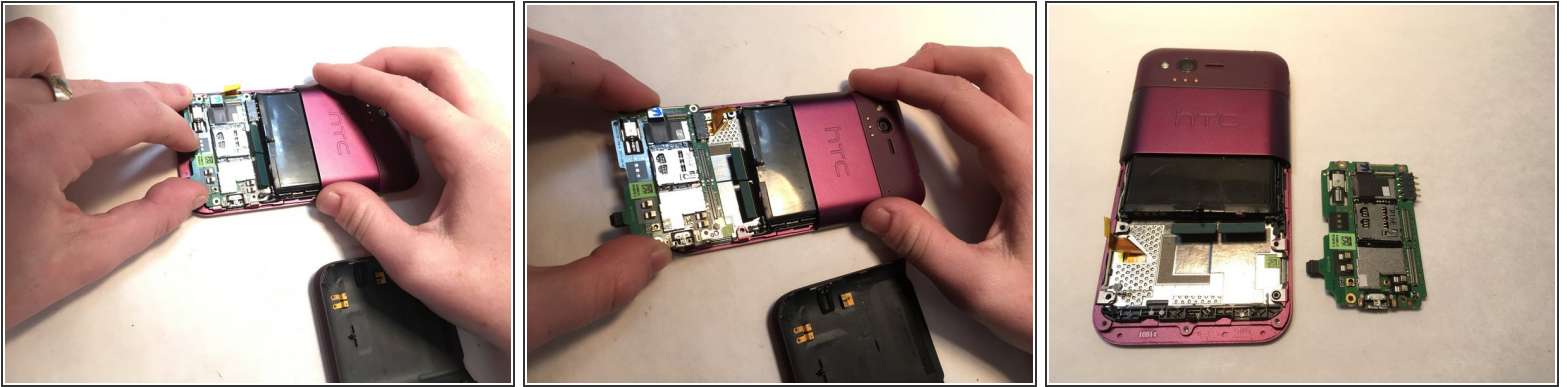
☞ When assembling, use your fingers to reconnect the wire.

## Step 10



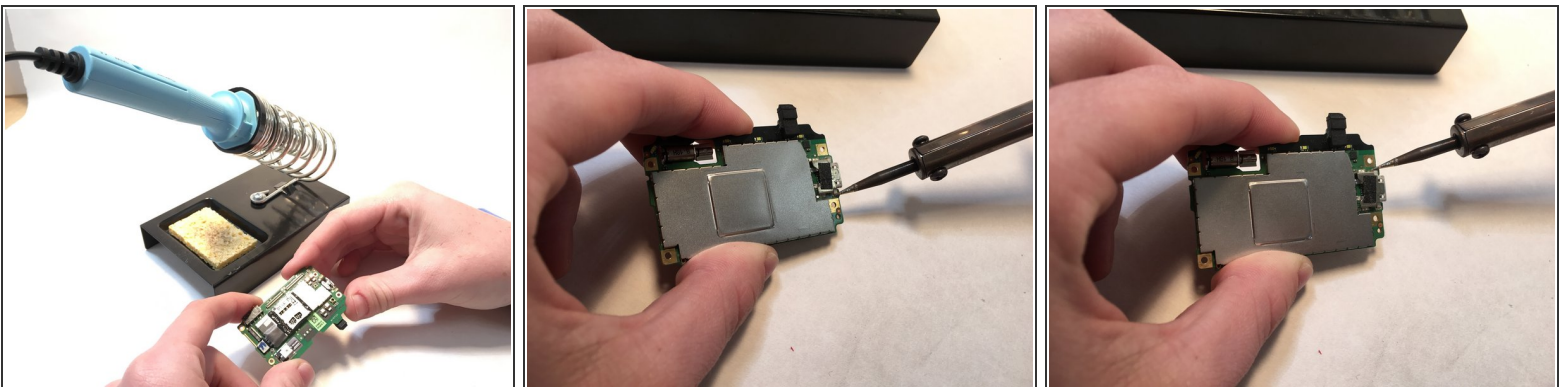
- Disconnect the white cord on the lower left side of the motherboard.

## Step 11



- Gently remove the motherboard with your hand.

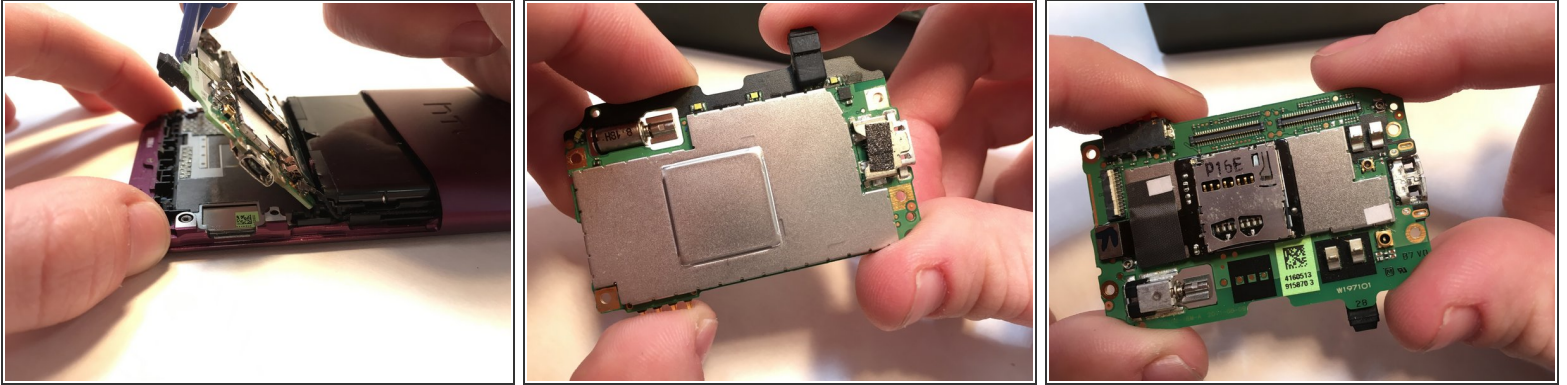
## Step 12



- Desolder and remove the charging port on the motherboard.
- Solder a new charging port onto the pads where the previous charging port had been.



## Step 13



- Follow steps 11 through 1, to put the phone back together.

To reassemble your device, follow these instructions in reverse order.