



Generic TV Remote IR LED Replacement

Replace a broken or malfunctioning IR LED on a generic TV Remote and learn how to check if it works.

Written By: Geoffrey Smith



INTRODUCTION

If you are experiencing an unresponsive TV remote it could be due to a malfunctioning Infrared (IR) LED. The IR LED emits a signal received by the TV which allows the user to adjust and control the features of their TV. In this guide you will find how to repair your remote by replacing the IR LED.

Be sure to remove the battery prior to beginning the repair.



TOOLS:

- [iFixit Opening Tools](#) (1)
- [Soldering Iron](#) (1)



PARTS:

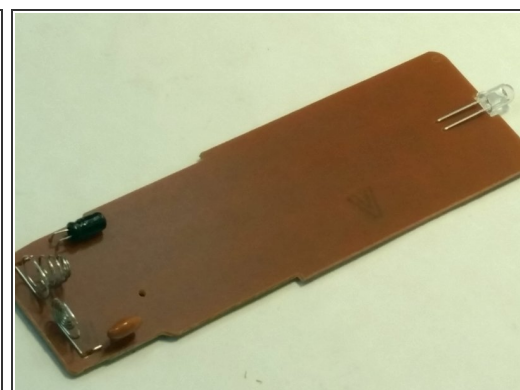
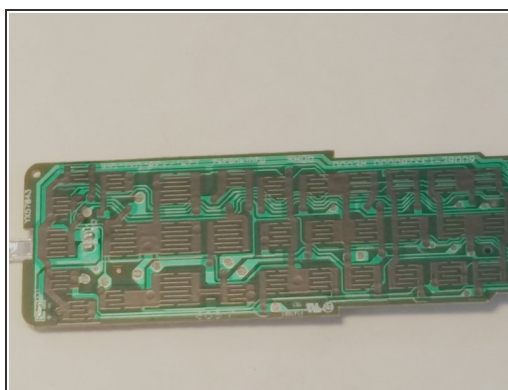
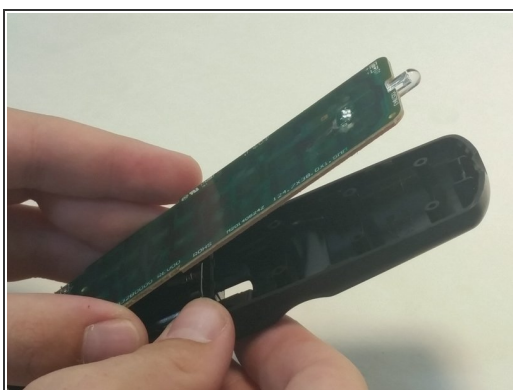
- [IR LED](#) (1)

Step 1 — IR LED



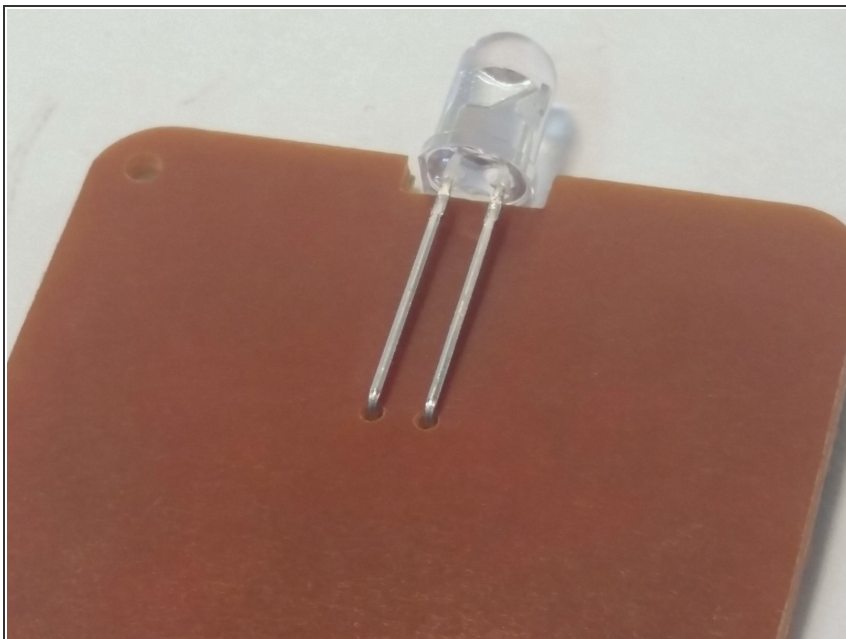
- Starting to the side of the front LED, pry up the top of the remote.
- Remove the top of the remote to expose the circuit board.

Step 2



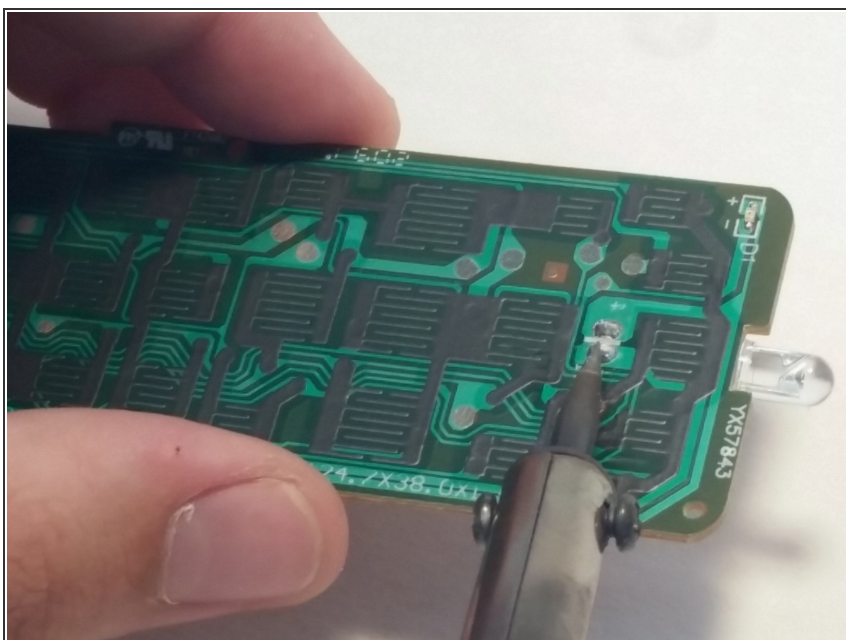
- Remove the circuit board by gently lifting it from the casing.
- Flip over the board so that the leads of the LED are facing upward.

Step 3



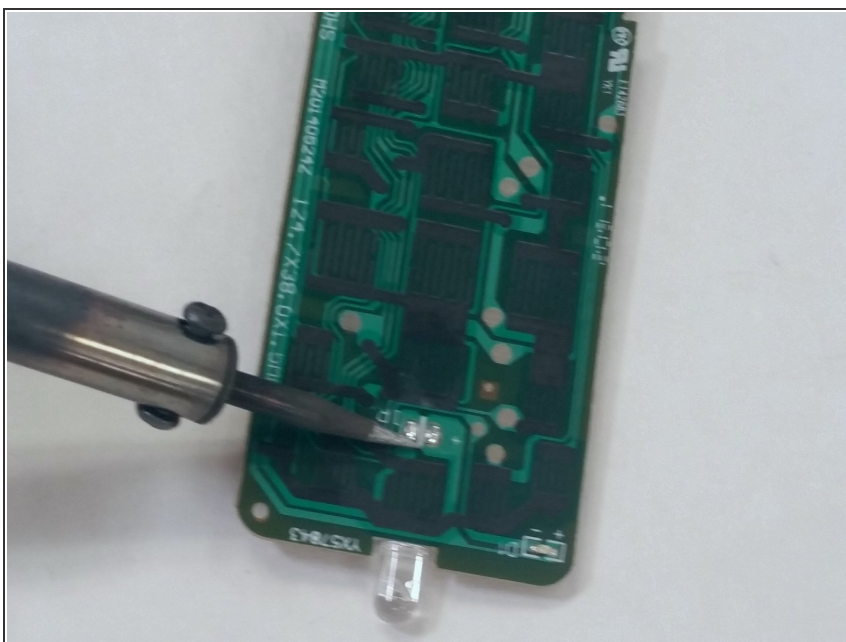
- Clip the leads of the LED.
- Bend the LED downward until it makes a 90 degree angle with the circuit board.

Step 4



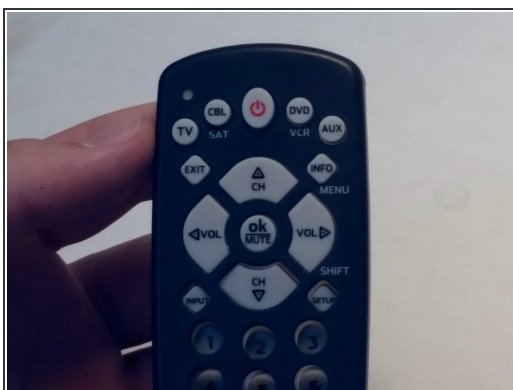
- Desolder the broken LED using a soldering iron and desoldering braid.

Step 5



- Solder the new LED in the same spot as the old one.
- ☑ Make sure that the longer lead (positive) goes through the opening marked positive (+) before soldering.

Step 6



- ☑ Make sure the buttons and the circuit board are placed correctly before reassembly.

Step 7



- i** To check if your remote is now working, first make sure the batteries are in correctly. Then, press any button and aim the remote at a smartphone camera. If the LED is working, a red flashing light will be reflected in the camera.

To reassemble your device, follow these instructions in reverse order.