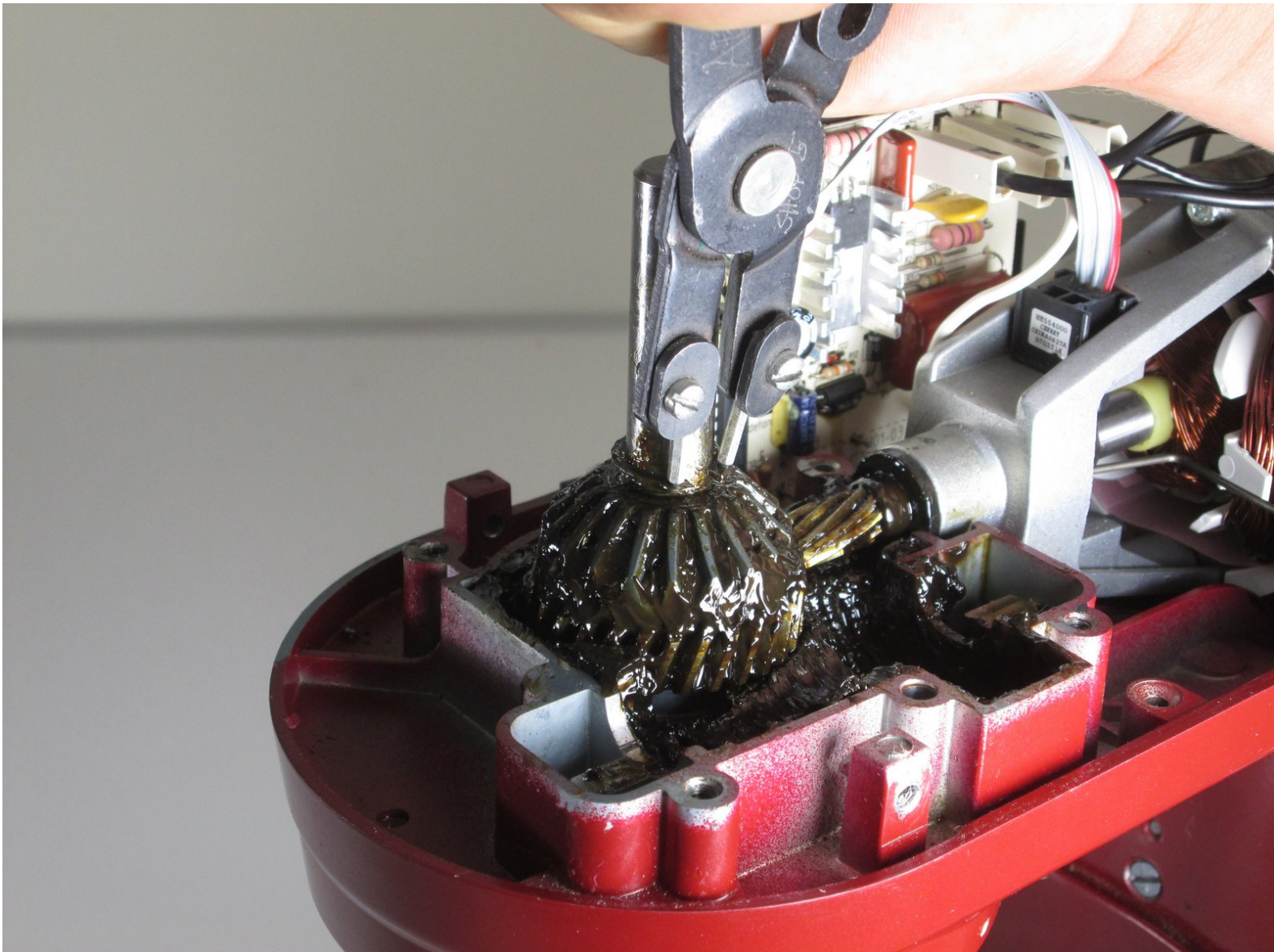




KitchenAid Professional 600 Bevel Gear Replacement

The Bevel gear works with the Worm gear to rotate the spindles attached to the mixer.

Written By: Luke





TOOLS:

- [Phillips #2 Screwdriver](#) (1)
- [Snap Ring Pliers](#) (1)

Step 1 — Top Cover



- Take out the screw which holds on the silver band using a Phillips #2 screwdriver.
- Remove the silver band.

Step 2



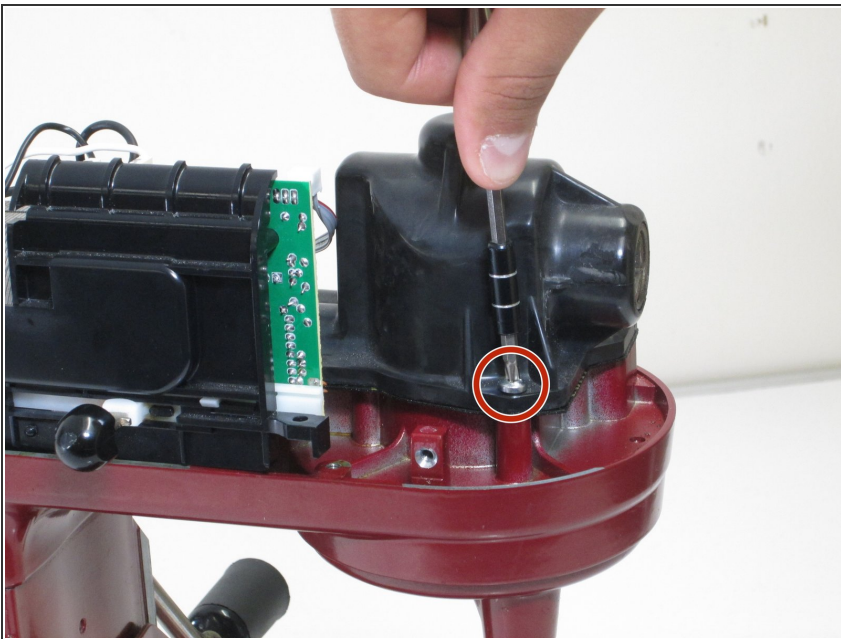
- Remove the four Phillips #2 screws located around the mixer where the band was removed.
- ⓘ This picture only shows two of the screws that you need to remove. The other two are on the exact opposite side of the mixer.

Step 3



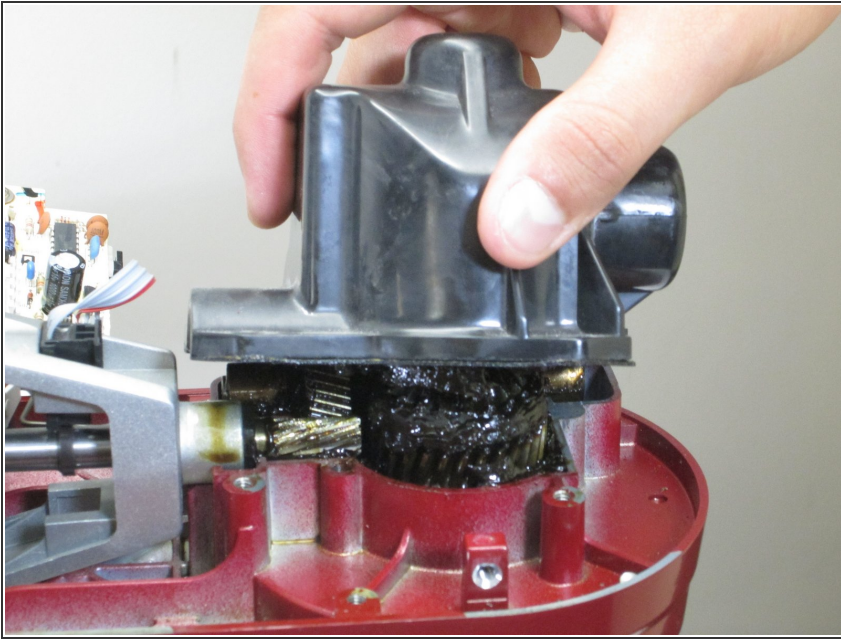
- Remove the top of the mixer to reveal the inner parts.
- ⓘ The top should lift off, but may not if it is stuck. A sharp strike from the back with the hand may unstick it. It will slide forward about a 3/8 of an inch. Push it back again from the front and it should be free enough to lift.

Step 4 — Gear Housing Cover



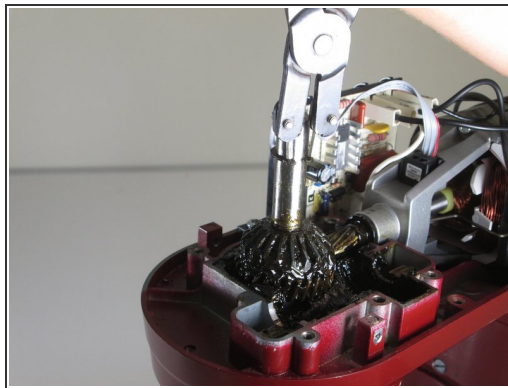
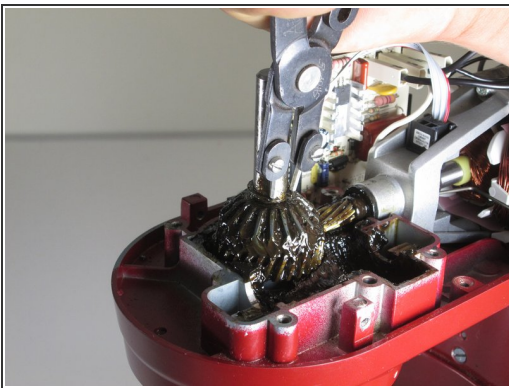
- Remove the 4 Phillips #2 screws connecting the black housing cover to the device.
- ⓘ Only one of the screws is seen in the picture. The other three are also located around the black housing cover.

Step 5



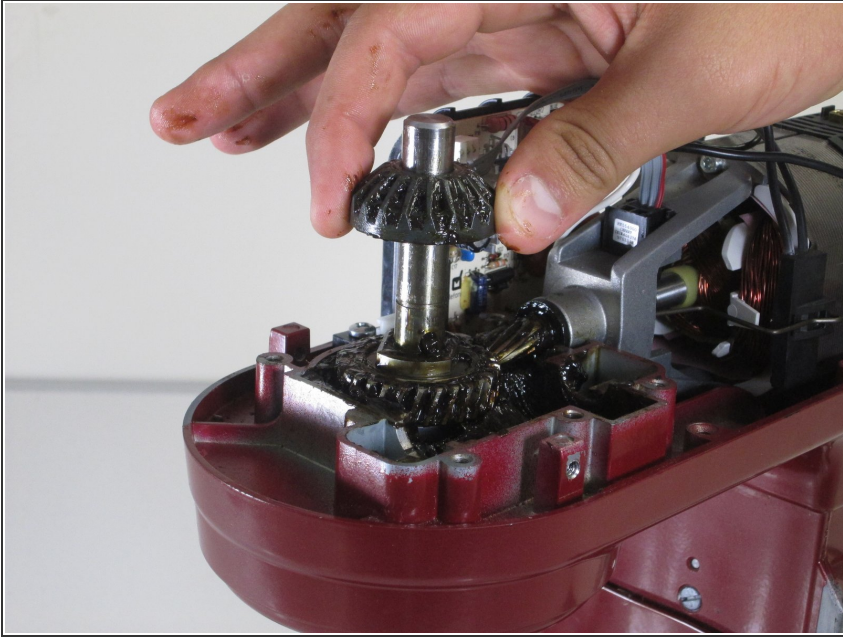
- Take off the black housing cover.

Step 6 — Bevel Gear



- To remove the Bevel Gear, remove the snap ring wrapped around the base of the gear using Snap Ring pliers.

Step 7



- Slide the Bevel Gear off.
- ⓘ Remember to apply food safe grease onto your new replacement part before assembling the device back together.

To reassemble your device, follow these instructions in reverse order.