



Disabling the touch function

How to disable the touch function to disable unintentional opening and closing of the disc drawer or unintentional switching through the inputs.

Written By: Karsten



INTRODUCTION

How to disable the touch function to disable unintentional opening and closing of the disc drawer or unintentional switching through the inputs.



TOOLS:

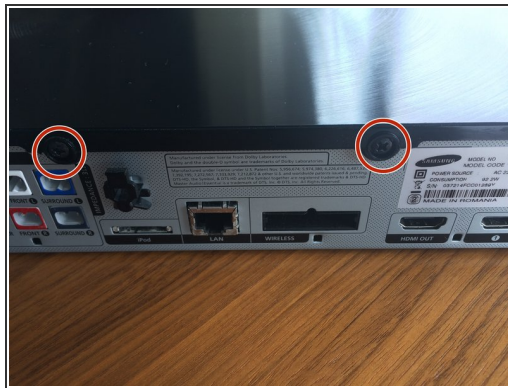
- [Phillips #2 Screwdriver](#) (1)
 - [Heavy-Duty Spudger](#) (1)
-

Step 1 — Disabling the touch function



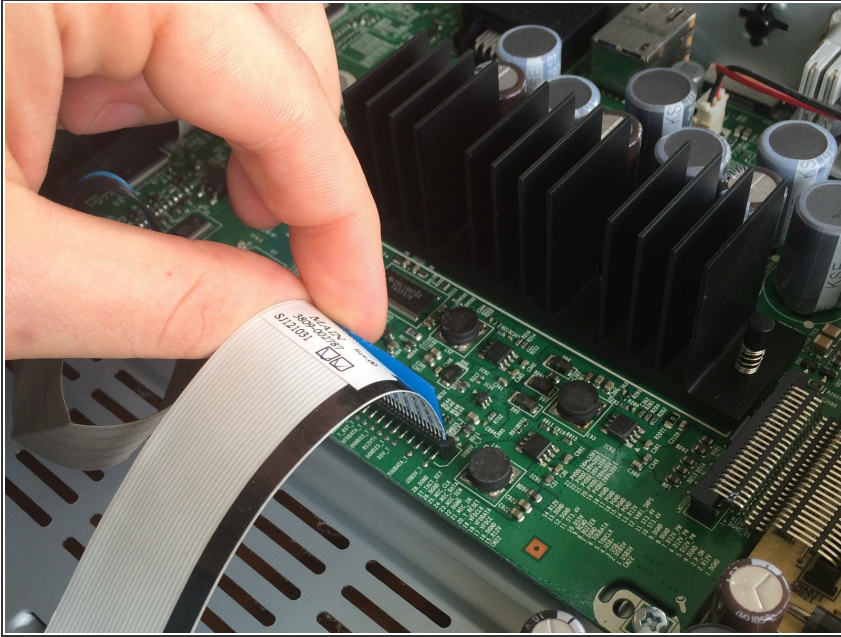
- First disconnect all the cables to avoid doing some damage to both player and yourself.

Step 2 — Open the case



- At the back of the Player you'll find 4 #2 Phillips screws.
- Once undone you can slide the case ca. 1,5cm towards you.
- Now carefully pull the sides of the cover away from the body and lift the cover up.

Step 3 — Deactivate the touch



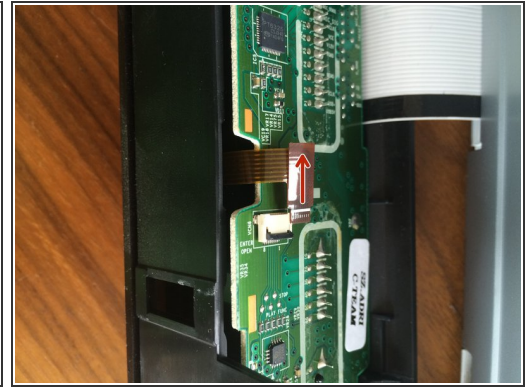
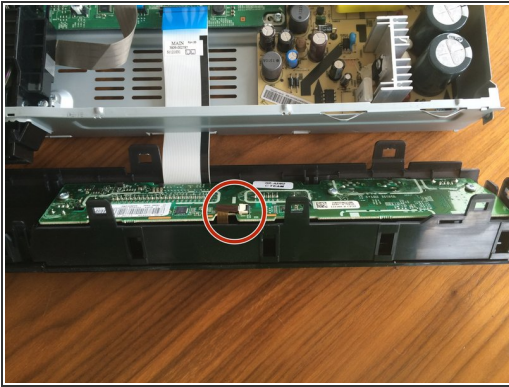
- Now there are two possibilities:
 - Either you want to see everything and have some tools, then you can use step 4 and 5.
 - Or you don't, then you go to step 6.

Step 4 — The scenic route 1/2



- Just be sure, you have disconnected the white ribbon from the mainboard, so you wouldn't damage the connector while taking the front cover off.
- Now you have to get the metal spudger and gently work your way below the clips on the side and loosen them.
- Then the ones at the top but careful, there are two left and right of the disk tray looking a bit different and consisting entirely out of snappy plastic.
- Now the front cover will tilt forward.
- Either you take the lower clips off as well, but the entire cover might jump towards you (in this case you have to make sure again, the blue ribbon is disconnected) or you just work with the gap you just created.

Step 5 — The scenic route 2/2



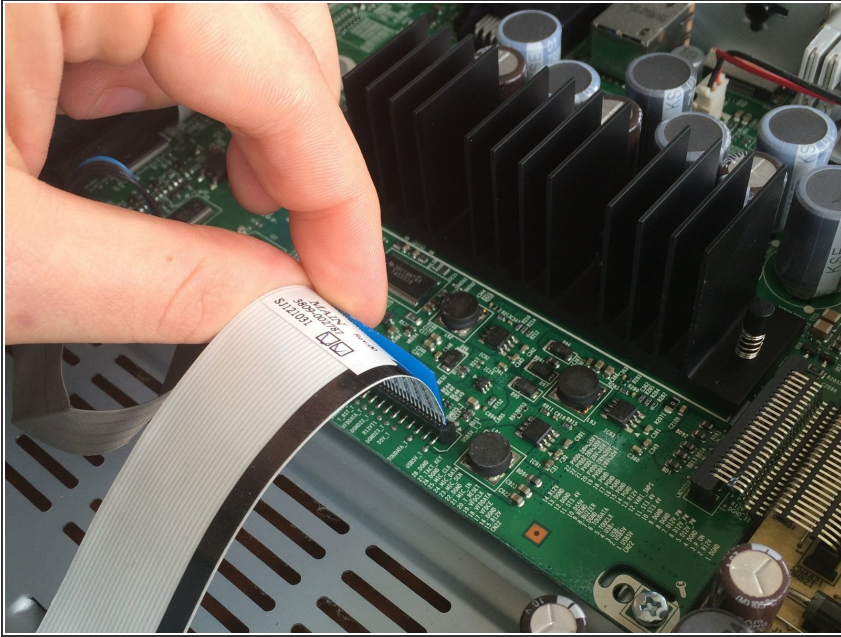
- Now you can take the spudger and open the little black clip on the connector holding the brown touch sensor ribbon.
- Then just pull the brown ribbon out carefully and you are done.

Step 6 — The Shortcut



- Get the spudger and lift the small black clip on the white connector where the brown touch control ribbon is connected to the board.
- Gently pull the brown ribbon out of the clip.

Step 7 — Reassemble everything



- After you have worked the magic don't forget to reconnect the white ribbon.
- Now twist the cover back on. Twist, because it might need some gentle force to get through the last couple of millimeters.
- Now your HT-E5550 will no longer unwantedly cycle through the sources or open and close the disc tray. The downside is that the touch-controls won't work either.

Thank you for trying. I hope it helps you as much as the fix helped me.