



D-Link DIR 600 Teardown

This is a teardown of the D-Link DIR 600 router, with information on how to get into the device.

Written By: Zach luc



INTRODUCTION

This is a teardown of the D-Link DIR 600 router, with information on how to get into the device.

TOOLS:

- [Essential Electronics Toolkit](#) (1)
-

Step 1 — Removing the Antenna



- Screw it off using your hands

Step 2 — Finding the screws



- There are two screws on the bottom, peel off the black rubber.

⚠ Removing the warranty sticker will VOID your warranty.

Step 3 — Opening it up



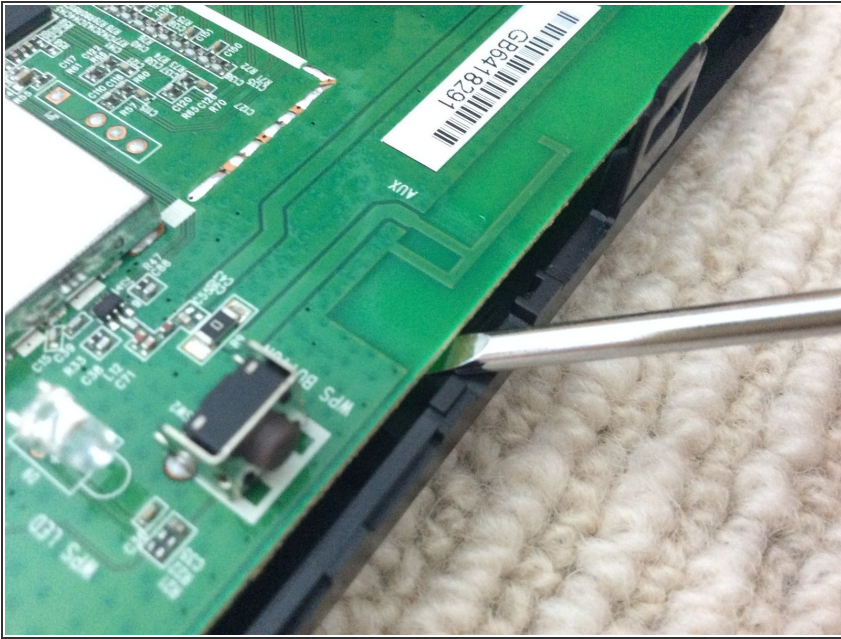
- Use a spudger or a flat screwdriver to open it up on both sides.

Step 4 — More screws



- Unscrew the two screws

Step 5 — Taking off the logic board



- Use a spudger or a flat screwdriver to take out the logic board

Step 6 — Conclusion



- ❗ That concludes our teardown!