



Amazon Echo Tweeter Replacement

This guide demonstrates how to replace the...

Written By: Alexander Albert



INTRODUCTION

This guide demonstrates how to replace the tweeter in the Amazon Echo. This speaker delivers the higher pitched sounds when the Echo talks to you or plays any audio. This guide should be helpful if the audio from your Echo sounds distorted.


TOOLS:

[TR10 Torx Security Screwdriver](#) (1)


[Heavy-Duty Spudger](#) (1)

Step 1 — Power and Speaker Driver Board

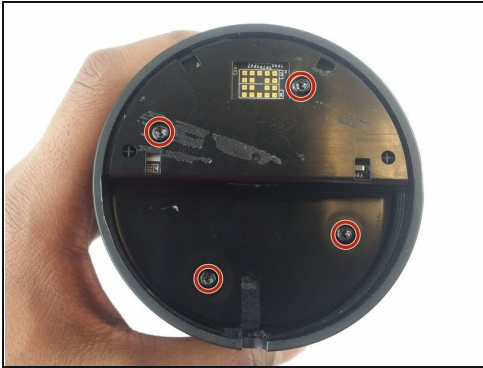


 **Power off and unplug your Echo before disassembly.** Failure to do so could result in injury or damage to the device.

- Peel off the rubber footing from the bottom of the Echo.

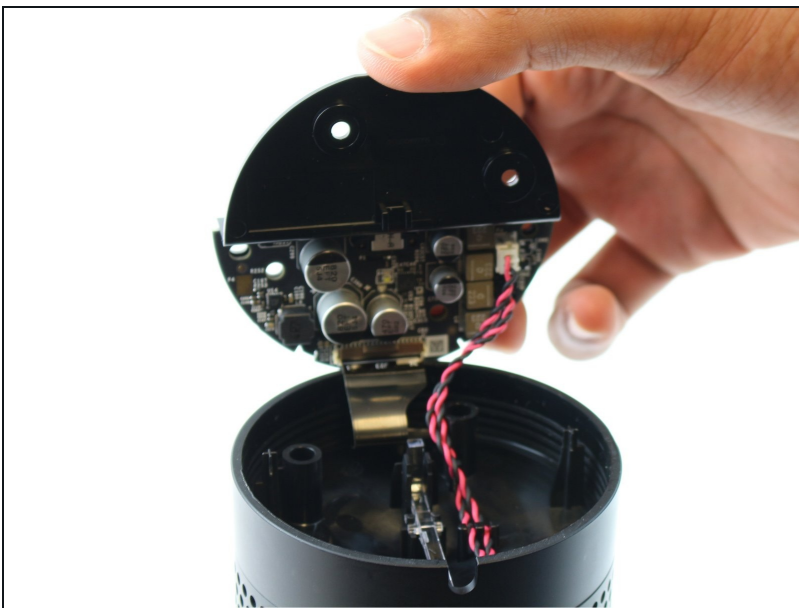
 **Do not pull the rubber footing too hard, as it could stretch out of shape. Use a spudger to help remove the foot if you have any trouble.**

Step 2



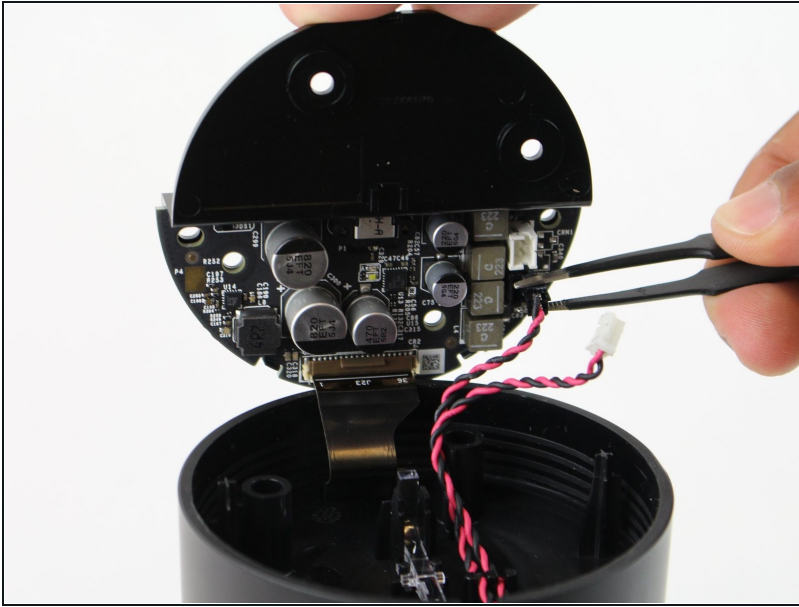
- Remove the four 42.8 mm T10 Torx screws from the bottom of the Echo.

Step 3



- Slowly lift the plate containing the board. Be careful not to disconnect any of the wires.

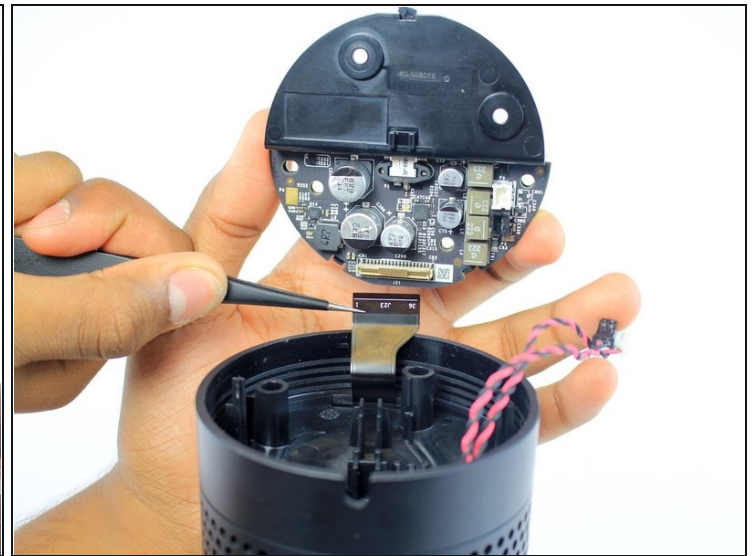
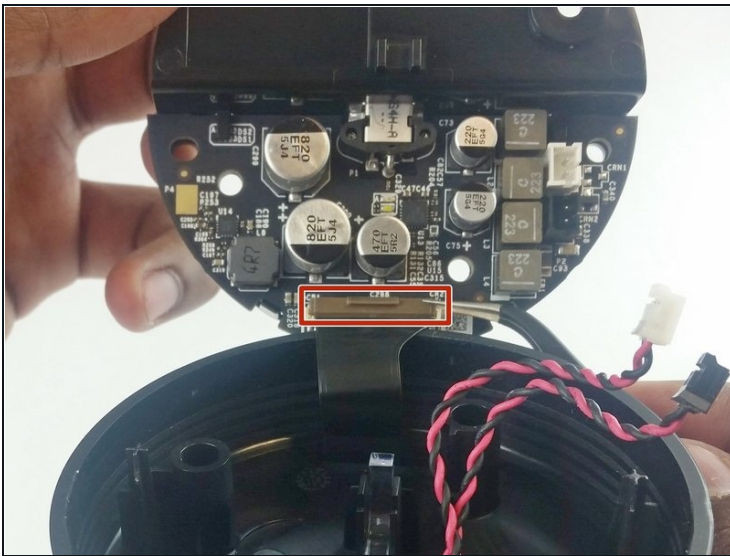
Step 4



- Using [tweezers](#), carefully disconnect the two red and black cables from their sockets on the board.

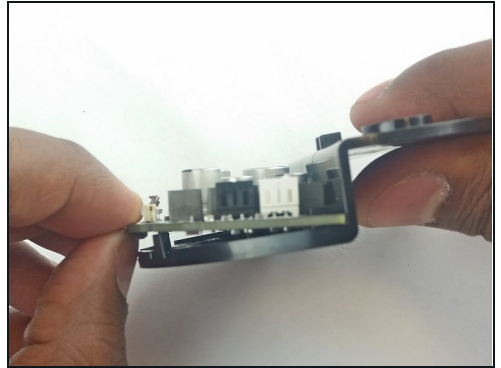
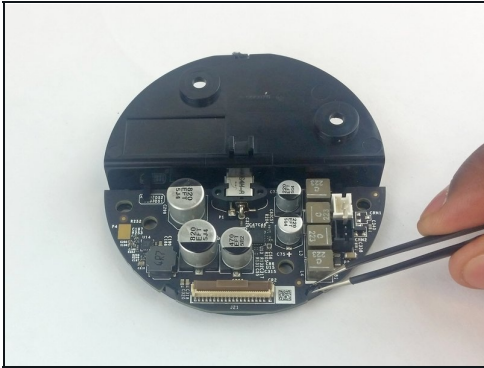
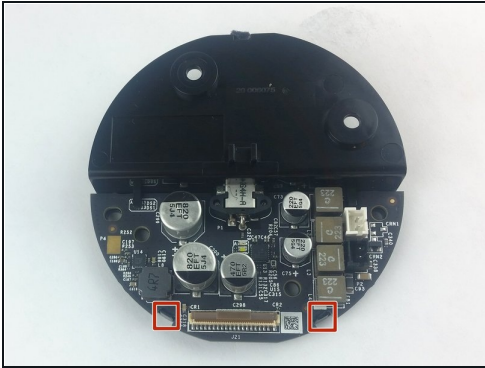
⚠ Tugging on the wires may damage the device. Pull from the plastic connectors instead.

Step 5



- Lift the brown plastic latch on the ZIF connector securing the driver board ribbon cable.
- Pull the ribbon cable from its connector. The plate and board should now be free from the Echo.

Step 6



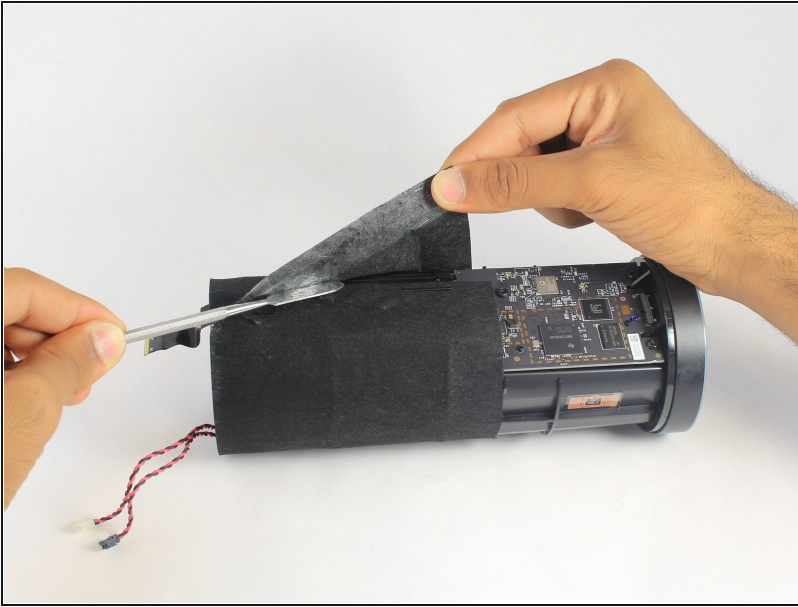
- Using the spudger, pull back the two plastic clips on the plate.
- Lift the board up and pull it away from the plate.

Step 7 — Tweeter Assembly



- Remove the plastic plate from the bottom of the device. Then remove the plastic shrouding.

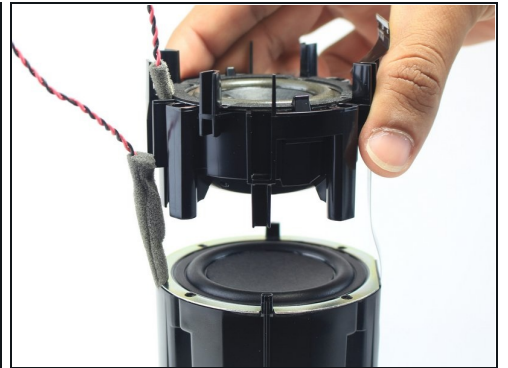
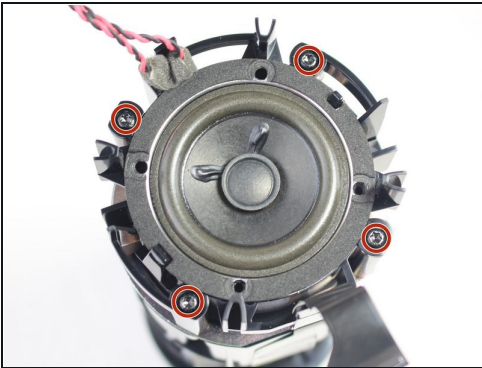
Step 8



- Peel off the black fabric wrapped around the Echo.

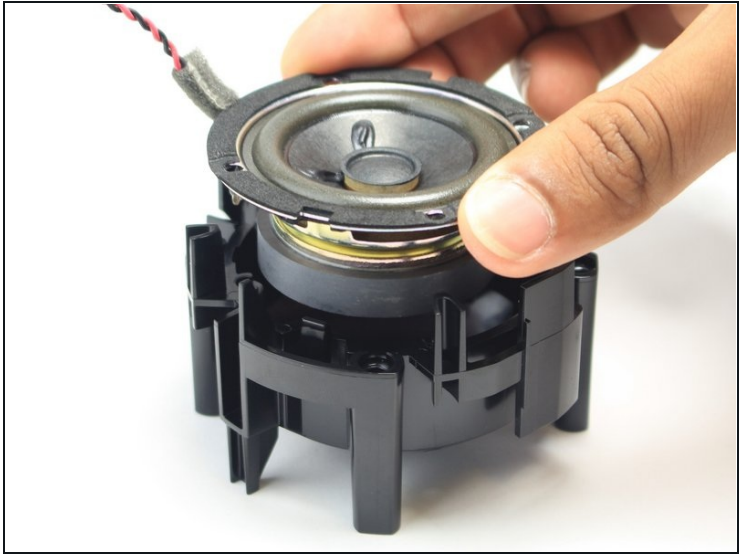
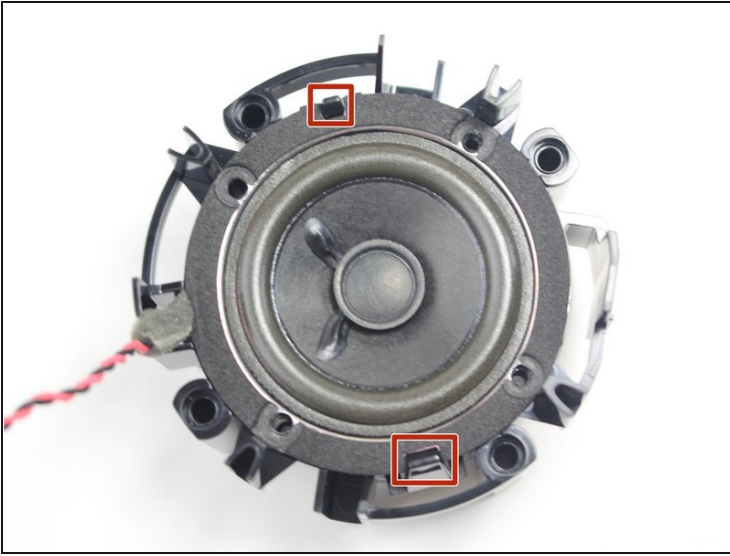
⚠ Be careful not to rip the fabric. Use a spudger to help remove the adhesive if you have any trouble.

Step 9



- Remove the four 42.8 mm T10 Torx screws around the tweeter.
- Lift the tweeter and its attached housing from the device.

Step 10 — Tweeter



- Using a spudger or your fingers, pull back the plastic clips near the edge of the tweeter.
- Remove the tweeter from its plastic housing.

To reassemble your device, follow these instructions in reverse order.