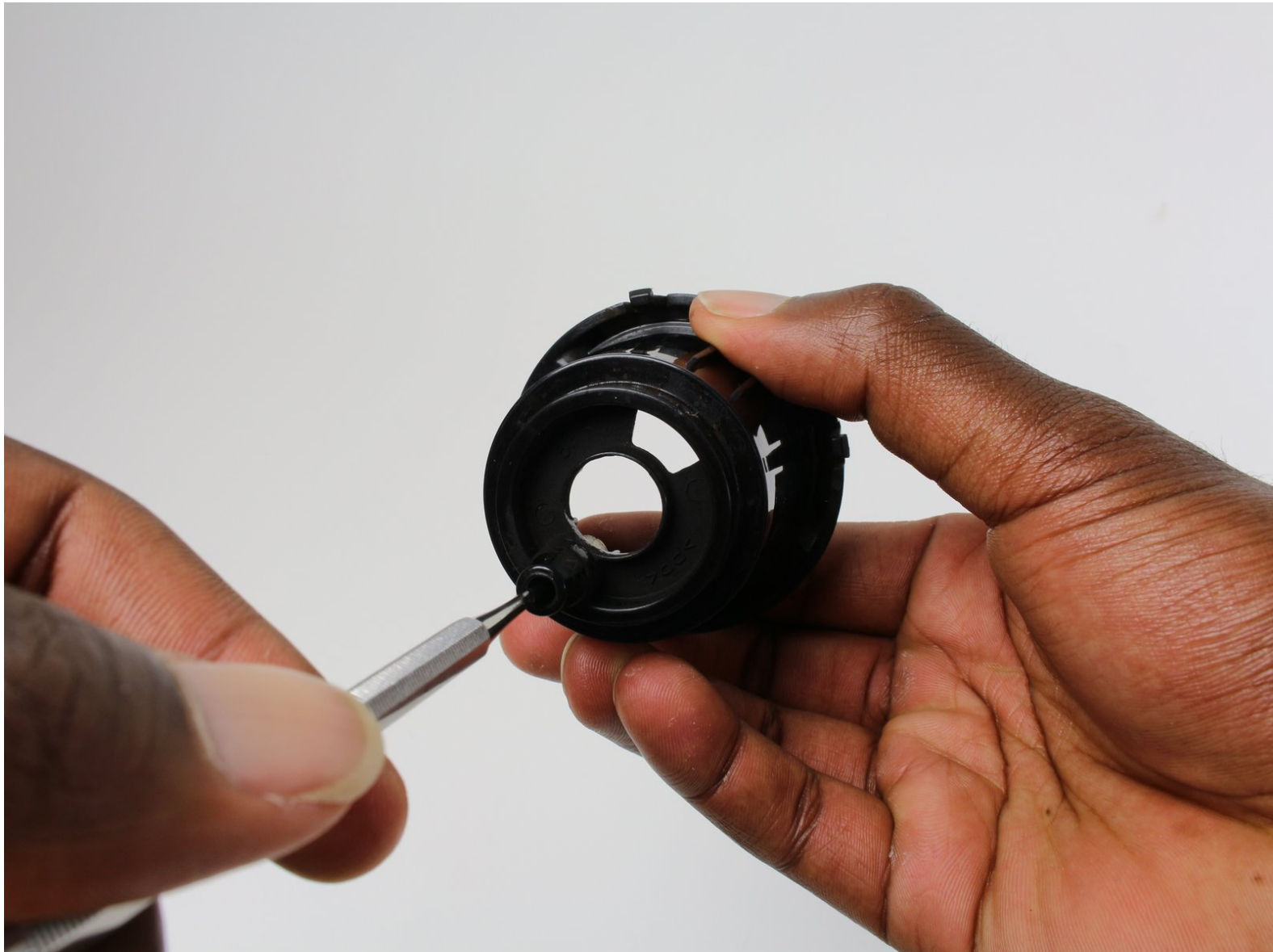




# How to Clean The Exit Needle of the Keurig B60

This guide summarizes how to clean the needle that punctures the K-Cup beverage canister.

Written By: Jake Wynn



---

## INTRODUCTION

The needle that punctures the K-Cup beverage canister can sometimes become clogged with coffee particles. Take caution as this needle is very sharp and can cut skin.



### TOOLS:

- [Paper Clip](#) (1)
-

## Step 1 — How to Clean The Exit Needle of the Keurig B60



- Lift Handle to open Lid

## Step 2



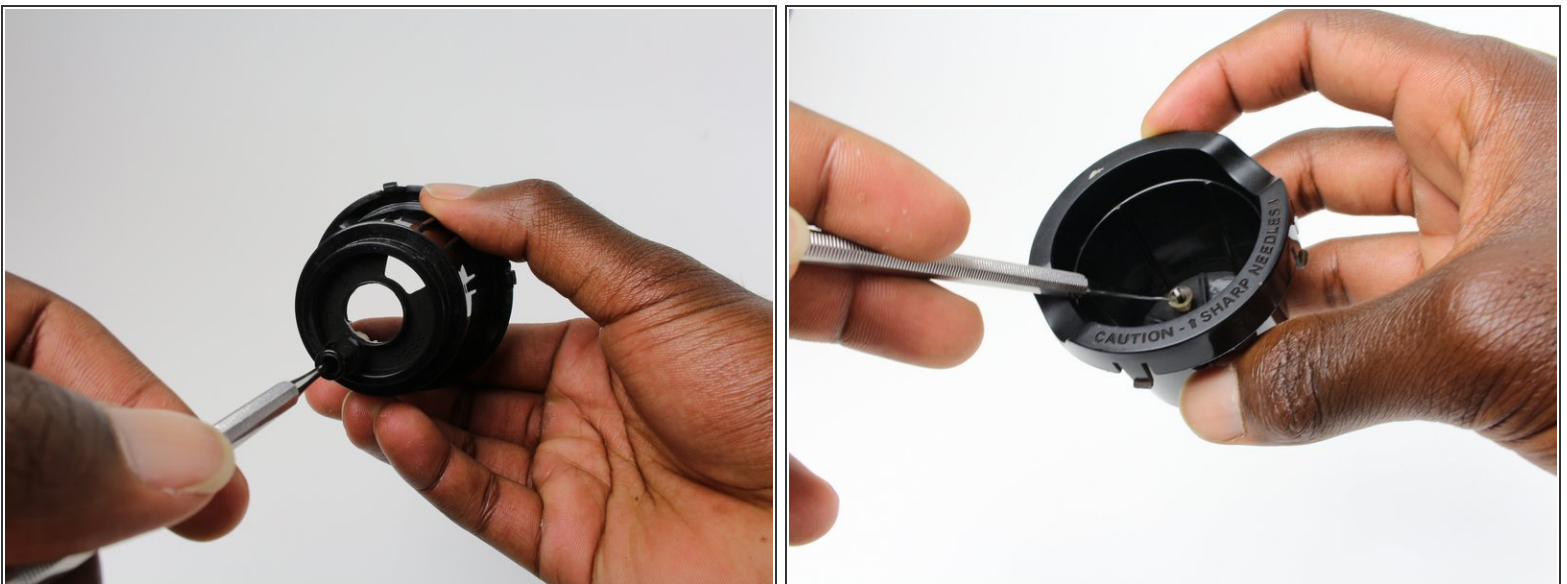
- Remove K-Cup Pack Holder Assembly by pinching the left and right sides to release clamp. Wiggle slightly to remove

### Step 3



- Pull and snap apart the funnel from the K-Cup Pack Holder (If this is the first time separating the Pack Holder Assembly, more force may be required)

### Step 4



- Insert a paperclip or other small, sharp object into the bottom of the K-Cup Pack Holder needle compartment to clear out any debris. If debris is too dry and compact, perform this step under running water to loosen the debris
- Flip K-Cup Pack Holder and repeat



## Step 5



- With the Lid still open, locate the Puncture Needle. Insert a paperclip or other small sharp object into the Puncture Needle Holes to remove any debris trapped inside

To reassemble your device, follow these instructions in reverse order.

Once reassembled, run the brewer once or twice with just water to cleanse the system.