



SONY ZS-BTG900 Radio Adapter Replacement

This guide will show you how to replace the radio adapter on the back of your Sony ZS-BTG 900.

Written By: Alfredo Rodriguez



INTRODUCTION

Before attempting this guide, be sure you check out the device [troubleshooting page](#) to see if you can get your radio working that way.

If not, we are going to go ahead and open the device as you will need to swap out your radio adapter for a working one.



TOOLS:

- [iFixit Opening Tools](#) (1)
 - [Phillips #2 Screwdriver](#) (1)
-

Step 1 — SONY ZS-BTG900 Disassembly



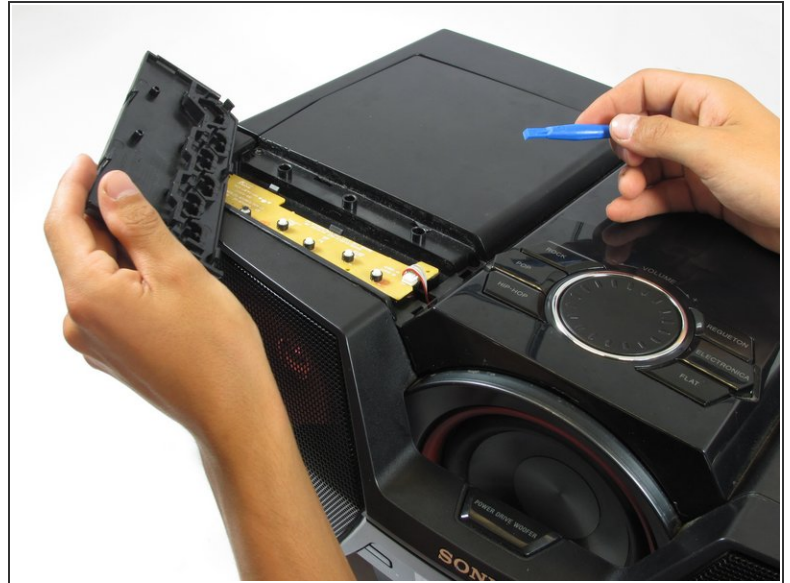
- Lift up the handle to reveal the screws.
- Use your Phillips #2 screwdriver to remove the eight 1/2 inch screws.

Step 2



- Flip your device over.
- Use your Phillips #2 screwdriver to remove the six 3/4inch screws.
- ⓘ In removing the screws within the two holes on the back of the device, you may want to use your shaft extension to provide extra torque as they may be very tight.

Step 3



- Flip your device back over to access the top of the device.
- Use your plastic opening tool to pry up and remove the panel on the top, left hand side of the device.
- ⓘ This will reveal two additional screws.

Step 4



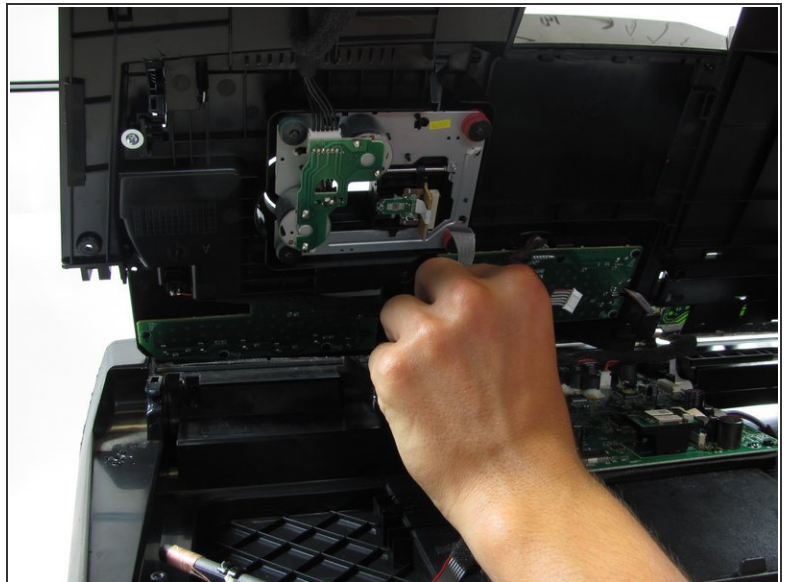
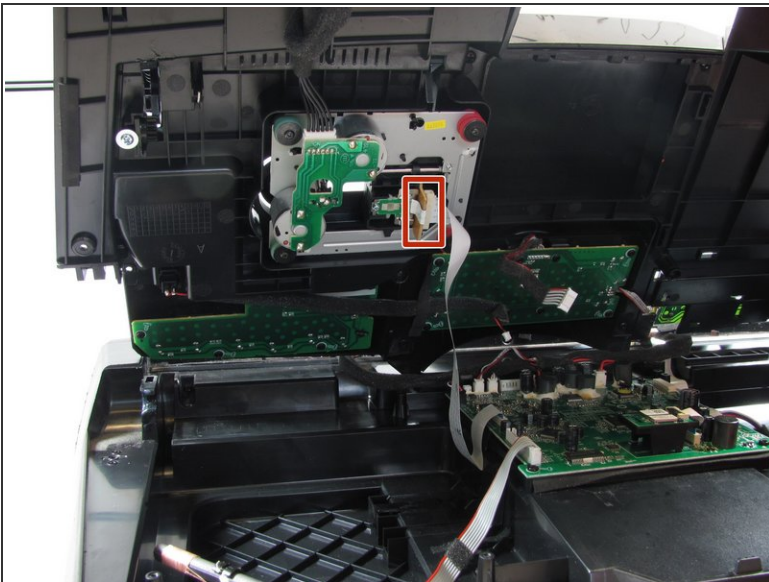
- Use your Phillips #2 screwdriver to remove the two 1/2 inch screws underneath the now-removed panels.

Step 5



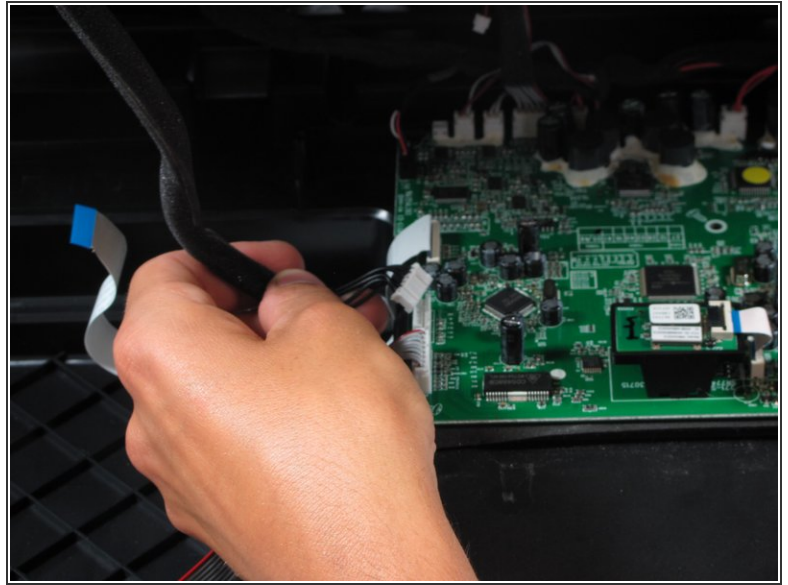
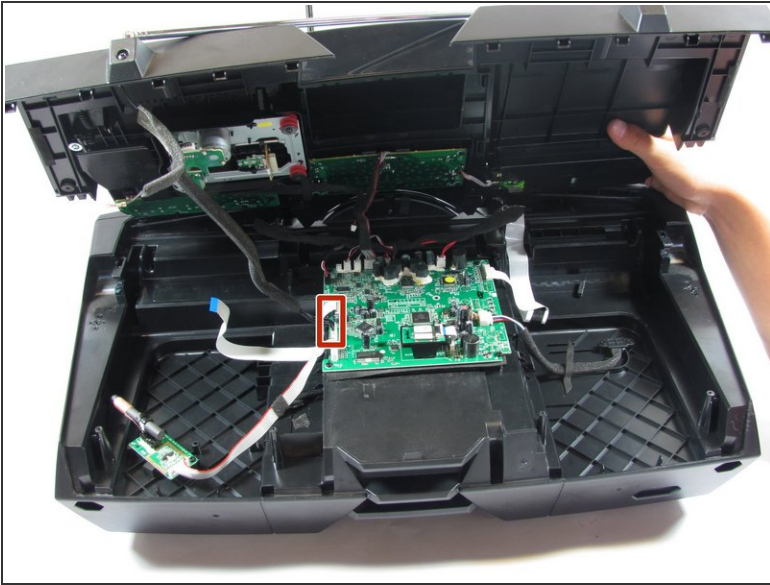
- Lift off the top, beginning from the back of the device.
- ⓘ Take care when lifting the top portion as there are many wires connected to the inside of the device and you do not want to disconnect these just yet.

Step 6



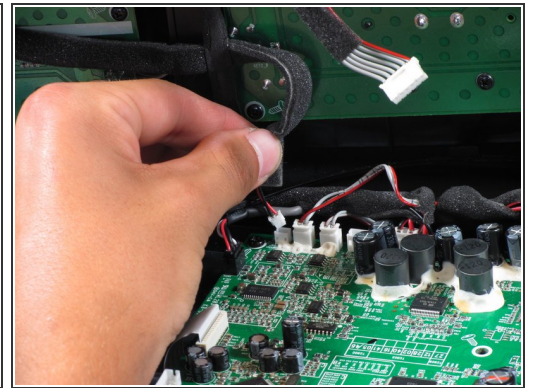
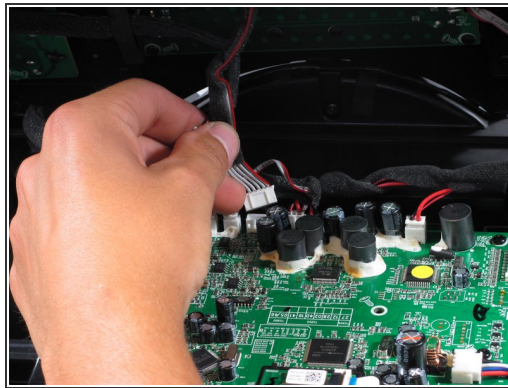
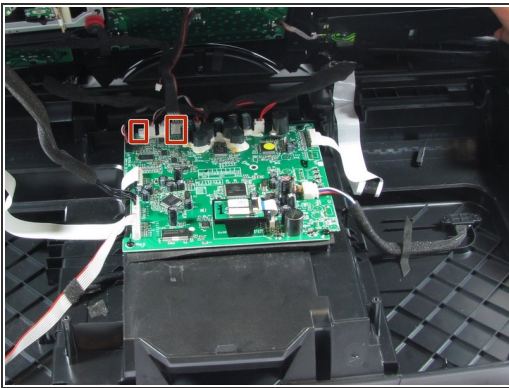
- Disconnect the CD drive ribbon cable from the top of the device.

Step 7



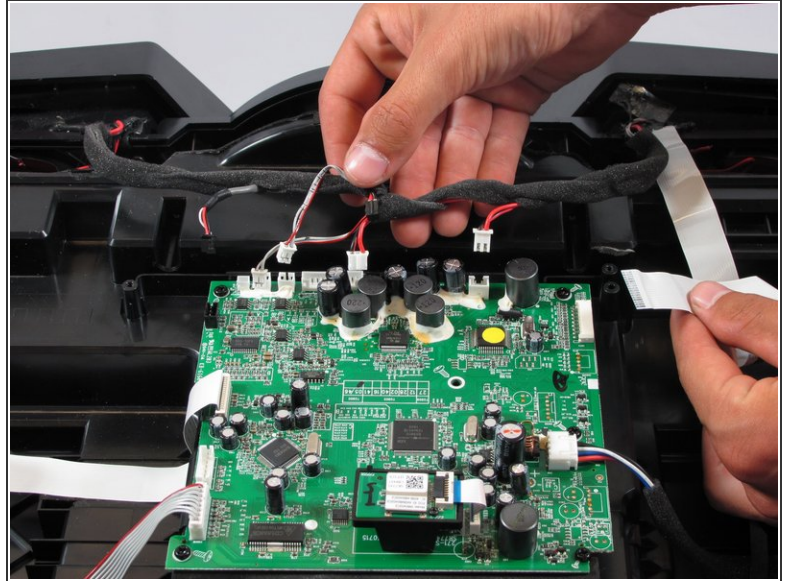
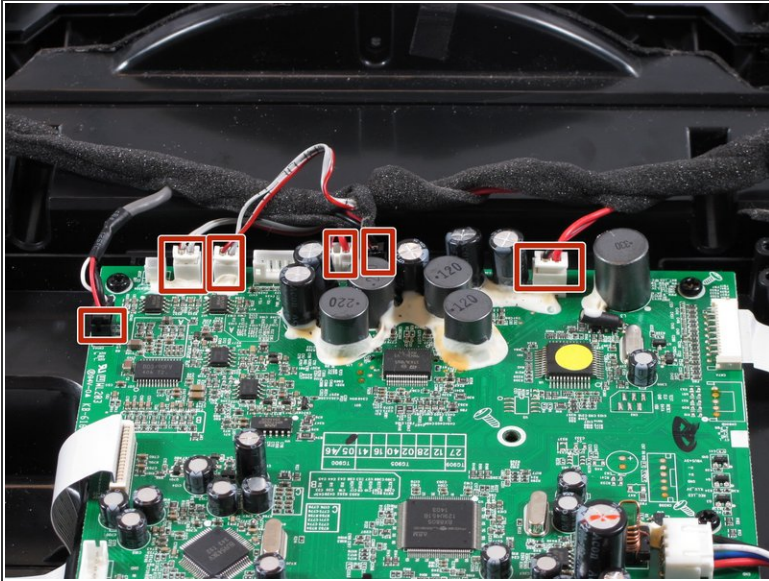
- Disconnect the antenna cables.

Step 8



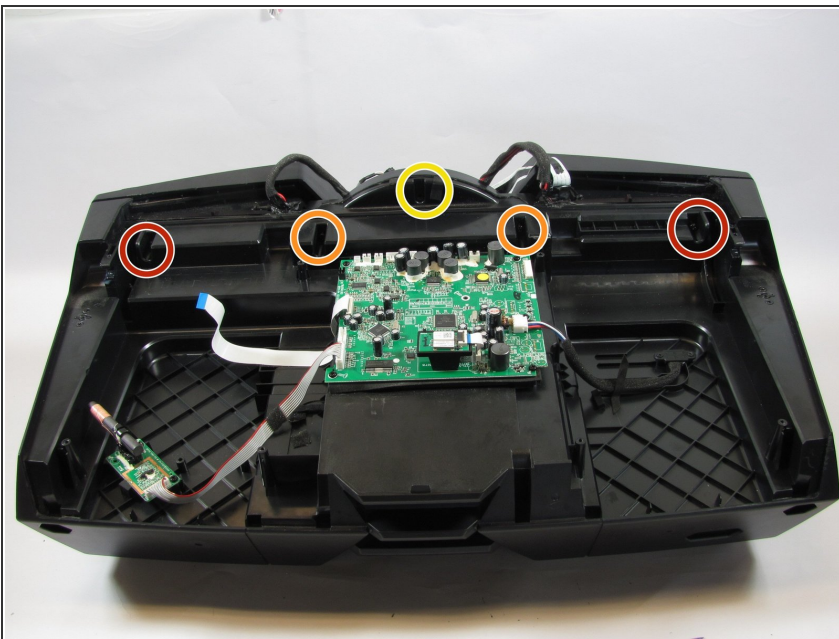
- Disconnect the remaining cables from the motherboard.

Step 9



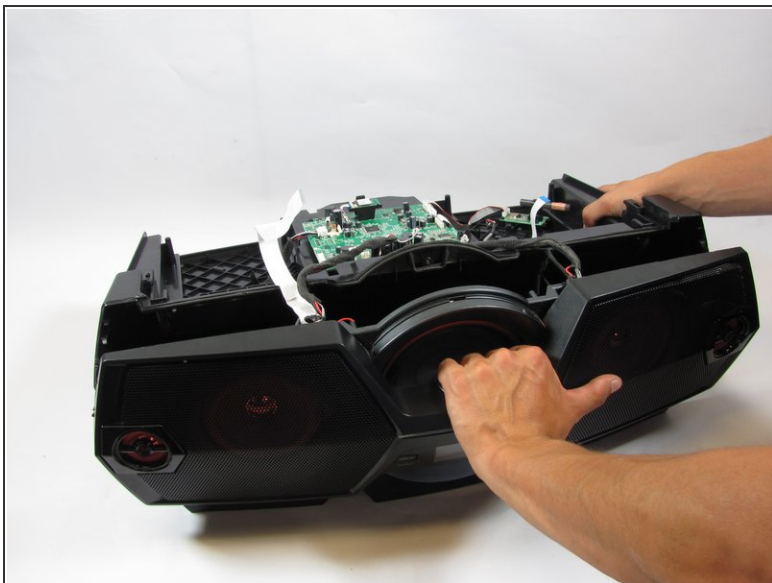
- Once you have removed the top, we will begin removing the front of the device.
- Begin by disconnecting the 6 cables that lead from the front of the device to the motherboard.

Step 10



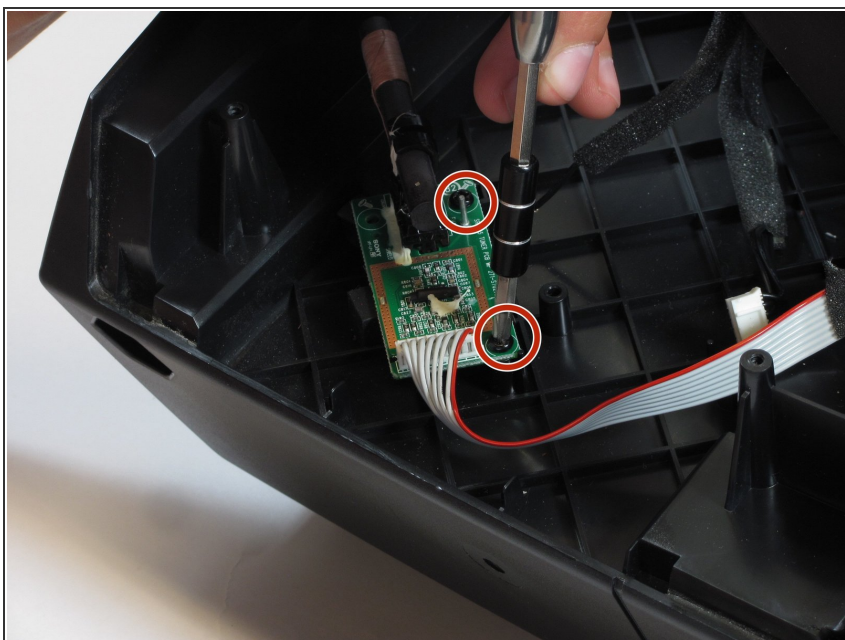
- Use your Philips #2 screwdriver to remove the two 1 inch screws on the outermost part of the device.
- Use your Philips #2 screwdriver to remove the two 3/4 inch screws on the outermost part of the device.
- Use your Philips #2 screwdriver to remove the one 5/6 inch screw on the middle part of the device.

Step 11



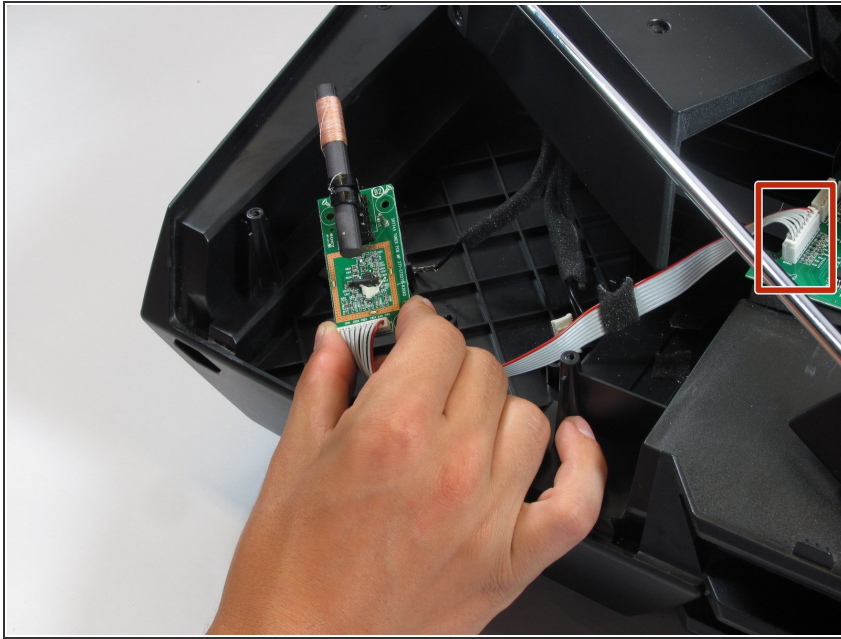
- Firmly pull off the front of device.
- ❗ There will be a small amount of black glue. You can simply ignore this, and continue to pull, or use a sharp edge to cut the glue once you've revealed it.

Step 12 — Radio Adapter



- Use a Phillips #2 screwdriver to unscrew the two 1/2 inch screws

Step 13



- Lift and replace.
- Disconnect white cable from motherboard.

To reassemble your device, follow these instructions in reverse order.