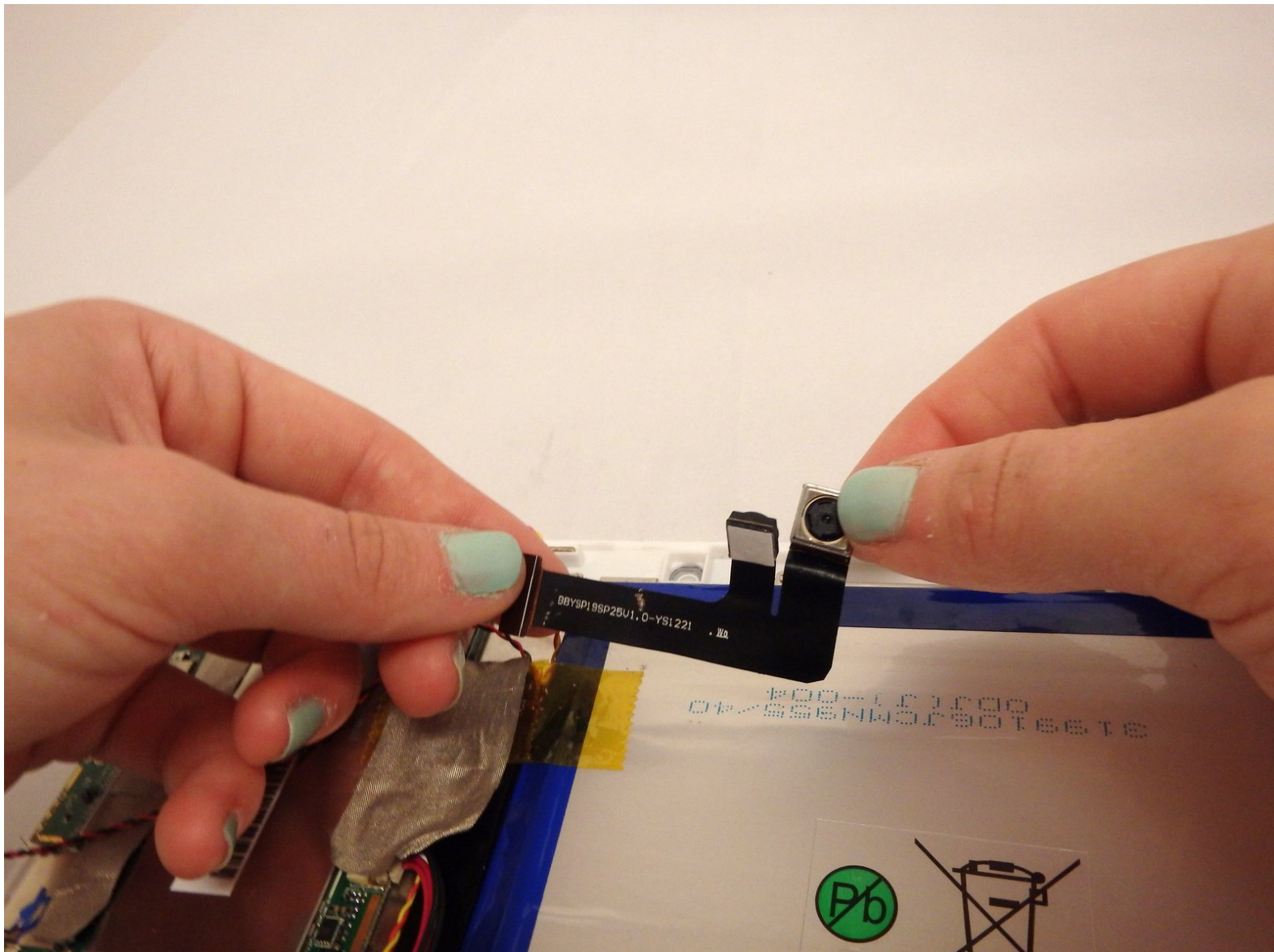




# Insignia Flex 8 NS-P16AT08 Cameras Replacement

This guide will show you how to replace the cameras in the Insignia Flex 8 tablet.

Written By: Emily Guidinger



# INTRODUCTION

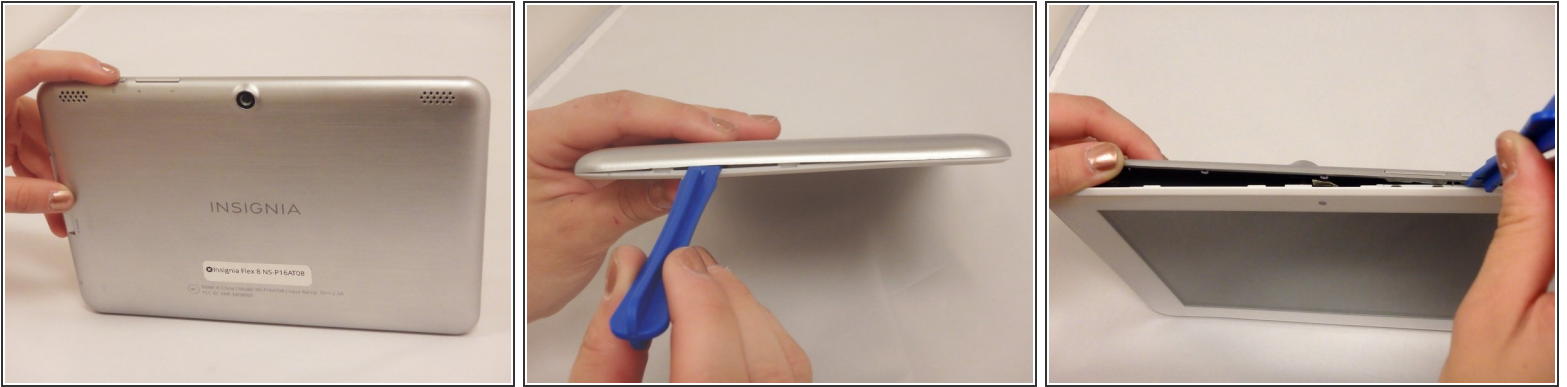
This replacement guide will help you to remove and replace the cameras in your Insignia Flex 8 tablet. If your front or back-facing cameras are not working, or the photos are blurry, replacing the camera(s) may be the best way to fix this problem.




## TOOLS:

- [iFixit Opening Tools](#) (1)
  - [Spudger](#) (1)
-

## Step 1 — Back Casing



 Make sure device is powered off.

- Wedge the plastic opening tool anywhere in the seam between the back casing and screen.
  - Slide the plastic opening tool along the sides and corners of the seam of the device while it separates from the screen.
-  You will hear the popping sound of the plastic connections separating from the device.

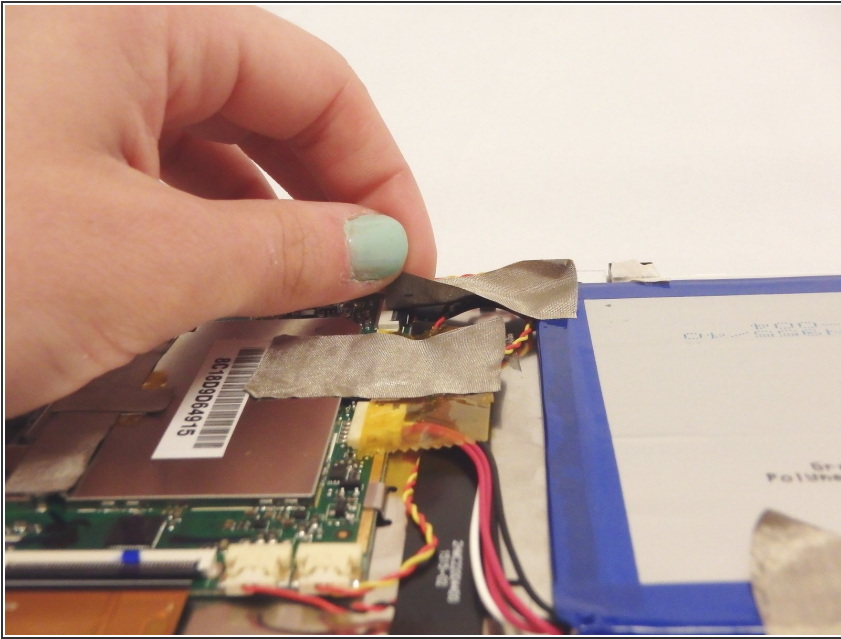
## Step 2



- Lift the back casing away from the screen.
- Set casing aside.

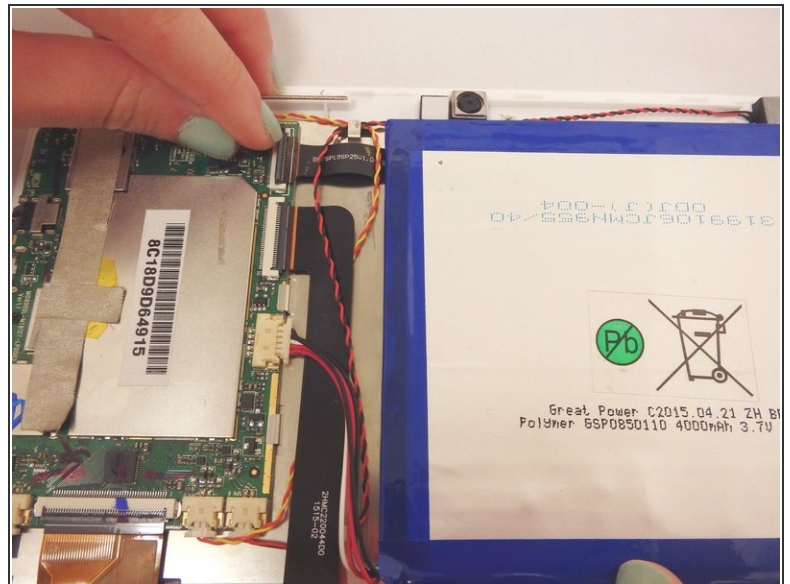
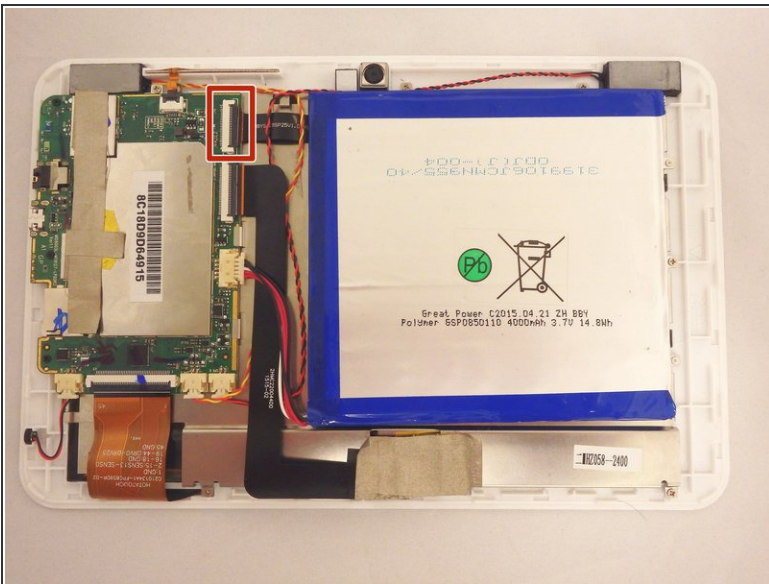


## Step 3 — Cameras



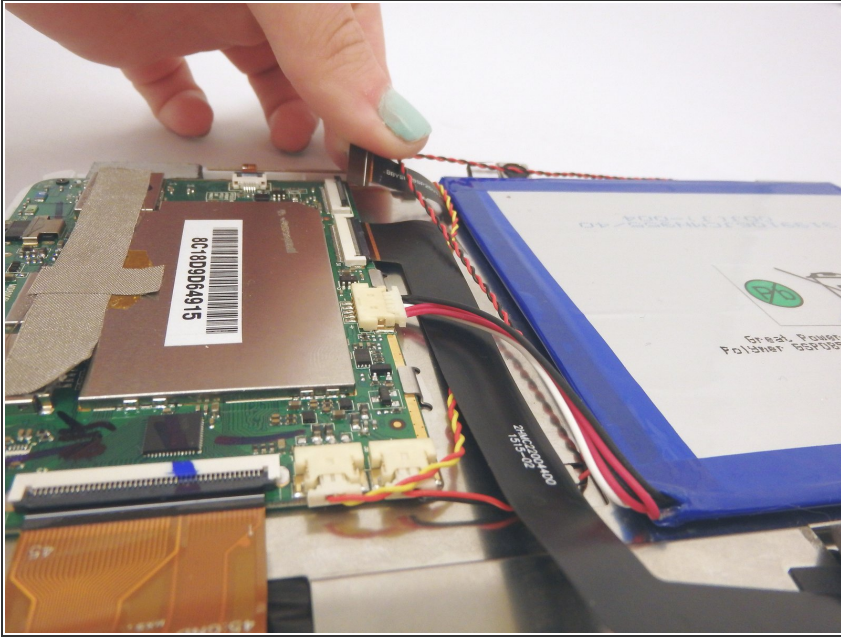
- Gently peel all of the tape that is covering the cable connections going to and from the cameras. Set the tape aside for later reassembly.

## Step 4



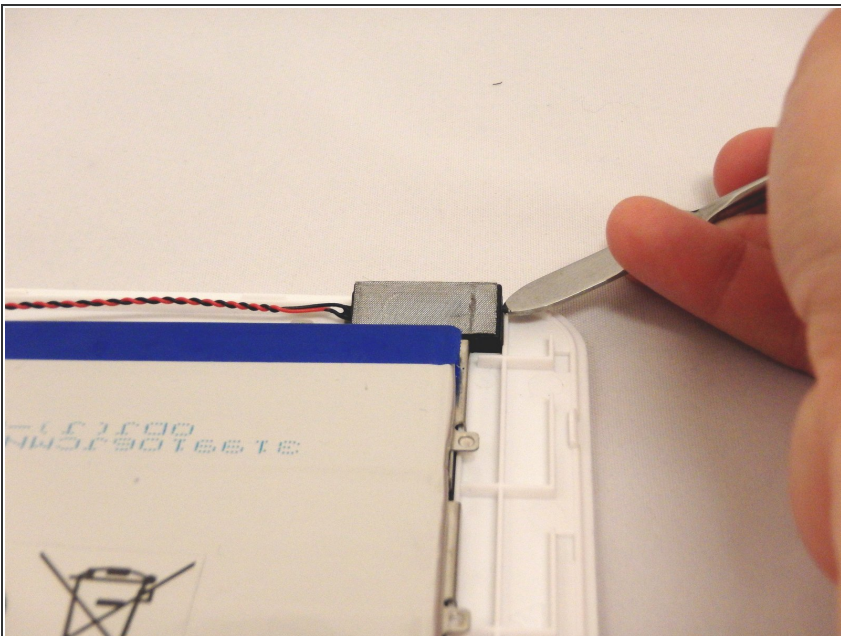
- Locate camera ribbon connector.
- Using finger flip up black flap of camera ribbon connector.

## Step 5



- Gently pull camera connector ribbon by hand until it separates from connector.

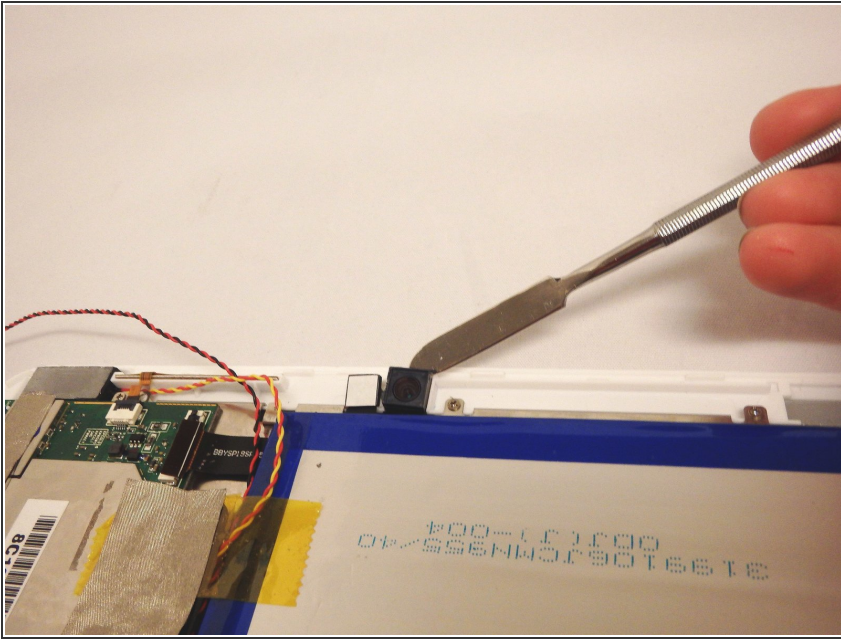
## Step 6



- Using metal spudger tool, gently pry right speaker away from adhesive.
- ⚠ Always use a nylon spudger or plastic opening tool before a metal spudger. Metal spudgers are great for serious prying power but can damage your device if used incorrectly.
- Move right speaker to left side of device so you can freely access the camera ribbon.

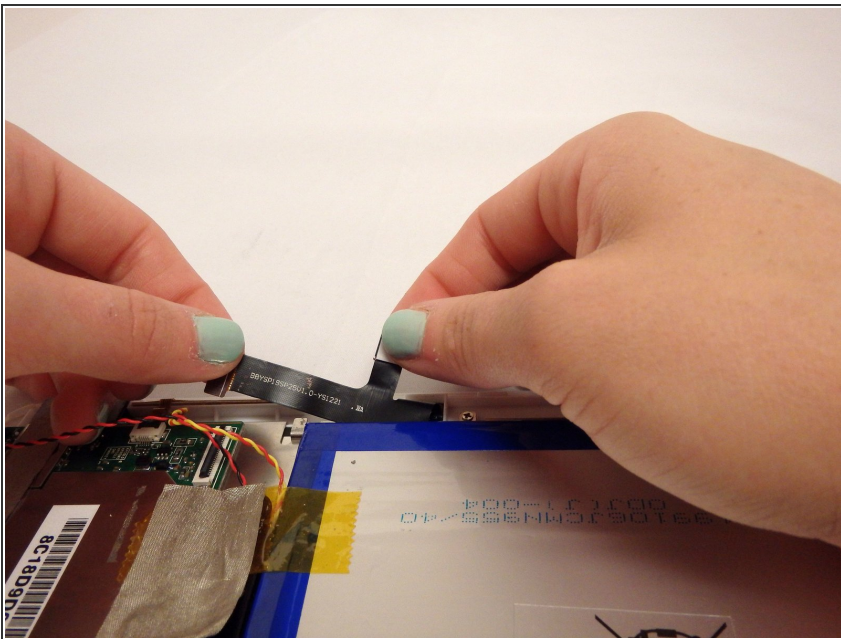


## Step 7



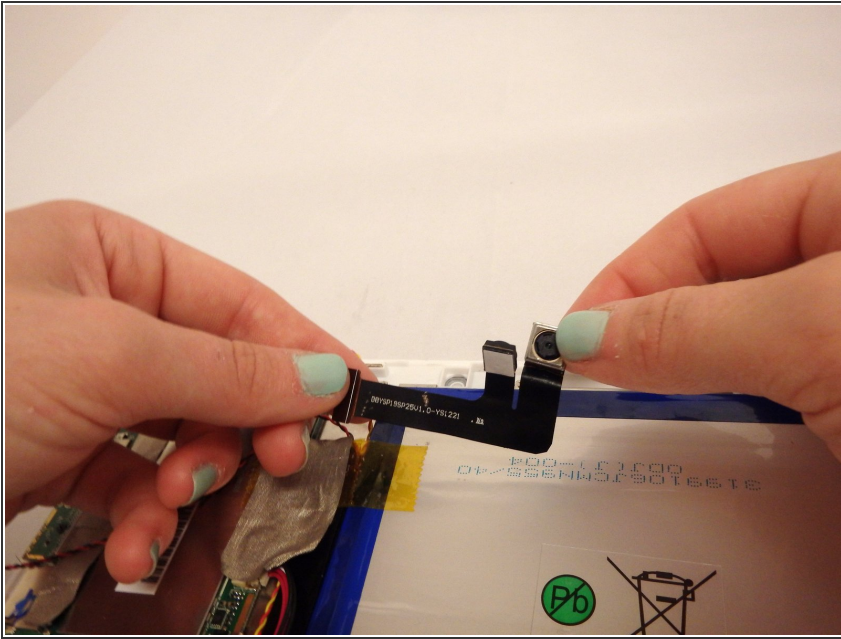
- Using metal spudger tool, gently pry the rear-facing camera from the adhesive.

## Step 8



- Lift up connector ribbon that is attached to the cameras.
- Slide cameras and connector ribbon out from underneath the speaker cords and battery.

## Step 9



- Remove connector ribbon and cameras from device casing.

To reassemble your device, follow these instructions in reverse order.