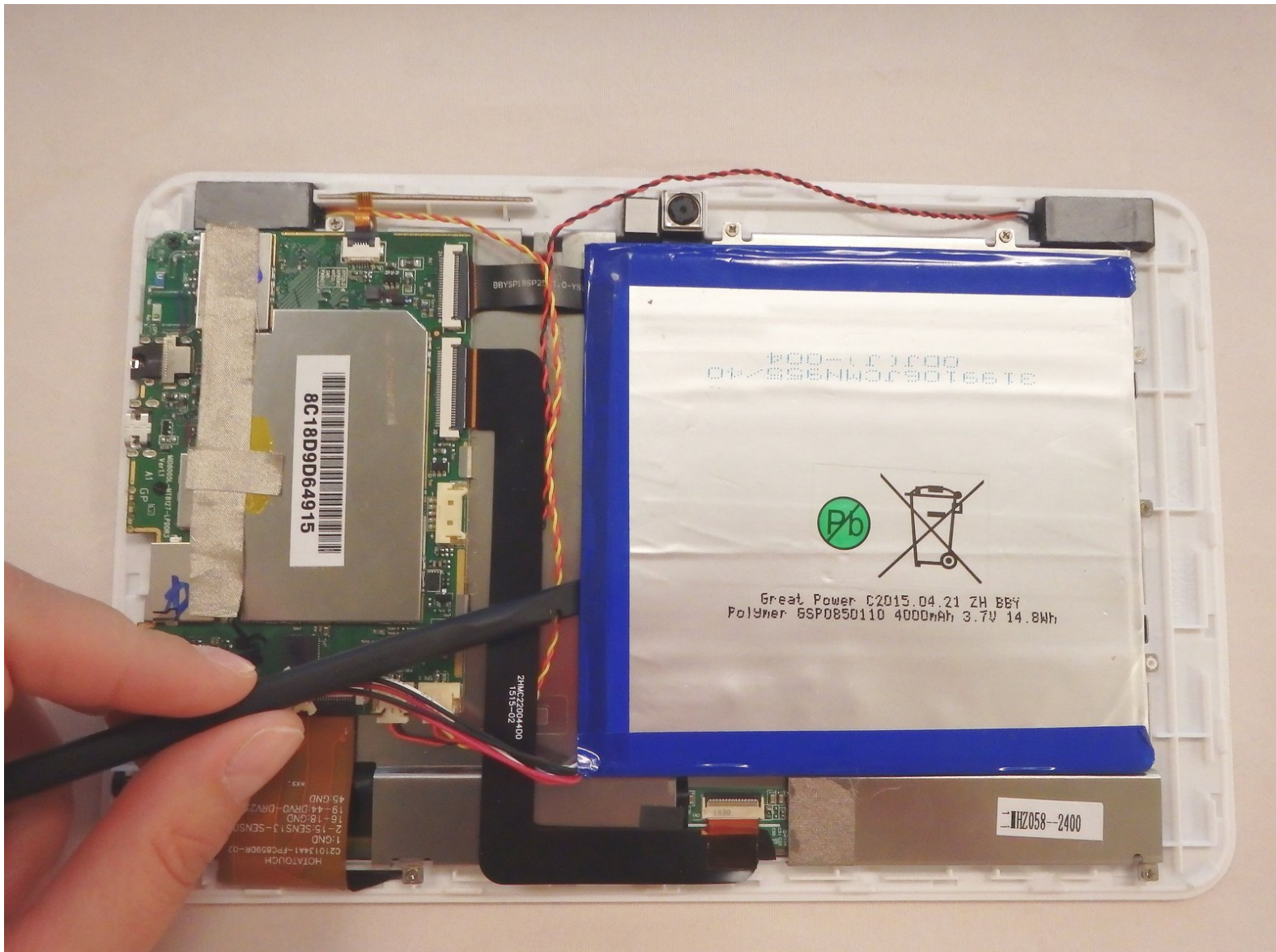




Insignia Flex 8 NS-P16AT08 Battery Replacement

This guide will show you how to remove the battery from your Insignia Flex 8 tablet.

Written By: Emily Guidinger



INTRODUCTION

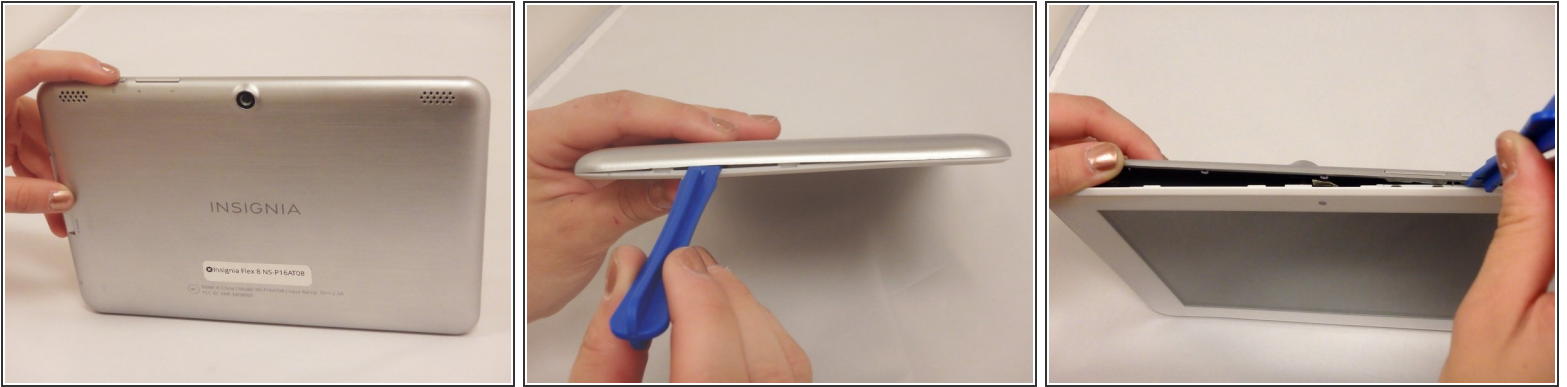
If your battery is dying too quickly or it is faulty, this guide will help you. Use caution, a punctured battery could be extremely hazardous.




TOOLS:

- [iFixit Opening Tools](#) (1)
 - [Spudger](#) (1)
-

Step 1 — Back Casing



 Make sure device is powered off.

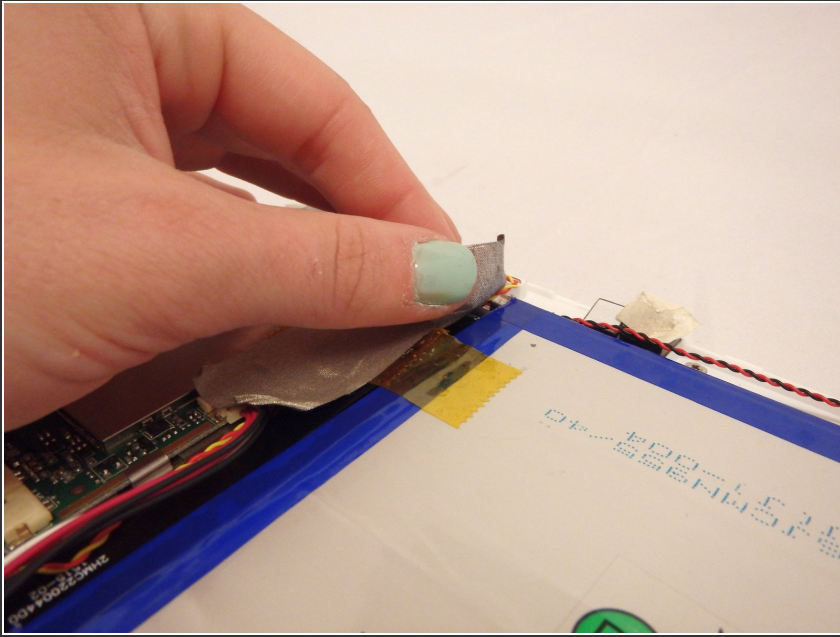
- Wedge the plastic opening tool anywhere in the seam between the back casing and screen.
 - Slide the plastic opening tool along the sides and corners of the seam of the device while it separates from the screen.
-  You will hear the popping sound of the plastic connections separating from the device.

Step 2



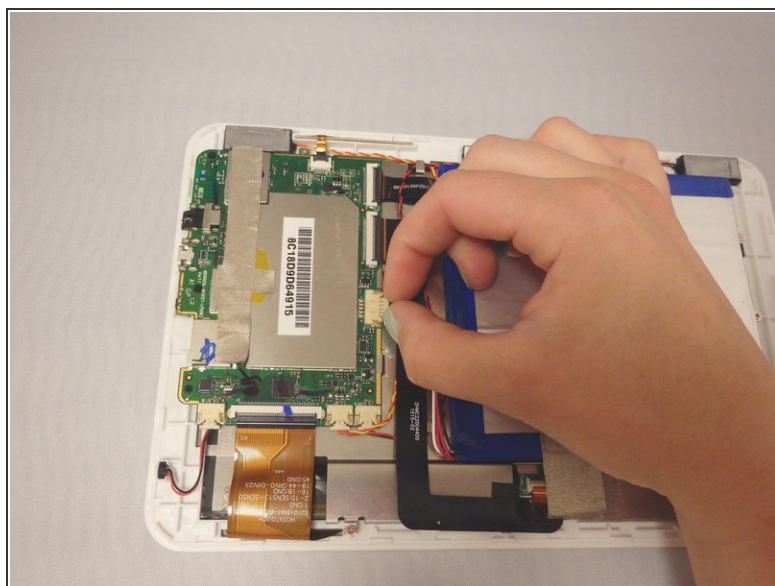
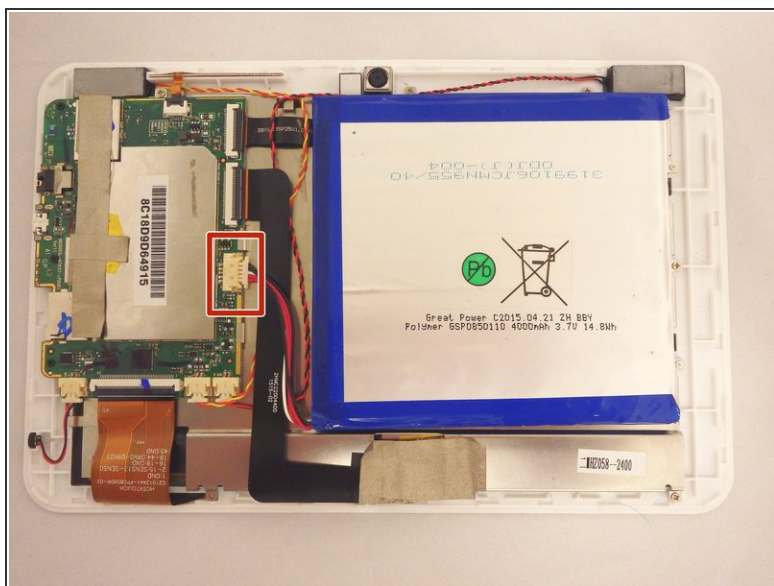
- Lift the back casing away from the screen.
- Set casing aside.

Step 3 — Battery



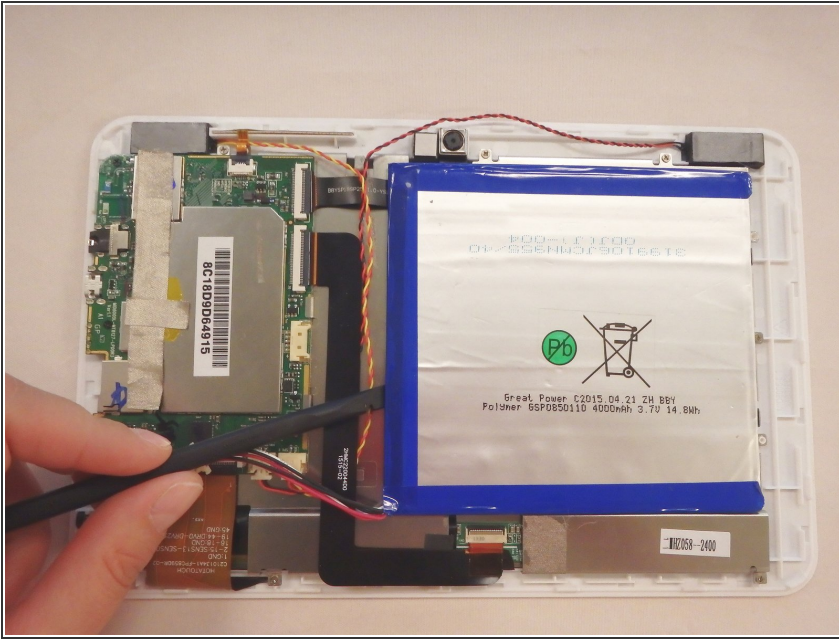
- Gently peel the tape that is covering the cable connections going to and from the battery and set tape aside.
- ⓘ This will expose the cable connections in preparation for disconnecting the cables and battery.

Step 4



- Locate battery cable connection.
- Pull gently on cable that connects the battery to the motherboard.
- ⓘ Cable will stay attached to battery but be removed from motherboard.
- ⓘ If pulling gently doesn't loosen cable, wiggle connection while pulling gently.

Step 5



- Slide the nylon spudger gently underneath the battery.
- Using the nylon spudger, gently pry battery from adhesive on metal base.
- ⚠ Do not puncture or bend battery.
- Working around the battery, pry up all the sides to remove the battery from the metal base.
- ⓘ The adhesive is very strong. Separating the battery from the metal base may be difficult.

To reassemble your device, follow these instructions in reverse order.