



Acer Aspire One d270-1865 Hard Drive Replacement

Hard drive error? Can't load windows? You may need to replace your hard drive to solve these problems.

Written By: Jonathan Witherspoon



INTRODUCTION

This is a guide that will help the user through the process of replacing a dying or failed hard drive. The problems this guide should address include but are not limited to "hard drive clicking noise," "Windows failed to load or "hard drive error."



TOOLS:

- [iFixit Opening Tools](#) (1)
 - [Anti-Static Wrist Strap](#) (1)
 - [Phillips #1 Screwdriver](#) (1)
-

Step 1 — Battery



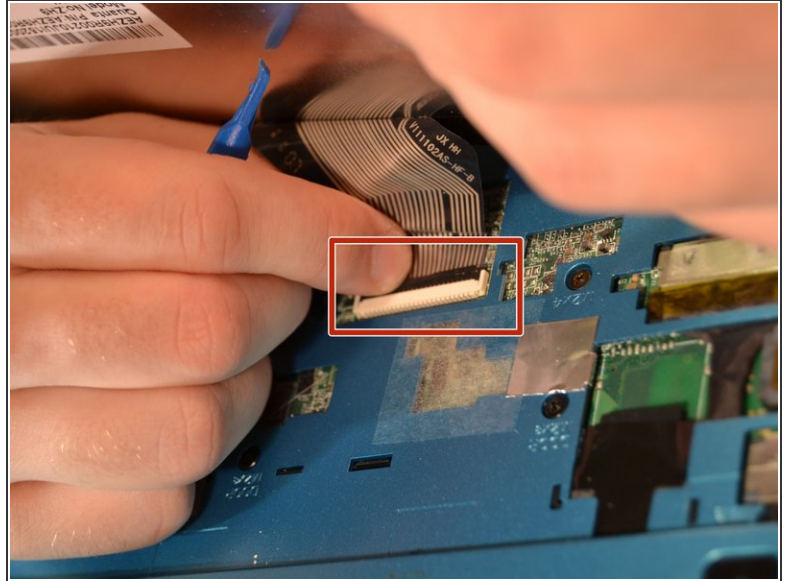
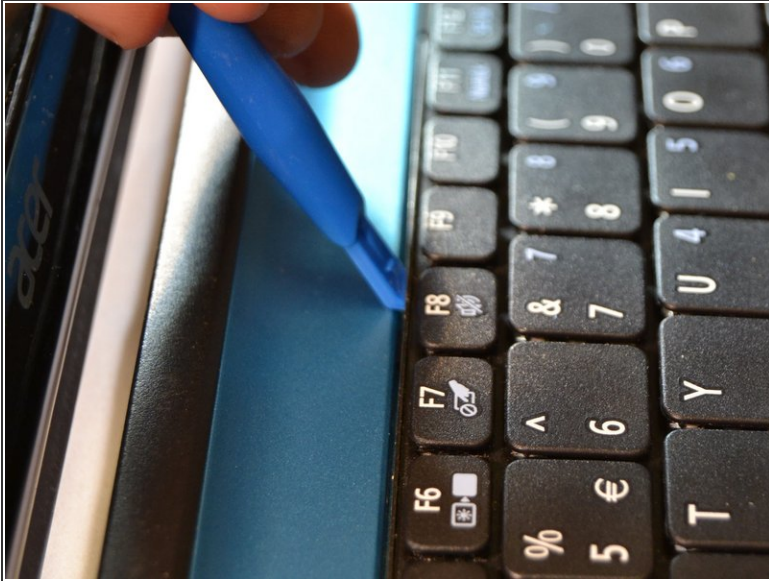
- Put on an anti-static wrist band, attaching the end onto a large piece of metal.
- Make sure the laptop is unplugged from its charging cord.
- Flip the laptop over to view the underside.
- Slide the right battery lock/unlock button to unlock, sliding the tab outward to unlock.
- At the same time, slide the left tab outwards while placing thumb on the grip strips of the battery and pull the battery outwards until it slides out.

Step 2 — Hard Drive



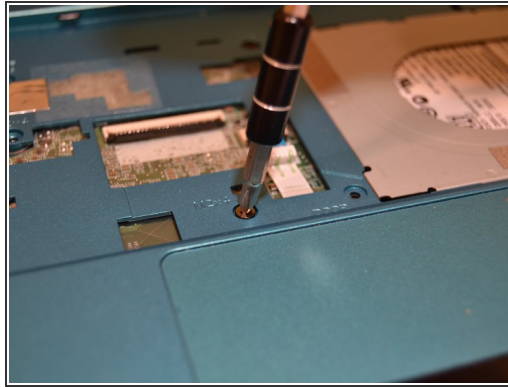
- Flip the device over so bottom is exposed.
- Remove the three screws at the front edge of the device using a Phillips #1 screwdriver.

Step 3



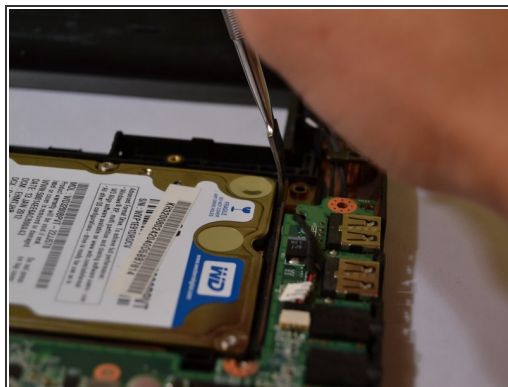
- Flip the device so it is front-side up.
- Lift the screen open.
- Insert the plastic opening tool above the F8 key.
 - ⚠ Do not break the F8 key.
- Pull towards yourself in an upward motion to push the keyboard up.
- Disconnect the ribbon cables attached to bottom of keyboard.
 - ⓘ Lift the black tab on top of ribbon.

Step 4



- Unscrew the screws holding the blue casing to the motherboard using a Phillips #1 screwbit:
 - Eleven 2mm Phillips #1 screws
 - Three 2mm Phillips #1 screws
- Use the plastic opening tool on the left side of device to pop off blue casing and slide along the edge to loosen the casing.
- Separate the blue casing from the rest of the device.

Step 5



- Use the plastic opening tool to lift the back right corner of the hard drive.
- ⚠ Using a metal spudger on internal components can potentially damage your device.
- With the hard drive in your hand, use your thumb and index finger to grasp the power/data cable.
- Pull the power/data cable away from the drive to unplug the cable.

To reassemble your device, follow these instructions in reverse order.