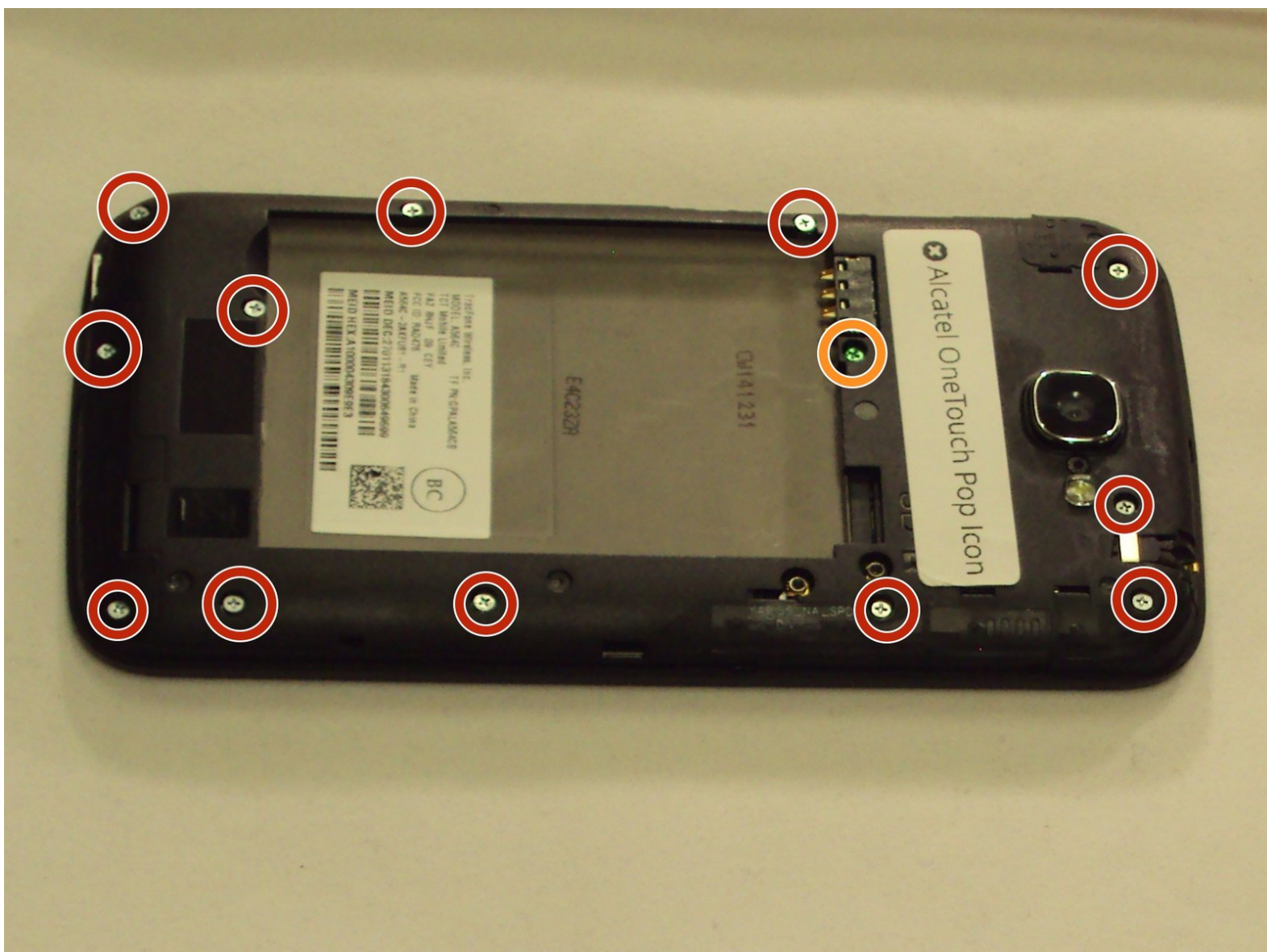




# Alcatel OneTouch Pop Icon Interior Back Panel Replacement

Prerequisite guide for Back Camera, Headphone Jack and Control buttons

Written By: John Halsey



---

## INTRODUCTION

The interior back panel is required to gain access to most of the components of the phone. It isn't hard but you will need to be careful when removing the screws because they are small and easy to loose.



### TOOLS:

- [iFixit Opening Tools](#) (1)
  - [JIS Driver Set](#) (1)
-

## Step 1 — Battery



- Shut down the device
- Flip the phone so that the screen is facing the surface you are working on
- ⚠ Aggressive prying may result in damaging the back panel or the internal contents of the phone.
- Use the plastic opening tool to gently pry off the back panel. There is a small notch in the bottom left corner of the phone that you can use for increased leverage.

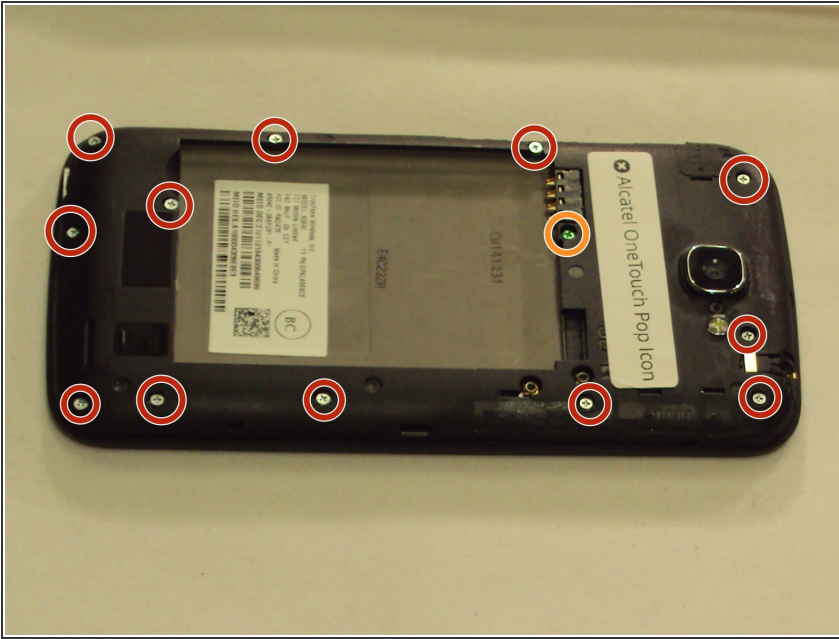
## Step 2



- Use your thumbnail to lift the battery from the phone.

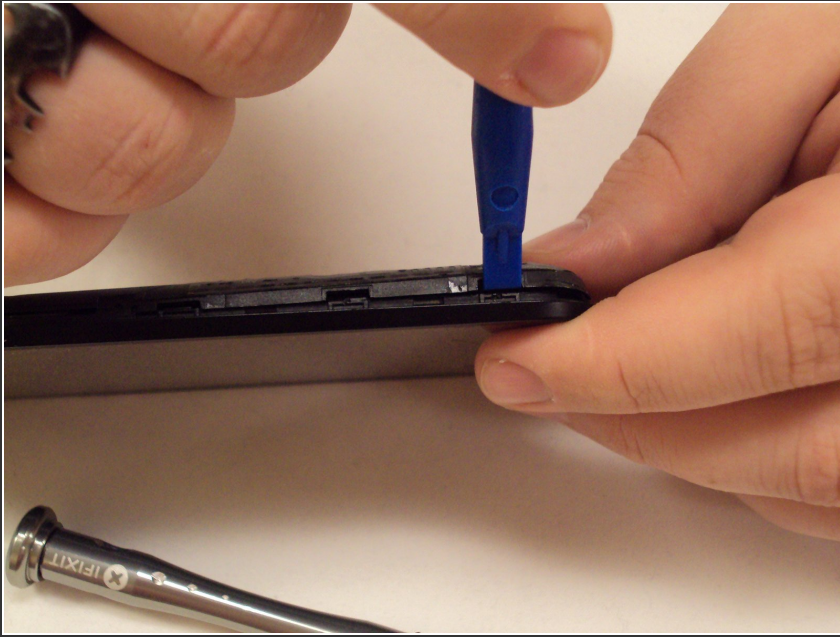


## Step 3 — Interior Back Panel



- Using the J000 Phillips screwdriver, remove the twelve silver 3mm screws.
- Using the J000 Phillips screwdriver, remove the one green 3mm screw.

## Step 4



- With the screen facing you and the front facing camera to your right, insert the plastic opening tool between the screen and the interior back panel and gently pry it off.
- ⓘ Make sure all of the clips come undone when you pry the seam loose.

To reassemble your device, follow these instructions in reverse order.