



# Nikon Coolpix L840 Flash Replacement

This guide shows how to access the camera's flash.

Written By: Chanelle Mosquera



---

# INTRODUCTION

This guide details the steps required to access and replace the camera's flash.



## TOOLS:

- [Phillips #000 Screwdriver](#) (1)
-

## Step 1 — Flash



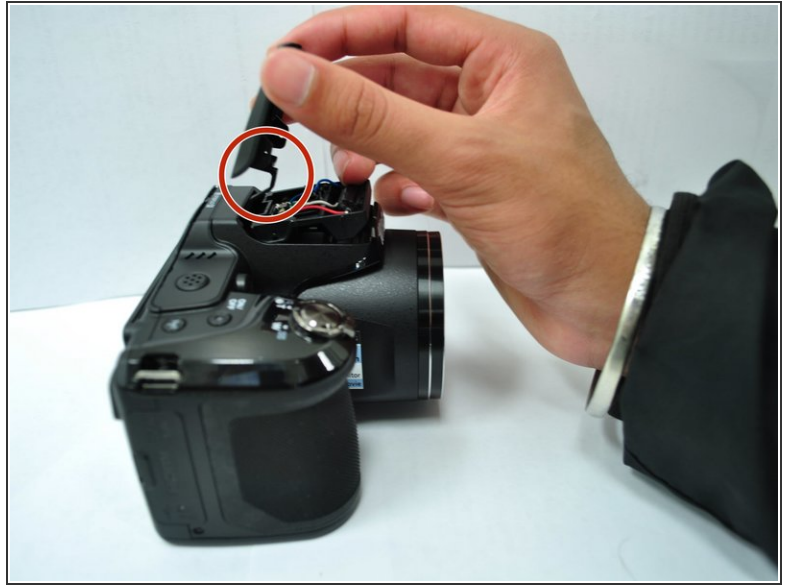
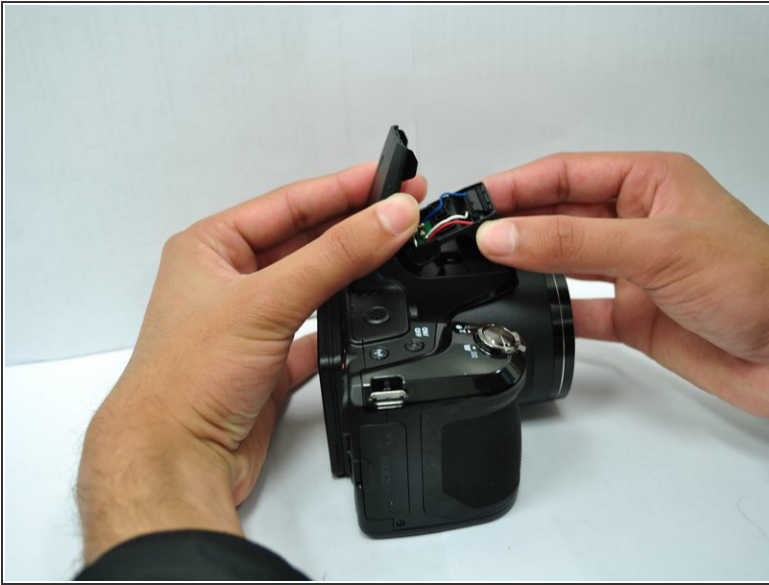
- Press the flash button on the side of the camera to allow the flash to spring upward.

## Step 2



- Unscrew the two black, 4mm screws with a Philips 000. (There should be one screw on each side of the camera).

### Step 3



- Remove the back case of the flash by lifting it off of the flash.
- The back half cover has a little tail that keeps it locked in place. Wiggling the back cover around may help unhook the tail.

### Step 4



- Push the flash inward to pop the flash out of its front case. Since the back case is removed, the flash should pop out from the back.

## Step 5



- The see-through protective flash covering is stuck on to the flash with thin, double-sided tape. Pull apart the two components to access the flash.

To reassemble your device, follow these instructions in reverse order.