



PowerLead Puto PLD003 Lens Replacement

This guide shows you how to replace the PowerLead Puto PLD003 Lens.

Written By: Justin Tew



INTRODUCTION

This guide shows how to remove the side panel from the camera, how to remove the back panel, and how to replace the lens.



TOOLS:

- [Phillips #1 Screwdriver](#) (1)



PARTS:

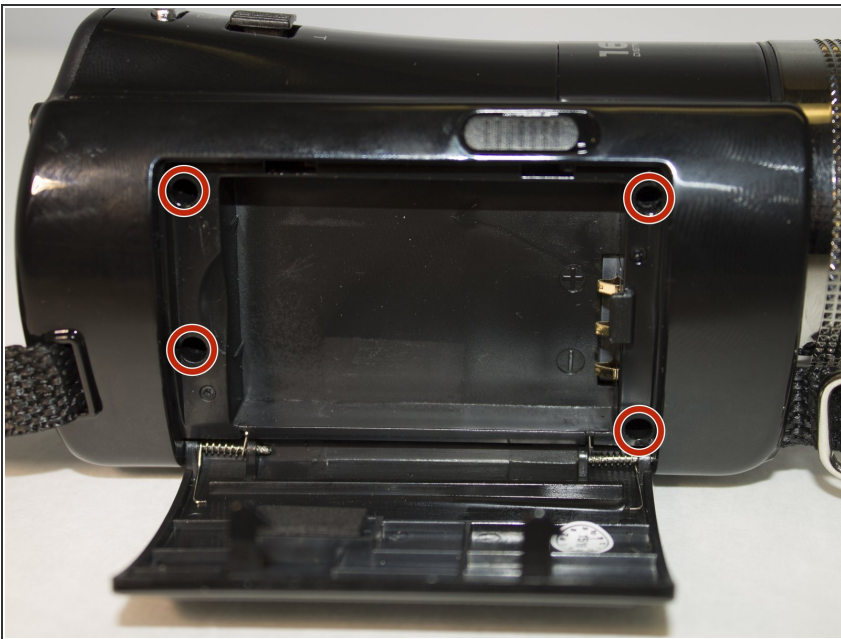
- [Replacement Lens](#) (1)

Step 1 — Side Panel



- Slide the battery eject button open to release the battery door.

Step 2



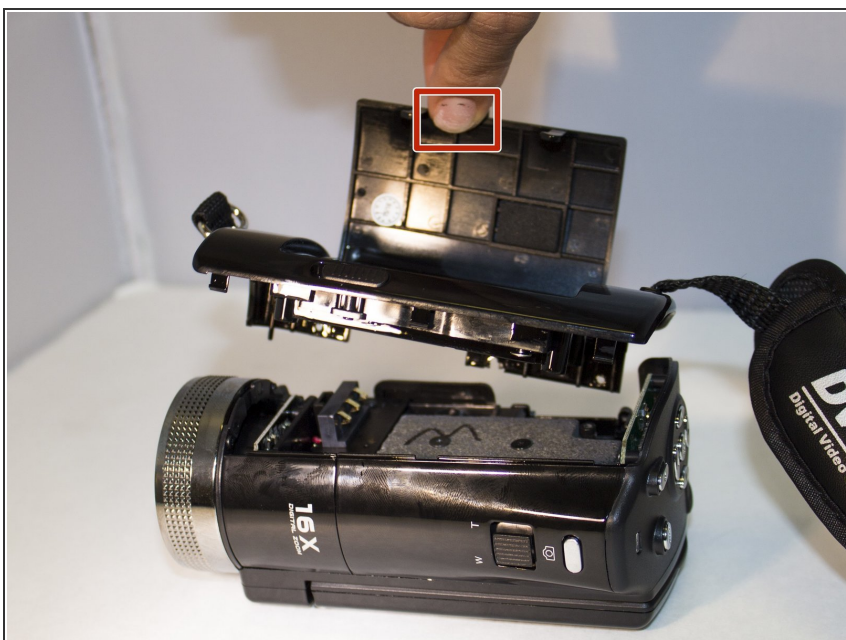
- With the battery door open, carefully remove all four 5 mm Phillips #1 screws.

Step 3



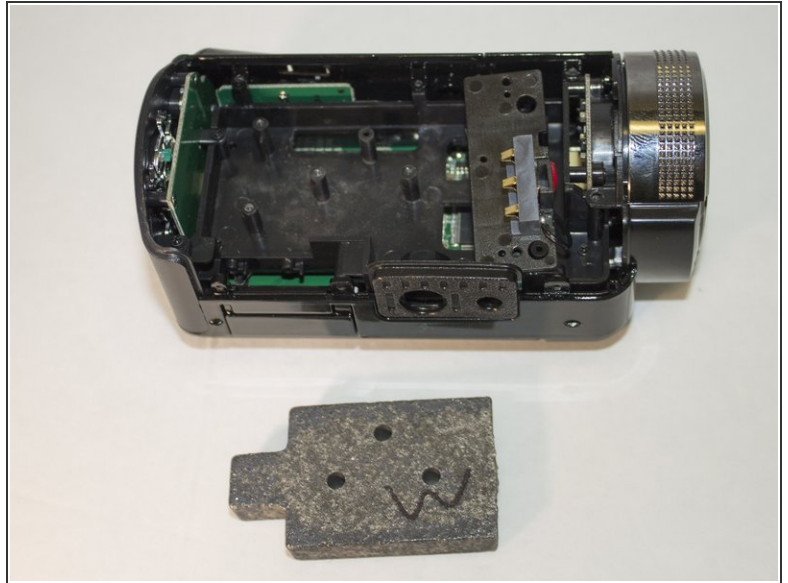
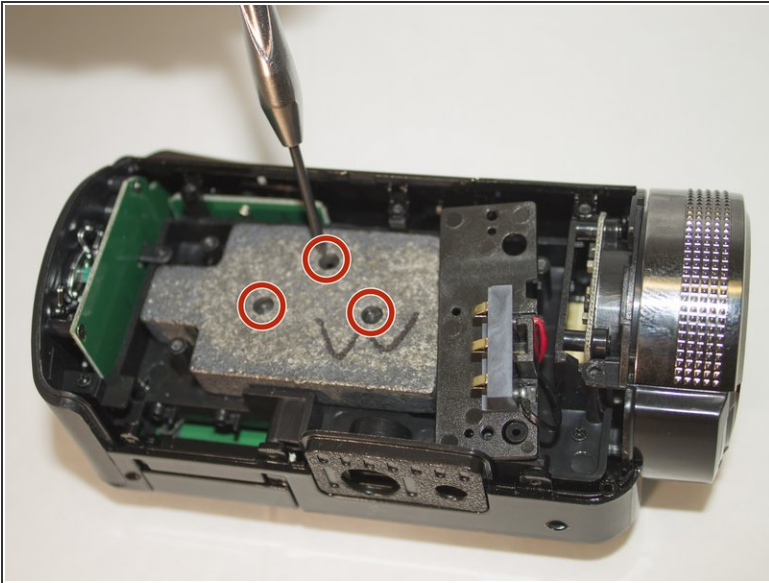
- Rotate the camera so that the underside is facing up.
- Remove the four 5 mm Phillips #1 screws.

Step 4



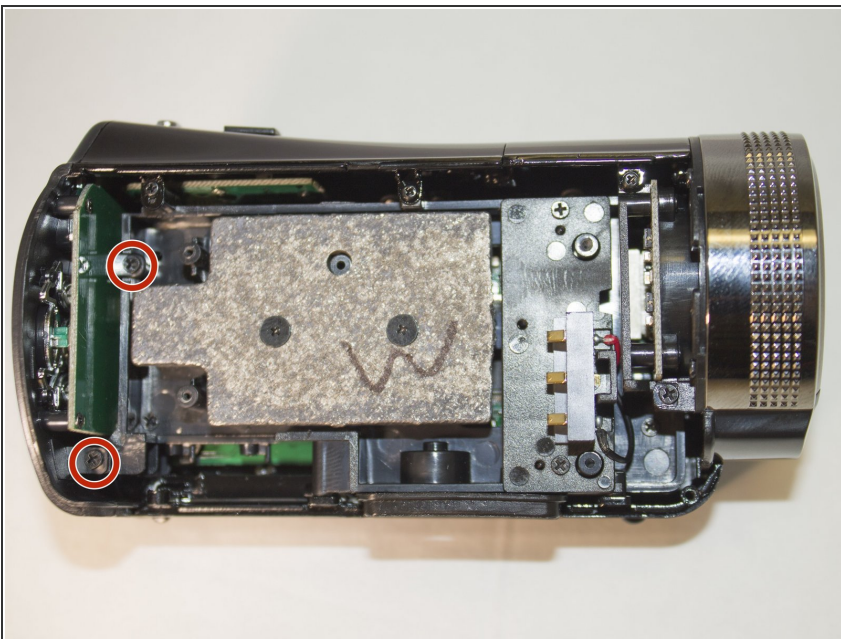
- Place the camera on a flat surface, with its underside facing you.
- Gently pull up on the side panel to remove it from the camera.

Step 5 — Lens



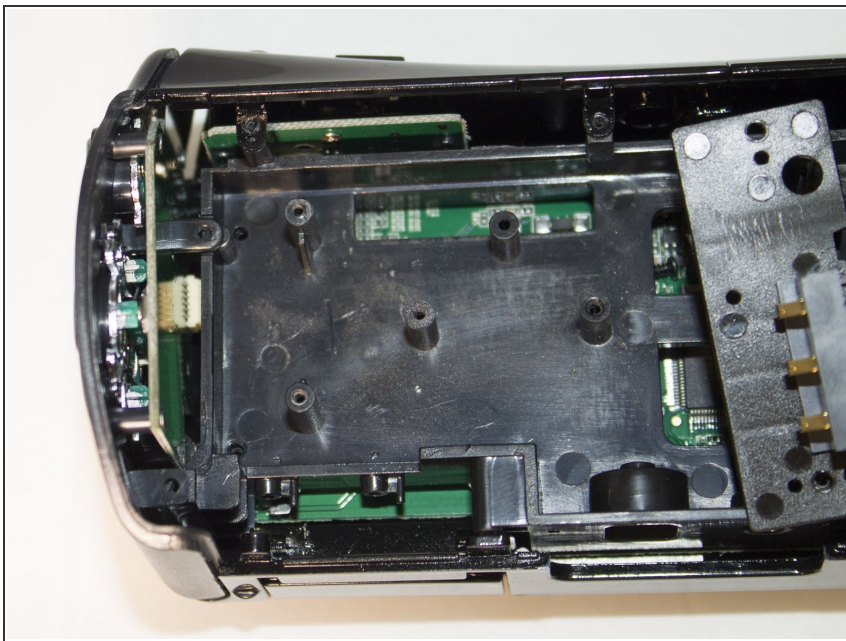
- Remove the three 4 mm Phillips #1 screws holding the weight.
- Remove the weight.

Step 6



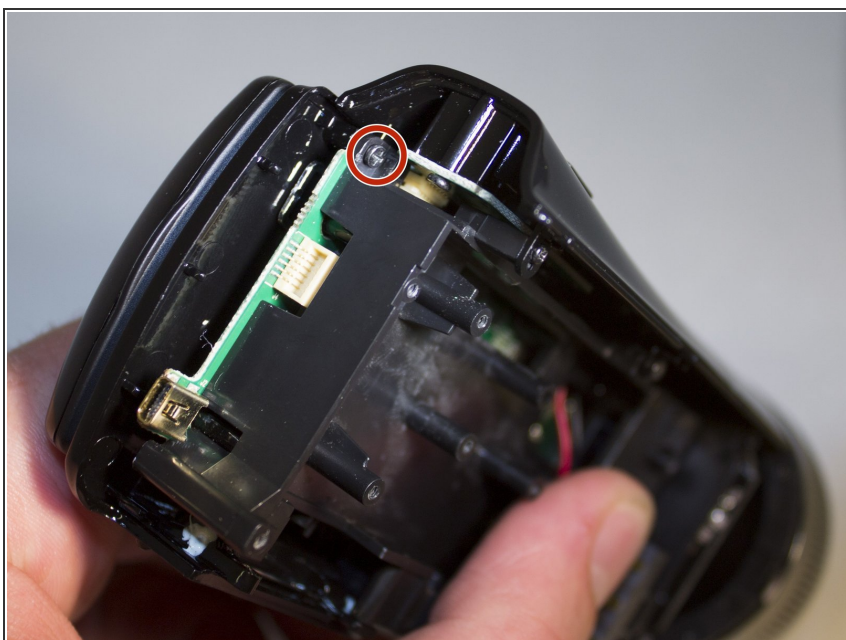
- Remove the two 4 mm Phillips #1 screws holding the back panel in place.

Step 7



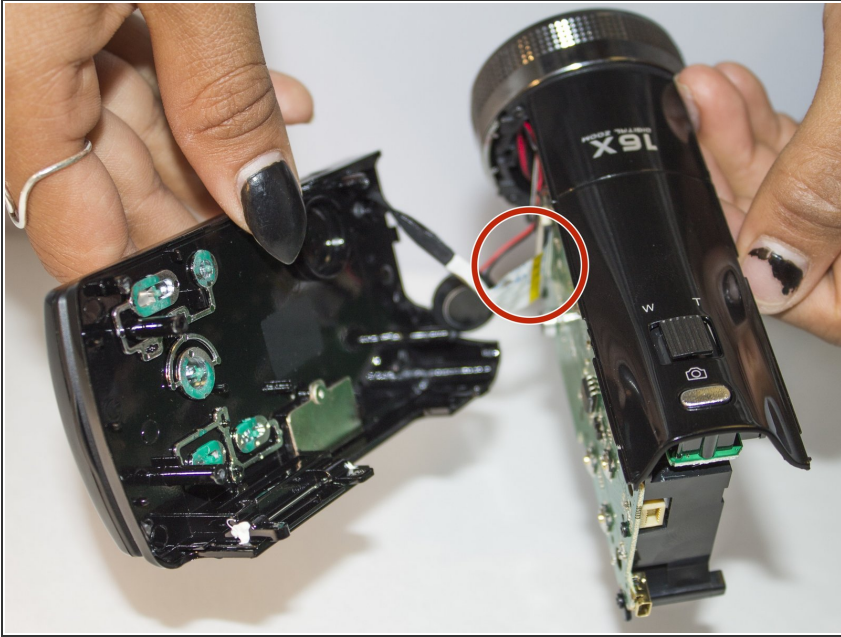
- Apply pressure to the back panel (away from the camera) to remove.

Step 8



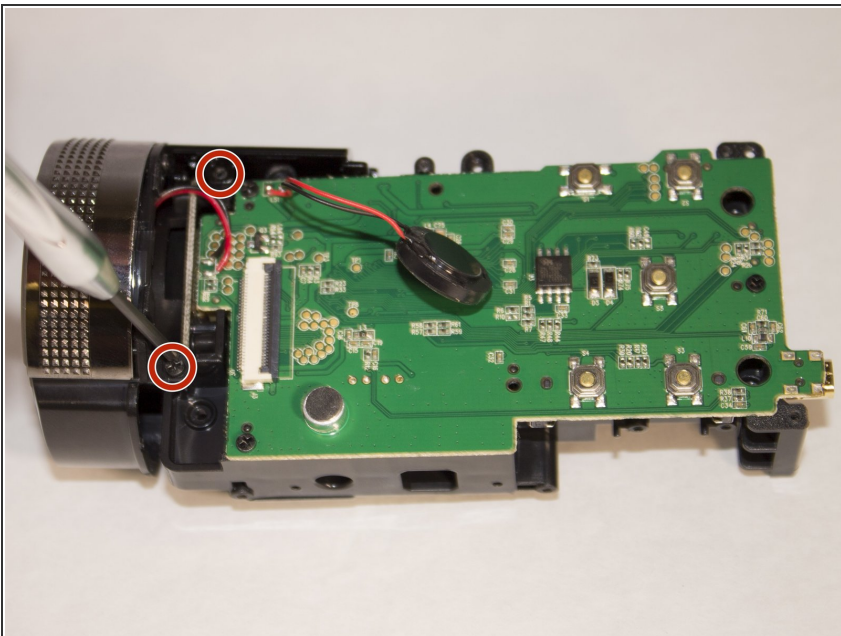
- Set aside back panel for now.
- Remove the final 4 mm Phillips #1 screw holding the screen in place. It is very small and hard to see.

Step 9



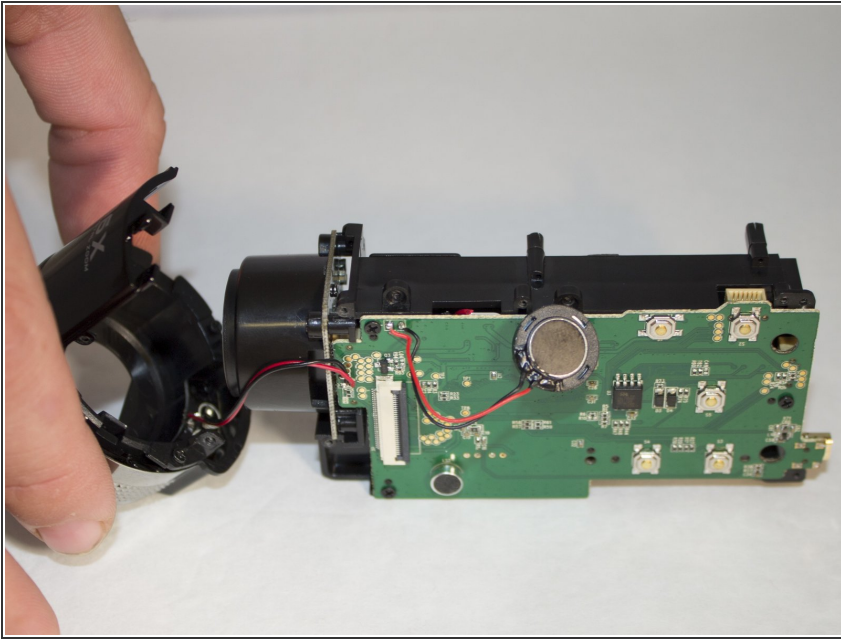
- Carefully apply pressure, away from the camera, to the screen to detach it from the body.
- The white cord should still be connected to the body.
- OPTIONAL: [Remove the screen](#) to make accessing the lens easier

Step 10



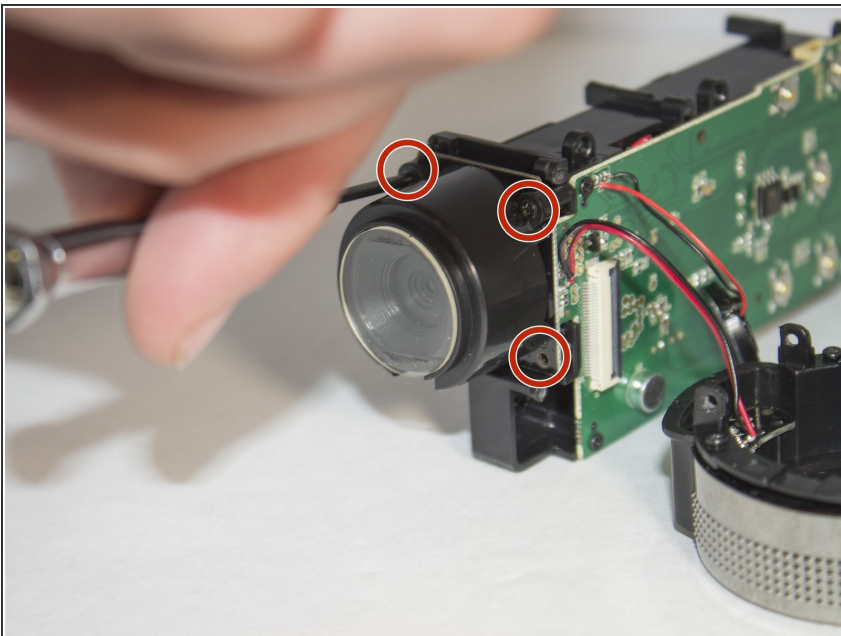
- Unscrew the two 4 mm Phillips #1 screws holding onto the lens casing
- ⚠ There are also two 4 mm Phillips #1 screws on the other side holding onto the lens casing, remove them as well.

Step 11



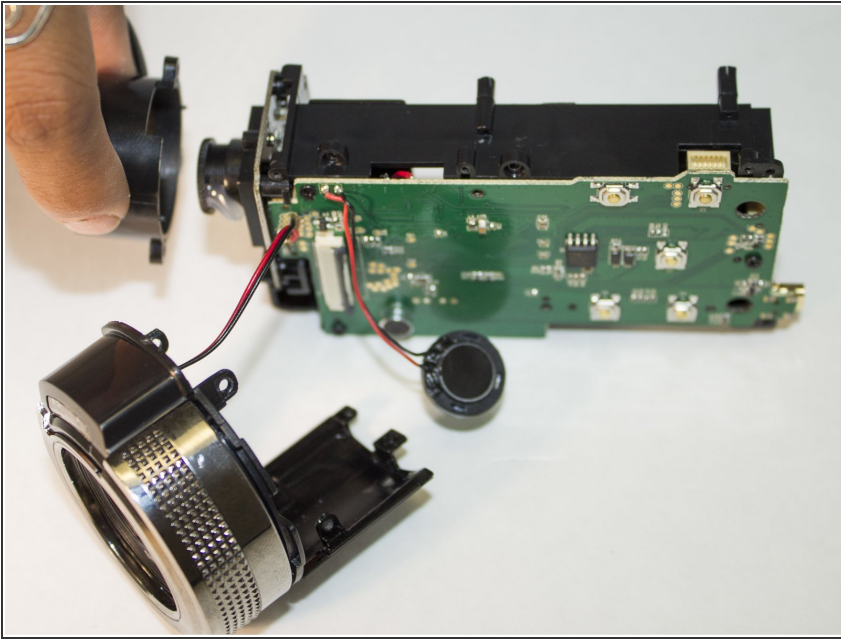
- Pull forward on the lens casing to remove it. The cord connecting the light to the motherboard should still be attached.

Step 12



- Unscrew the three 4 mm Phillips #1 screws holding the plastic lens holder.

Step 13



- Remove the plastic lens holder.

Step 14



- Push the lens out of the plastic casing from the back.
- Insert new lens into the plastic casing.

To reassemble your device, follow these instructions in reverse order.