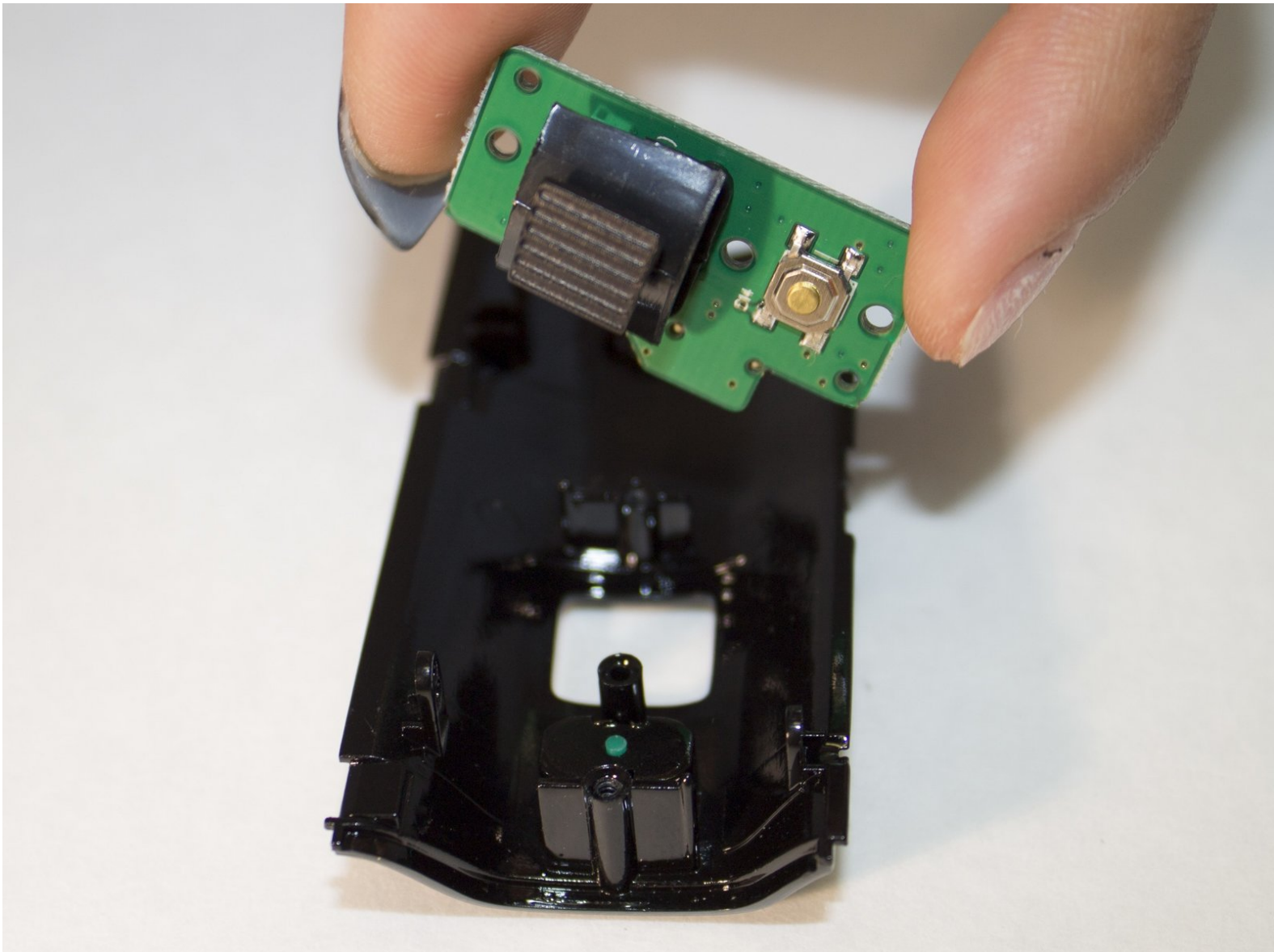




# PowerLead Puto PLD003 Zoom Button Replacement

This guide shows how to remove the side panel...

Written By: Justin Tew



---

## INTRODUCTION

This guide shows how to remove the side panel from the camera, how to remove the back panel, and how to replace the zoom button.



### TOOLS:

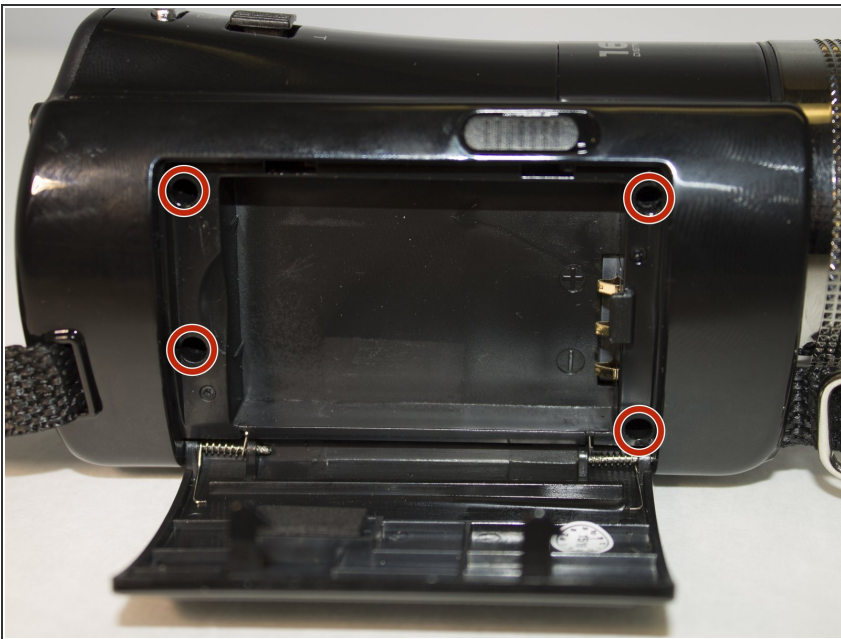
- [Phillips #1 Screwdriver](#) (1)
-

## Step 1 — Side Panel



- Slide the battery eject button open to release the battery door.

## Step 2



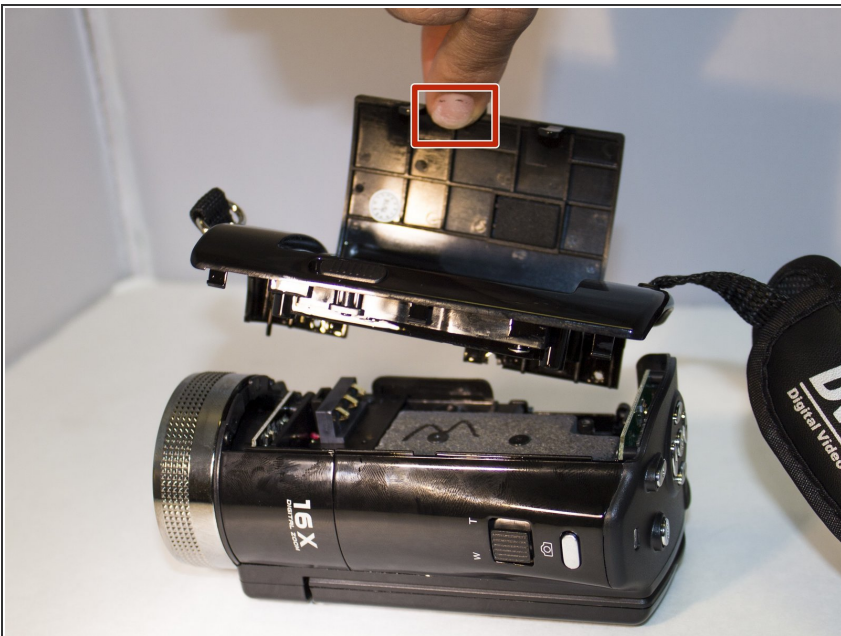
- With the battery door open, carefully remove all four 5 mm Phillips #1 screws.

### Step 3



- Rotate the camera so that the underside is facing up.
- Remove the four 5 mm Phillips #1 screws.

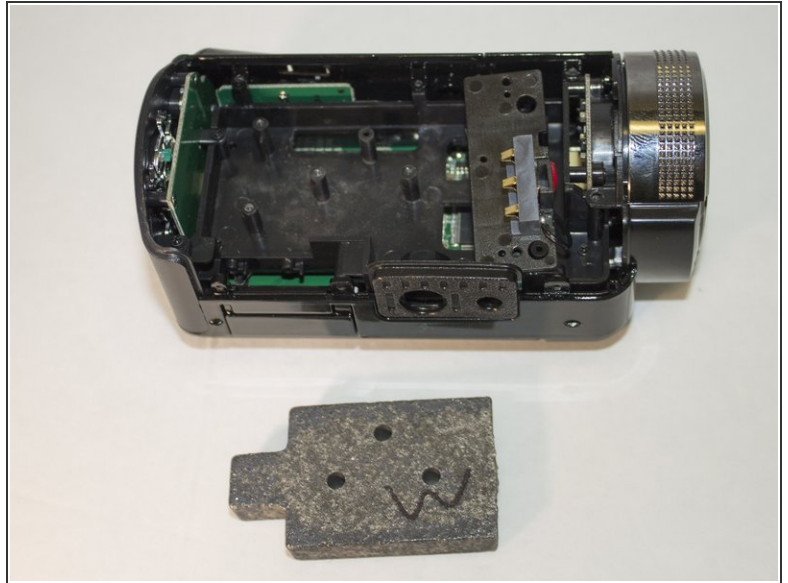
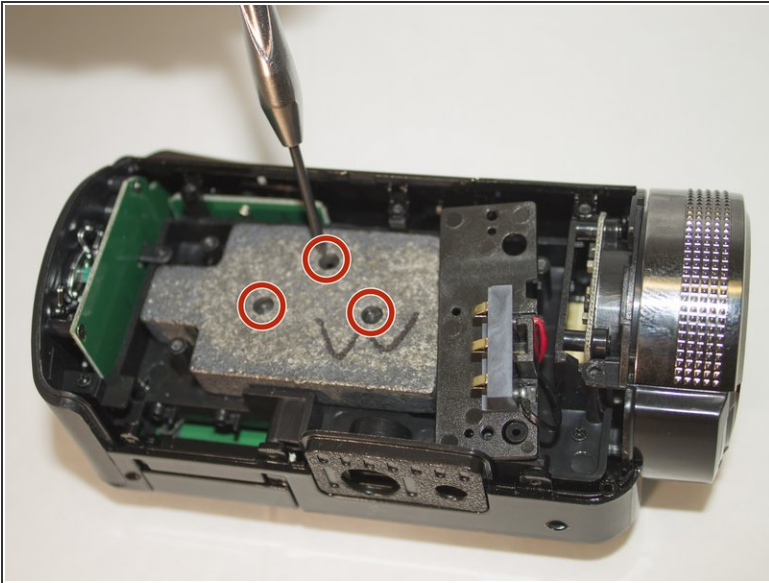
### Step 4



- Place the camera on a flat surface, with its underside facing you.
- Gently pull up on the side panel to remove it from the camera.

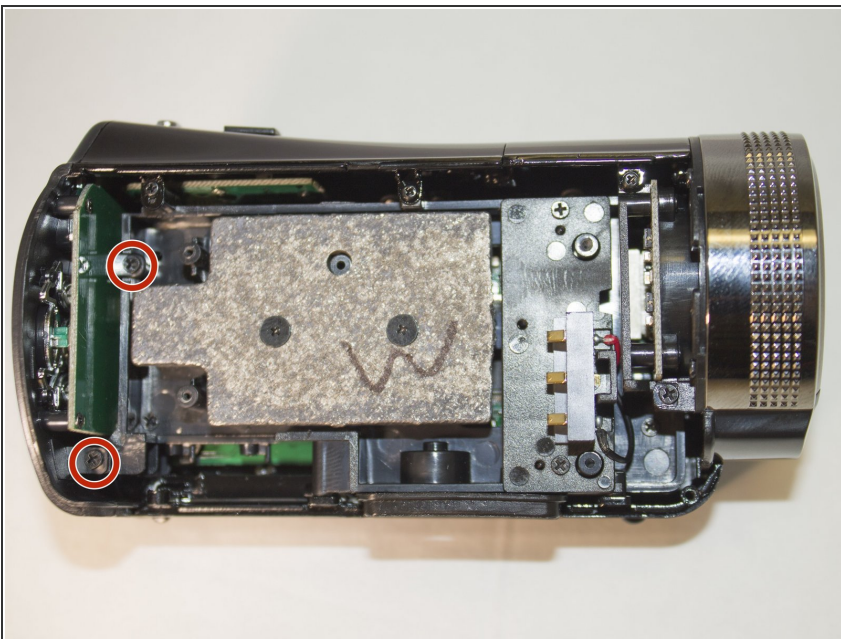


## Step 5 — Zoom Button



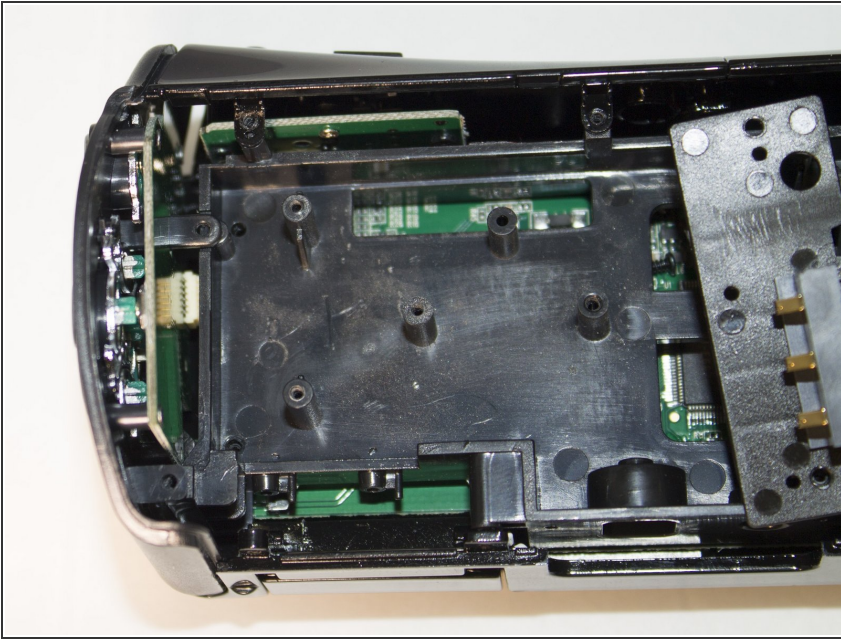
- Remove the 4 mm Phillips #1 screws holding the weight.
- Remove the weight.

## Step 6



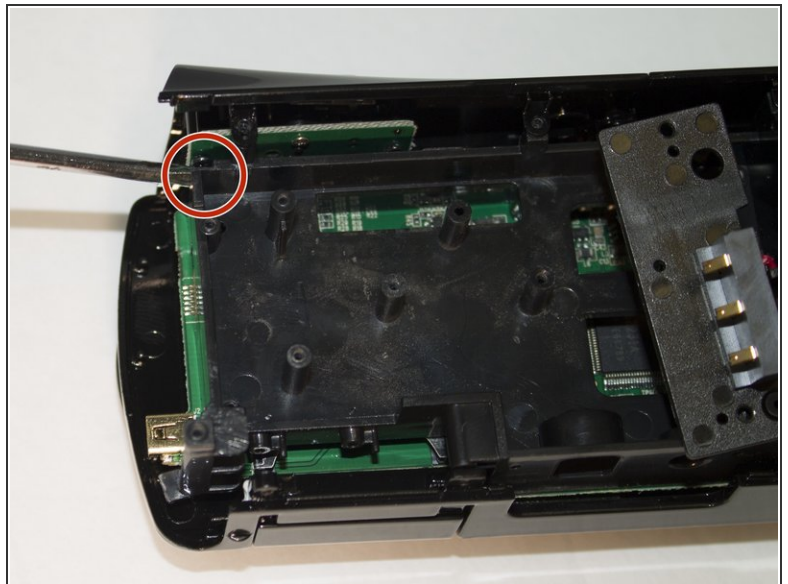
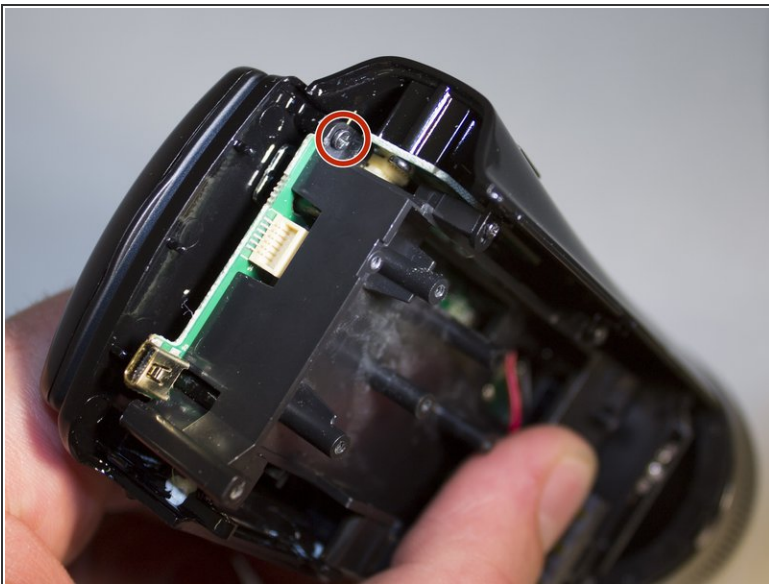
- Remove the two 4 mm Phillips #1 screws holding the back panel in place.

## Step 7




- Apply pressure to the back panel, pulling away from the camera to remove it.

## Step 8

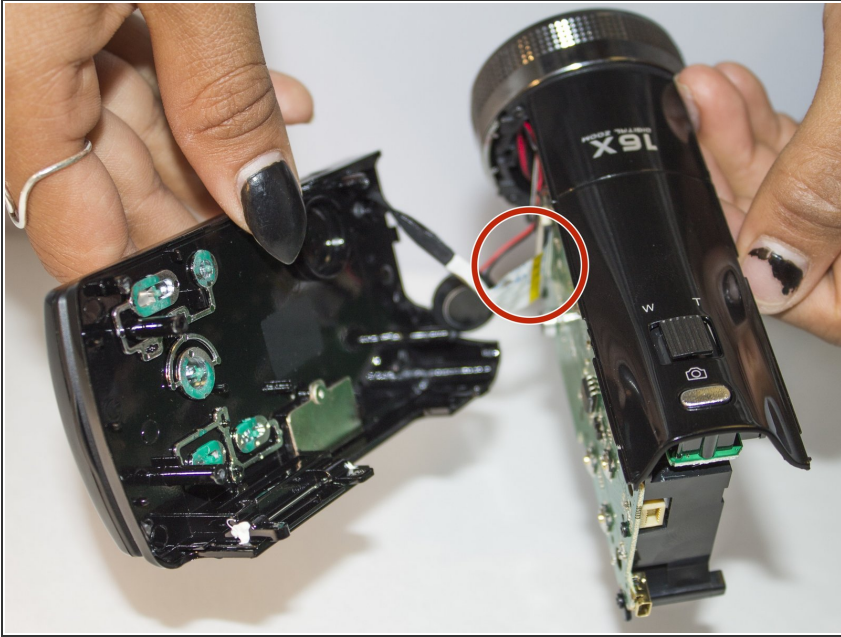


- Remove the final 4 mm Phillips #1 screw holding the screen in place.

 This screw is very small and hard to see.

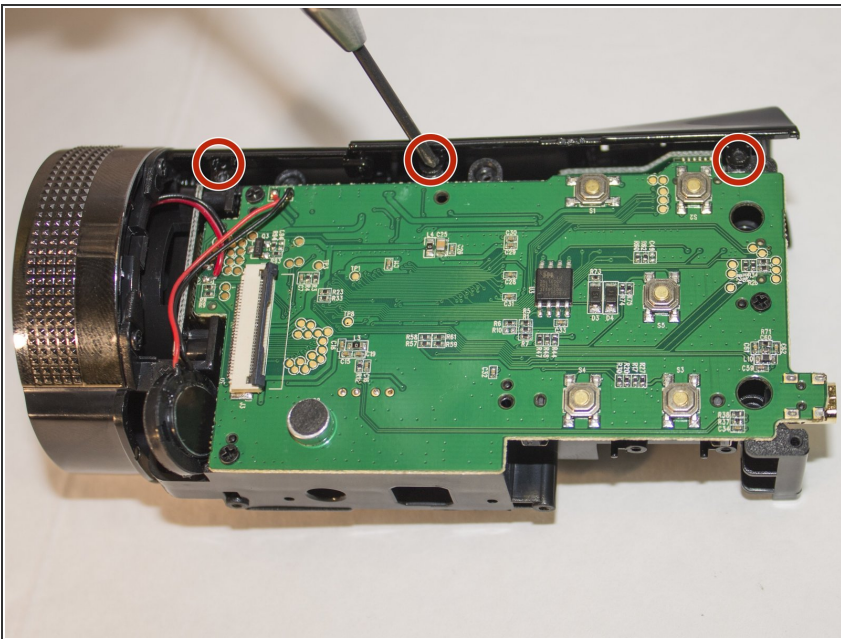


## Step 9



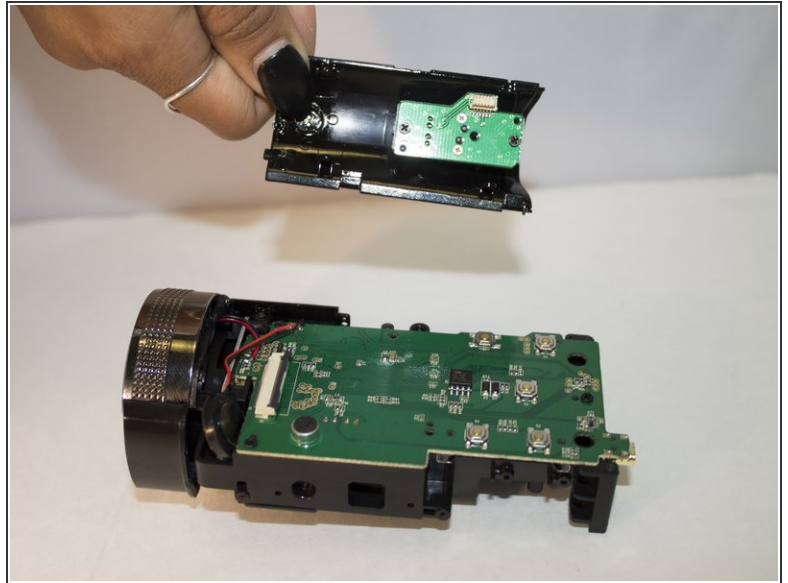
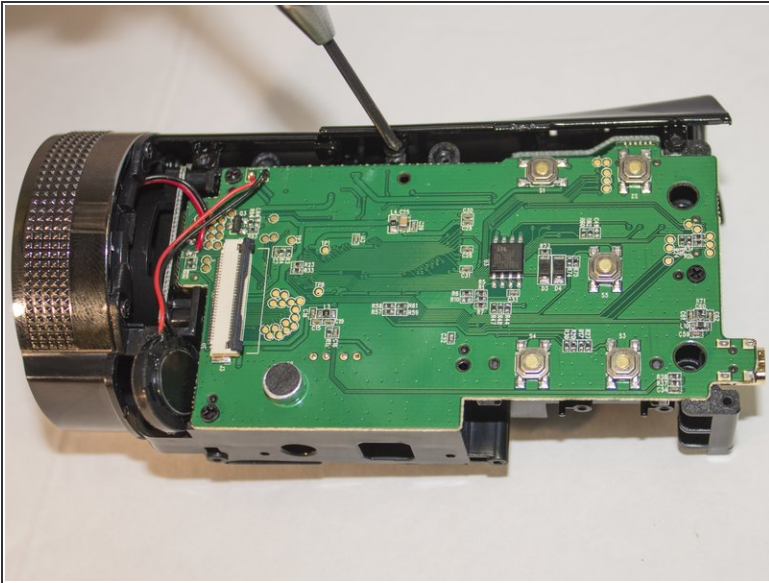
- Carefully apply pressure away from the camera to the screen to detach it from the body.
- The white cord should still be connected to the body.
- ❗ OPTIONAL: [Remove the screen](#) to make accessing the zoom button easier.

## Step 10



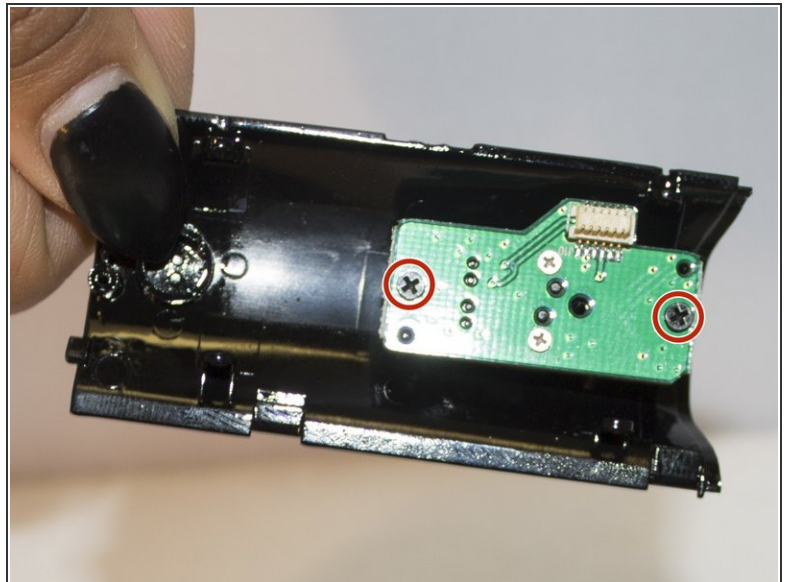
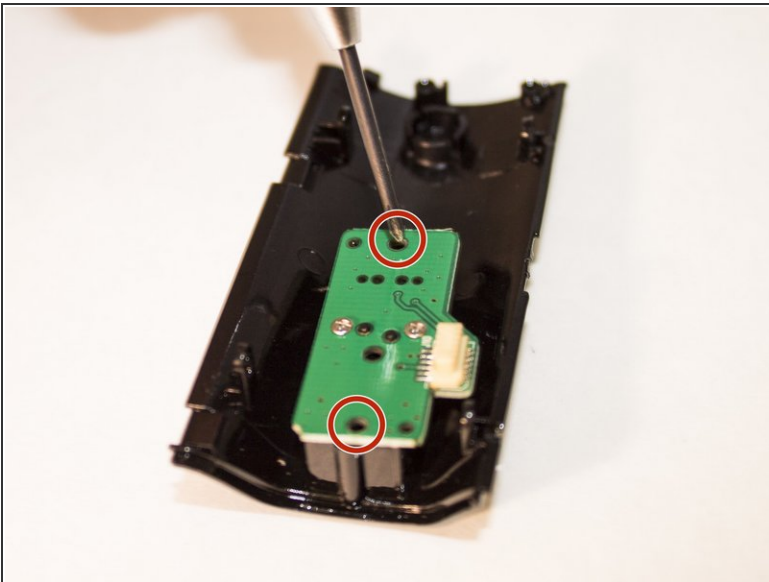
- Remove the three 4 mm Phillips #1 screws holding the top panel in place.

## Step 11



- Push upward on the top panel to remove it from the body of the camera.

## Step 12

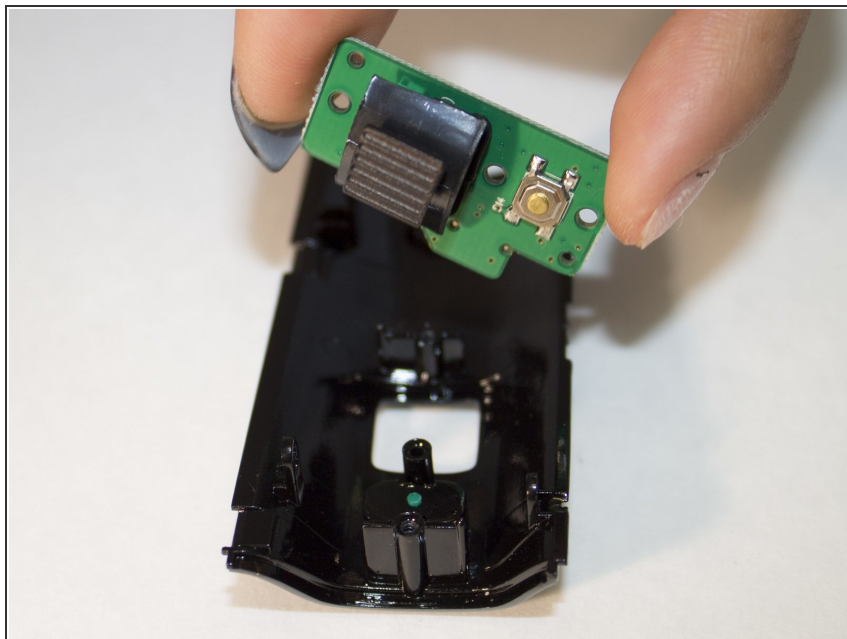


- Remove the two 4 mm Phillips #1 screws holding the circuit board in place.

⚠ Do not remove the silver screws.



## Step 13



- Lift the circuit board out of the plastic casing.
- Gently pull on the zoom button to remove it from the circuit board.

To reassemble your device, follow these instructions in reverse order.