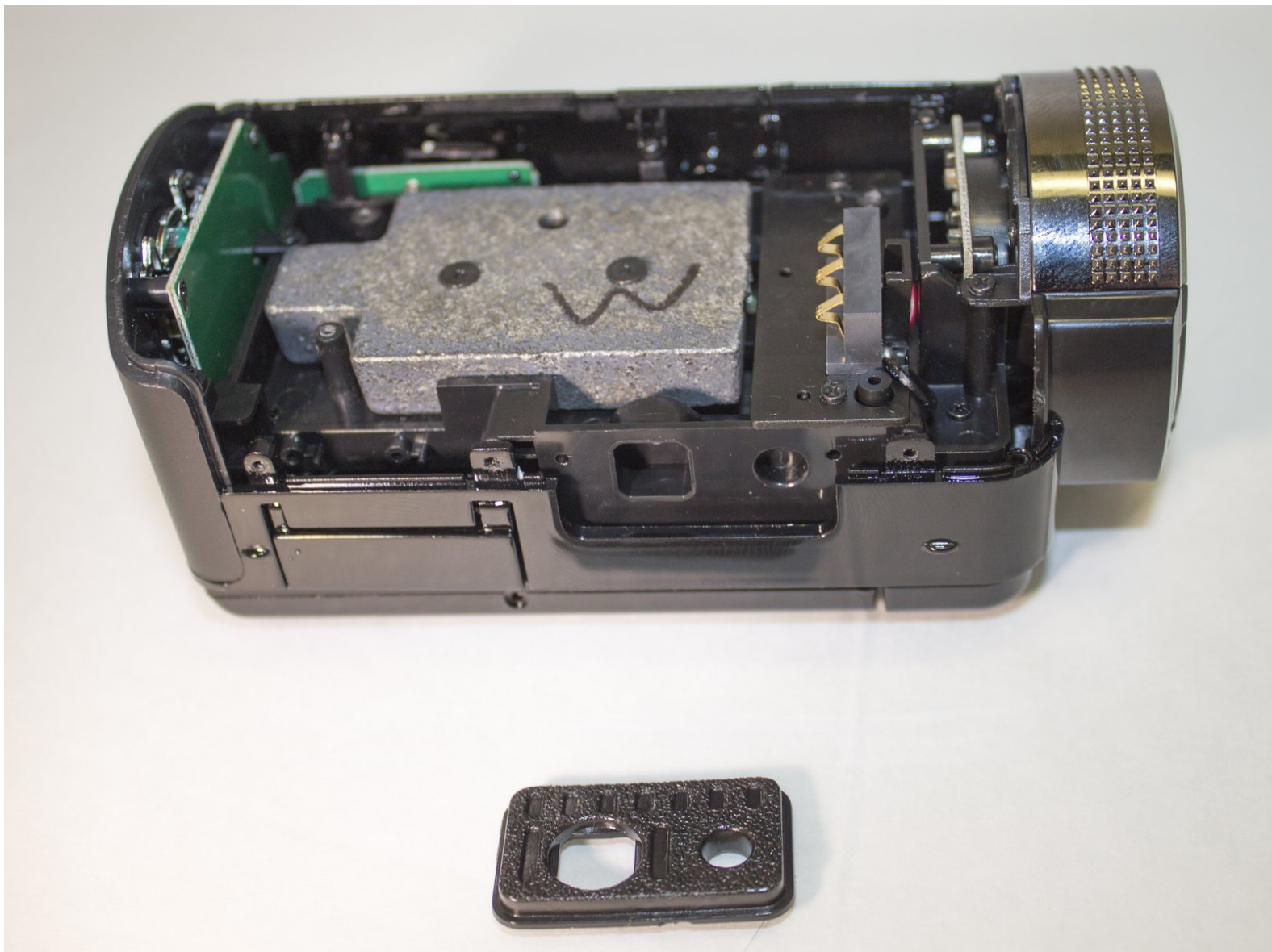




PowerLead Puto PLD003 Tripod Clip Replacement

This guide will show you how to replace the small piece of plastic that connects a tripod to the camera.

Written By: Justin Tew



INTRODUCTION

This guide shows how to remove the screws that hold the camera together, remove the side panel from the camera, and how to remove the tripod clip.



TOOLS:

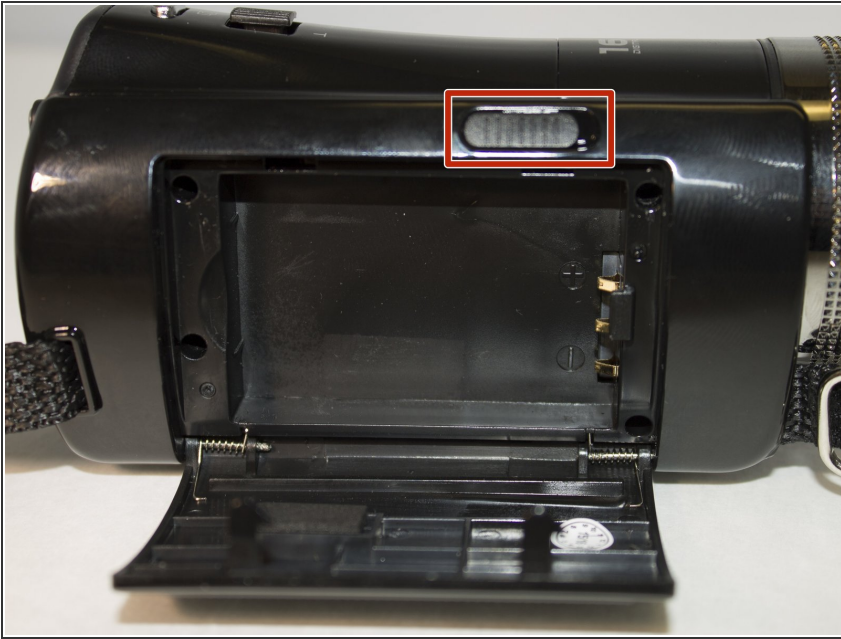
- [Phillips #1 Screwdriver](#) (1)



PARTS:

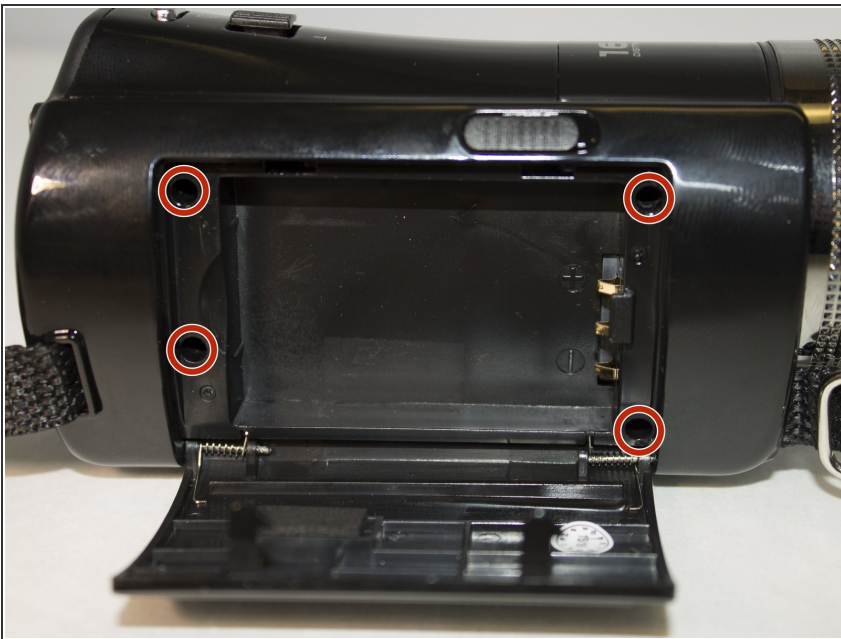
- [Replacement Tripod Clip](#) (1)

Step 1 — Side Panel



- Slide the battery eject button open to release the battery door.

Step 2



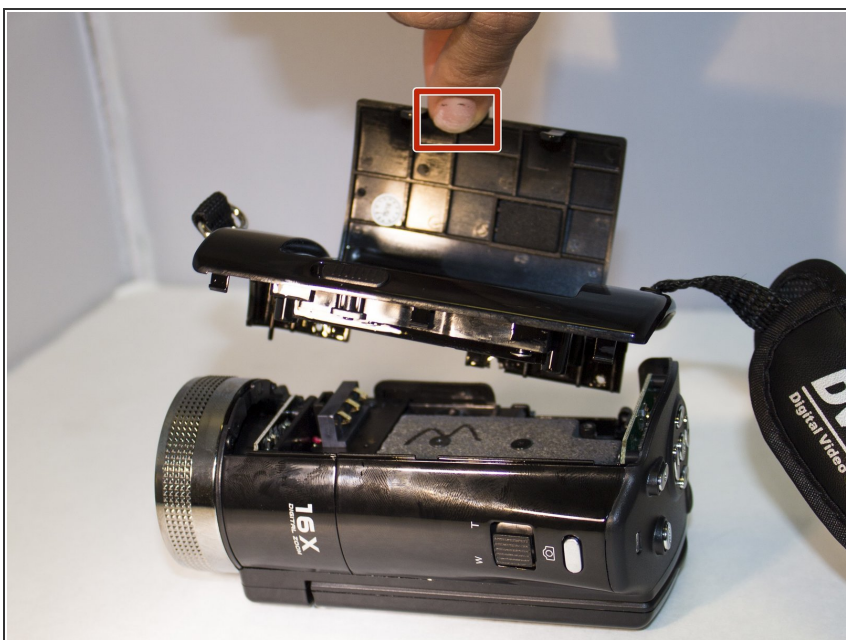
- With the battery door open, carefully remove all four 5 mm Phillips #1 screws.

Step 3



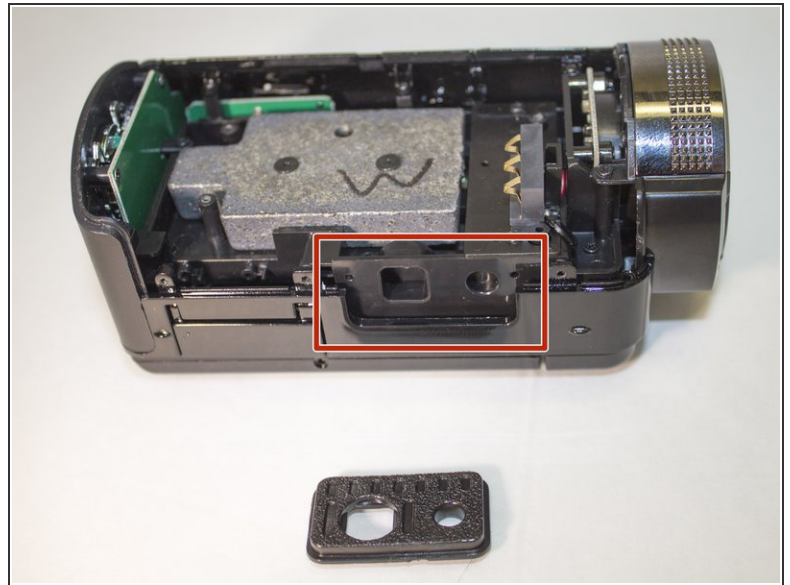
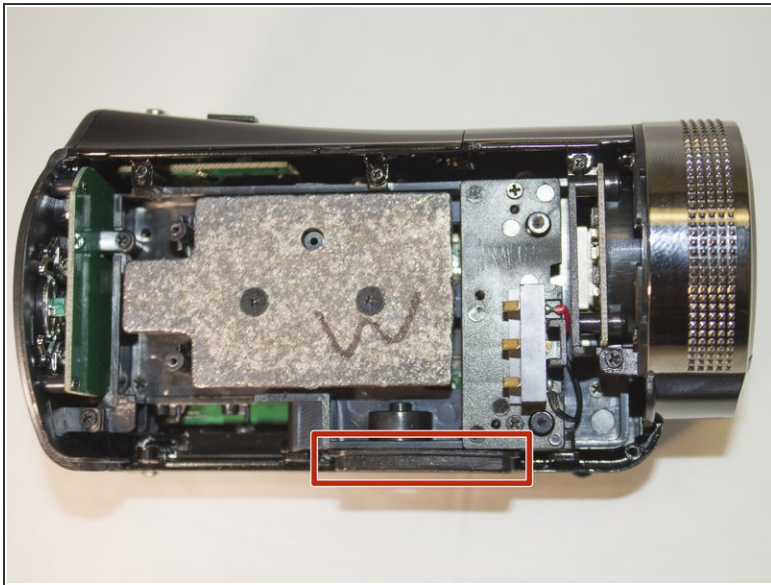
- Rotate the camera so that the underside is facing up.
- Remove the four 5 mm Phillips #1 screws.

Step 4



- Place the camera on a flat surface, with its underside facing you.
- Gently pull up on the side panel to remove it from the camera.

Step 5 — Tripod Clip



- Apply pressure upwards to remove the tripod clip.

To reassemble your device, follow these instructions in reverse order.