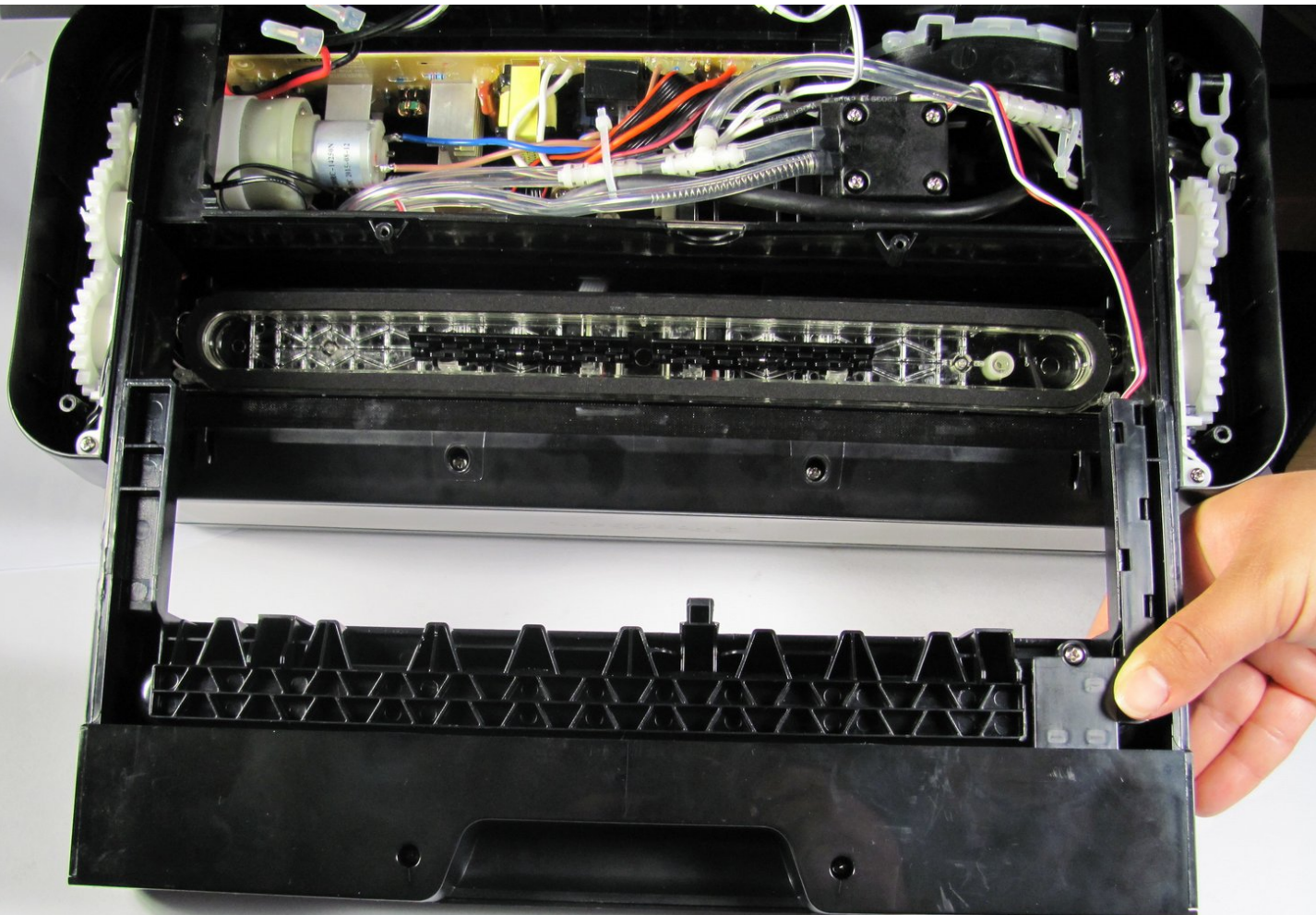




FoodSaver V4980 Drip Tray Drawer Replacement

This guide will allow you to replace the drip tray.

Written By: Mackenzie Grossgold



INTRODUCTION

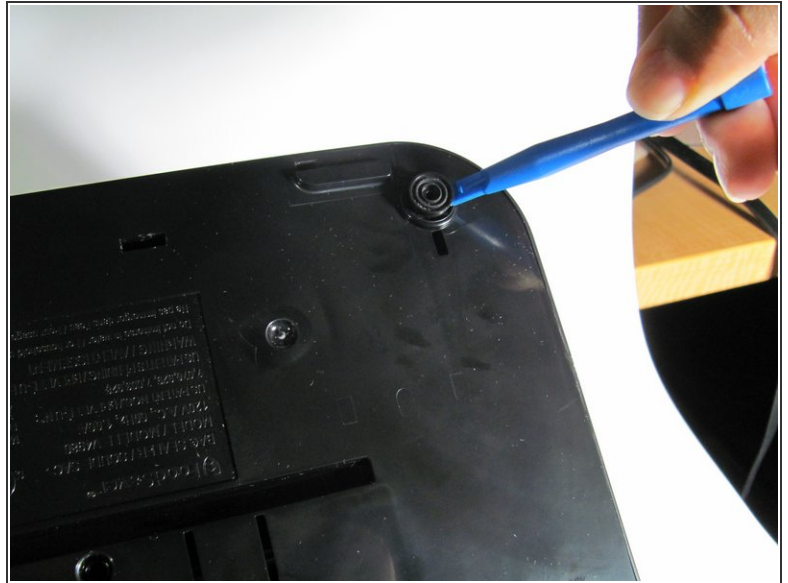
First we will walk you through removing the bottom panel that will allow you to view the drip tray. Then, we will replace the drip tray itself.



TOOLS:

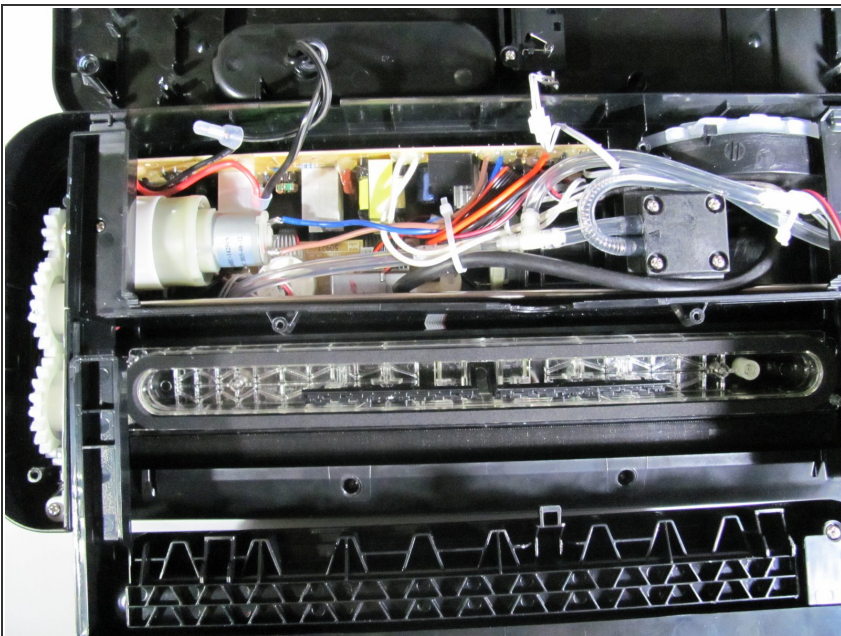
- [iFixit Opening Tools](#) (1)
 - [Phillips #2 Screwdriver](#) (1)
-

Step 1 — Bottom Panel



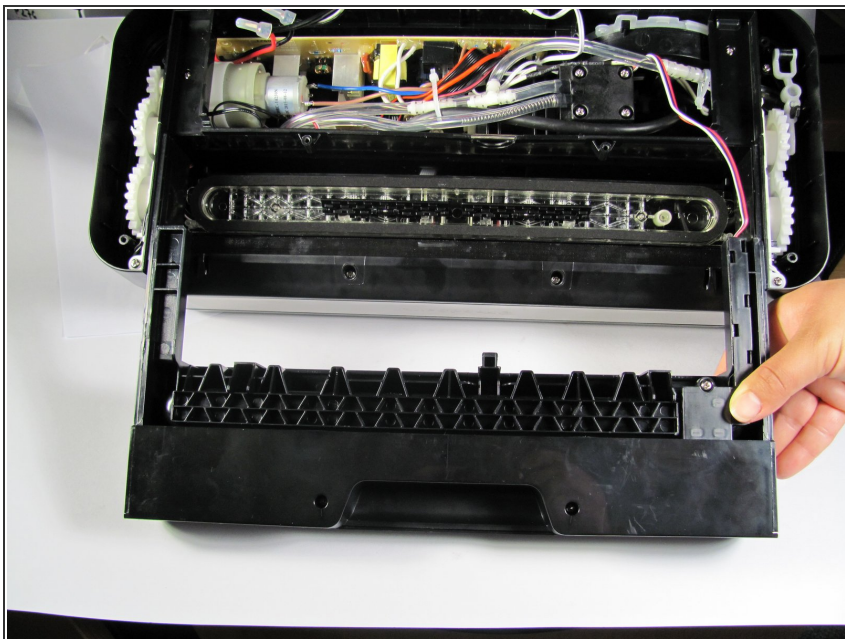
- Use the PH2 screwdriver to remove the three 14mm Phillips Head screws.
- Use a plastic opening tool to remove the rubber toppers, covering four more 14mm Phillips Head screws, and remove those screws with the same screwdriver.

Step 2



- You may now carefully unhinge the bottom panel.
- ⓘ The bottom panel does not completely come off. There are many wires connecting the panel to the body of the machine, so be careful not to remove any of them on accident.

Step 3 — Drip Tray Drawer



- The drip tray should come right off. You may clean this afterwards and/or replace it, whichever is needed most.

To reassemble your device, follow these instructions in reverse order.