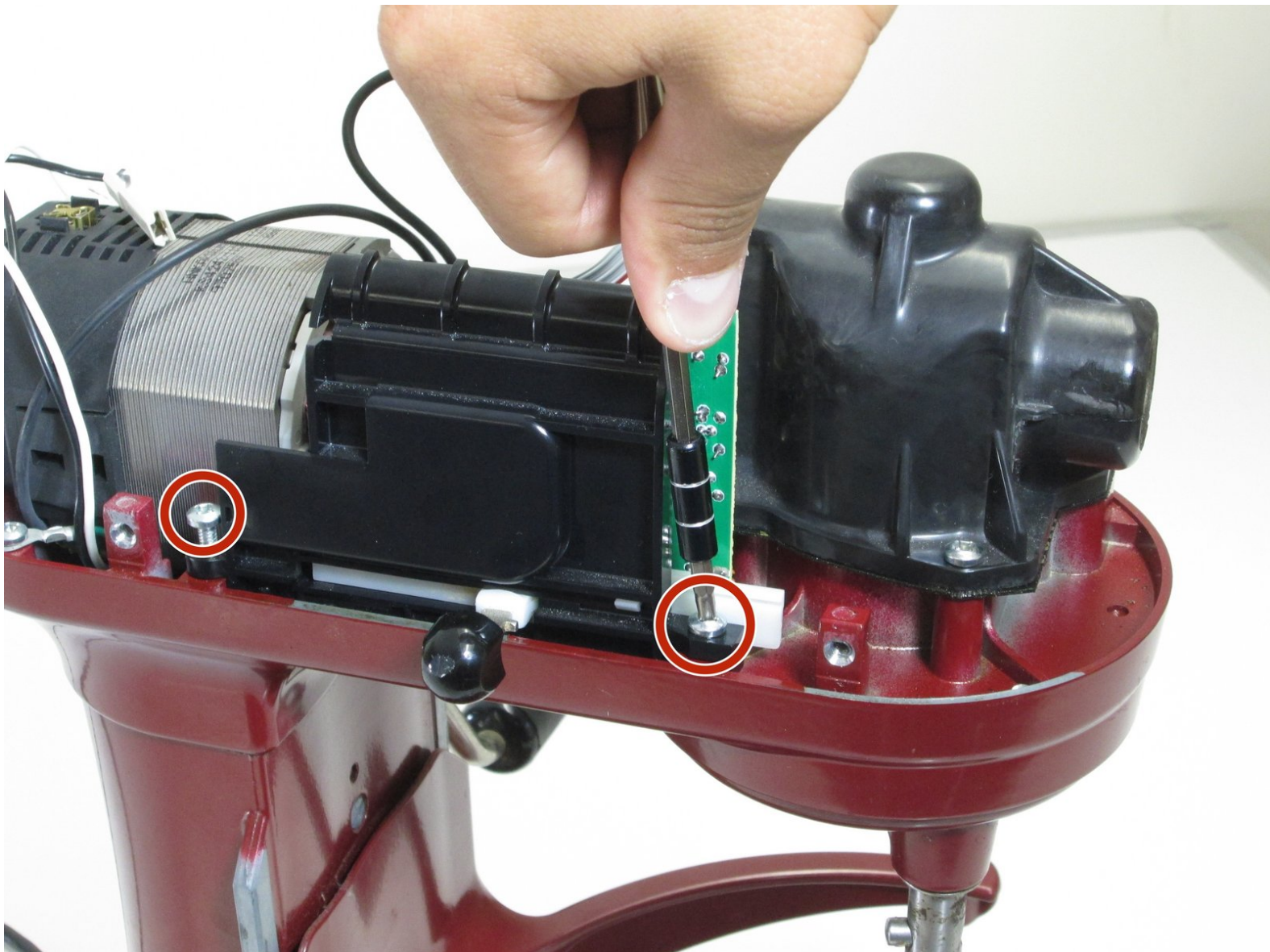




KitchenAid Professional 600 Speed Selector Replacement

If the mixer only runs at specific speeds, or the speed knob gets stuck, the selector switch may need to be replaced. This guide will show how to do so.

Written By: Tallon Dotinga



INTRODUCTION

As an expensive mixer that is built to last, some key components do go bad from time to time. Overall, your investment, with a few fixes along the way, will nearly last a lifetime. This guide will demystify your repair to your KitchenAid Pro stand mixer.



TOOLS:

- [Phillips #2 Screwdriver](#) (1)



PARTS:

- [KitchenAid Part# WP9706648](#) (1)

Step 1 — Top Cover



- Take out the screw which holds on the silver band using a Phillips #2 screwdriver.
- Remove the silver band.

Step 2



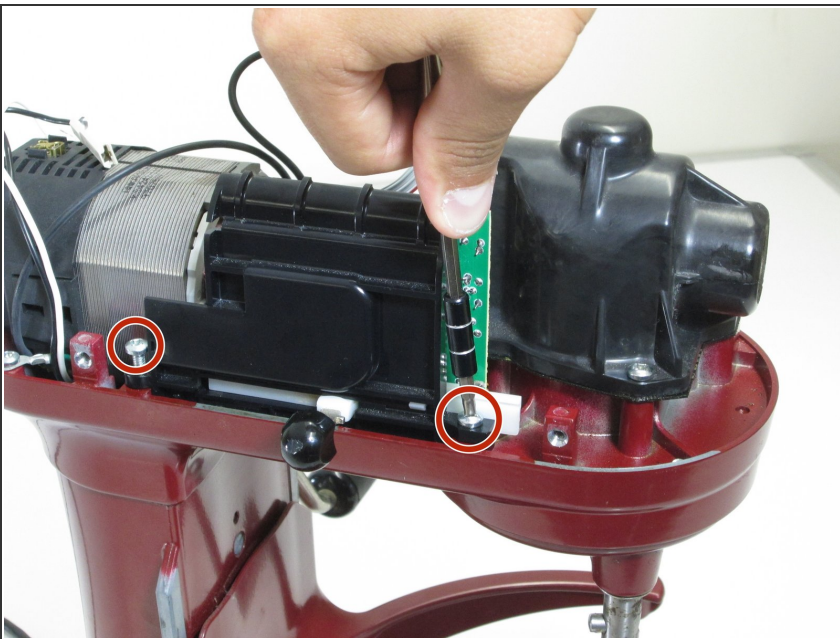
- Remove the four Phillips #2 screws located around the mixer where the band was removed.
- ⓘ This picture only shows two of the screw that you need to remove. The other two are on the exact opposite side of the mixer.

Step 3



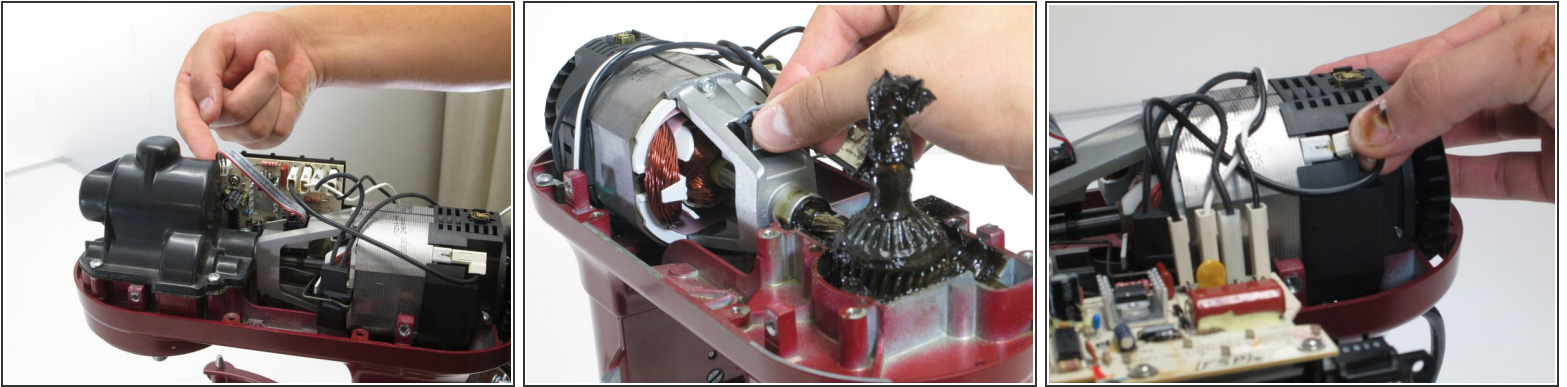
- Remove the top of the mixer to reveal the inner parts.
- ⓘ The top should lift off, but may not if it is stuck. A sharp strike from the back with the hand may unstick it. It will slide forward about a 3/8 of an inch. Push it back again from the front and it should be free enough to lift.

Step 4 — Speed Selector



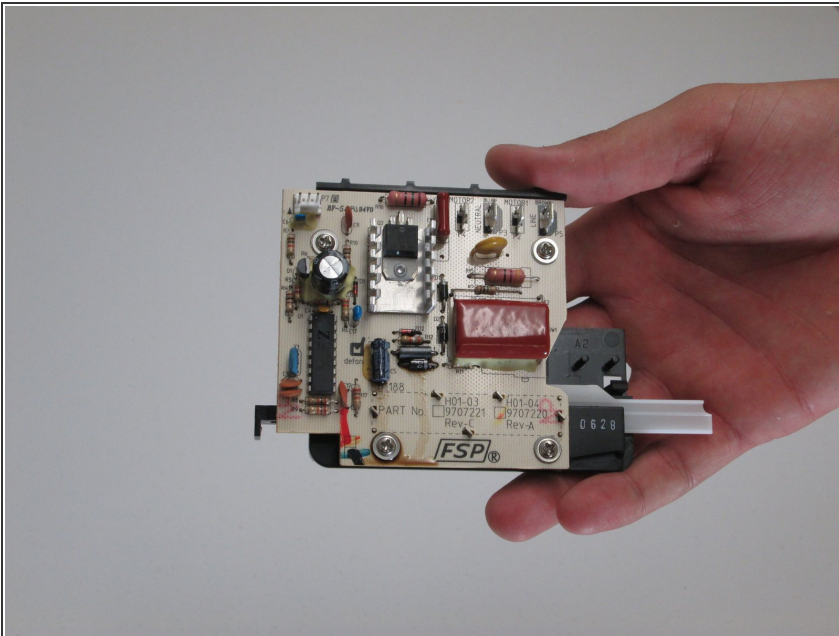
- Locate the selector switch.
- Remove the two Phillips #2 screws holding the selector switch in place.

Step 5



- Unplug the cords attached the drive motor to the switch.
- *i* We suggest numbering them left from right so they are reattached to the replacement part in the right order.

Step 6



- Pull out the Selector Switch.

To reassemble your device, follow these instructions in reverse order.