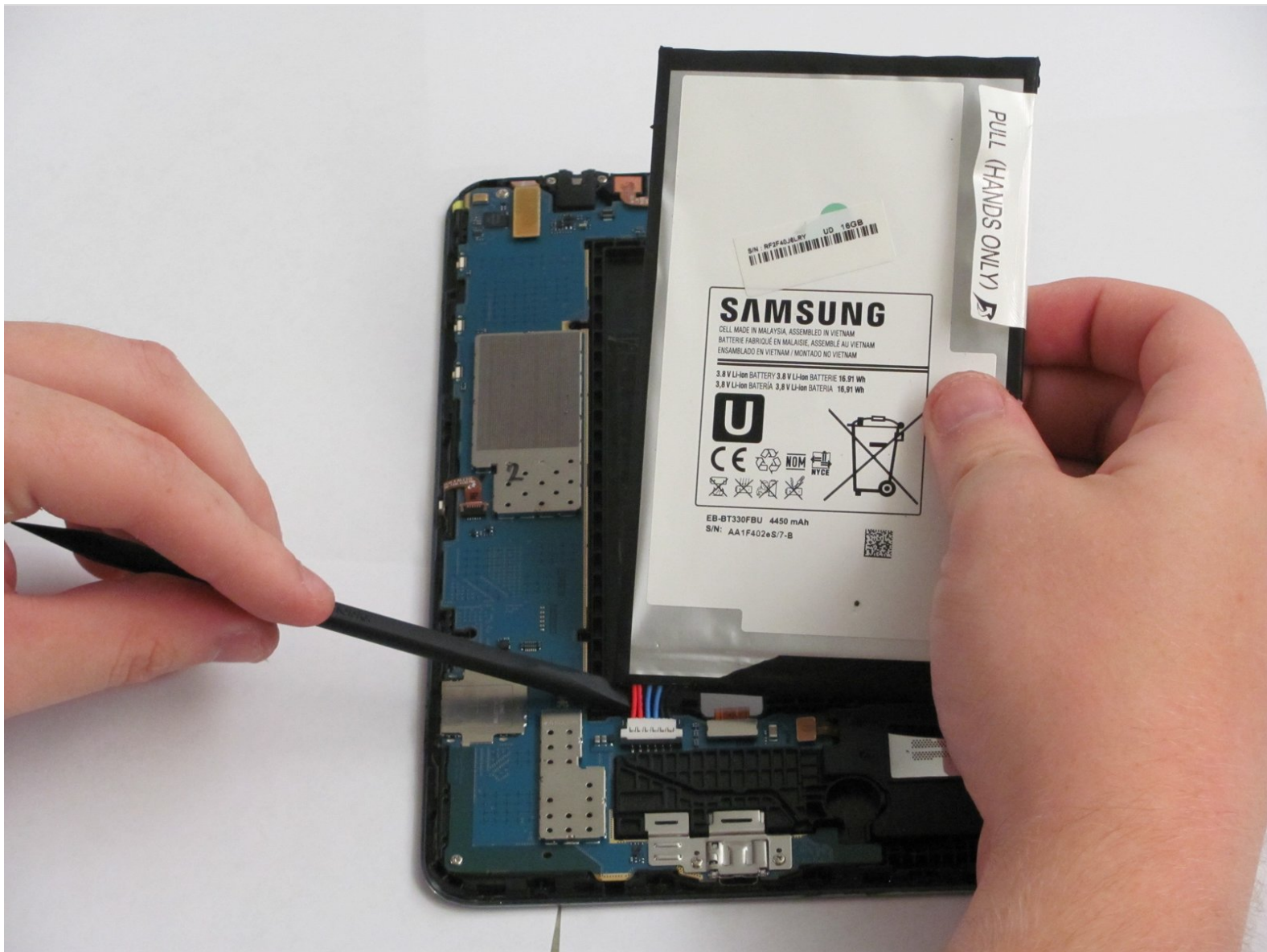




Samsung Galaxy Tab 4 8.0 Wi-Fi Battery Replacement

In order for your tablet to be at all useful, it needs to be powered up and be in use for several hours at a time. This guide will demonstrate how to replace your battery and ensure that your tablet is able to run for as long as possible.

Written By: Steven Lamb



INTRODUCTION

This guide will show you how to safely remove the battery from the Samsung Galaxy Tab 4 8.0 Wi-Fi model. Enjoy the new battery for your tablet! It will definitely outlast the replaced battery.



TOOLS:

- [iFixit Opening Tools](#) (1)
- [Spudger](#) (1)



PARTS:

- [Samsung Galaxy Tab 4 8.0 Battery](#) (1)

Step 1 — Rear Case



- ⓘ Before you begin the replacement process, make sure the tablet is completely powered off.
- Gently insert the plastic opening tool between the metal rim and the back plastic casing at the bottom of the tablet and pry the back casing away from the device. Continue to separate the back panel of the device from the front assembly.
- ⓘ Right-handed users will probably be more comfortable prying in a clockwise movement, while left-handed users will feel more comfortable doing a counter clockwise movement.
- ⓘ When taking off the rear case there will be periodic clicking noises. Do not worry about those noises. They are just the rear case being disconnected.
- ⚠ Be careful not to use too much force as the plastic clips can easily be broken.

Step 2



- Place the tablet screen down on a clean surface.
- Grasp the back panel and lift it from the device.

Step 3 — Battery



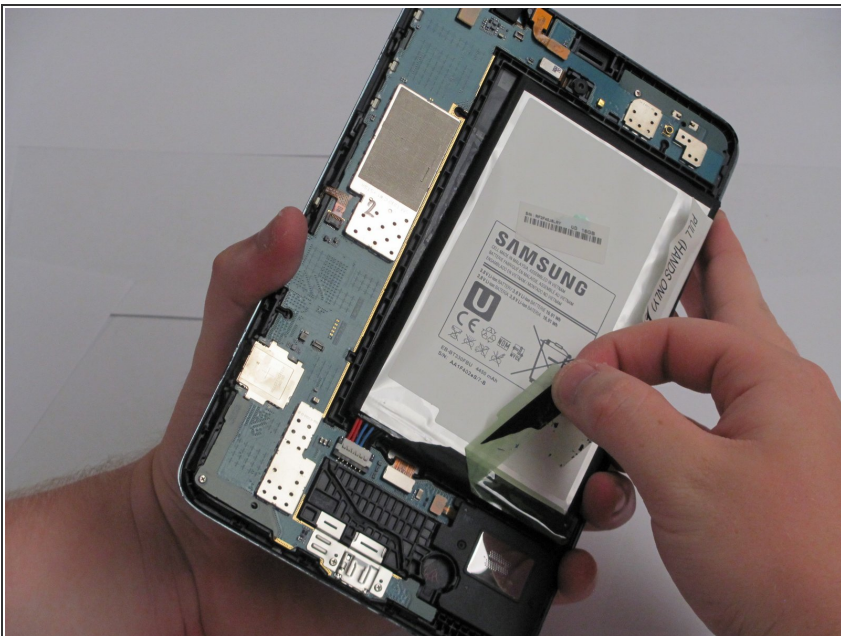
- Peel the sticker, reading "PULL (HANDS ONLY)," off of the battery starting at the detachable corner.

Step 4



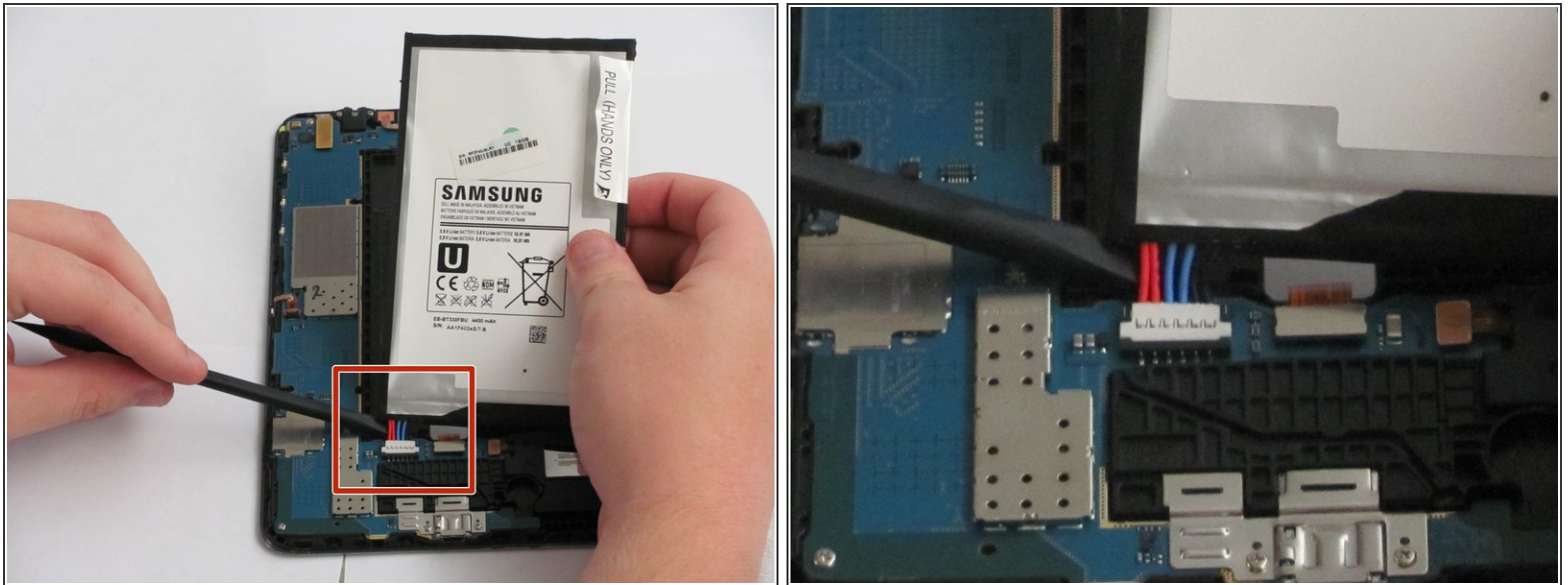
- Grab the top right corner of the battery and pull it out of the device.
- ⓘ If there is adhesive keeping the battery in place, use the flat end of the spudger and run it between the battery and the front panel.
- ⚠ Do not completely remove the battery as doing so could cause damage to the motherboard and the cables attached to the battery.

Step 5



- Peel away the green tape starting at the bottom left side.

Step 6



- Use the spudger to disconnect the battery connector by running it along the underside of the battery.
- Lift the battery out of the assembly.

To reassemble your device, follow these instructions in reverse order.