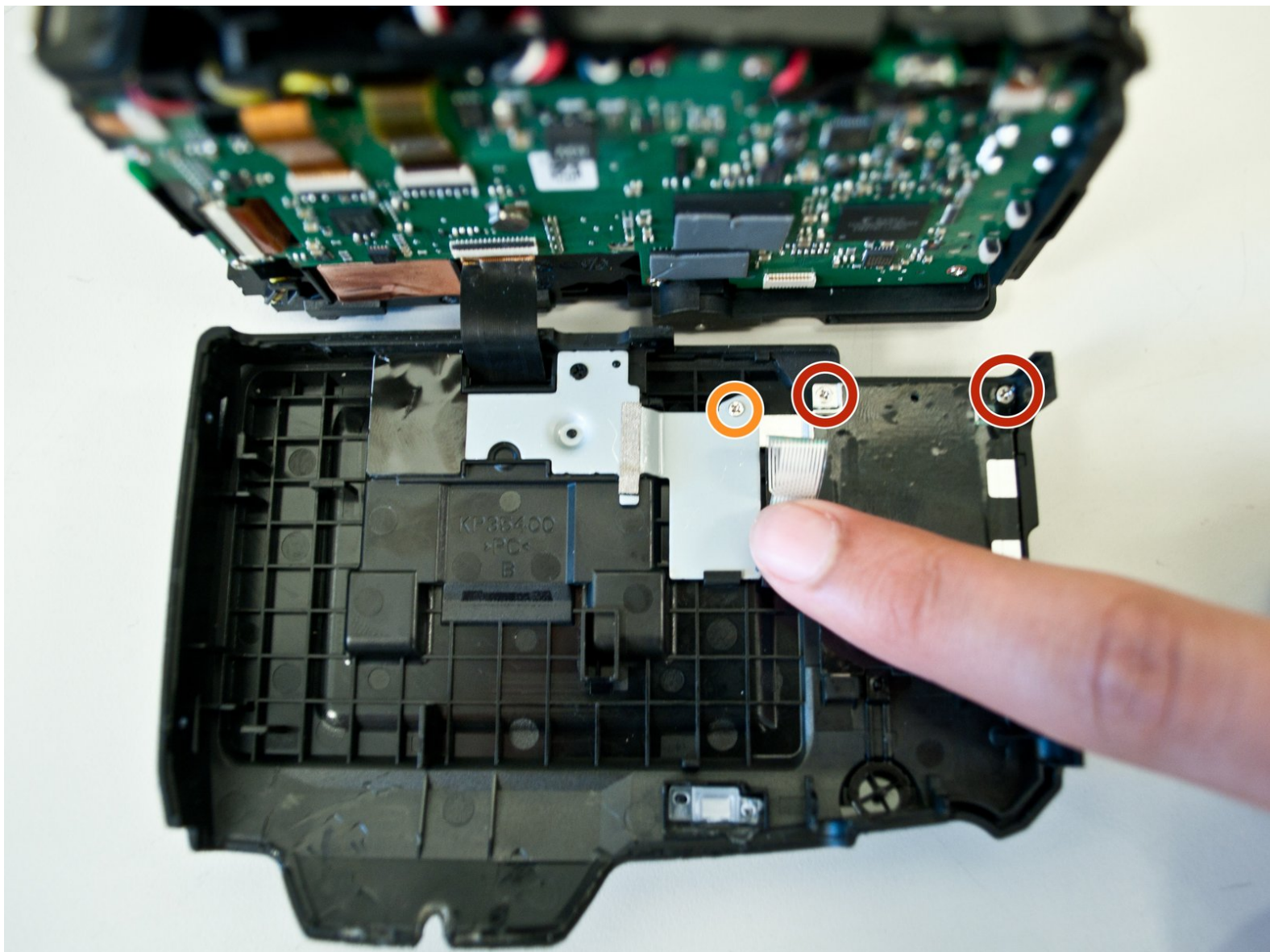




Nikon Coolpix L840 Buttons Replacement

This guide will show you how to replace the buttons next to the LCD screen

Written By: Abraham Lozano



INTRODUCTION

This guide details the steps required to replace buttons on the back face of the camera. Please use this guide only when a specific button is not working. When the problem involves other parts of the camera or all of the buttons, you may need to [replace a component of the circuit board](#).

TOOLS:

- [Phillips #000 Screwdriver](#) (1)
 - [Metal Spudger](#) (1)
 - [Tweezers](#) (1)
-

Step 1 — Motherboard



- Unscrew all eight black, 4mm screws with a Philips 000. (The top-most screw shown in the third image can be accessed by lifting the cover flap off.)

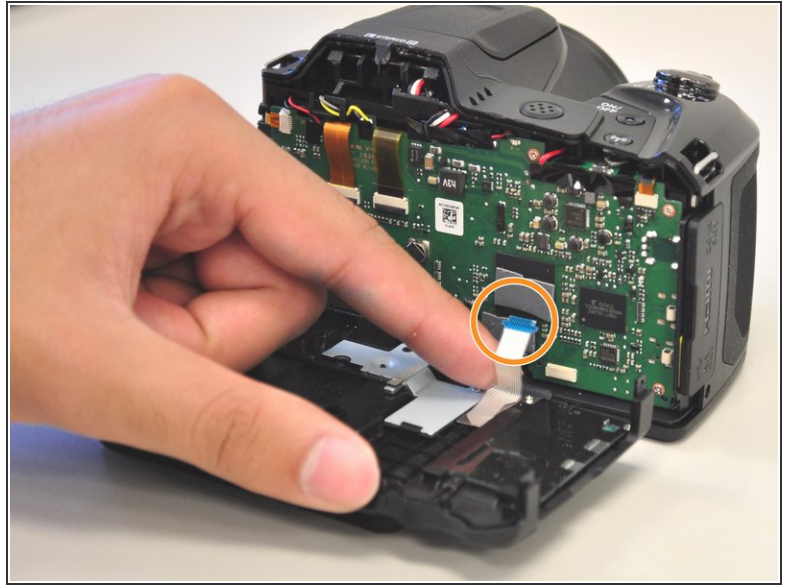
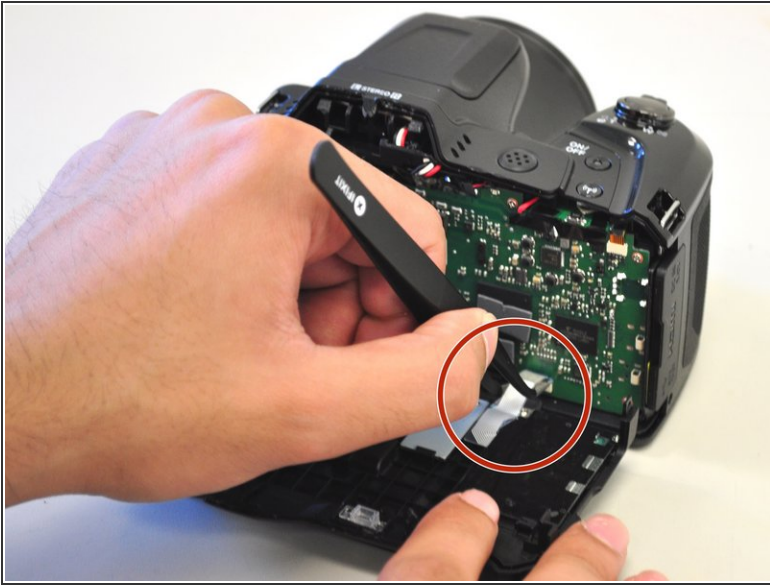
Step 2



- Pry case open with a metal spludger by slipping the spludger between the back and front case of the camera and wiggling the spludger forwards and backwards.

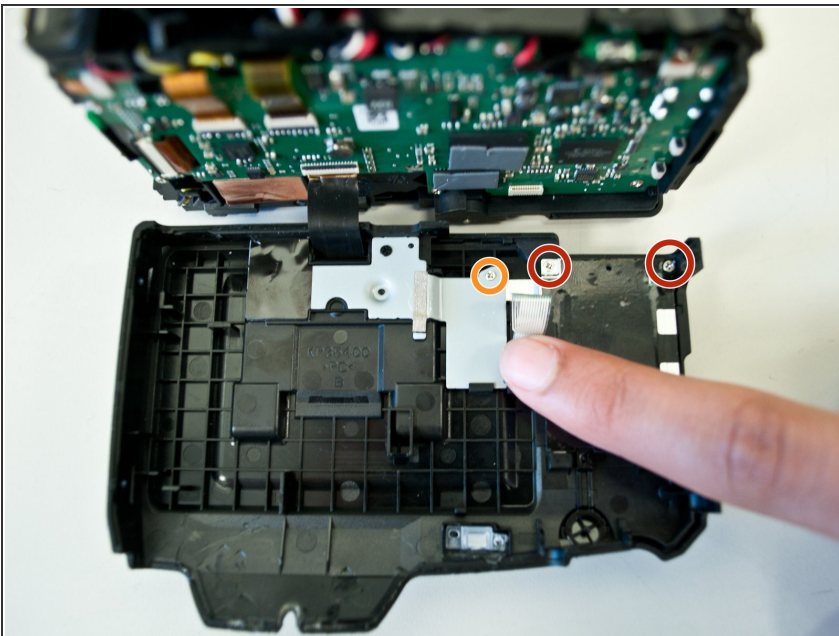
⚠ Be careful not to damage the inner components of the camera when slipping the spludger into the camera.

Step 3



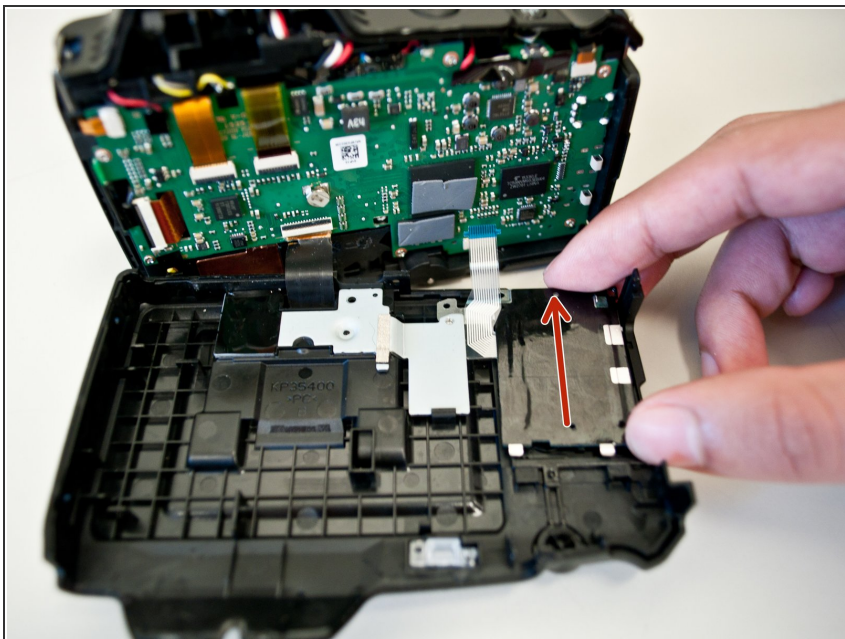
- Carefully unhook the silver strip with tweezers. Get a grasp of the sides of the silver strip with the tweezers, and pull upwards and out.
- The strip may also be identified by its blue tip, which becomes more visible once pulled out.

Step 4 — Buttons



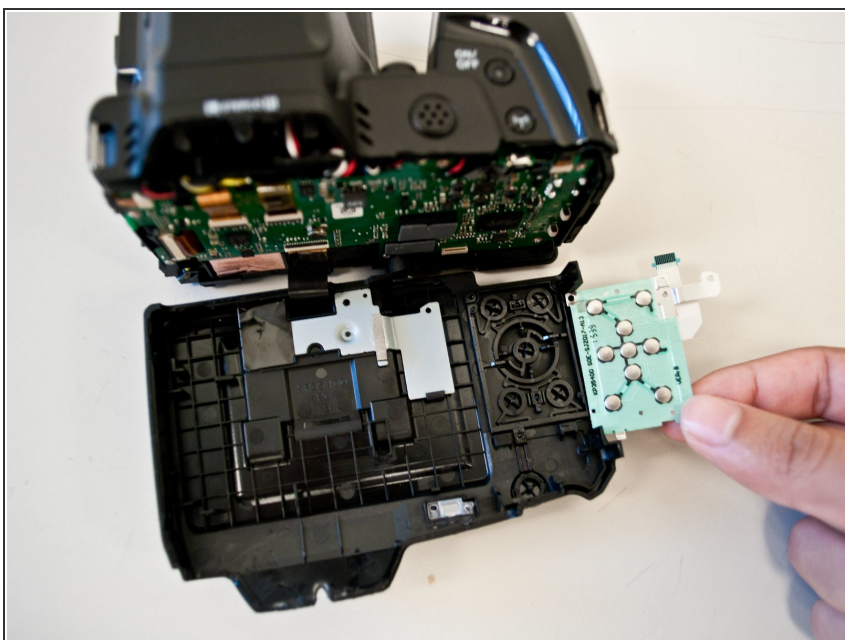
- Unscrew the two, right-most, 2 mm screws with a Philips 000.
- Unscrew the left-most, 4 mm screw with a Philips 000.

Step 5



- Slide off the button panel in the marked direction.

Step 6



- Flip to the front side of the button panel to access the button sensors.

To reassemble your device, follow these instructions in reverse order.