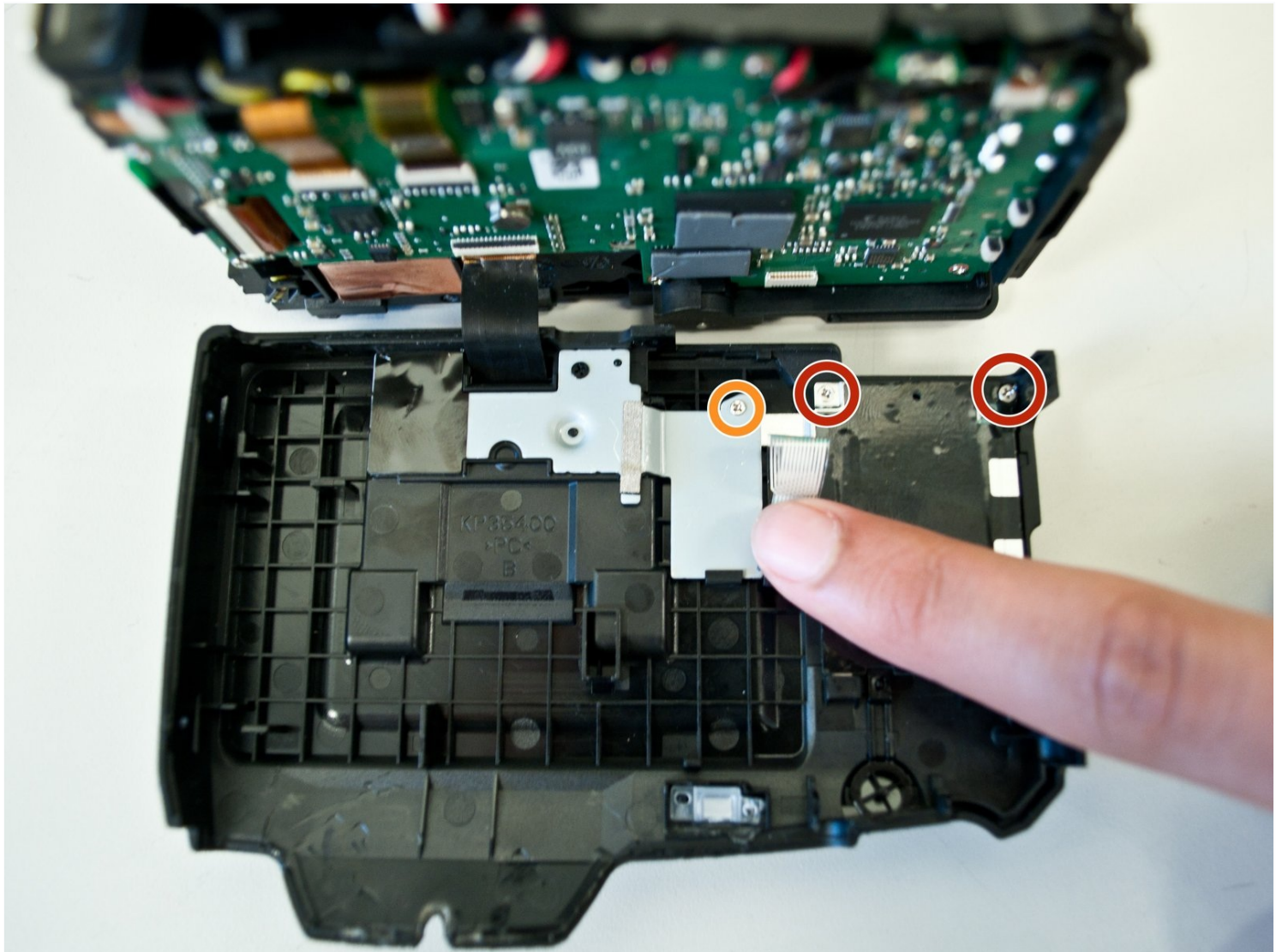




# Nikon Coolpix L840 Buttons Replacement

This guide details the steps required to...

Written By: Abraham Lozano



# INTRODUCTION

This guide details the steps required to replace buttons on the back face of the camera. Please use this guide only when a specific button is not working. When the problem involves other parts of the camera or all of the buttons, you may need to [replace a component of the circuit board](#).

---

## TOOLS:

Phillips #000 Screwdriver (1)

Metal Spudger (1)

Tweezers (1)

## Step 1 — Motherboard



- Unscrew all eight black, 4mm screws with a Philips 000. (The top-most screw shown in the third image can be accessed by lifting the cover flap off.)

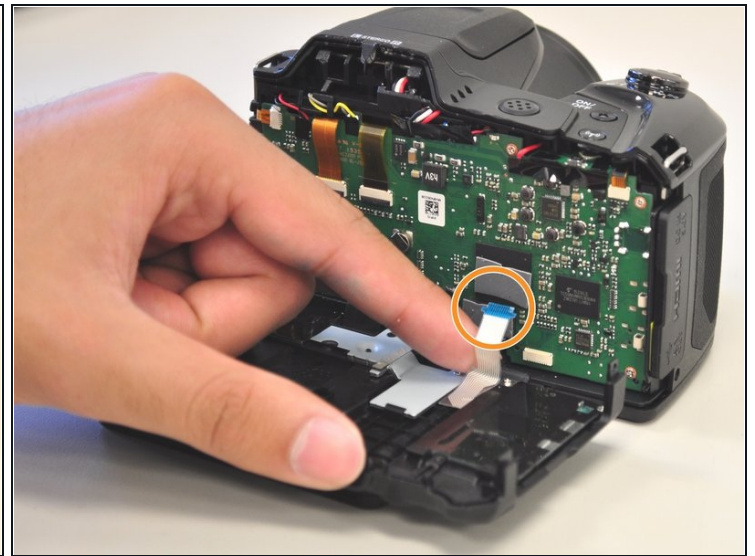
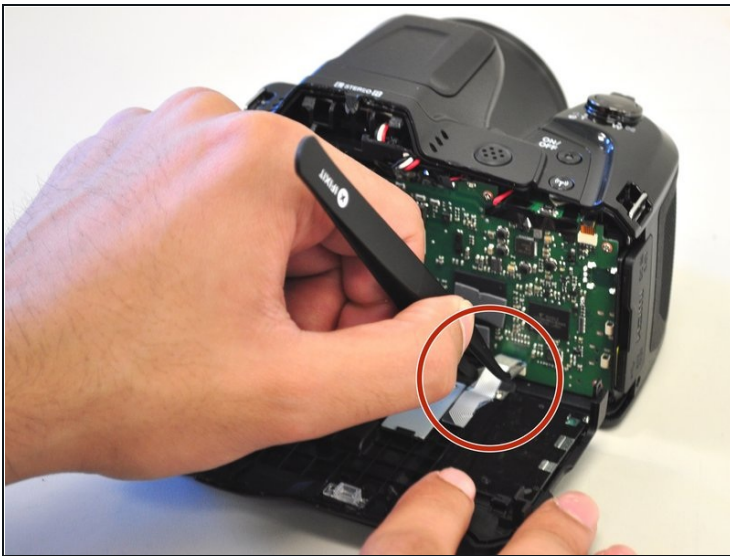
## Step 2



- Pry case open with a metal spludger by slipping the spludger between the back and front case of the camera and wiggling the spludger forwards and backwards.

⚠ Be careful not to damage the inner components of the camera when slipping the spludger into the camera.

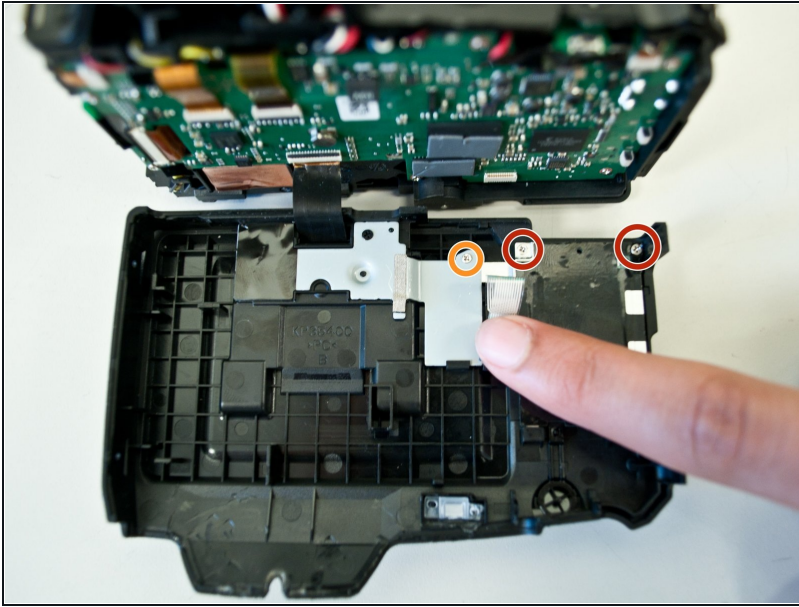
## Step 3



- Carefully unhook the silver strip with [tweezers](#). Get a grasp of the sides of the silver strip with the tweezers, and pull upwards and out.
- The strip may also be identified by its blue tip, which becomes more visible once pulled out.

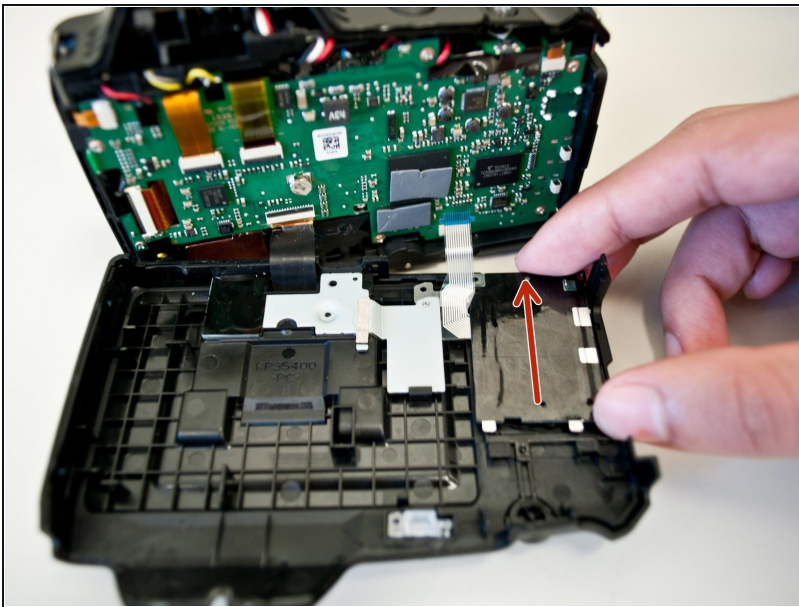


## Step 4 — Buttons



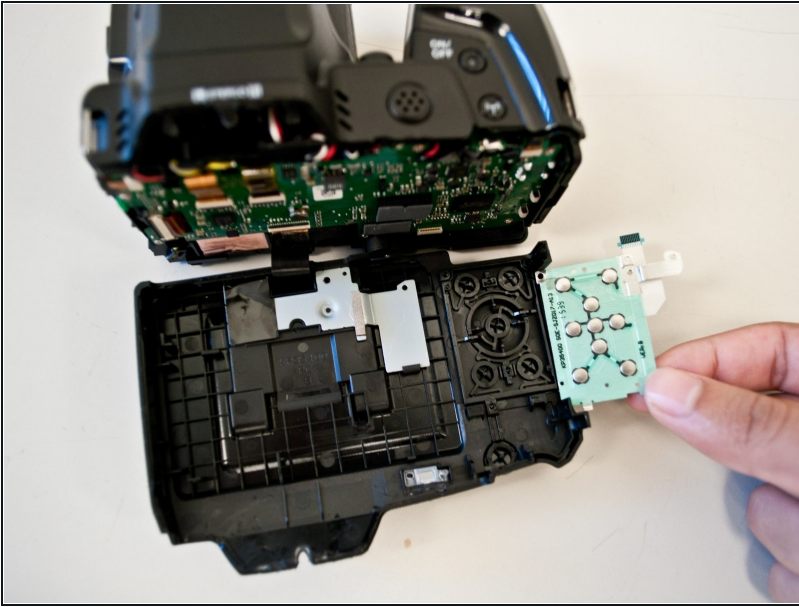
- Unscrew the two, right-most, 2 mm screws with a Philips 000.
- Unscrew the left-most, 4 mm screw with a Philips 000.

## Step 5



- Slide off the button panel in the marked direction.

## Step 6



- Flip to the front side of the button panel to access the button sensors.

---

To reassemble your device, follow these instructions in reverse order.