



Sonos Play 3 Front Speaker Panel Replacement

Prerequisite Only

Written By: Christina Santini



INTRODUCTION

Prerequisite Only



TOOLS:

- [Phillips #2 Screwdriver](#) (1)
-

Step 1 — Front Speaker Panel



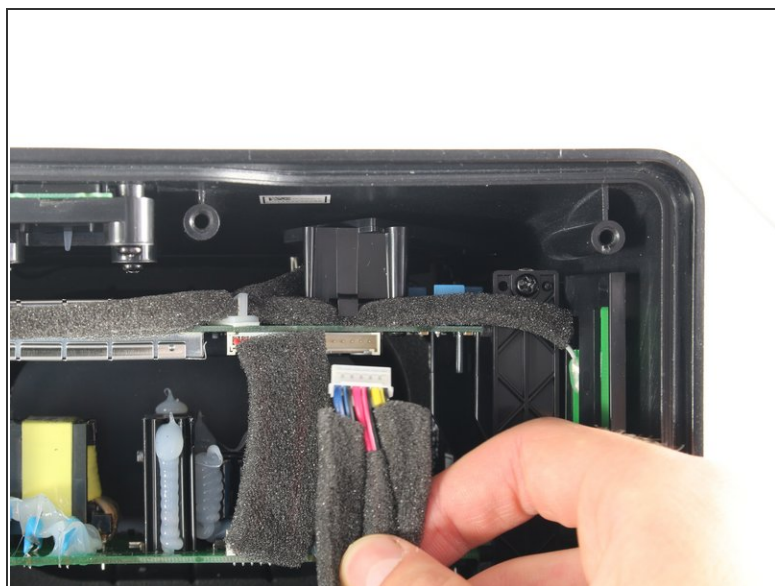
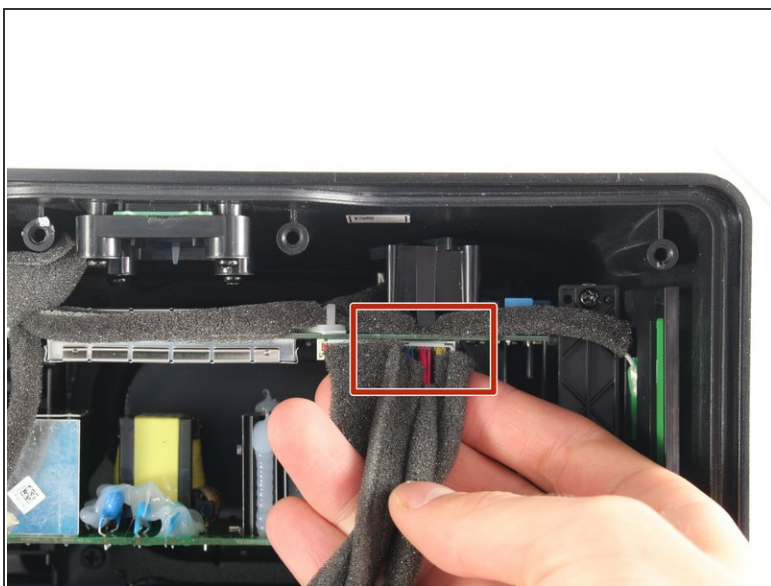
- Unscrew eight 1.5 inch Phillips #2 screws attaching the front speaker panel to the box.
- Unscrew the single 1 inch Phillips #2 screw located on the left side of the panel. This may be hidden beneath the warranty void sticker that you'll want to remove.
- Unscrew the single 3/4 inch Phillips #2 screw, which is the last thing holding the front panel to the casing.

Step 2



- Remove the front panel carefully.
- ⓘ Note that there are two layers to the panel that should stay in their original order.

Step 3



- Disconnect the front panel from the motherboard by gently reaching in and pushing the tab underneath the wire connector and pulling towards you.

Step 4



- Gently remove the wireless card located at the bottom of the front speaker panel by pulling up and out with your index finger and thumb.

To reassemble your device, follow these instructions in reverse order.