



# HMDX Chill Motherboard Replacement

This guide will show how to replace the motherboard of the HMDX Chill.

Written By: Jourdan Holubasch



## INTRODUCTION

When the HMDX Chill is not functioning and all other attempts at fixing the issue have been made, the issue will most likely be located in the motherboard. This guide will show how to locate and replace the motherboard of the HMDX Chill.

---

### TOOLS:

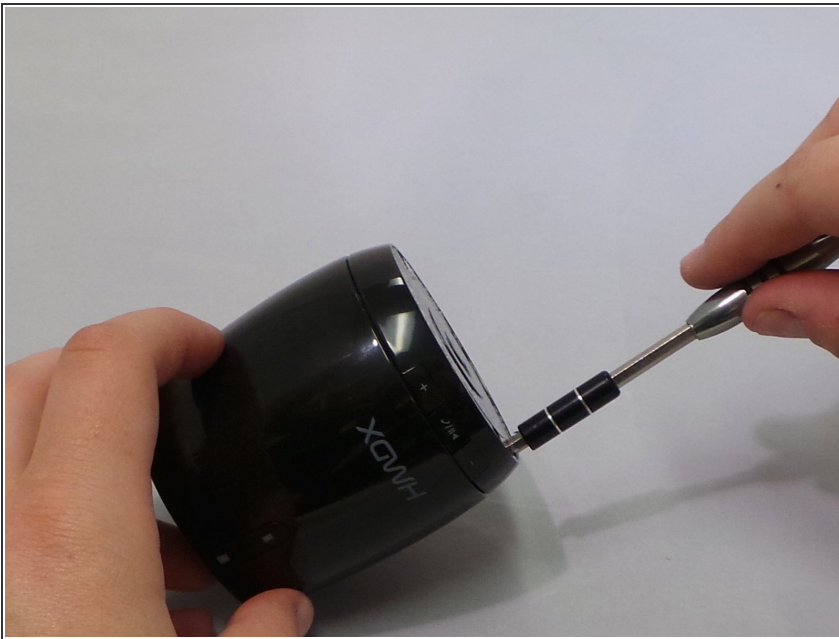
- [Metal Spudger](#) (1)
  - [Phillips #1 Screwdriver](#) (1)
  - [Soldering Workstation](#) (1)
-

## Step 1 — Remove Rubber Base



- Insert a metal spudger under the rubber base.
- Pry the rubber base off.

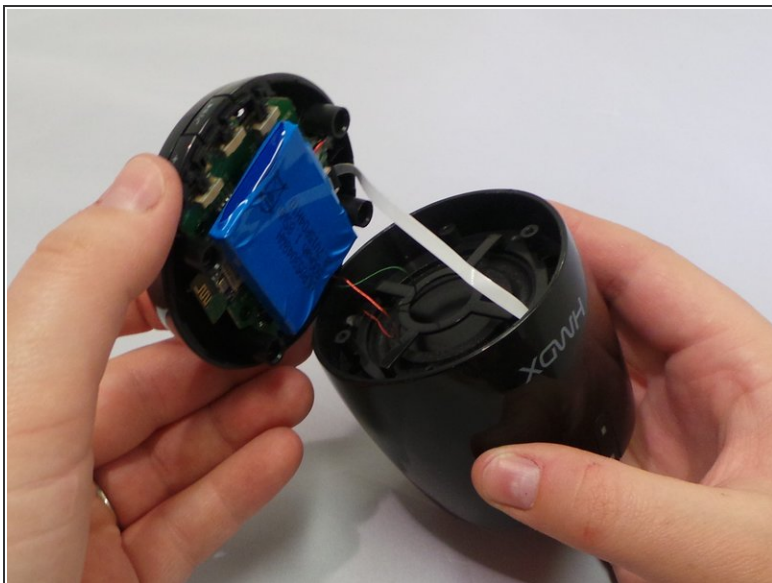
## Step 2



- Use a Phillips #1 screwdriver to remove four 9 mm screws from the base of the device.

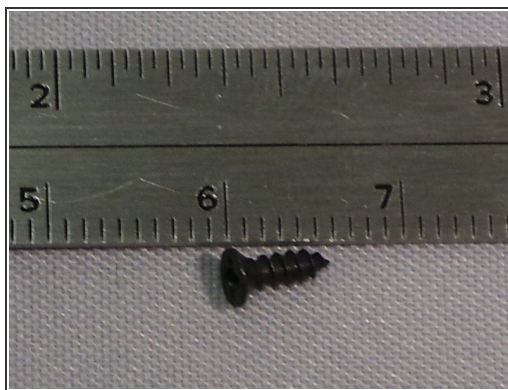
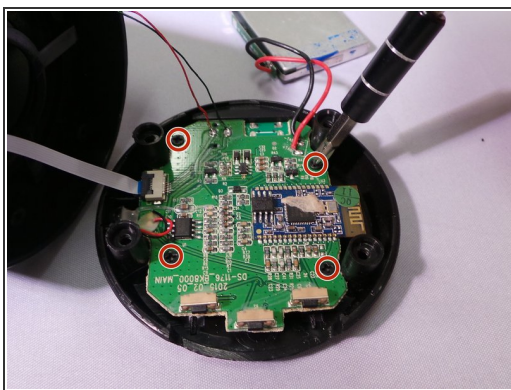


## Step 3



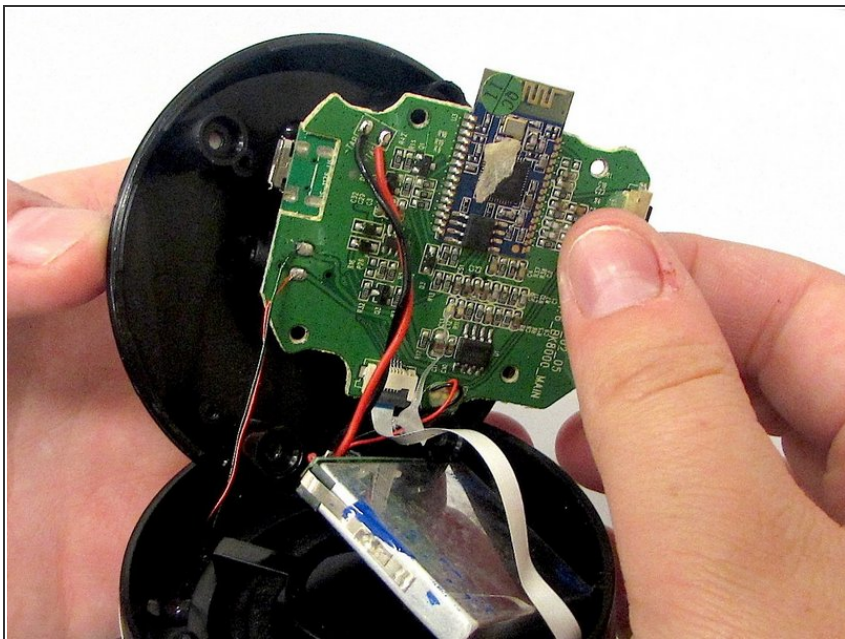
- Grip the base of the HMDX Chill.
- Pull the base upwards.

## Step 4 — Motherboard



- Use a Phillips #1 screwdriver to remove the four 6 mm screws that secure the motherboard to the base of the device.

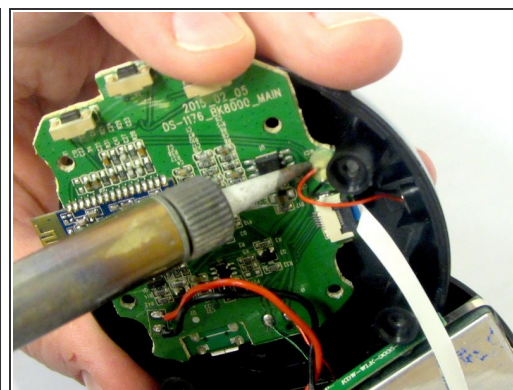
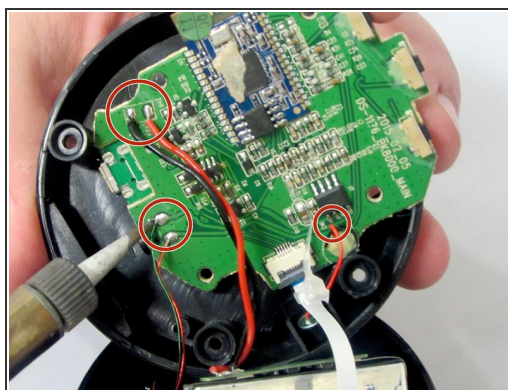
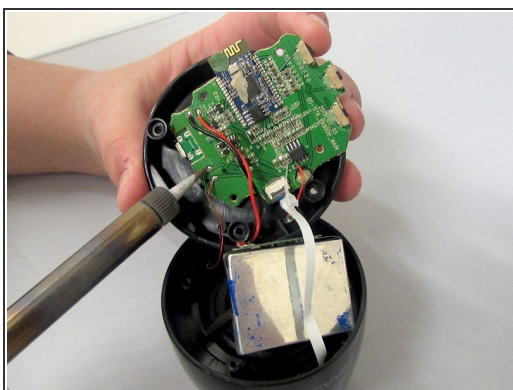
## Step 5



- Pull the motherboard away from the base gently.

⚠ Do not pull too hard on the motherboard. It is still attached to the base by wires.

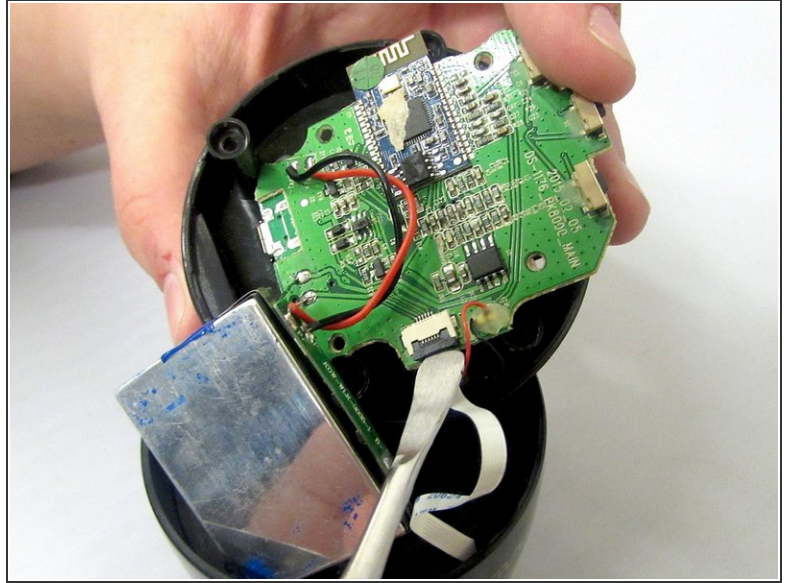
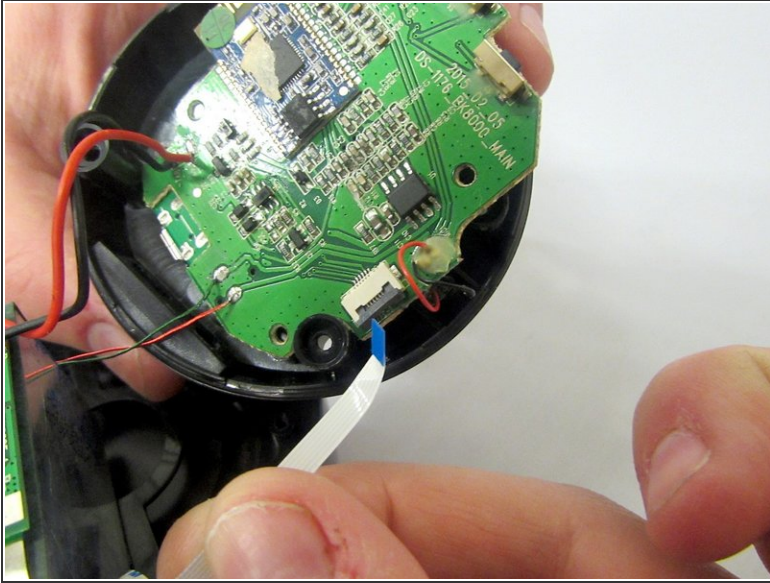
## Step 6



- Use a soldering iron to [desolder](#) the wires connecting the motherboard to the case.

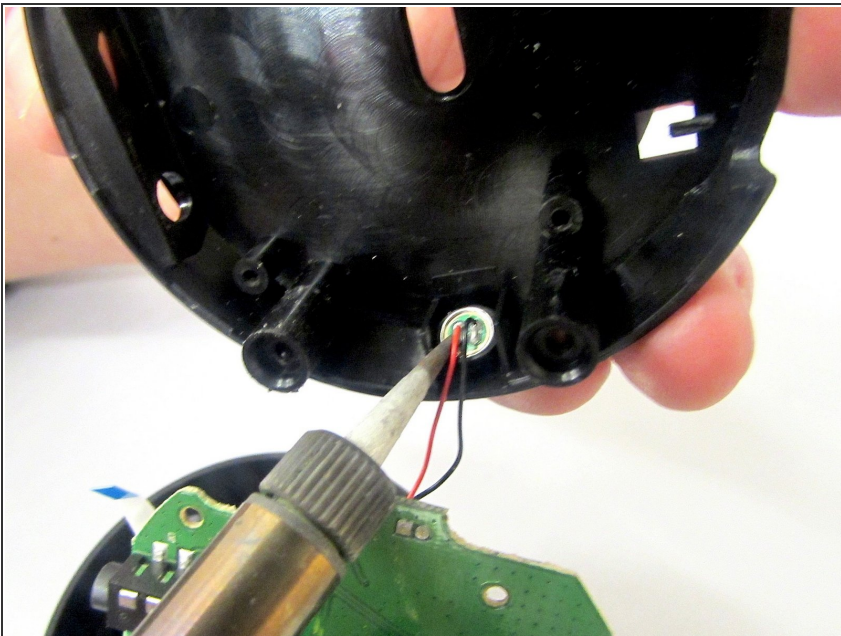


## Step 7



- Insert the spudger between the case and the wire and move the spudger upwards.
  - ⓘ This will cause the case to prop open.
- The wire behind the motherboard will now be visible. Pull this out from behind.

## Step 8



- Use the soldering iron to desolder the wires connecting the motherboard to the base of the HMDX Chill.

To reassemble your device, follow these instructions in reverse order.