



# HMDX Chill Front Buttons Replacement

If the buttons on the HMDX Chill no longer...

Written By: Jourdan Holubasch



## INTRODUCTION

If the buttons on the HMDX Chill no longer function properly, you will need to disassemble and replace the buttons. This guide will walk you through removing the buttons from the HMDX Chill without breaking them. This guide also gives you information on how to replace new buttons easily.

---

### TOOLS:

- [Metal Spudger](#) (1)
  - [Phillips #1 Screwdriver](#) (1)
  - [Probe and Pick Set](#) (1)
-

## Step 1 — Remove Rubber Base



- Insert a metal spudger under the rubber base.
- Pry the rubber base off.

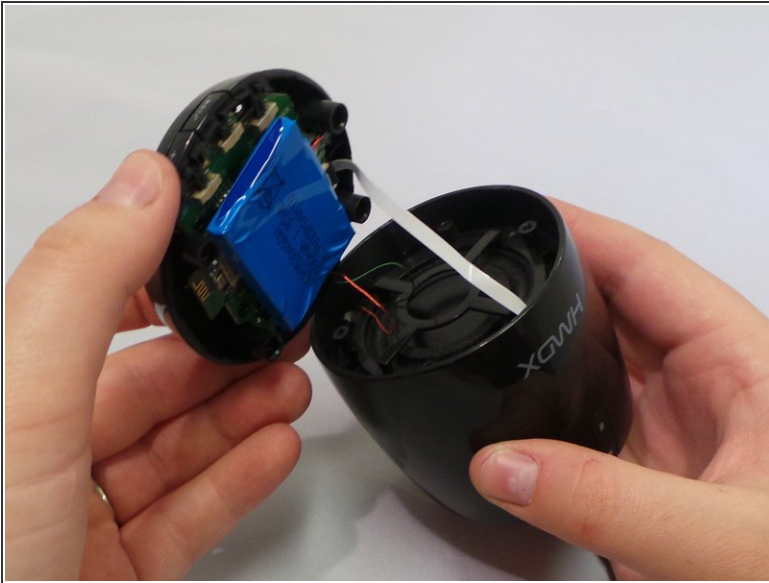
## Step 2



- Use a Phillips #1 screwdriver to remove four 9 mm screws from the base of the device.

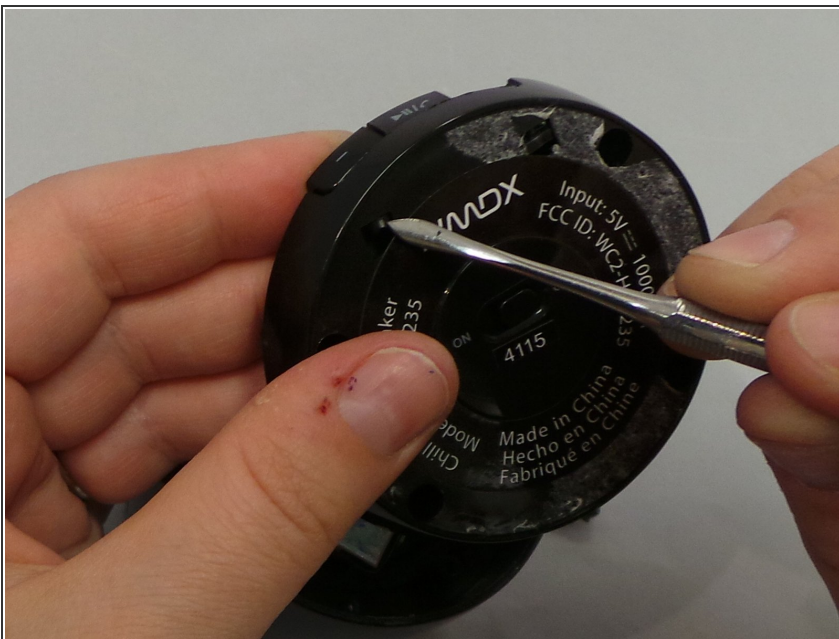


## Step 3



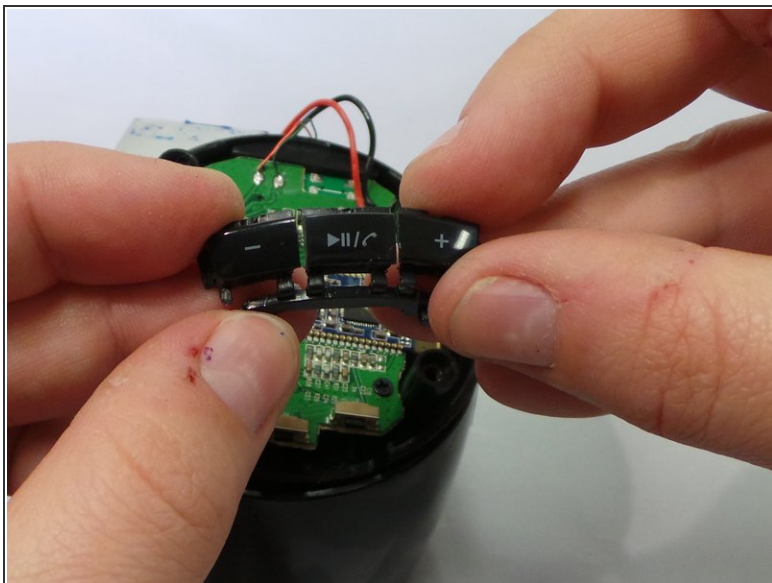
- Grip the base of the HMDX Chill.
- Pull the base upwards.

## Step 4 — Front Buttons



- Using a metal spudger, push the small latch upwards towards the button from the bottom of the base.
- ⓘ These are located underneath the rubber base, prior to removal.

## Step 5



- Insert a spudger into the slit between the bottom of the buttons and the speaker base.
- Push the buttons upwards, away from the base, until they come loose.
- Use your hand to pull the linked buttons off the base.

To reassemble your device, follow these instructions in reverse order.