



HMDX Chill Disassembly

This guide will show how to disassemble the HMDX Chill Speaker.

Written By: Jourdan Holubasch



INTRODUCTION

If your HMDX Chill is having any kind of issue this guide will show how to disassemble the device in order to begin the process of fixing your issues.



TOOLS:

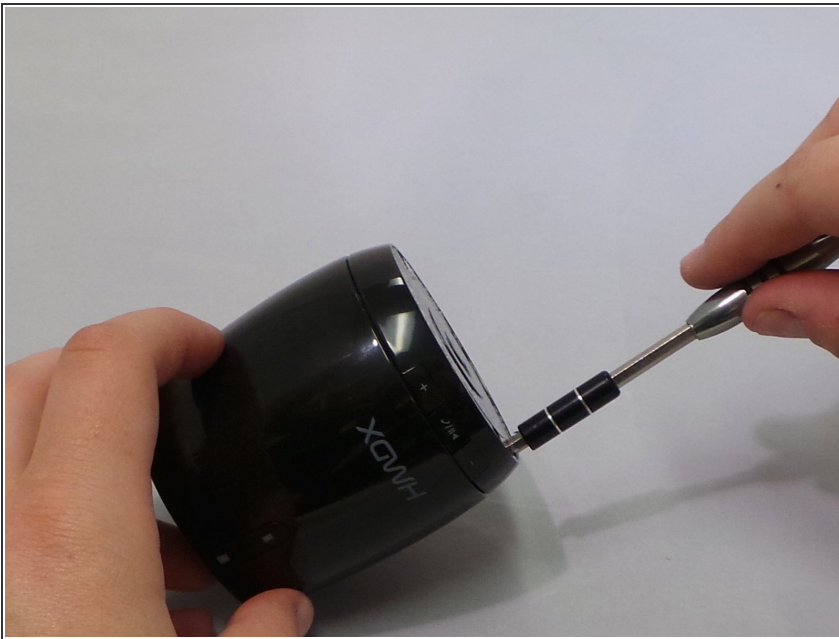
- [Phillips #1 Screwdriver](#) (1)
 - [Metal Spudger](#) (1)
-

Step 1 — Remove Rubber Base



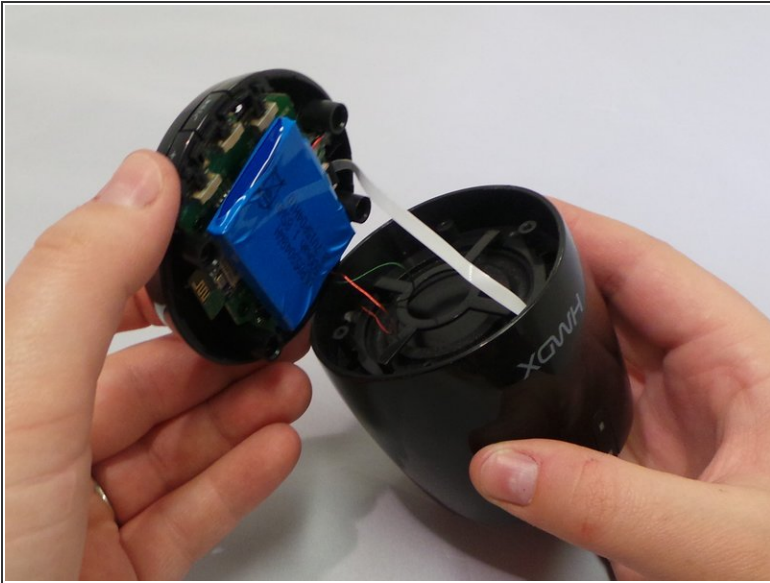
- Insert a metal spudger under the rubber base.
- Pry the rubber base off.

Step 2



- Use a Phillips #1 screwdriver to remove four 9 mm screws from the base of the device.

Step 3



- Grip the base of the HMDX Chill.
- Pull the base upwards.

To reassemble your device, follow these instructions in reverse order.