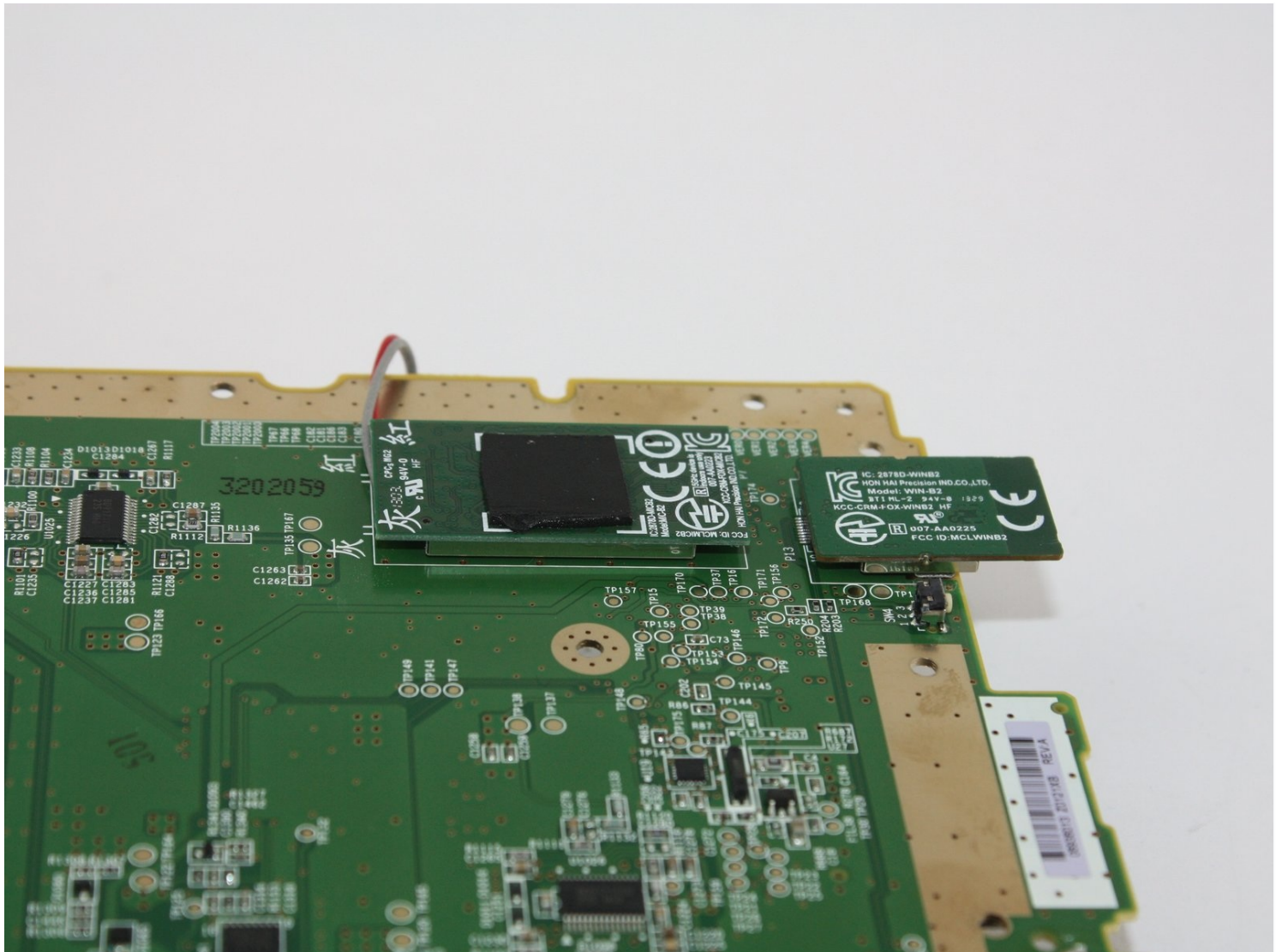




Nintendo Wii U Wireless and Bluetooth Module Replacement

Use this guide to learn how to replace the...

Written By: Jana Miles



INTRODUCTION

Use this guide to learn how to replace the wireless Local Area Network (LAN) modules in the Nintendo Wii U. This includes the Broadcom 2878D-MICB2 Wireless 2.4Ghz Module and Broadcom 2878D-WINB2 Bluetooth 4.0 Module. This guide requires careful attention to the circuit boards, internal components, and adhesives during disassembly. Use of the tools listed will aid in this guide.

TOOLS:

Spudger (1)
Phillips #0 Screwdriver (1)
Phillips #1 Screwdriver (1)
Y1 Tri-point Screwdriver (1)

PARTS:

Nintendo Wii U GamePad Wi-Fi Board (1)

Step 1 — Wireless 2.4ghz Module and Bluetooth Module



- Locate the black or white stickers on the underside of the unit. A spudger will be used to remove these stickers to reveal 9 screws.

Step 2



- Remove the five Phillips #0 screws.
- Remove the four Tri-Wing (Y1) screws.

Step 3



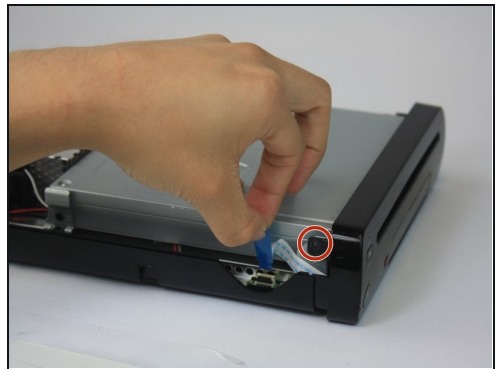
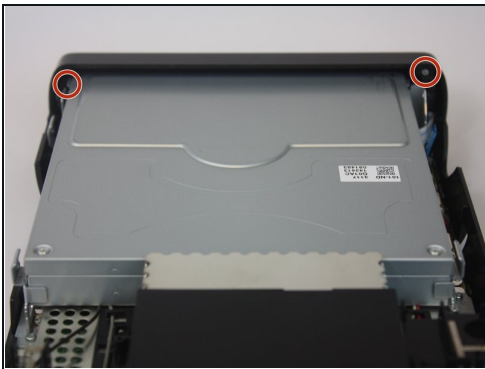
- Remove the CMOS battery door on the left side of the console.
- Remove the three Y1 Tri-Wing screws.

Step 4



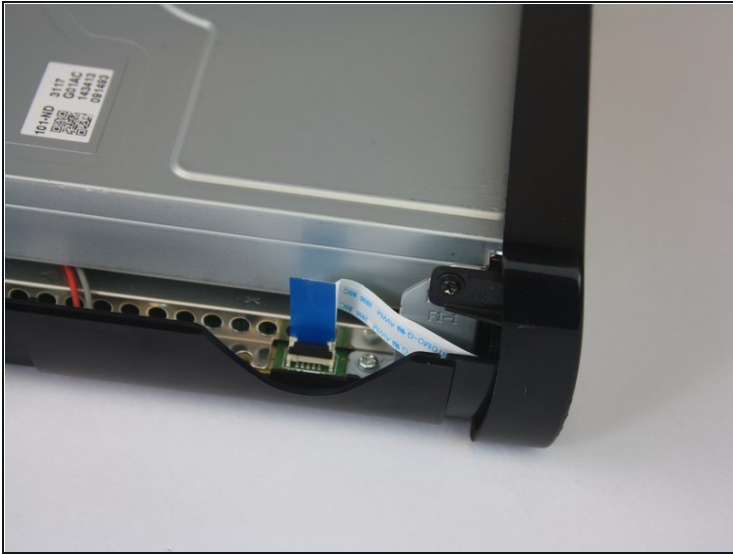
- Gently pry off the top lid of the Wii U.

Step 5



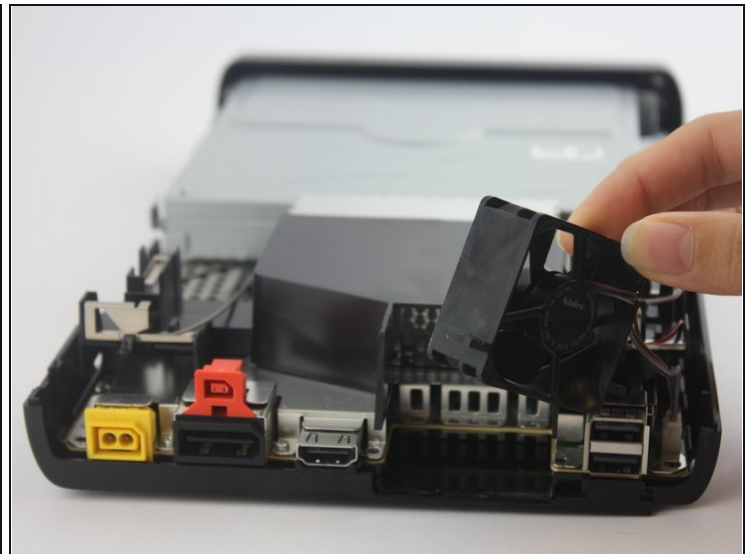
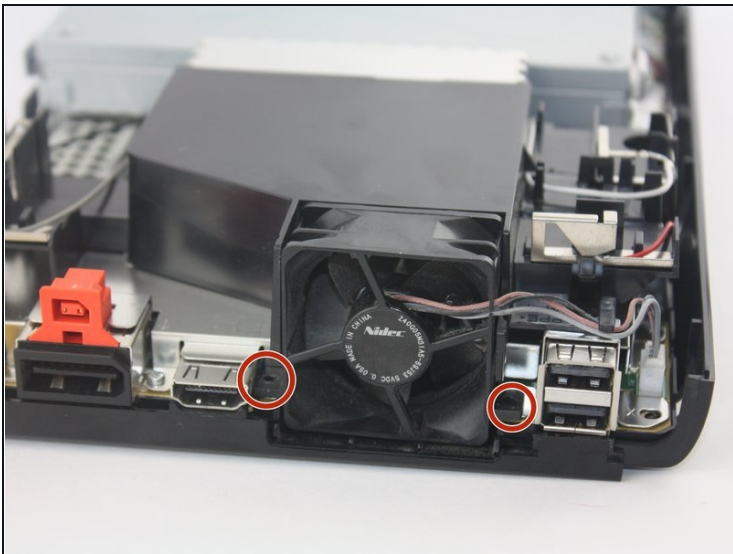
- Rotate the device so that the front plate is facing you.
- Remove the two Phillips #1 screws that connect the front plate to each side of the device.

Step 6



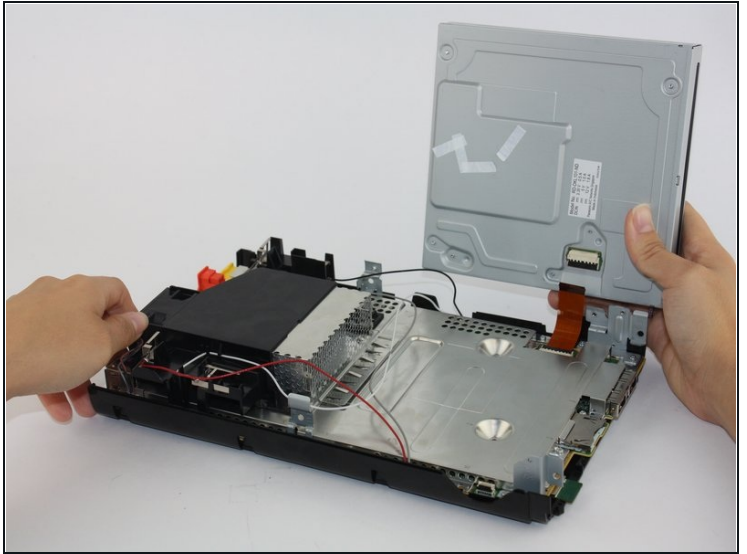
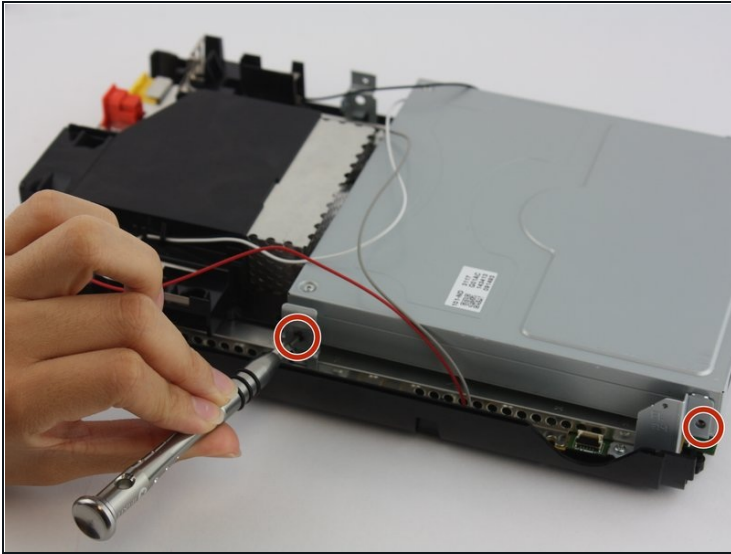
- Remove the ribbon cable from the unit.
- Separate the front plate from the main console.

Step 7



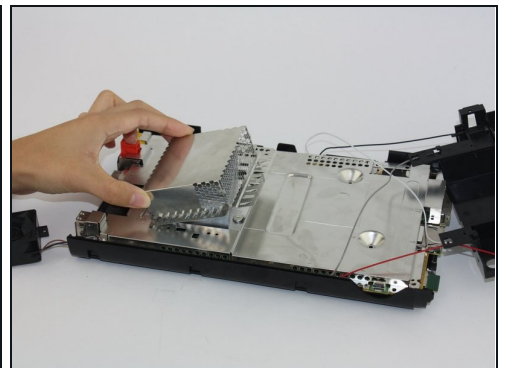
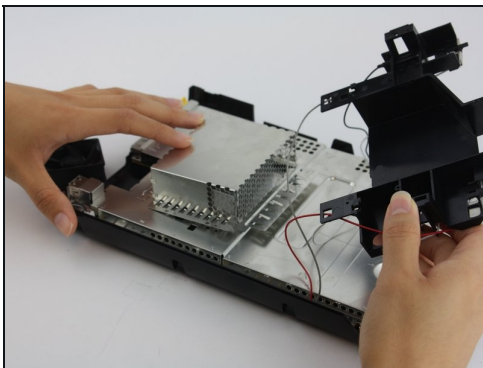
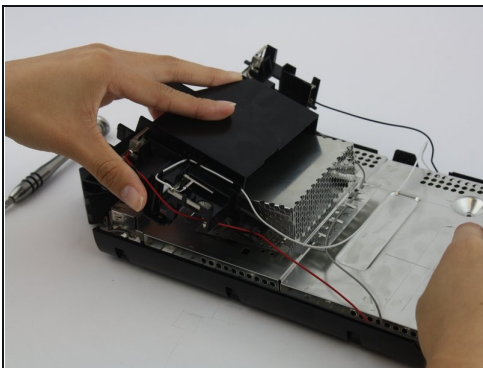
- Remove the fan with a Phillips #1 by unscrewing the two connecting screws on both sides of the fan. The fan's wires will still be attached to the motherboard as it is permanently affixed.

Step 8



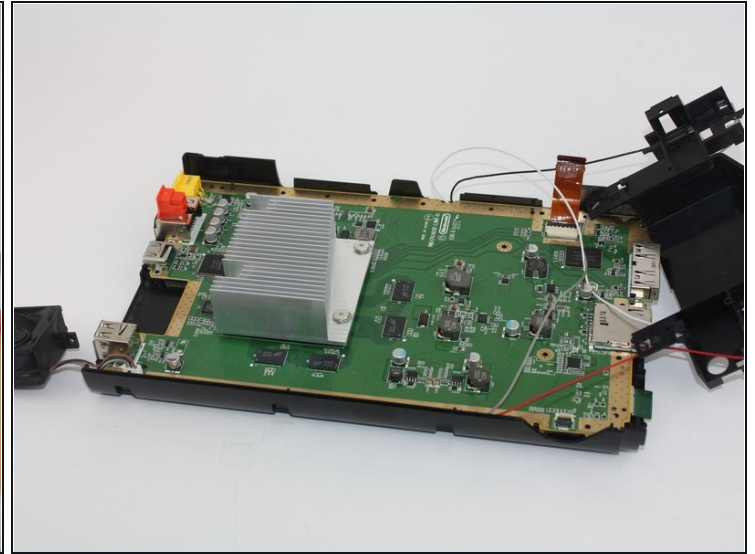
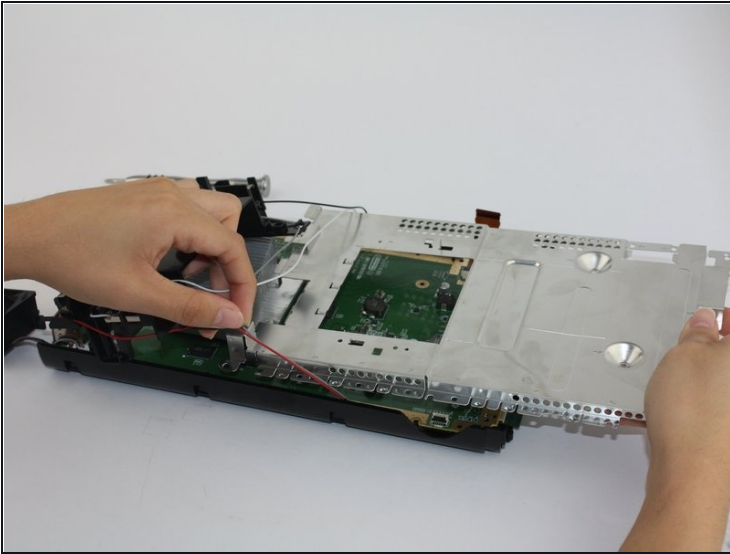
- Using a Phillips #0 screwdriver, unscrew the four screws (two on each side) from the disc reader connecting it to the main console and remove disc reader.

Step 9



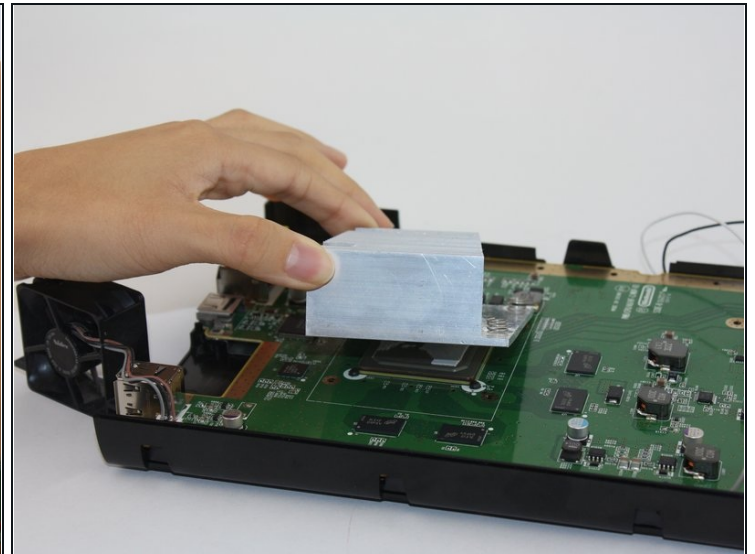
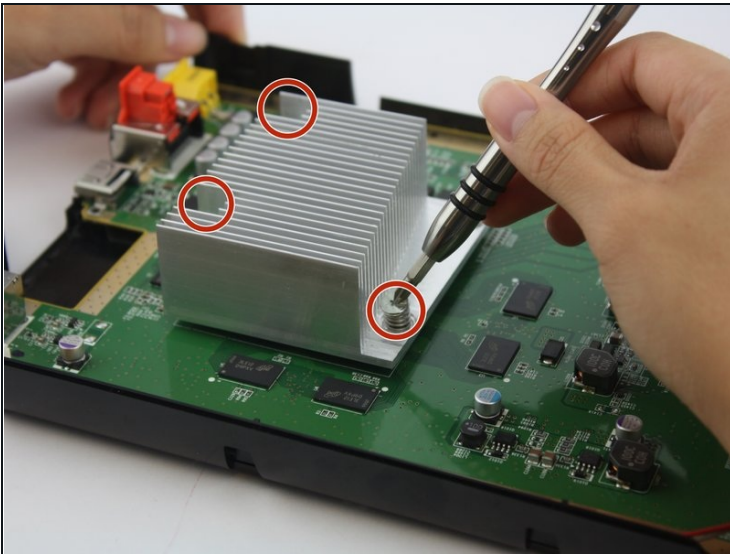
- Unscrew and remove the heatsink. You will have to carefully move the antenna cables out of the way in order to remove the heatsink shielding.

Step 10



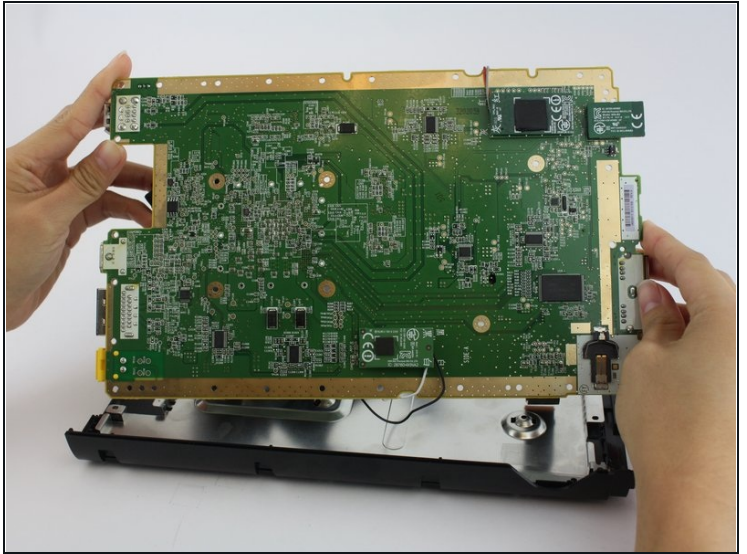
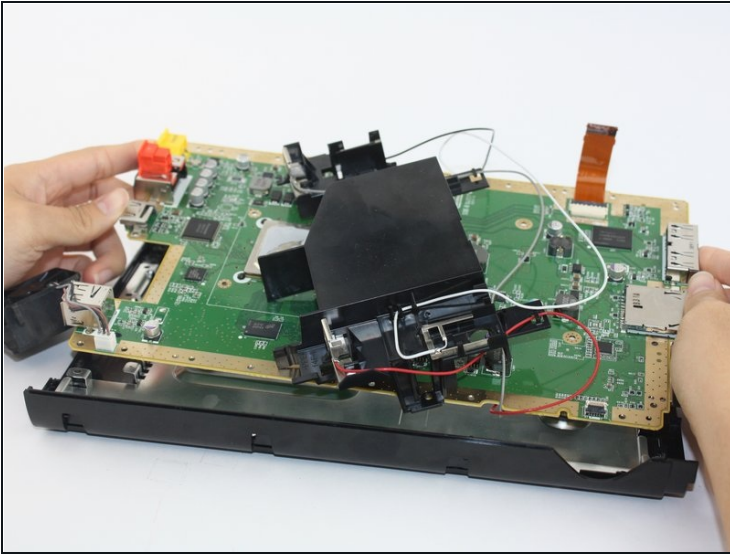
- Using a Phillips #1 unscrew all floor screws connecting the outer plate from the circuit board to remove the circuit board.

Step 11



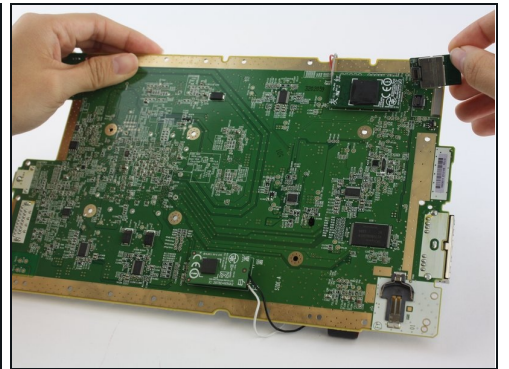
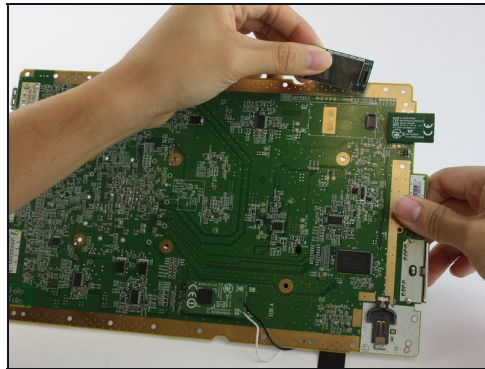
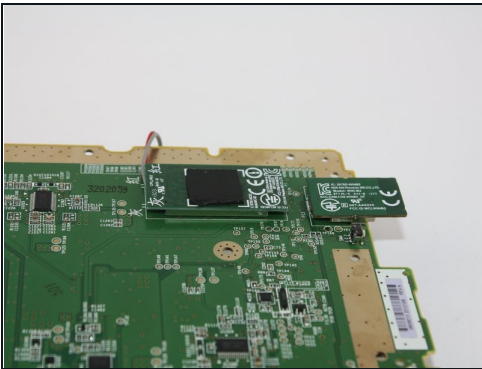
- Using a Phillips #1 unscrew the 4 screws securing the heatsink to the motherboard and remove the heatsink.

Step 12



- Locate the screws lining the perimeter of the motherboard that you will remove with a Phillips #1 screwdriver. Once they are unscrewed, the motherboard should easily separate from the lower tray.
- Once the motherboard is detached, flip it over to view the wireless modules.

Step 13



- Pull up gently on the wireless modules to avoid breakage.

To reassemble your device, follow these instructions in reverse order.