



# DeWalt DWD112 Chuck Replacement

Replace a damaged or broken chuck in your DeWalt DWD112 drill.

Written By: Joe Echelmeier



---

## INTRODUCTION

The chuck holds the drill bit in place—and if the chuck becomes broken, the drill serves no function. Use this guide to replace a damaged or broken chuck in the DeWalt DWD112.

---



### TOOLS:

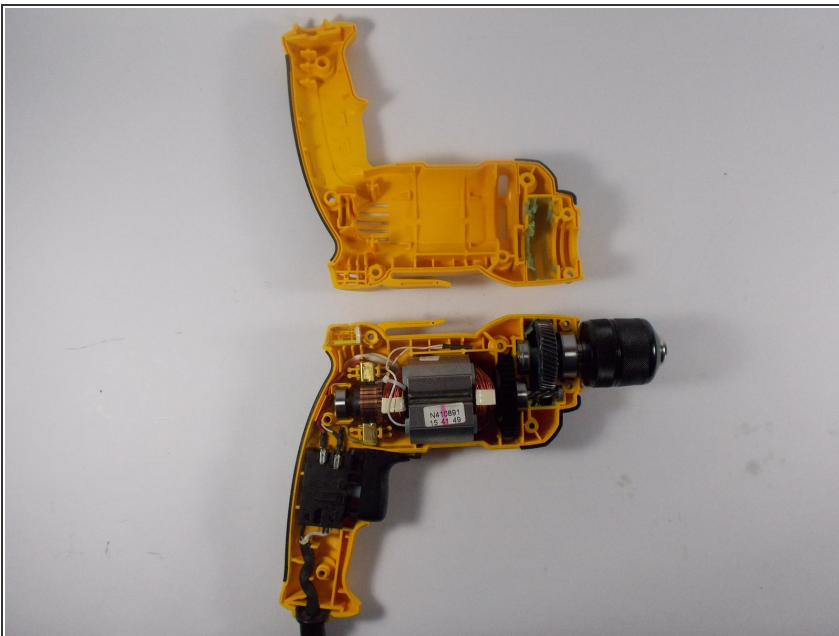
- [T20 Torx Screwdriver](#) (1)
-

## Step 1 — Chuck



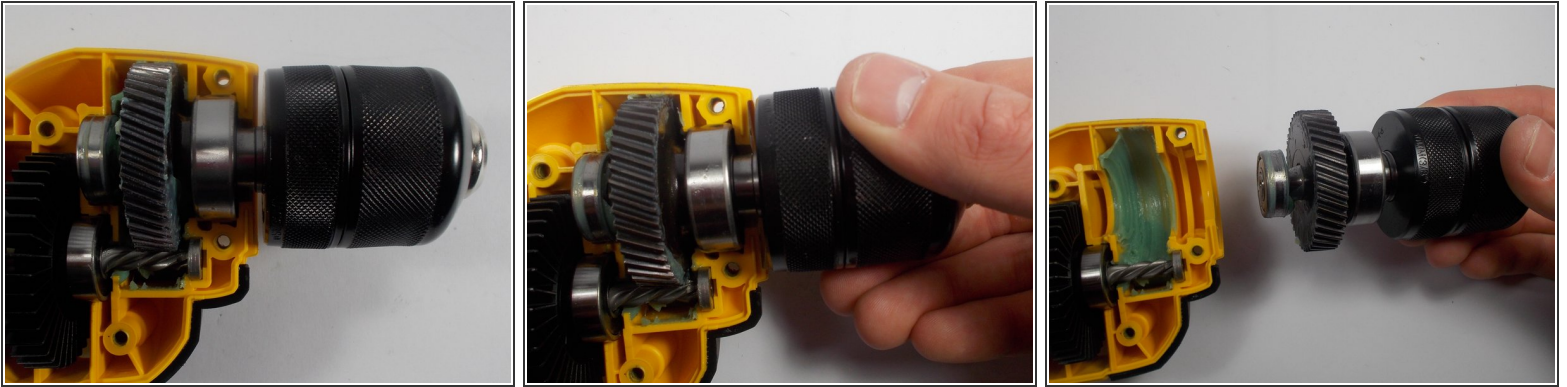
- Remove seven TR20 Torx Security screws from the side of the drill.


## Step 2



- Remove the top cover to reveal the inside of the drill.
- Set the top cover of the drill aside.

### Step 3



 Take note of the gears meshed together.

- Grab the metal chuck by the rotating spindle as if you are to tighten in a drill bit.
- Remove the chuck assembly from the drill.

To reassemble your device, follow these instructions in reverse order.