



Fellowes Laminator Jupiter CRC 57018 heating

Disassembly and some hints to replace broken heating resistors

Written By: jean huens



INTRODUCTION

Repair is complicated because no spare parts could be found.



TOOLS:

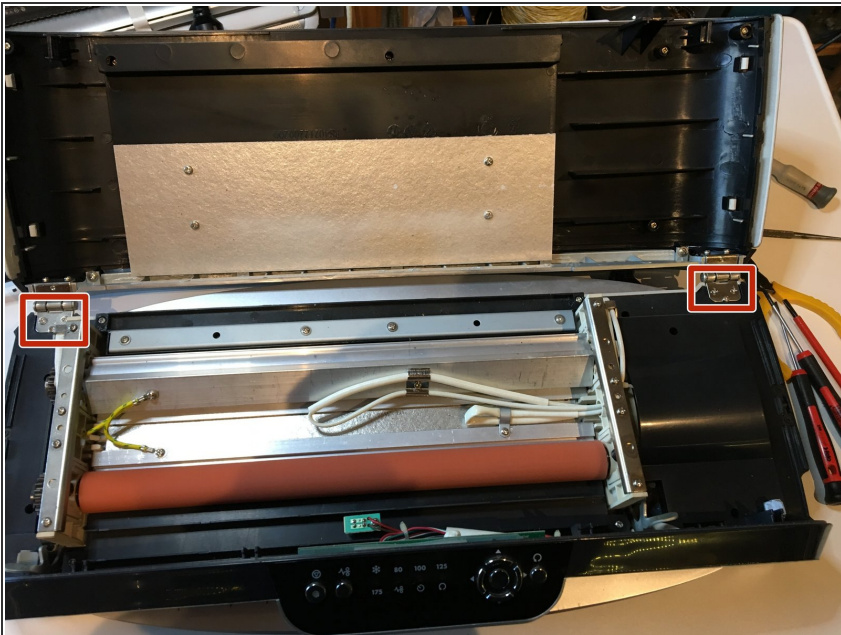
- [Essential Electronics Toolkit](#) (1)
 - [Multimeter](#) (1)
-

Step 1 — Opening the cover.



- Opening the cover : push buttons on the left and right side. The right side has a coil to prevent opening under power and can get stuck.

Step 2 — Cover removal



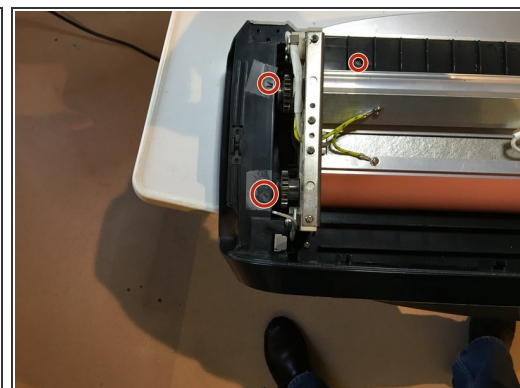
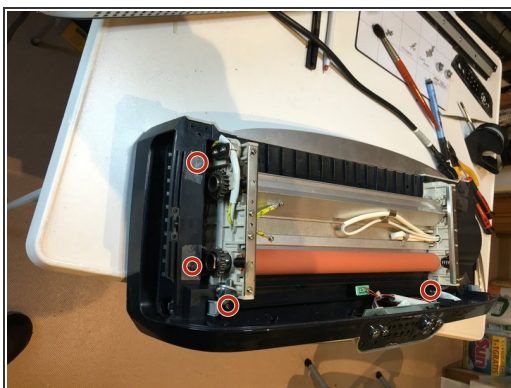
- remove the 4 flat and 2 screws.

Step 3 — Remove key panel



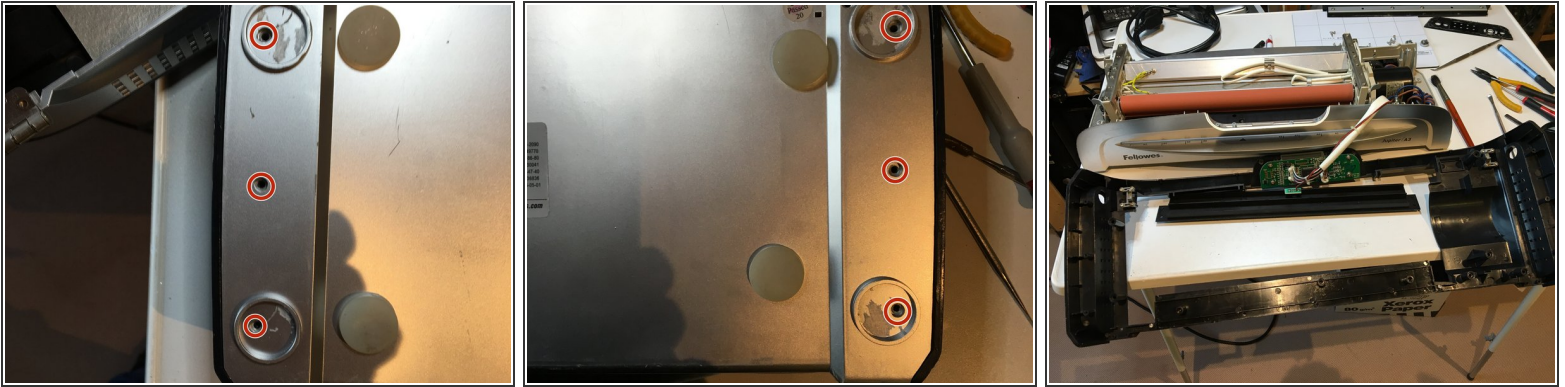
- Gently remove glued key panel
- Remove 4 little screws behind the bottom of the panel

Step 4 — Remove inside cover (upside)



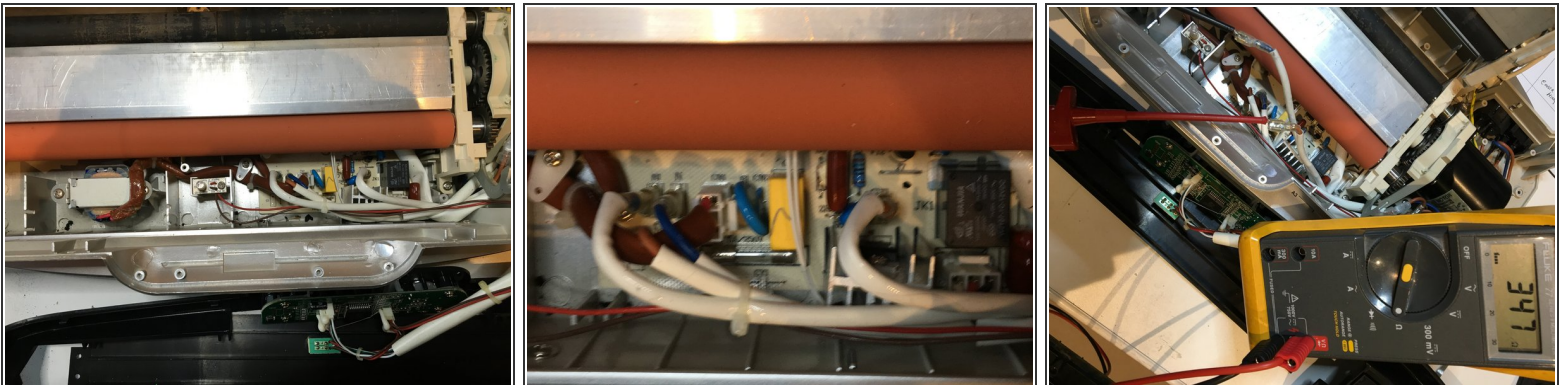
- Remove screws upper side (some markers may be missing)

Step 5 — Remove inside cover(bottom side)



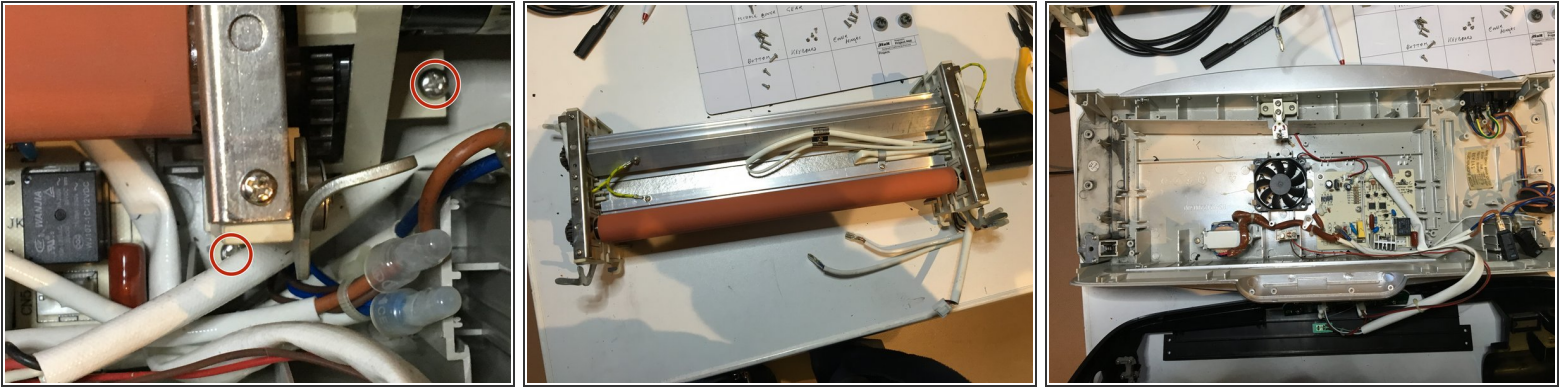
- Turn laminator upside down and remove 6 bottom screws
- When all screws are removed the inside cover can be lifted up
- Remove the panels with led in front of the orange roll (sorry no picture).

Step 6 — Test Heating resistors



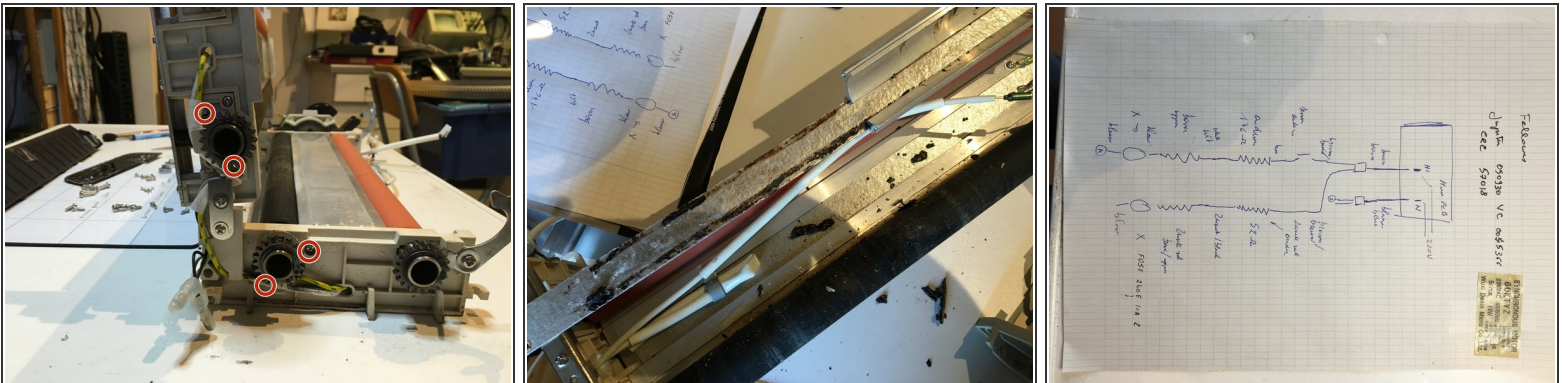
- You now have access to the inside
- To measure the heating resistors detach the brown and blue wires leading to the roller assembly. Not the ones coming from the power cable and microswitches.
- Ohmmeter result:
 - 80 ohm : everything OK
 - 340-350 ohm : main heating circuit (above and under black rollers) broken
 - 100 Ohm : preheating (horizontally between orange and black rollers) broken

Step 7 — Motor and heating assembly removal



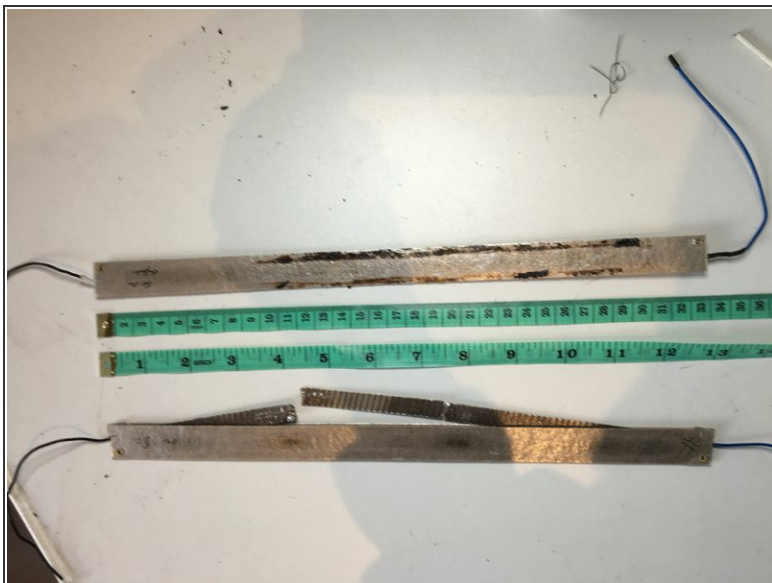
- There are six screws fixing the motor and heating assembly to the bottom. (only two show in picture). Remove them and lift the assembly free

Step 8 — Heating elements



- Heating elements are fixed on the left and right with two screws
- And the resistor can be slid out.
- This diagram helps detecting the faulty resistor.

Step 9 — Missing Spare Parts



- I was unable to find spare resistors. But since I had two identical laminators, both with a broken resistor above the upper black roll, repair was possible.
- Many thanks if somebody can point to a provider for these spare parts

To reassemble your device, follow these instructions in reverse order.