



ION Electric Ice Auger Safety Paddle Replacement

This guide will walk you through the process of replacing a broken safety paddle on your ION electric ice auger.

Written By: Grant Larson



INTRODUCTION

Use this guide to replace a broken safety paddle on your ION electric ice auger.



TOOLS:

- [T10 Torx Security Bit Screwdriver](#) (1)
- [Small Needle Nose Pliers](#) (1)



PARTS:

- [Stop Ion Switch PN 11712](#) (1)

Step 1 — ION Electric Ice Auger Safety Paddle



- ⚠ Before starting this repair, ensure that the battery has been removed from the power head.
- Removing the power head from the the auger makes manipulating the unit easier.

Step 2



- On the inside of the trigger side grip, locate the 3 T10 torque screws recessed into the grip.

Step 3



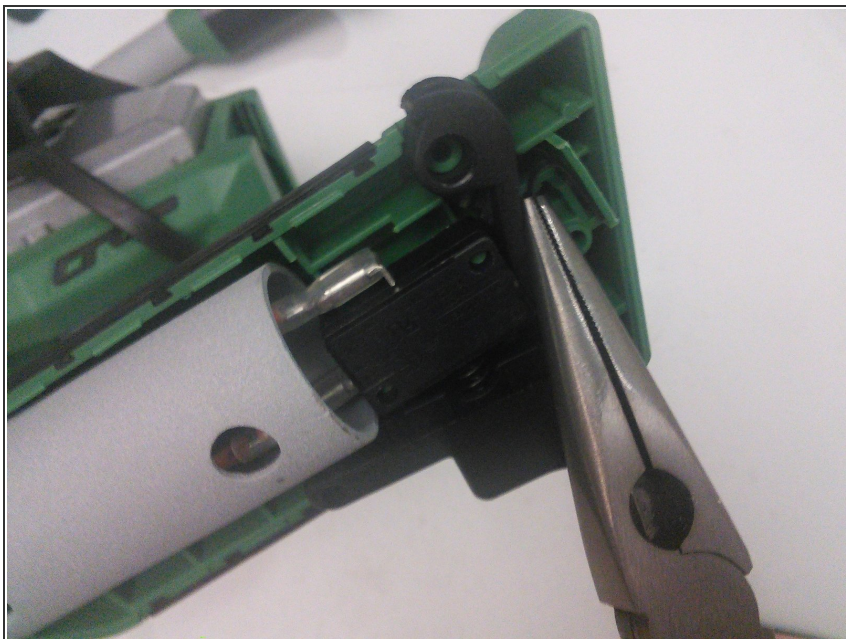
- With a T10 torque screw driver, remove the 3 screws.

Step 4



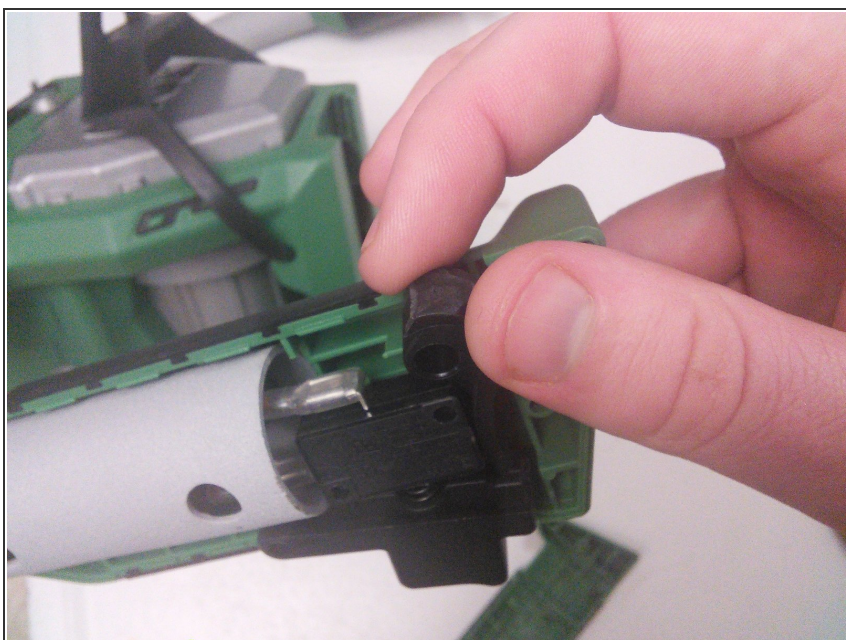
- Remove the outside half of the trigger side grip.

Step 5



- With a pair of needle nosed pliers, remove the safety paddle return spring.

Step 6



- Remove the broken safety paddle with your fingers.

To reassemble your device, follow these instructions in reverse order.