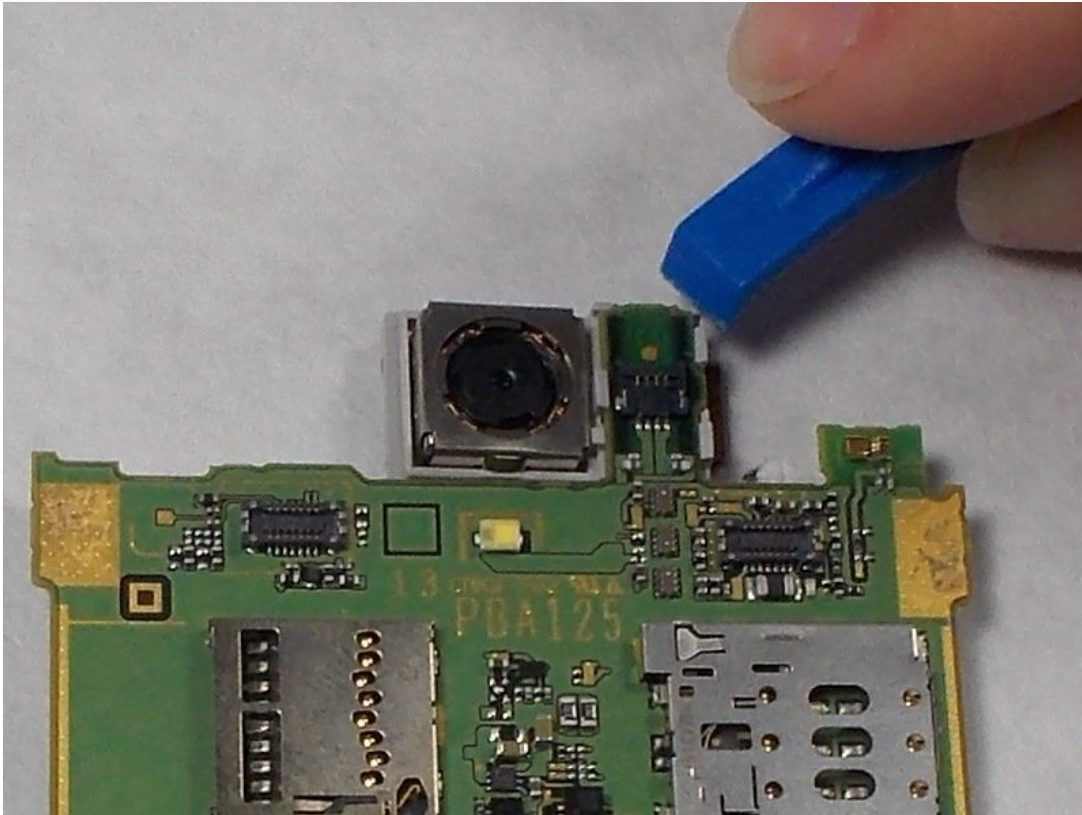




Sharp Aquos Crystal Rear Camera Replacement

If you cracked your camera lens or if it is not...

Written By: Felicia Imbriano



INTRODUCTION

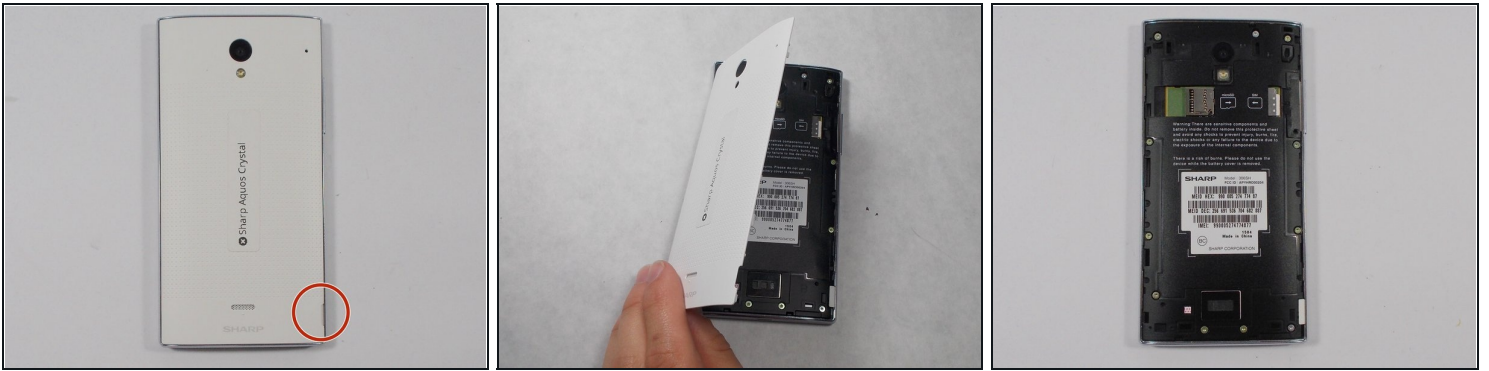
If you cracked your camera lens or if it is not working properly, you can replace it following this guide.

TOOLS:

[iFixit Opening Tool](#) (1)

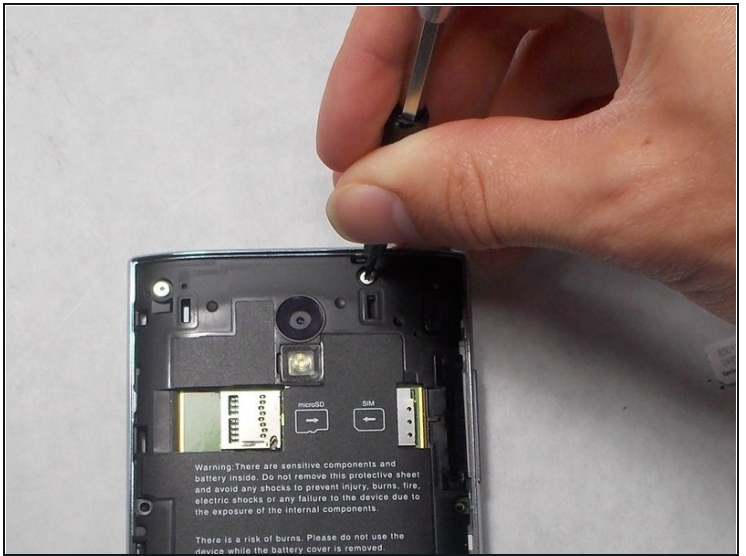
[Star Bit Screwdriver](#) (1)

Step 1 — Back Panel



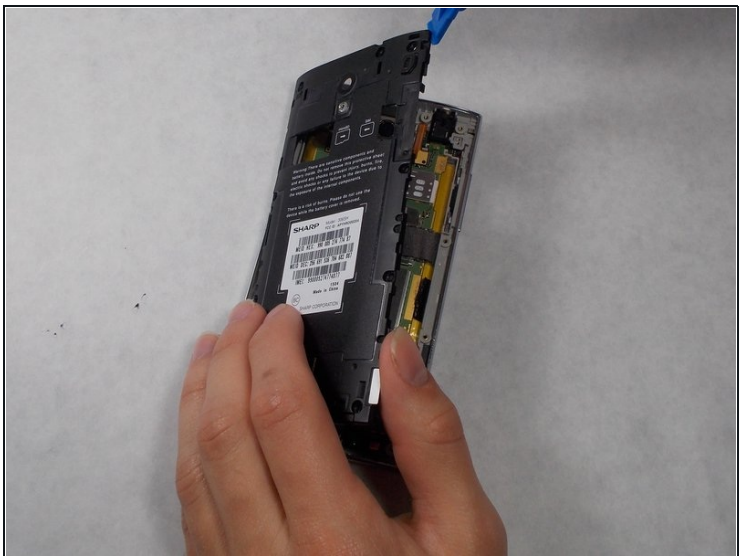
- Peel back the back cover of the phone from the access point to remove it. It should come off easily using your hands.

Step 2 — USB Port



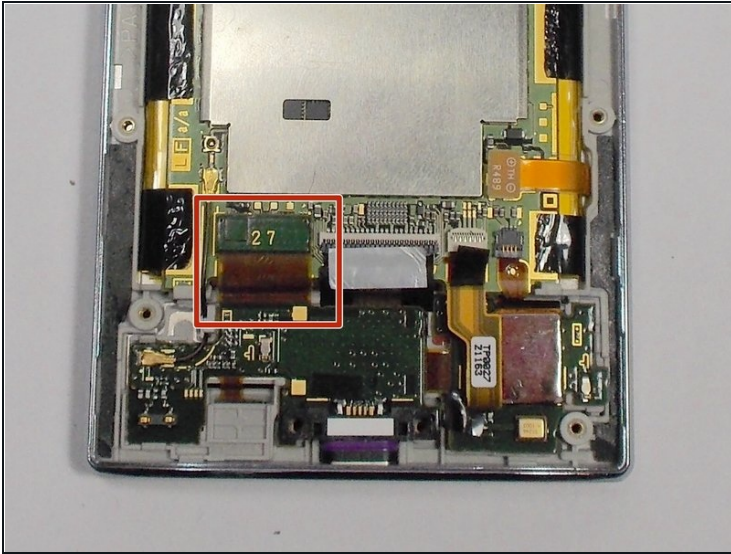
- Remove seven 3mm Star #5 screws shown in the picture with a screwdriver.
- Remove two 3.5mm Star #5 screws shown in the picture with a screwdriver.
- Remove two 5mm Star #5 screws shown in the picture with a screwdriver.

Step 3



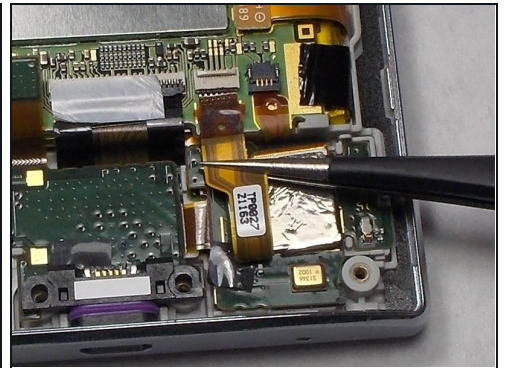
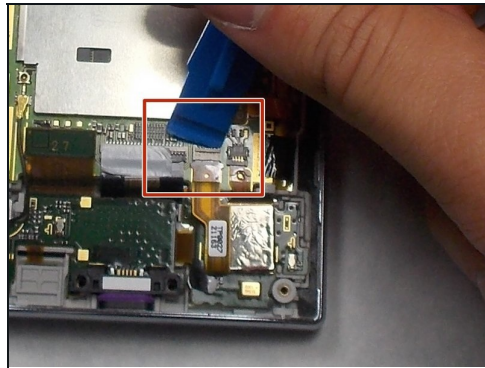
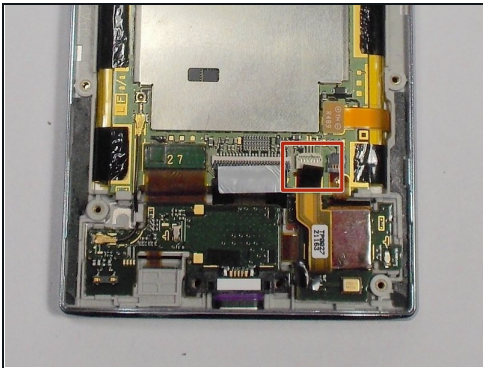
- Pry open the back panel using a plastic opening tool. Do this around the edges until you are able to lift it off.

Step 4



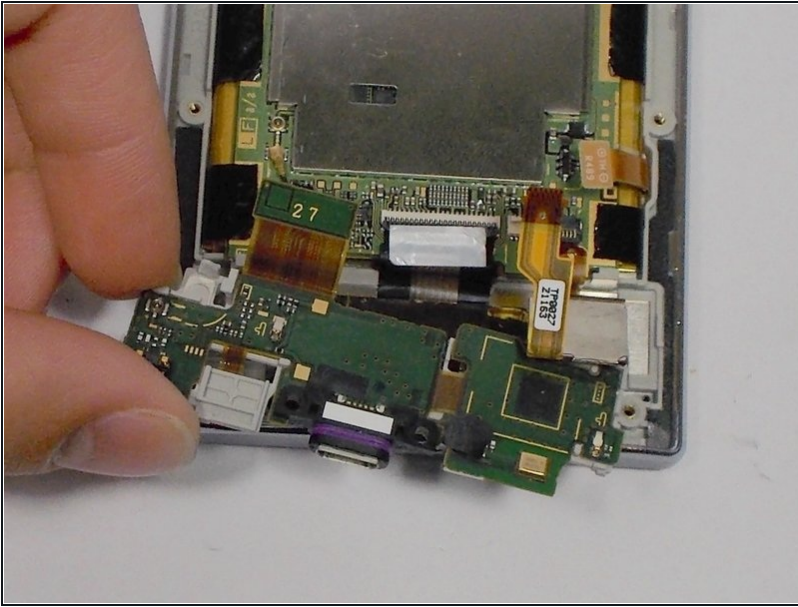
- Disconnect the wire by lifting it up with a plastic opening tool.

Step 5



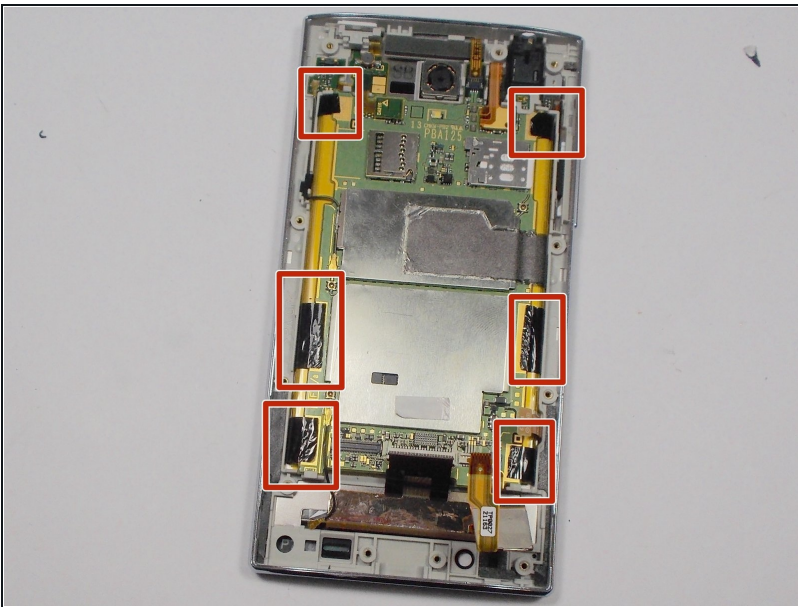
- To disconnect the cable, use the tip of a spudger or your fingernail to flip up the small retaining flap. Then, you can safely pull the ribbon cable out.

Step 6



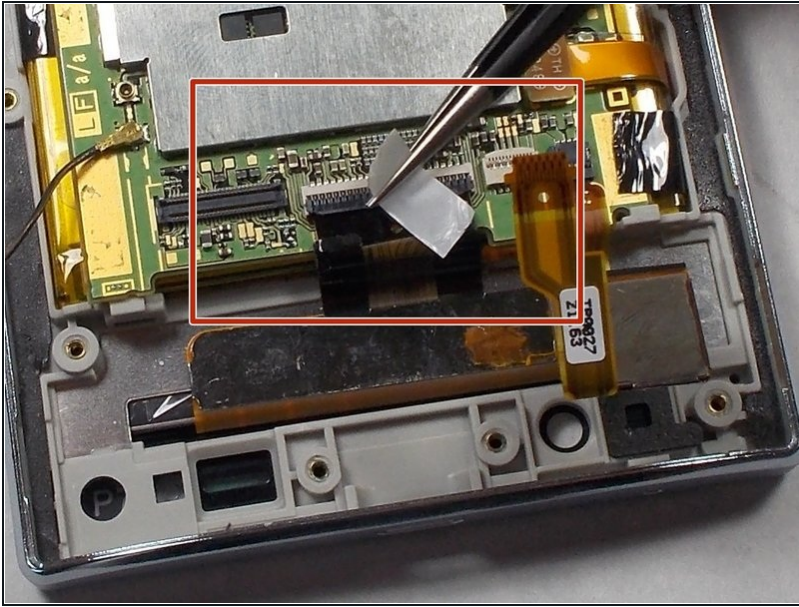
- After removing the wires, carefully snap out the usb port with your hands. It is held down by some plastic clips, so some force may be needed.

Step 7 — Motherboard



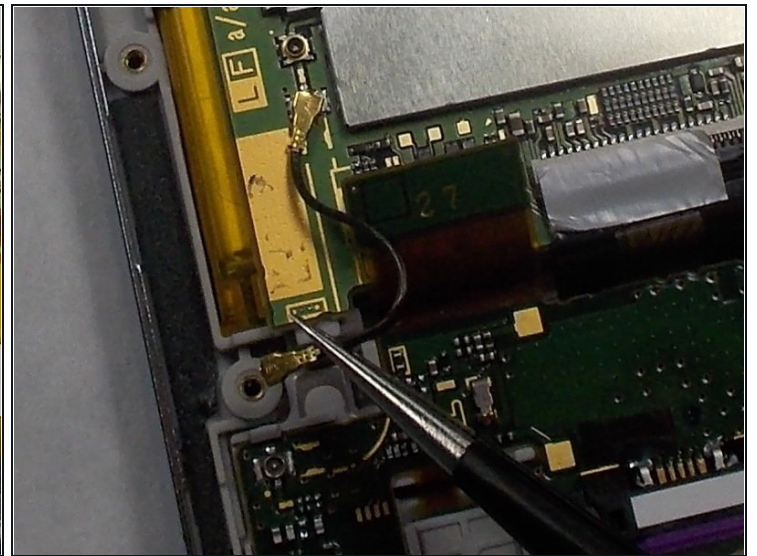
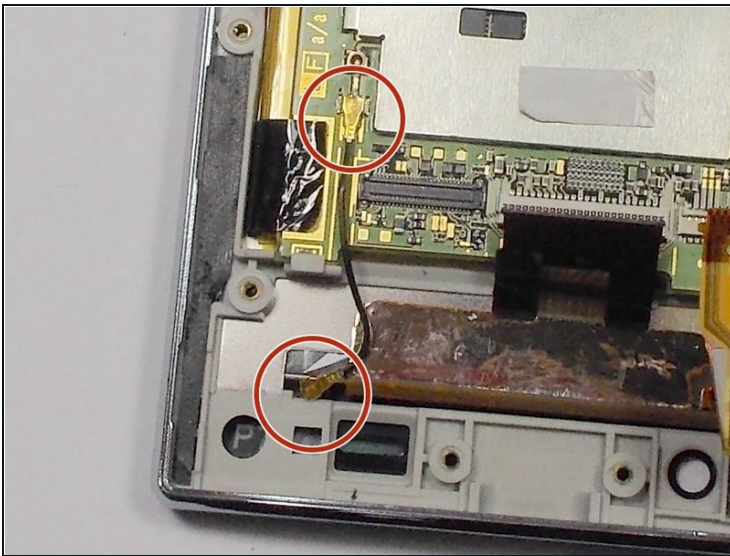
- Peel off the black pieces of tape.

Step 8



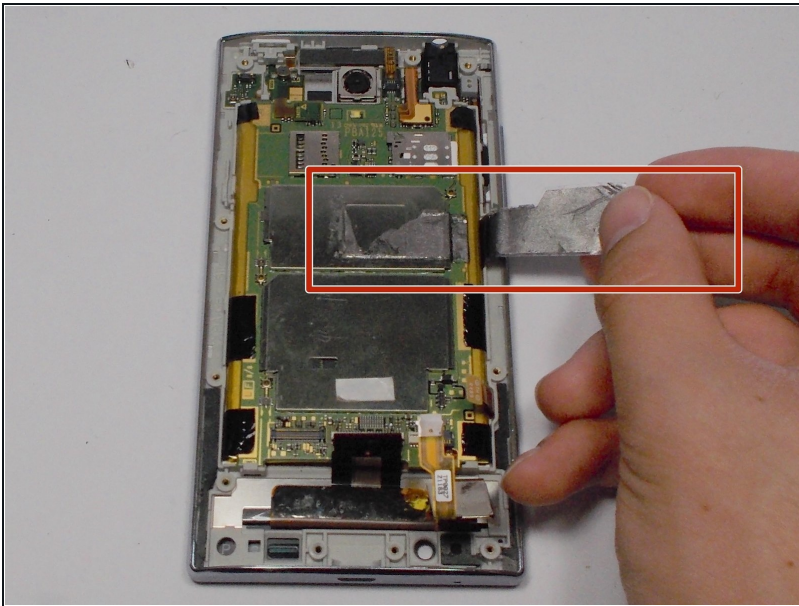
- Use the tip of a spudger or your fingernail to flip up the small retaining flap. Then pull the cable out using [tweezers](#).

Step 9



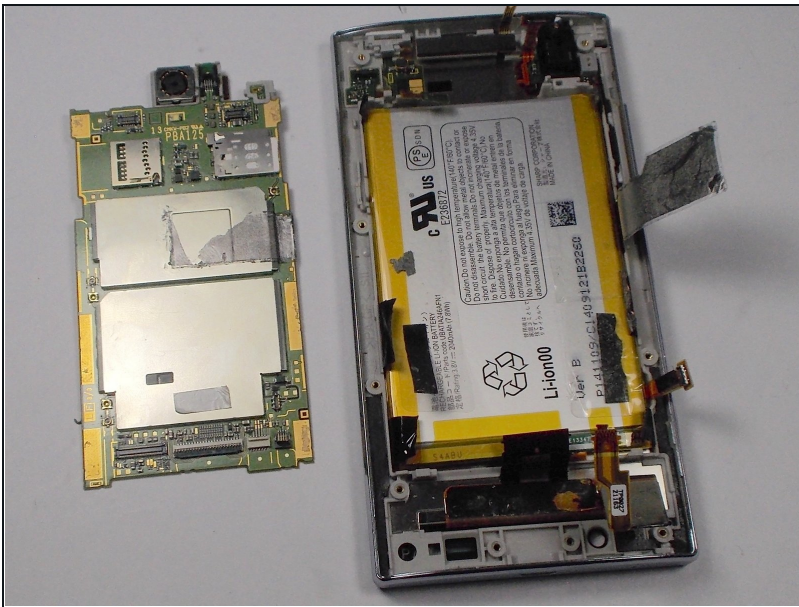
- Remove the wire from the two marked connections using tweezers to pull the wire apart from the device.

Step 10



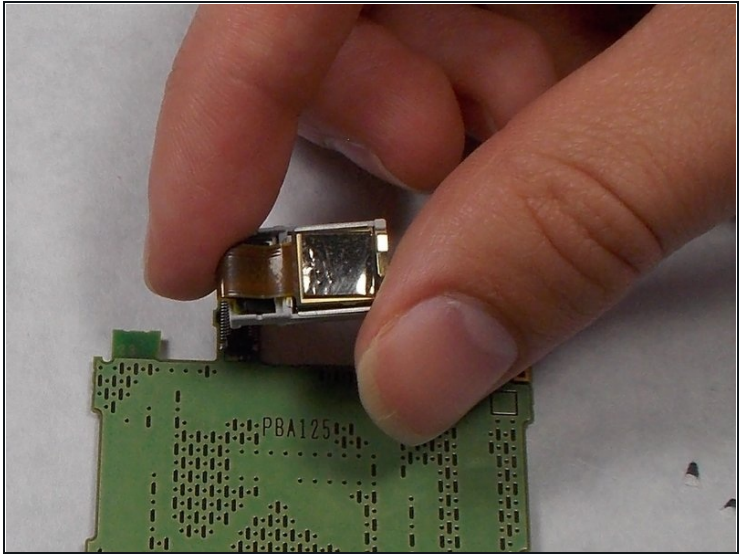
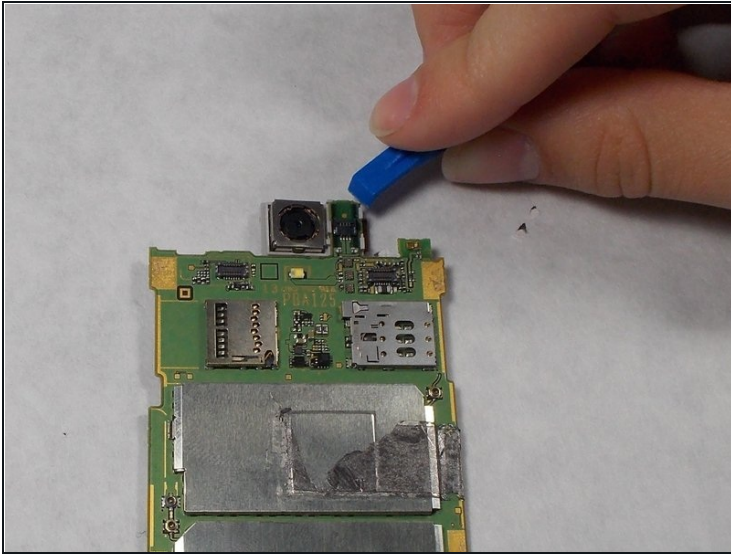
- Peel the tape off with your hands.

Step 11



- Lift the motherboard out with your hands.

Step 12 — Rear Camera



- Disconnect the camera from the board using a plastic opening tool.
- ① Remove the camera from the back of the circuit board.

To reassemble your device, follow these instructions in reverse order.