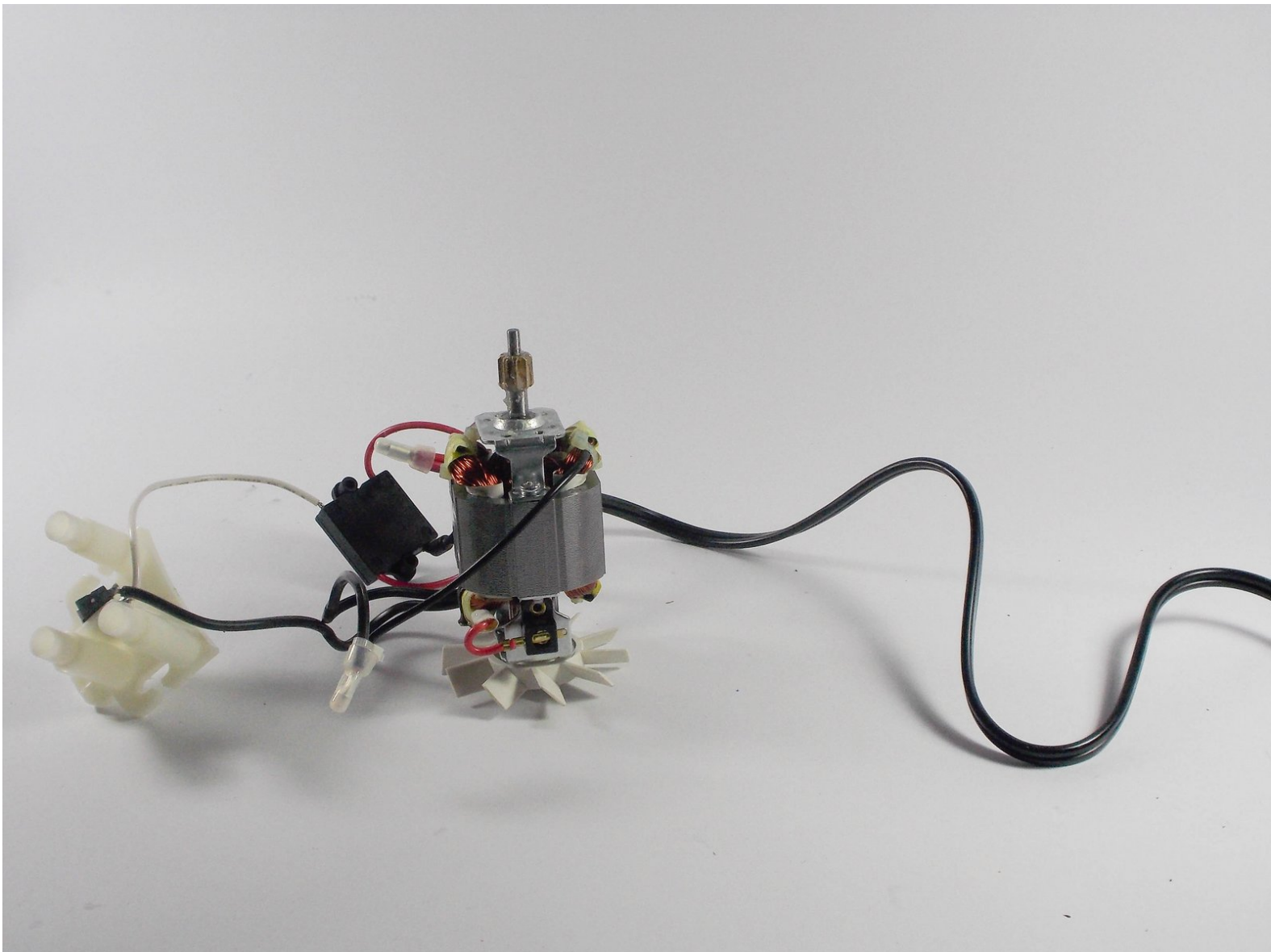




Hamilton Beach 70730 Motor Replacement

This is a guide to replace the motor of your Hamilton Beach product.

Written By: Mack Bernard



INTRODUCTION

The Hamilton Beach 10-Cup Food Processor & Vegetable Chopper with Bowl Scraper (Model 70730) is a versatile machine that provides the functions of a food processor, food chopper, and vegetable chopper. The device has two speeds plus pulse and 450 watts of power.

This guide outlines the steps to replace the motor connecting the drive shaft to the chopping blade.

Warnings:

- Be sure device is unplugged before beginning replacement.
- Be aware of lubricant along the bottom of the drive shaft.



TOOLS:

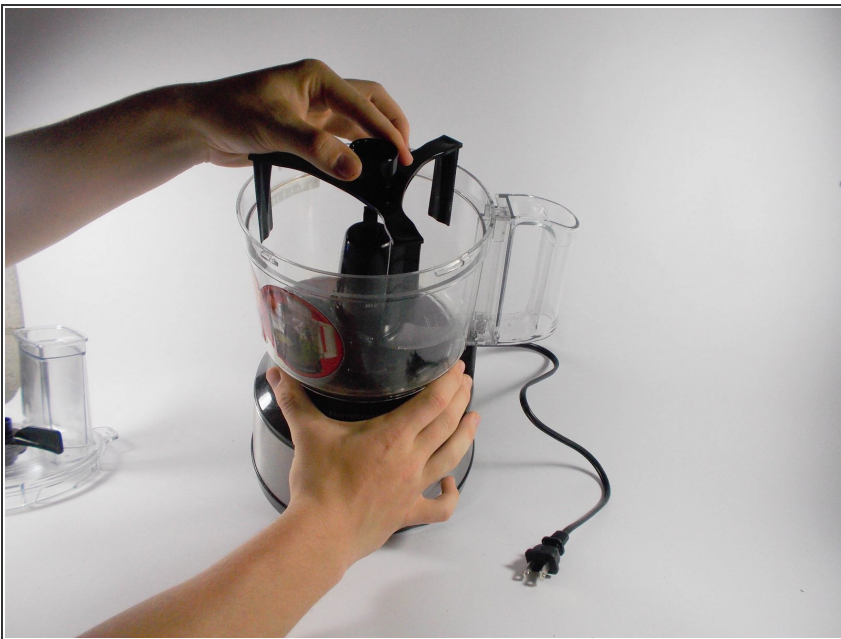
- [64 Bit Driver Kit](#) (1)
 - [Metal Spudger](#) (1)
-

Step 1 — Bowl



- Unscrew the cover by turning it counterclockwise.

Step 2



- Grab the scraper by the midsection to remove.

Step 3



- Carefully remove the blades by lifting them off of the blade shaft.

Step 4



- Rotate the bowl counterclockwise to release it from the base.

Step 5



- ① Make sure there is no food or grime along the outside of the bowl or the base.

Step 6 — Switch



- Using a metal spudger, pry the switch from the front of the device.

Step 7 — Drive Shaft



- Using the metal spudger, remove the four adhesive plastic covers that hide the screws.

ⓘ These covers are adhered to the screws.

Step 8



- Remove any excess glue that is adhered to the screws with the precision tweezers.

Step 9



- Using a JIS #1 driver, remove the four 10 mm screws.

Step 10



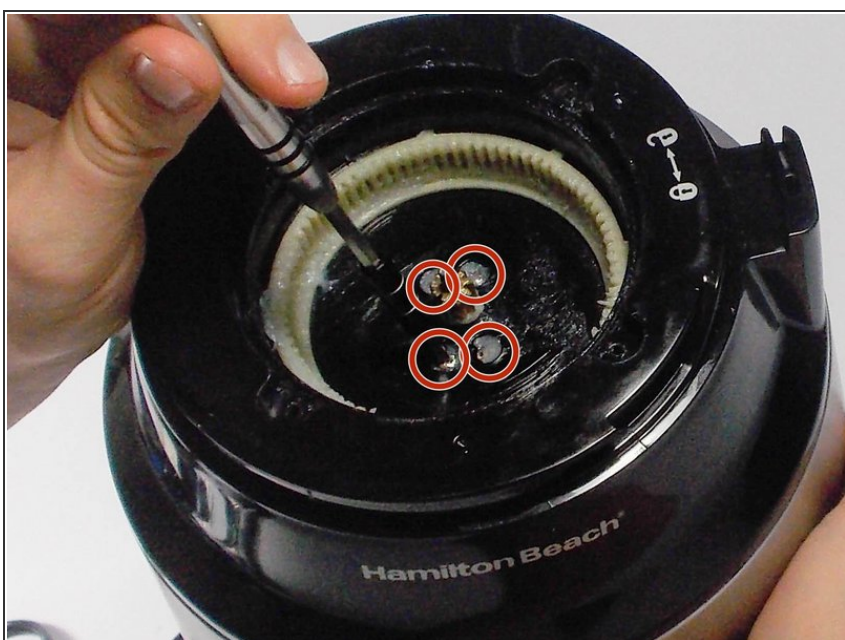
- Lift the driveshaft off of the base.

Step 11 — Motor



- Reach in and remove the set of 3 gears.

Step 12



- Remove the four 8 mm JIS #1 screws that were revealed after removing the set of gears.

⚠ There will be lubricant on the screws.

Step 13



- Flip the device over so the bottom is visible.

Step 14



- Using a JIS #1 screwdriver, remove each of the four suction cups that are attached to the bottom of the food processor.

Step 15



- Using a JIS #1 screwdriver, remove the four 12 mm screws on the bottom.
- ⓘ The screws are recessed about 3 mm inside of the device and may not be easily visible.

Step 16



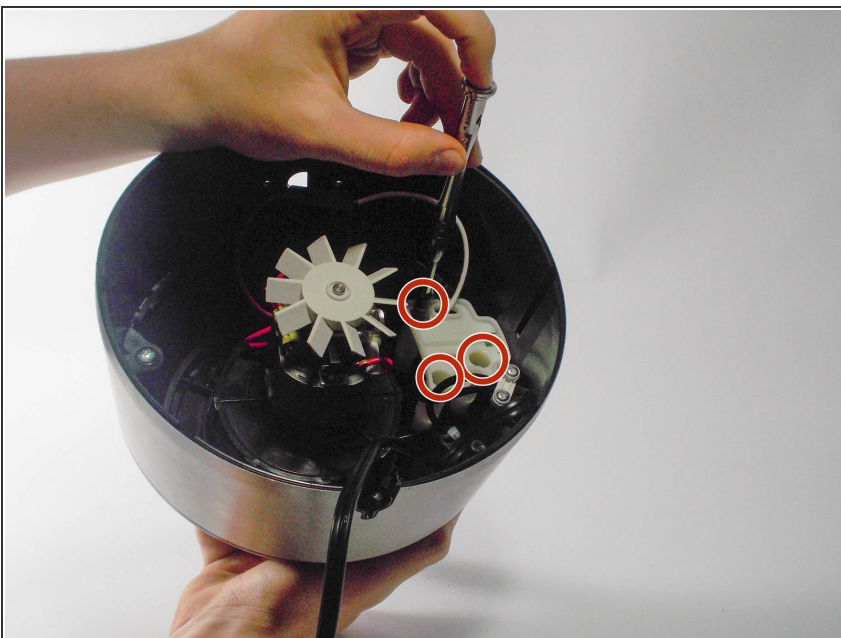
- Remove the two 4 mm screws underneath the on/off switch with a JIS #1 screwdriver.

Step 17



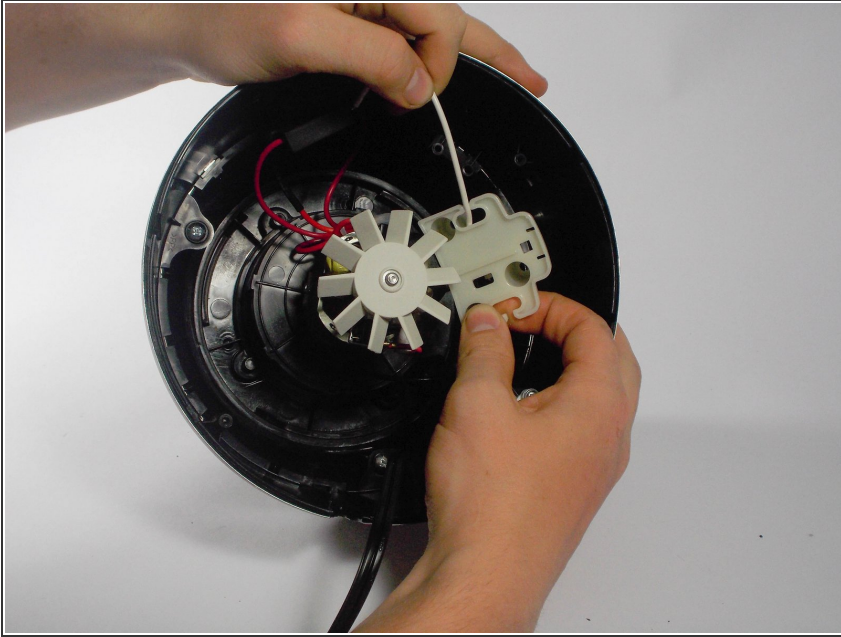
- Pull the bottom plate away from the base.

Step 18




- Using a JIS # 1 screwdriver, remove the three screws on the white bracket.

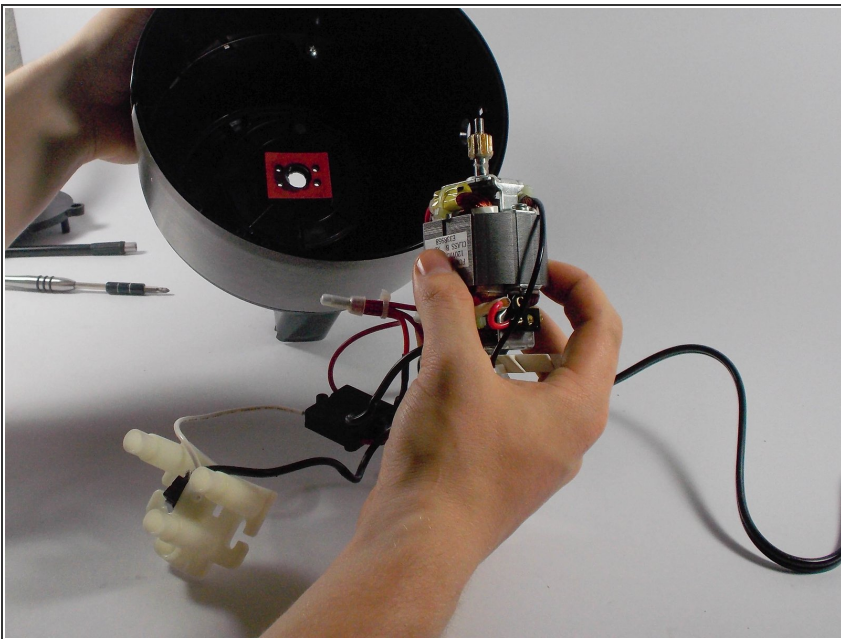
Step 19



- Remove the white bracket and guide the wires away from their holders. Be careful not to dislodge the spring held inside the base.

 Be careful not to dislodge the spring on the cylindrical white piece next to it.

Step 20



- The motor can now be removed from the inside of the food processor.

To reassemble your device, follow these instructions in reverse order.