



Toshiba Mini NB505 WiFi Card Replacement

The WiFi card is an essential component for allowing your computer to access the internet. If your laptop can no longer connect to the WiFi, it may be time to replace the card.

Written By: Owen Velho



INTRODUCTION

This guide will showcase how to easily replace the WiFi Card.

TOOLS:

- [Phillips #000 Screwdriver](#) (1)
-

Step 1 — Bottom Plate



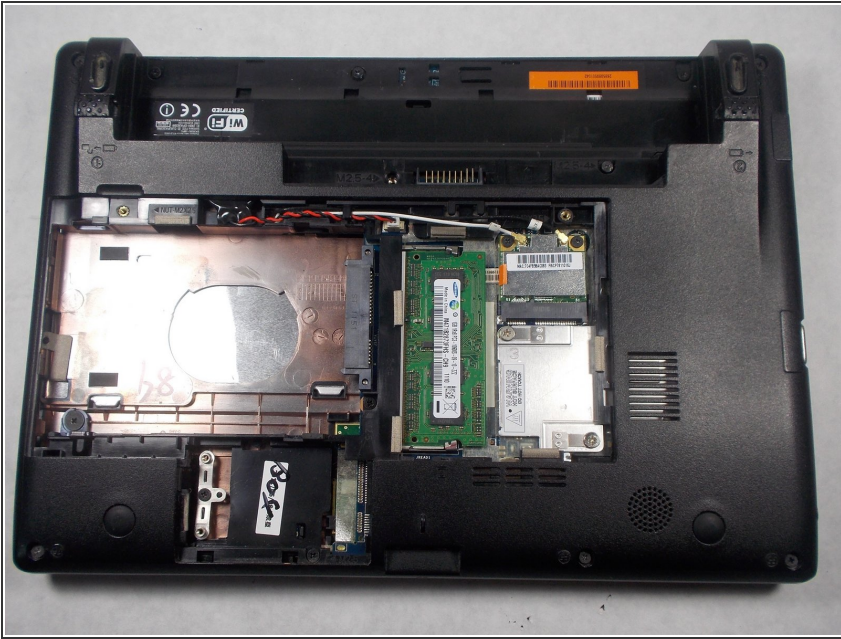
- Locate the two 1.2mm philips #000 screws holding the bottom plate onto the laptop.

Step 2



- Using a Philips head #000 screwdriver, carefully remove the two 1.2mm screws.

Step 3



- The plate can now be easily removed.

Step 4 — WiFi Card



- Locate the WiFi card by following the black and white wiring inside of the laptop.

Step 5



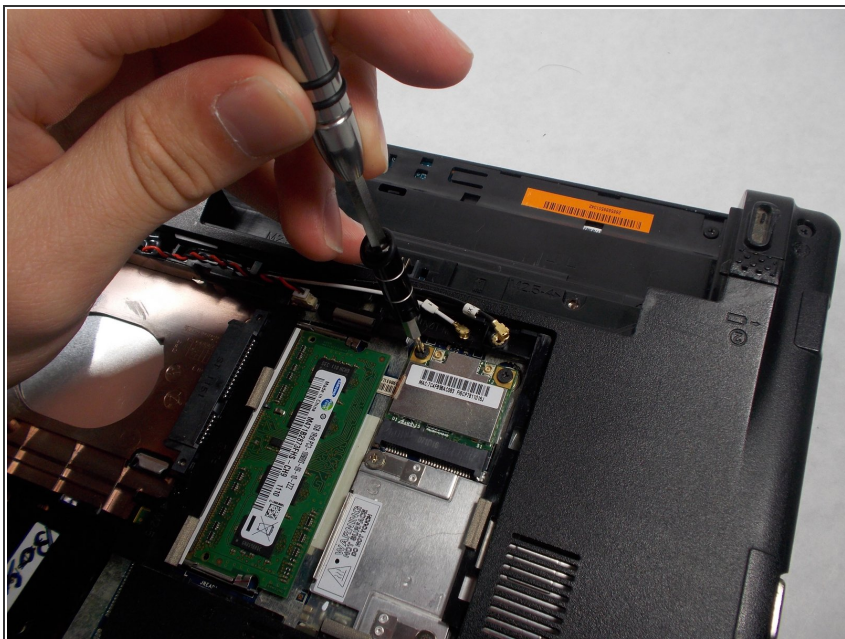
- Locate and gently pull up on the black and white wires connecting to the card.

Step 6



- Locate the two 1.2 mm phillips #000 screws holding the WiFi card.

Step 7



- Use a Phillips head #000 screwdriver to remove the two 1.2mm screws holding the card into the laptop.

Step 8



- Once the card pops up, gently remove it.

To reassemble your device, follow these instructions in reverse order.