



# Toshiba Mini NB505 Bottom Plate Replacement

The bottom plate is held on by two small screws. You will need to remove this plate in order to access the internal component of your laptop.

Written By: Owen Velho



---

## INTRODUCTION

This guide will show you how to easily remove the bottom plate from your laptop.



### TOOLS:

- [Phillips #000 Screwdriver](#) (1)
-

## Step 1 — Bottom Plate



- Locate the two 1.2mm philips #000 screws holding the bottom plate onto the laptop.

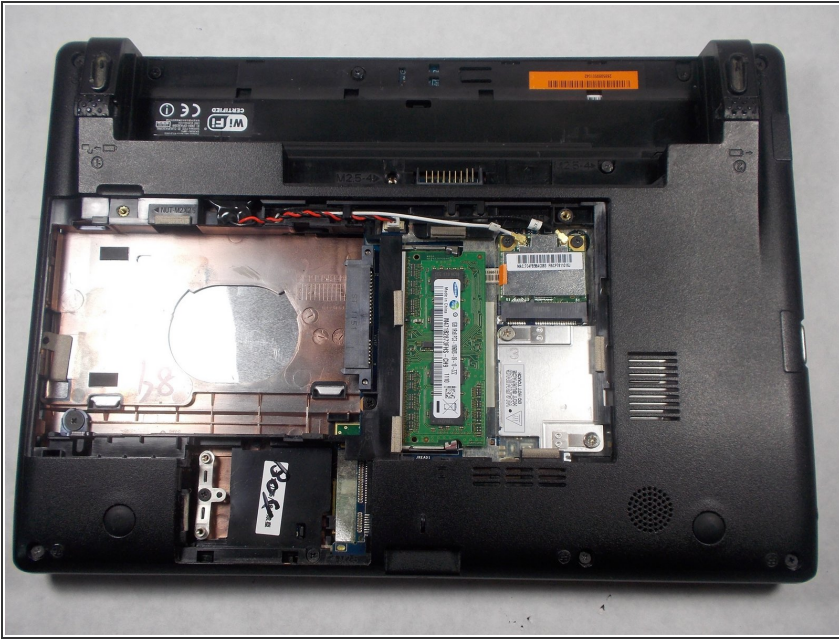
## Step 2



- Using a Philips head #000 screwdriver, carefully remove the two 1.2mm screws.



## Step 3



- The plate can now be easily removed.

To reassemble your device, follow these instructions in reverse order.